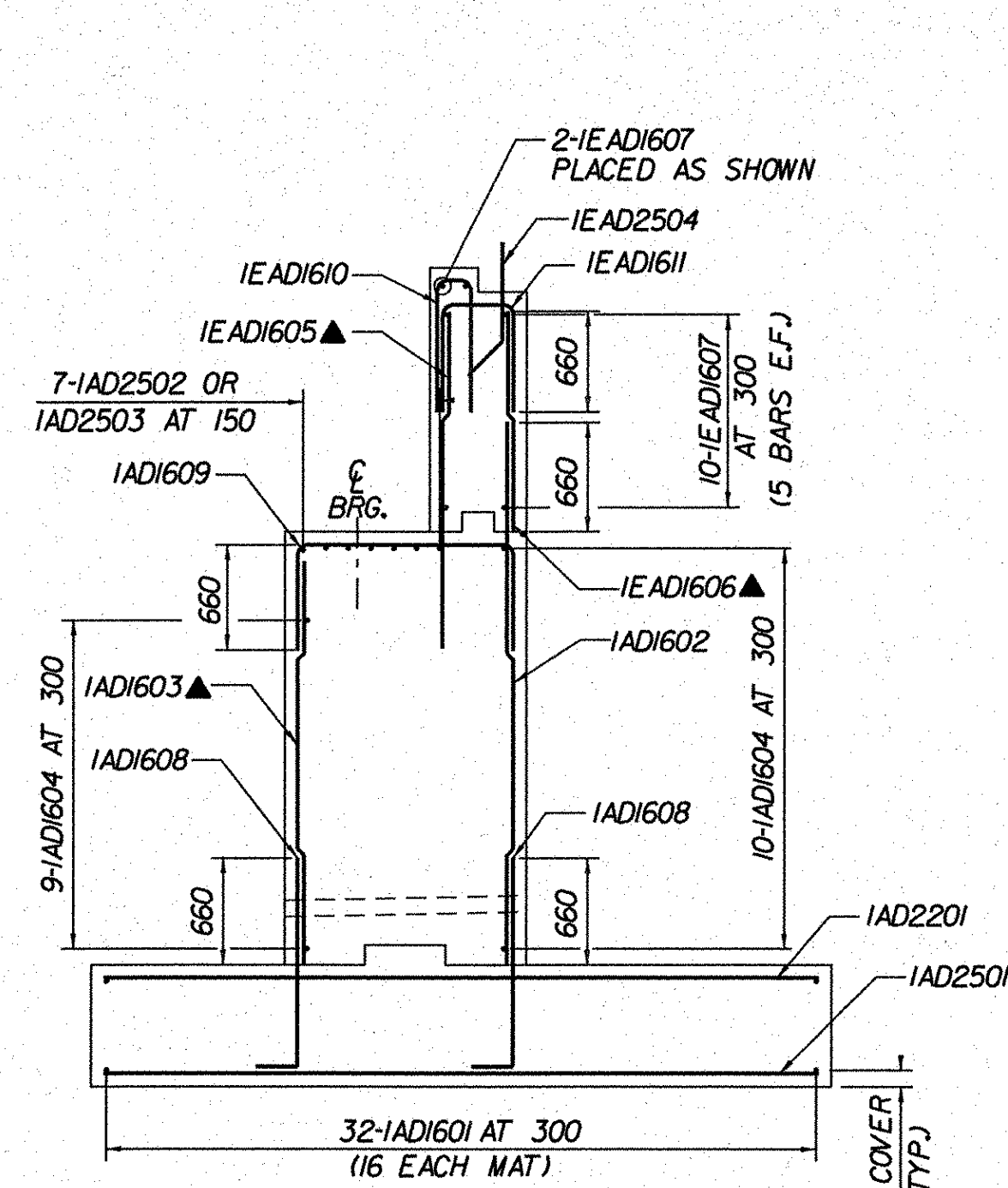
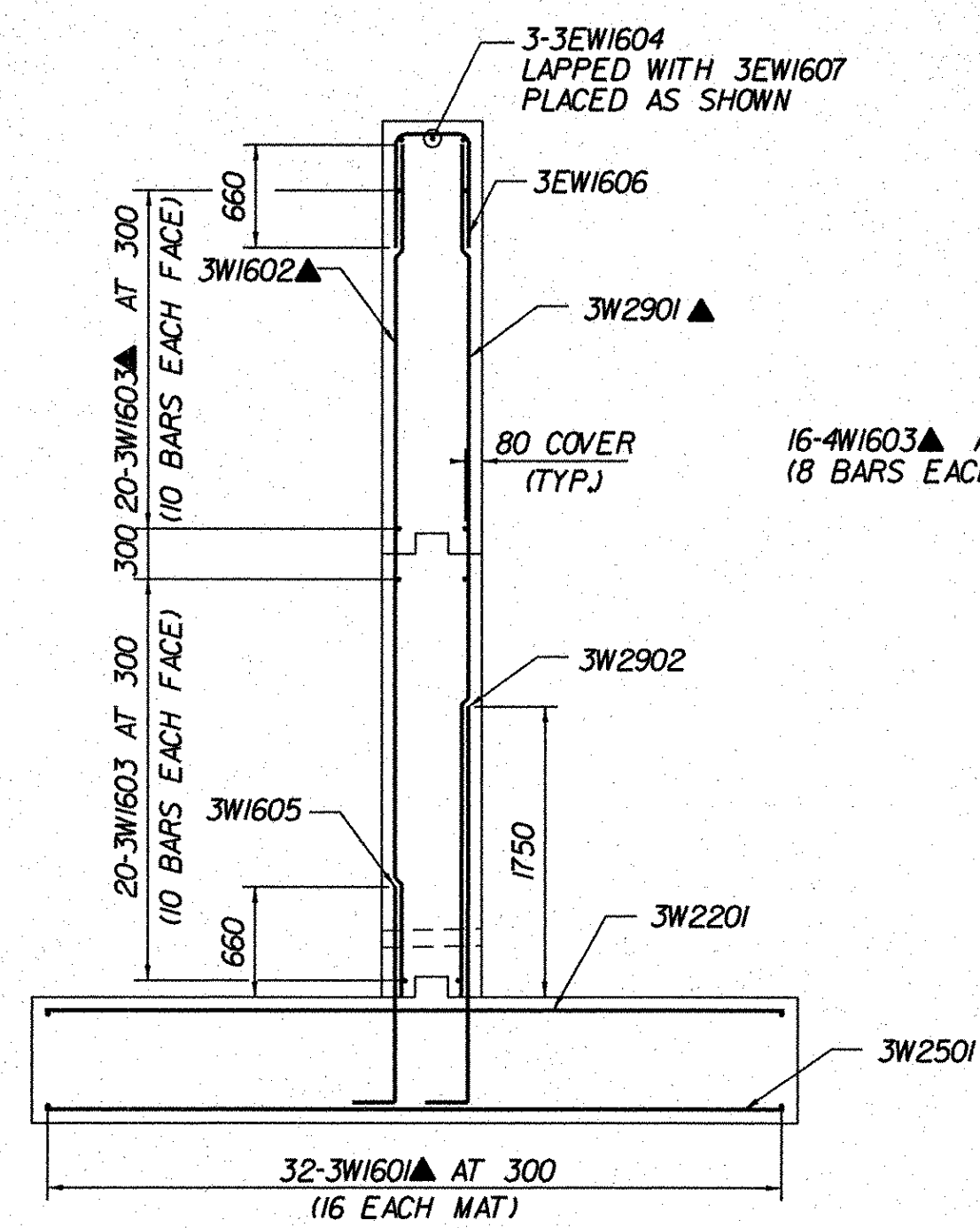


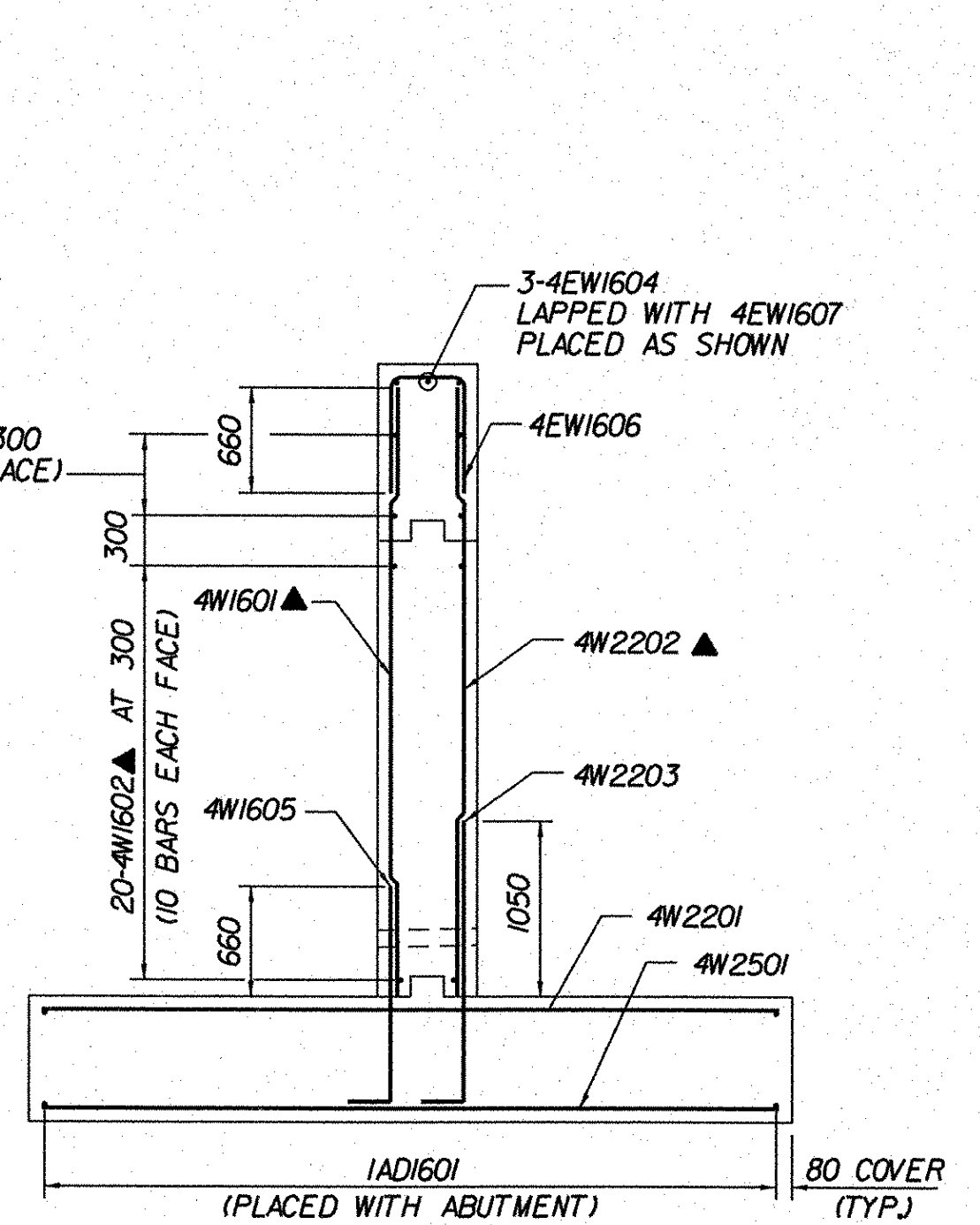
ELEVATION
(ABUTMENT 1 - RAMP D, WINGWALL NO. 3 AND WINGWALL NO. 4 ELEVATION)
 SCALE 1:50



SECTION A-A
(ABUTMENT 1 - RAMP D)
 (SEE BRIDGE SHEET BR290 FOR SECTION LOCATION)
 SCALE 1:40

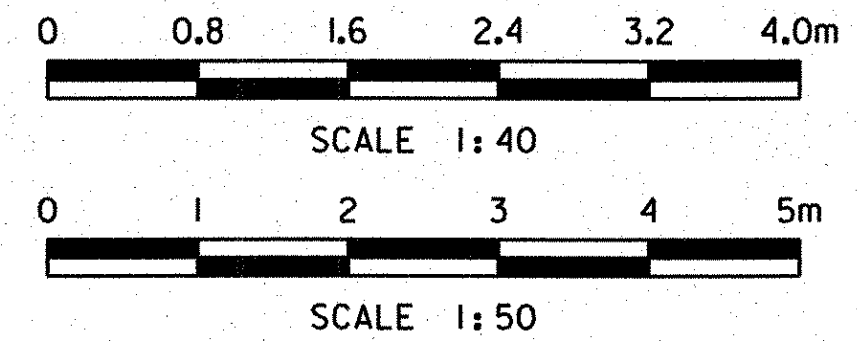


SECTION B-B
(WINGWALL NO. 3)
 (SEE BRIDGE SHEET BR290 FOR SECTION LOCATION)
 SCALE 1:40



SECTION C-C
(WINGWALL NO. 4)
 (SEE BRIDGE SHEET BR290 FOR SECTION LOCATION)
 SCALE 1:40

LEGEND:
 F.F. - FRONT FACE
 B.F. - BACK FACE
 E.F. - EACH FACE
 C.B. - CORNER BAR
 C.J. - CONSTRUCTION JOINT
 ▲ - CUT TO FIT IN FIELD



STATE OF VERMONT	
AGENCY OF TRANSPORTATION	
Town Of BENNINGTON	Bridge No. B15N
Highway No. VT RTE 279	Log Sta. Surv. Sta.
VT ROUTE 279 & RAMPS OVER ROARING BRANCH OF WALLOOSAC RIVER	
ABUTMENT 1 REINFORCEMENT DETAILS (RAMP D)	
Designed By B.J. CARLSON	Drawn By R.G. COCOL
Checked By K.M. WOJTKOWSKI	Date 06/08
Bridge Design Supervisor K.M. WOJTKOWSKI	Date 06/08
PROJECT BENNINGTON	PROJECT NO. AC NH 019-1(51)
TVGA CAD Drawing No. RmpDA1RebDet.dgn	Date 02/02/2009
Bridge Sheet No. BR291	Sheet 278 of 367

