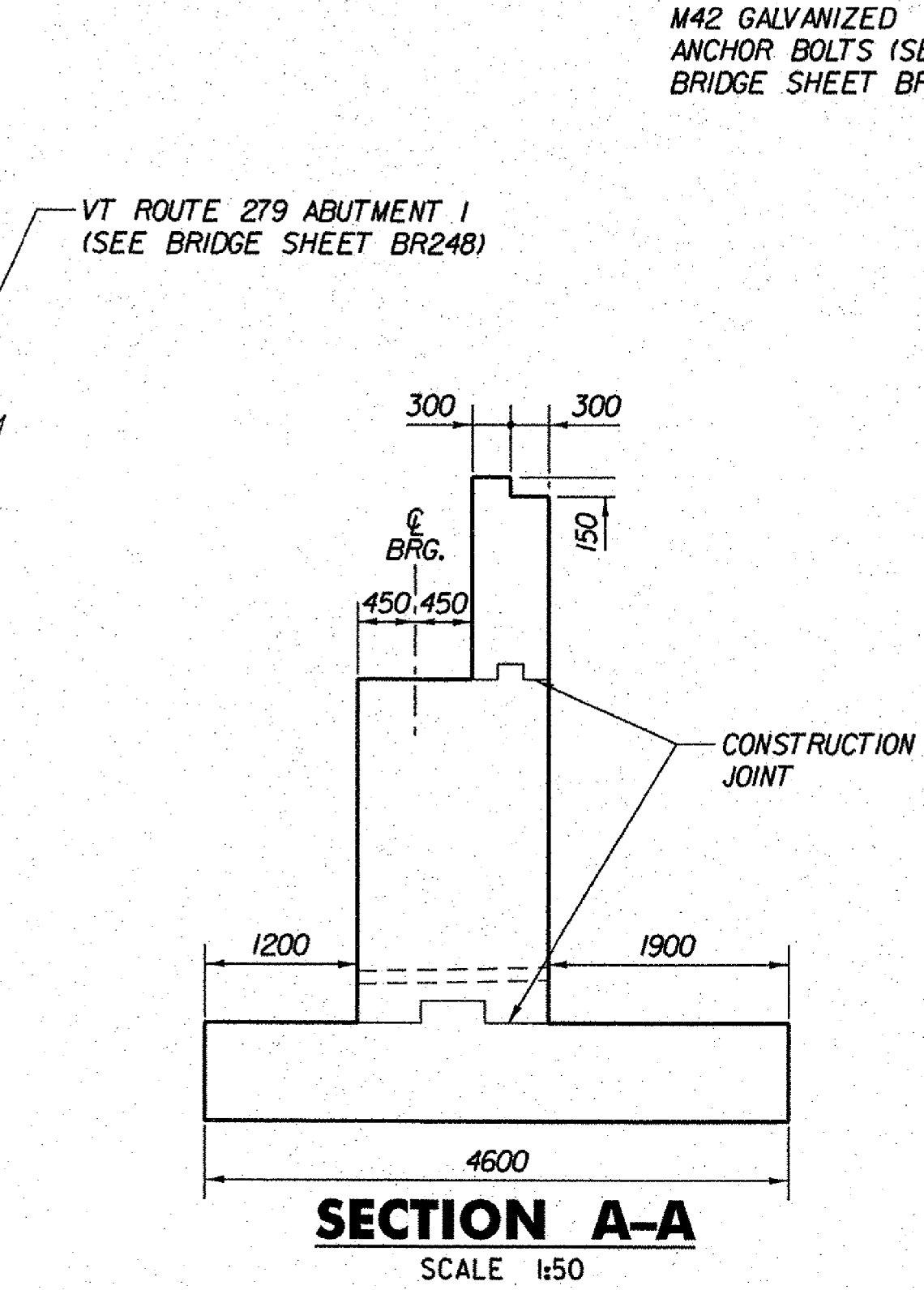
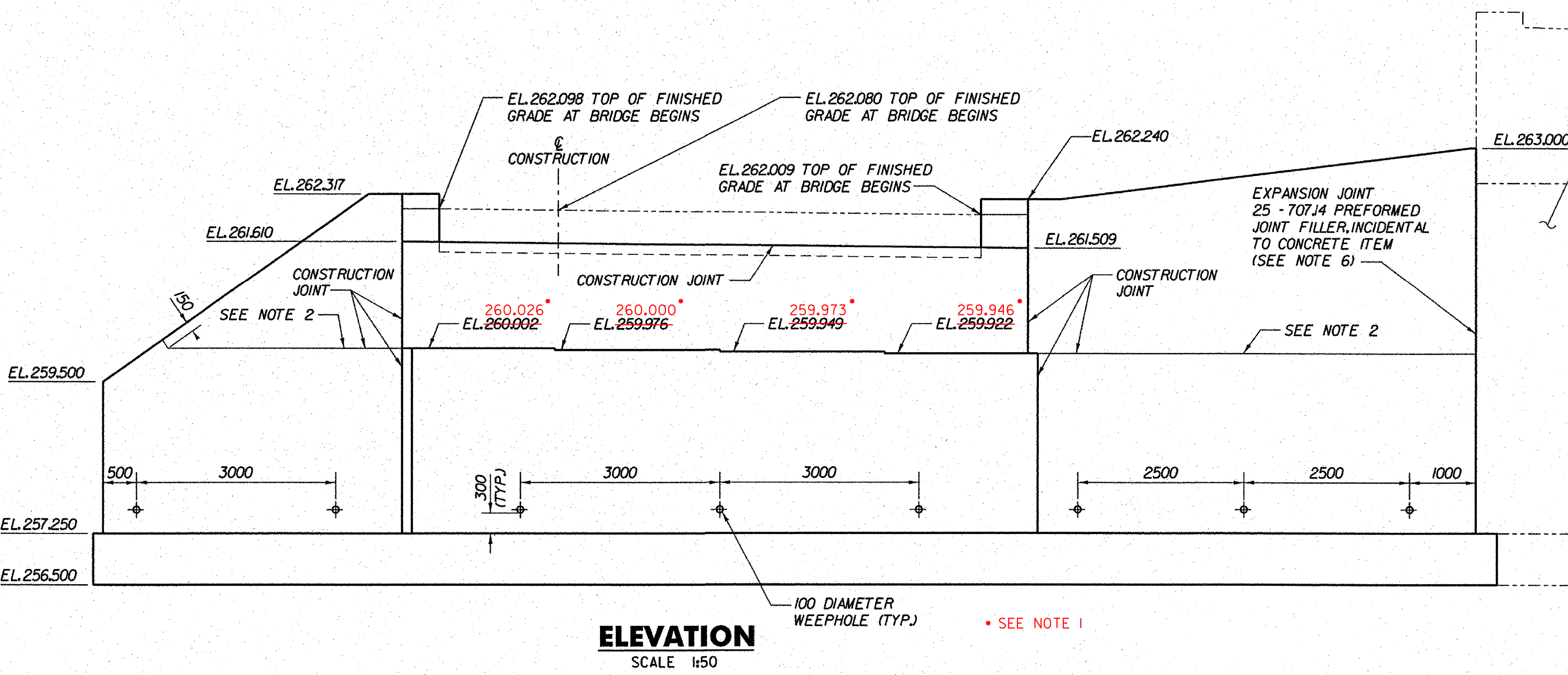
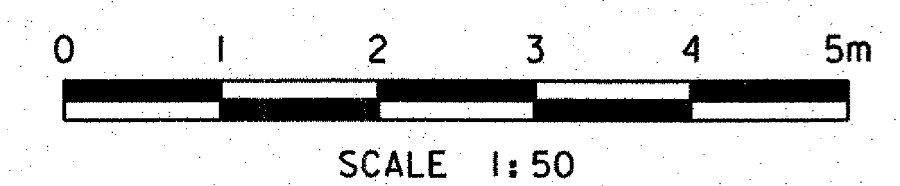


- NOTES:**
1. ABUTMENT SEAT ELEVATIONS MAY HAVE TO BE ADJUSTED TO ACCOMMODATE THE ACTUAL BEARINGS FURNISHED. IT IS THE RESPONSIBILITY OF THE CONTRACTOR TO COORDINATE ANY CHANGES IN THE BEARINGS WHICH MAY AFFECT THE ABUTMENT SEAT ELEVATIONS OR DIMENSIONS.
  2. NO CONCRETE SHALL BE PLACED ABOVE THE WINGWALL HORIZONTAL CONSTRUCTION JOINT UNTIL THE BEAM PROFILES HAVE BEEN TAKEN AND FINAL FINISHED GRADE OF THE DECK IS APPROVED BY THE ENGINEER.
  3. LONGITUDINAL AND TRANSVERSE BRIDGE SEAT REINFORCING SPACING SHALL BE MODIFIED AS NECESSARY TO ASSURE THAT THERE WILL BE NO CONFLICT WITH THE BEARING DEVICE ANCHOR BOLTS.
  4. FOR DIMENSIONS USED IN DETERMINING THE THEORETICAL BRIDGE SEAT ELEVATIONS, SEE ABUTMENT 1 FIXED BEARING DETAILS, BRIDGE SHEET BR301.
  5. FOR ADDITIONAL LAYOUT INFORMATION, SEE FRAMING PLAN (SHEET 2 OF 2), (RAMP D), BRIDGE SHEET BR286.
  6. FOR THE TYPICAL CONCRETE CONSTRUCTION JOINT AND EXPANSION JOINT DETAILS, SEE TYPICAL BRIDGE DETAILS, BRIDGE SHEET BR305.



GIRDER CHORD ANGLE	
LOCATION	"A"
G1	9° 19' 11"
G2	9° 18' 10"
G3	9° 17' 10"
G4	9° 16' 10"



**STATE OF VERMONT**  
**AGENCY OF TRANSPORTATION**

Town Of	BENNINGTON	Bridge No.	BI5N
Highway No.	VT RTE 279	Log Sta.	
		Surv. Sta.	
VT ROUTE 279 & RAMPS OVER ROARING BRANCH OF WALLOOMSAC RIVER			
<b>ABUTMENT 1 MASONRY (RAMP D)</b>			
Designed By	B.J. CARLSON	Drawn By	D.W. SHAFFER
Checked By	K.M. WOJTKOWSKI	Date	06/08
		Bridge Design Supervisor	K.M. WOJTKOWSKI Date 06/08
PROJECT	BENNINGTON	PROJECT NO.	AC NH 019-(5)
TVGA CAD Drawing No.	RmpDA1Conc.dgn	Date	02/02/2009
Bridge Sheet No.	BR289	Sheet	276 of 367

