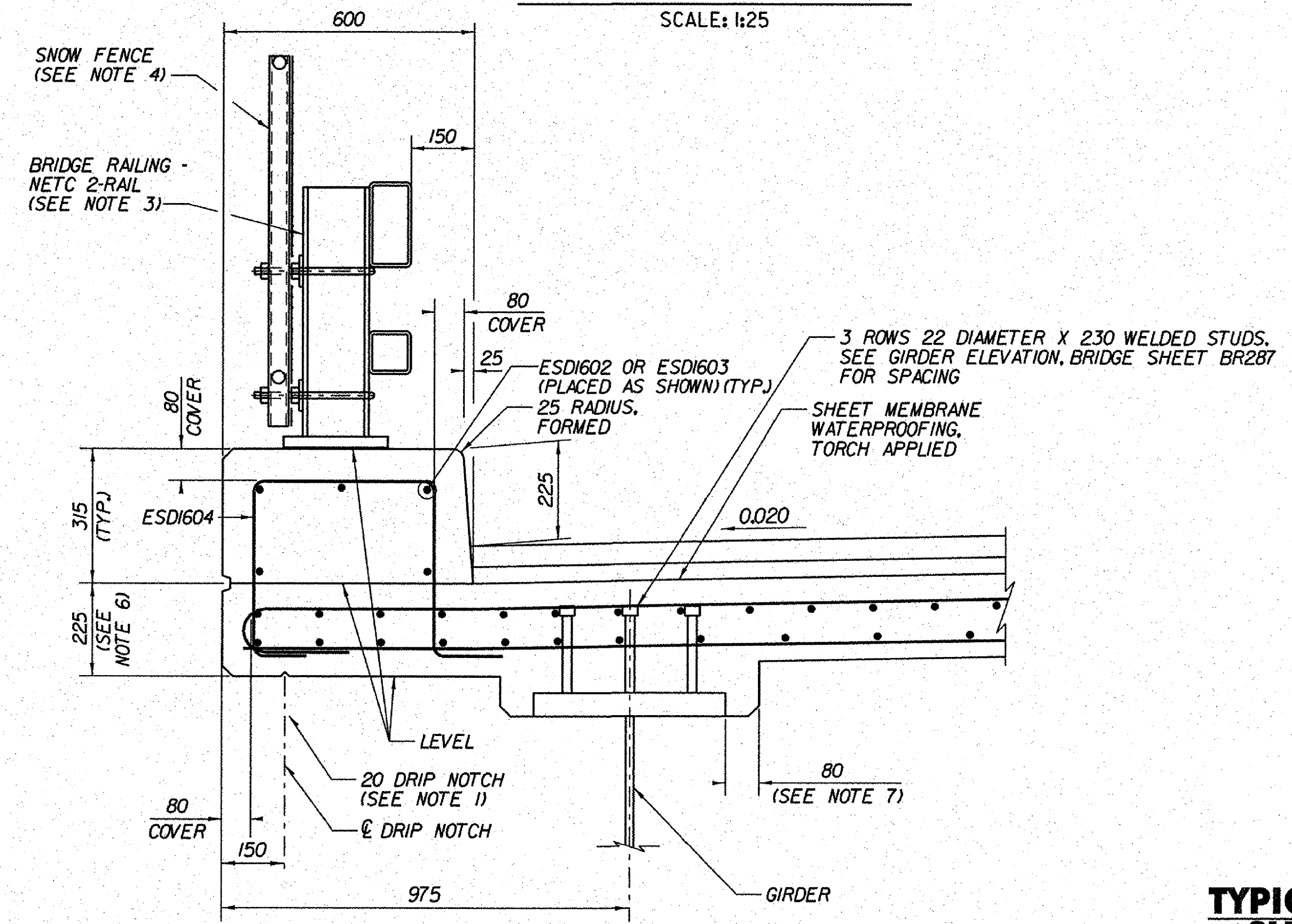
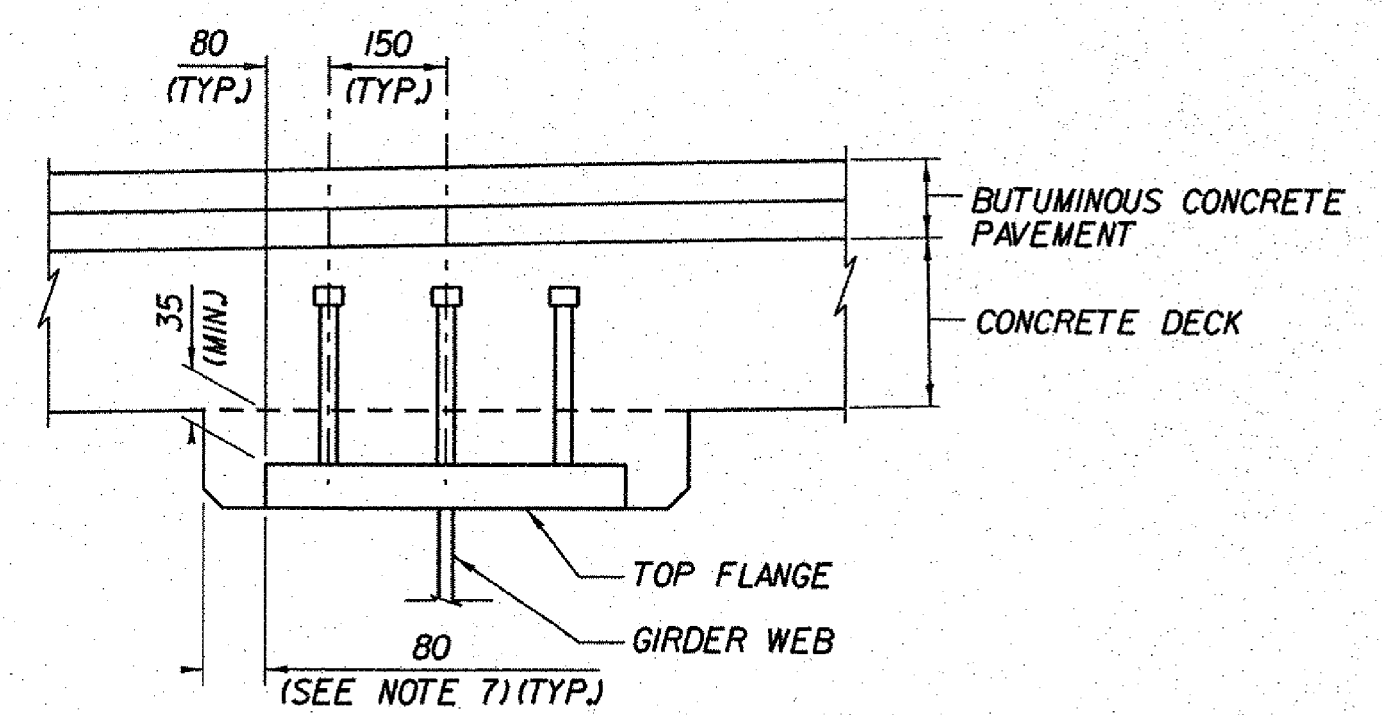


TRANSVERSE SECTION
SCALE: 1:25



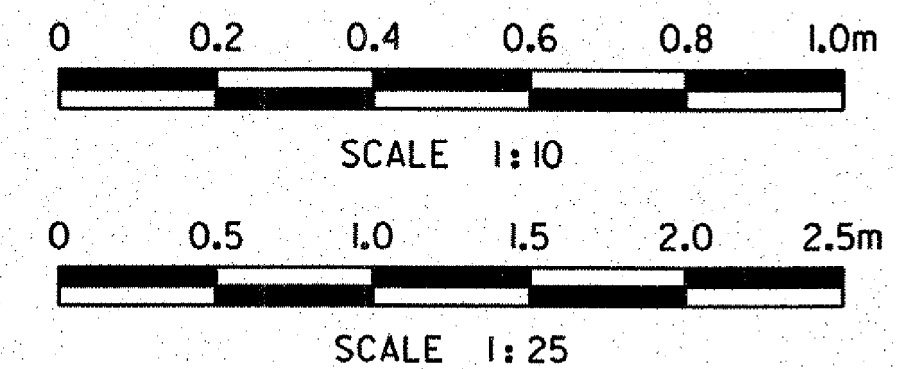
FASCIA DETAIL
SCALE: 1:10



TYPICAL GIRDER HAUNCH AND SHEAR CONNECTOR DETAIL
NOT TO SCALE

NOTES:

1. DRIP NOTCH TO BE TERMINATED AT THE ABUTMENT 1.5 m FROM THE END OF SLAB AT 45° TO THE FASCIA.
2. FOR DETAILS OF TRANSVERSE REINFORCEMENT SEE DECK REINFORCEMENT (RAMP D), BRIDGE SHEET BR283.
3. FOR DETAILS OF NETC BRIDGE RAIL AND APPROACH SECTION, SEE BRIDGE SHEET BR310 THROUGH BR312.
4. FOR SNOW FENCE LOCATIONS AND DETAILS, SEE BRIDGE SHEETS BR284, AND BR313.
5. FOR DETAILS OF PERMANENT CORRUGATED METAL FORMS AND REINFORCED GIRDER HAUNCH SEE TYPICAL BRIDGE DETAILS, BRIDGE SHEET BR305.
6. THE FINAL DEPTH OF THE FASCIA WILL BE DETERMINED BY THE FINAL TOP STEEL AND CONSTRUCTED GIRDER SEAT ELEVATIONS.
7. THE 80 HORIZONTAL SECTION MAY BE ELIMINATED FOR FORMING SYSTEMS DESIGNED FOR THE CONSTRUCTION OF VERTICAL HAUNCHES. SYSTEMS SHALL BE SUBMITTED FOR APPROVAL TO THE STRUCTURES ENGINEER. ALL VOIDS RESULTING FROM THIS FORMING SYSTEM SHALL BE FILLED IN ACCORDANCE WITH SUBSECTION 501.6(a) OF THE SPECIFICATIONS.



STATE OF VERMONT AGENCY OF TRANSPORTATION			
Town Of	BENNINGTON	Bridge No.	B15N
Highway No.	VT RTE 279	Log Sta.	
		Surv. Sta.	
VT ROUTE 279 & RAMPS OVER ROARING BRANCH OF WALLOOMSAC RIVER			
TRANSVERSE SECTION (RAMP D)			
Designed By	J.J. MANUSE	Drawn By	D.W. SHAFFER
Checked By	Date	Bridge Design Supervisor	
B.J. CARLSON	06/08	K.M. WOJTKOWSKI	Date 06/08
PROJECT	BENNINGTON	PROJECT NO.	AC NH 019-1(51)
TVGA CAD Drawing No.	RmpDTrans.dgn	Date	02/02/2009
Bridge Sheet No.	BR282	Sheet	269 of 367