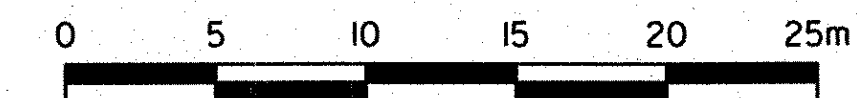
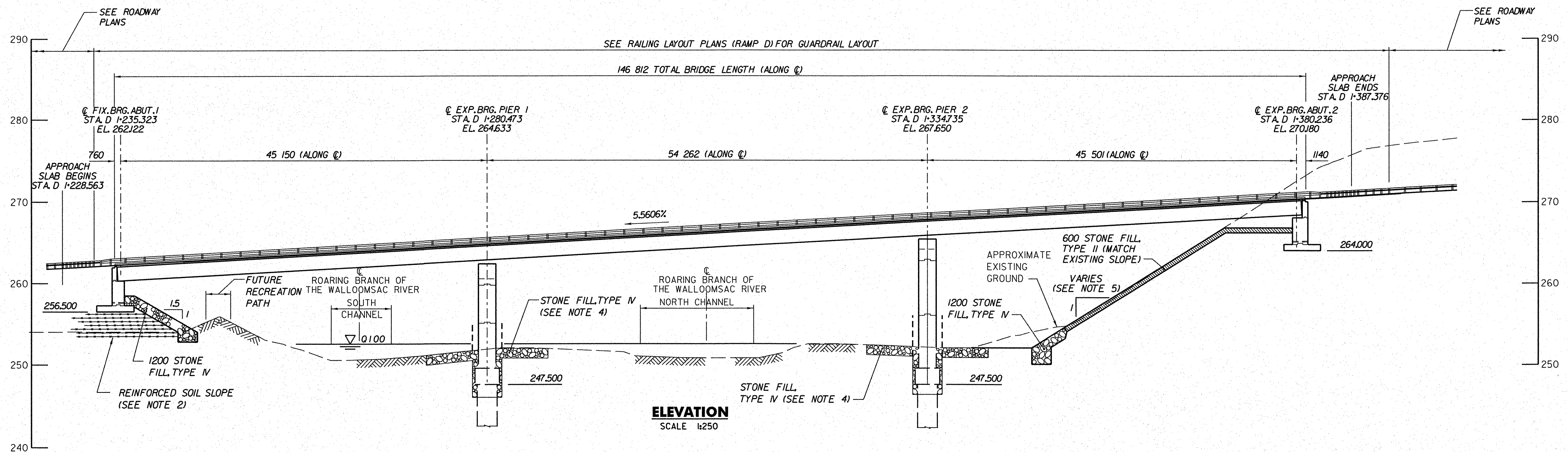


NOTES:

1. FOR HORIZONTAL AND VERTICAL CURVE DATA, SEE RAMP D ALIGNMENT PLAN A-01, AND RAMP D PROFILE PR-06, RESPECTIVELY.
2. FOR DETAILS OF THE REINFORCED SOIL SLOPE AT ABUTMENT #1, SEE SLOPE AND CHANNEL DETAILS, BRIDGE SHEET BR202.
3. FOR BRIDGE RAILING LAYOUT, SEE RAILING LAYOUT (RAMP D), BRIDGE SHEET BR284.
4. THE DEPTH OF TYPE IV STONE FILL SHALL BE 1200 OUTSIDE OF THE LIMITS OF PIER EXCAVATION AND BACKFILL.
5. THE SLOPE AT ABUTMENT 2 VARIES, SEE CHANNEL CROSS SECTIONS, BRIDGE SHEETS BR320 THROUGH BR331.



SCALE 1:250

**STATE OF VERMONT
AGENCY OF TRANSPORTATION**

Town Of	BENNINGTON	Bridge No.	B15N
Highway No.	VT RTE 279	Log Sta.	
		Surv. Sta.	

VT ROUTE 279 & RAMPS OVER ROARING BRANCH OF WALLOOMSAC RIVER

ELEVATION (RAMP D)

Designed By	J.J. MANUSE	Drawn By	D.S. URBINO
Checked By	Date	Bridge Design Supervisor	
B.J. CARLSON	06/08	K.M. WOJTKOWSKI	Date 06/08
PROJECT	BENNINGTON	PROJECT NO.	AC NH 019-1(51)
TVGA CAD Drawing No.	RampDElev.dgn	Date	02/02/2009
Bridge Sheet No.	BR281	Sheet	268 of 367