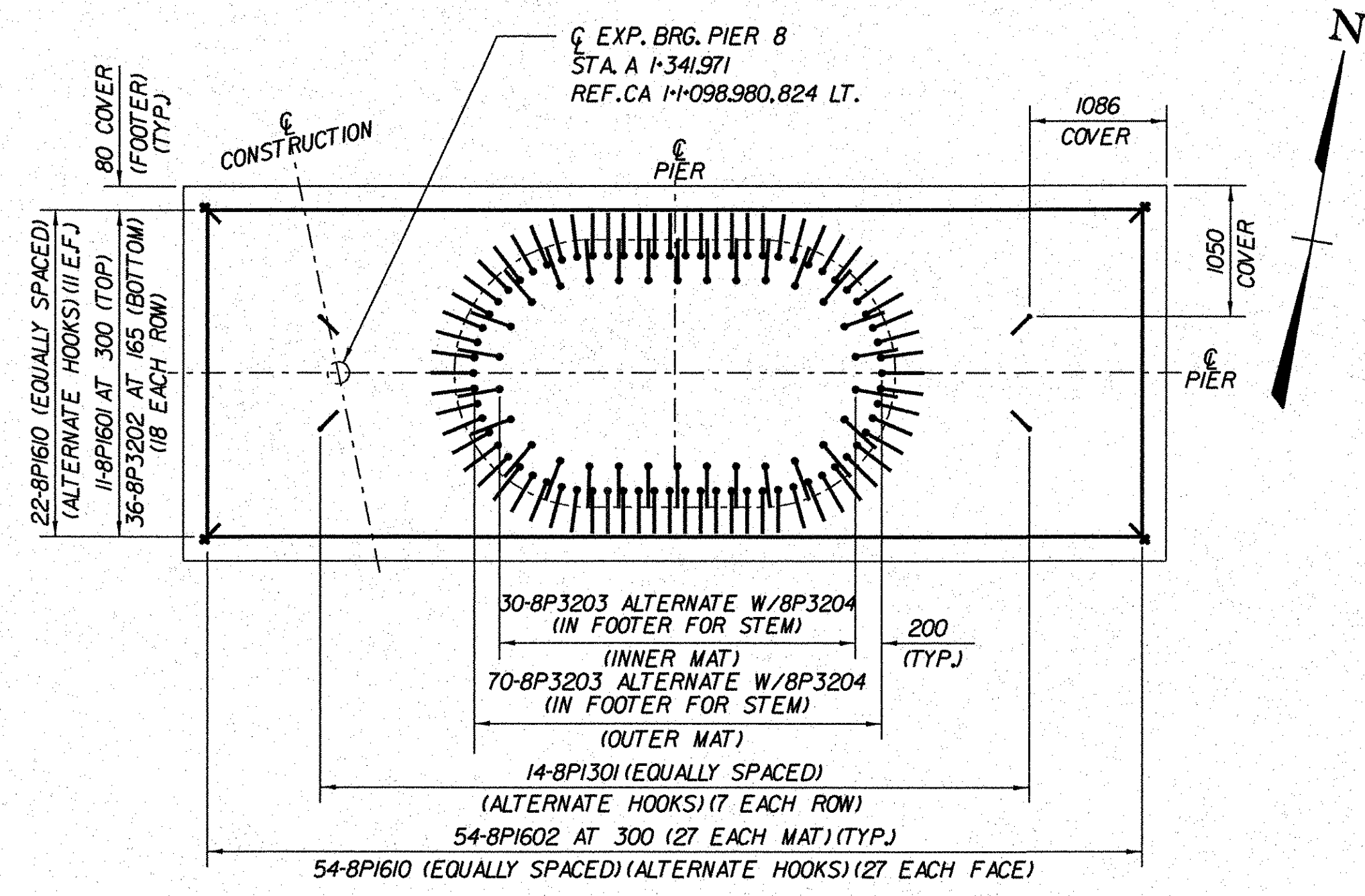
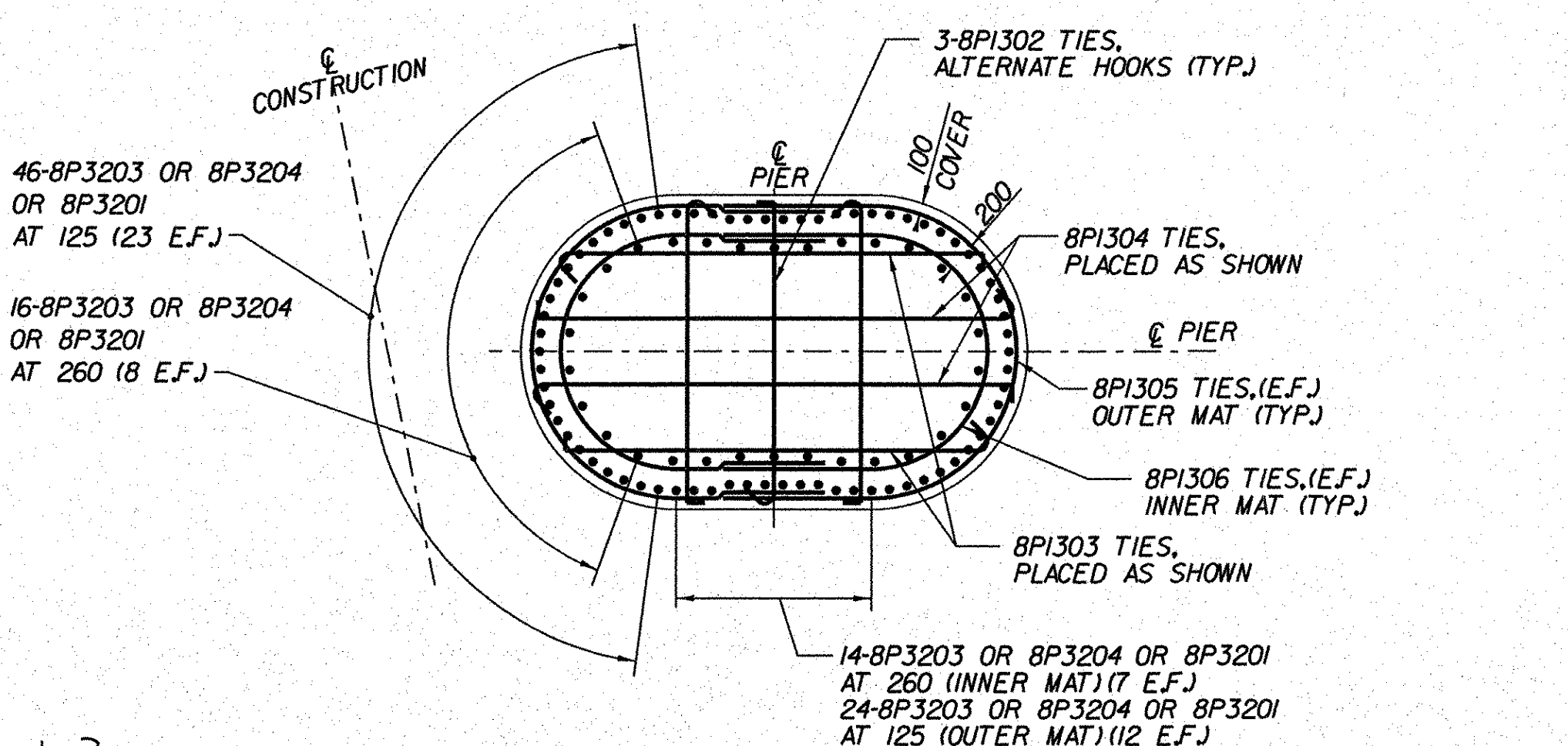


**NOTES:**

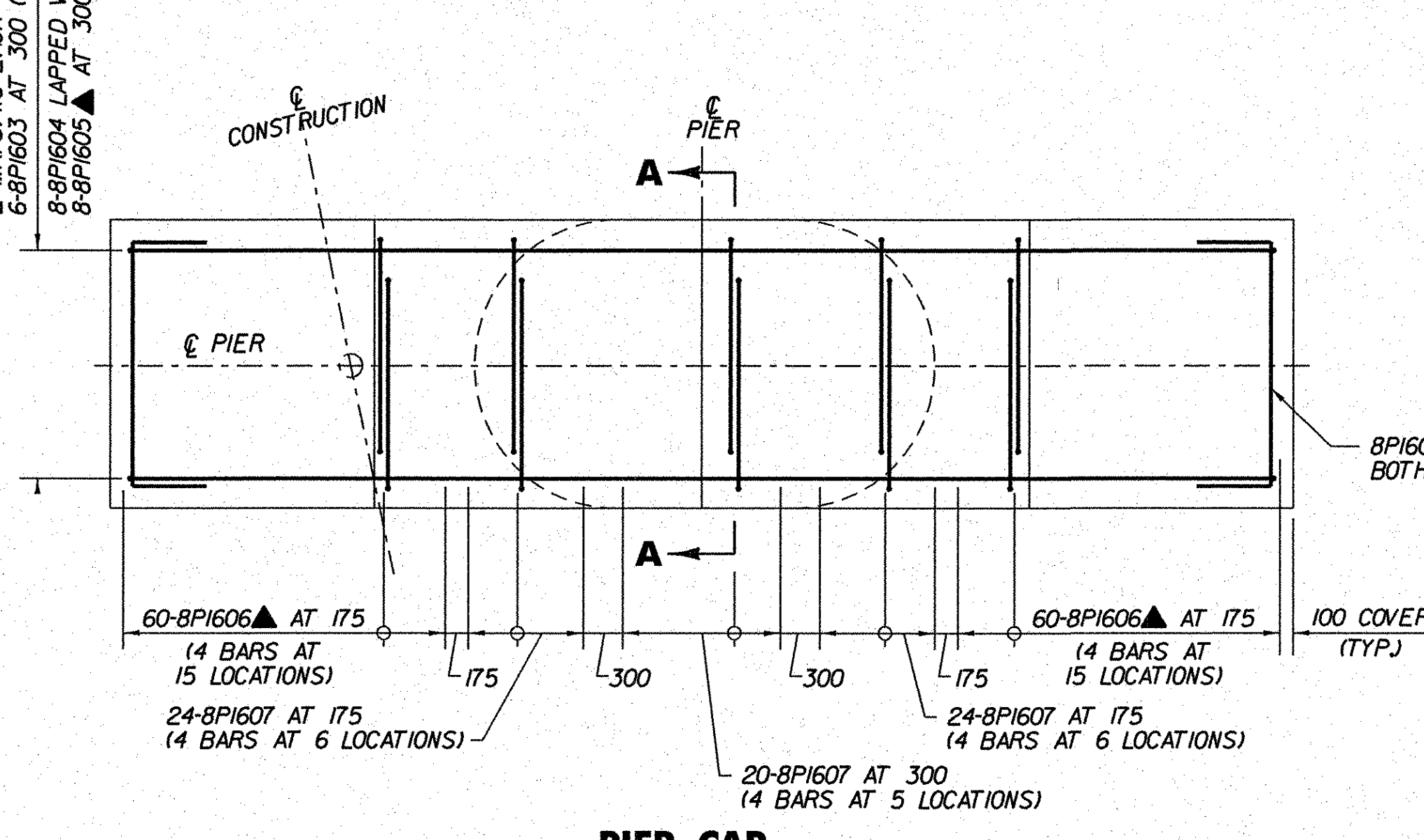
1. DRILLED SHAFT REINFORCEMENT NOT SHOWN FOR CLARITY. SEE BRIDGE SHEET BR300 FOR DETAILS.



**FOOTING**

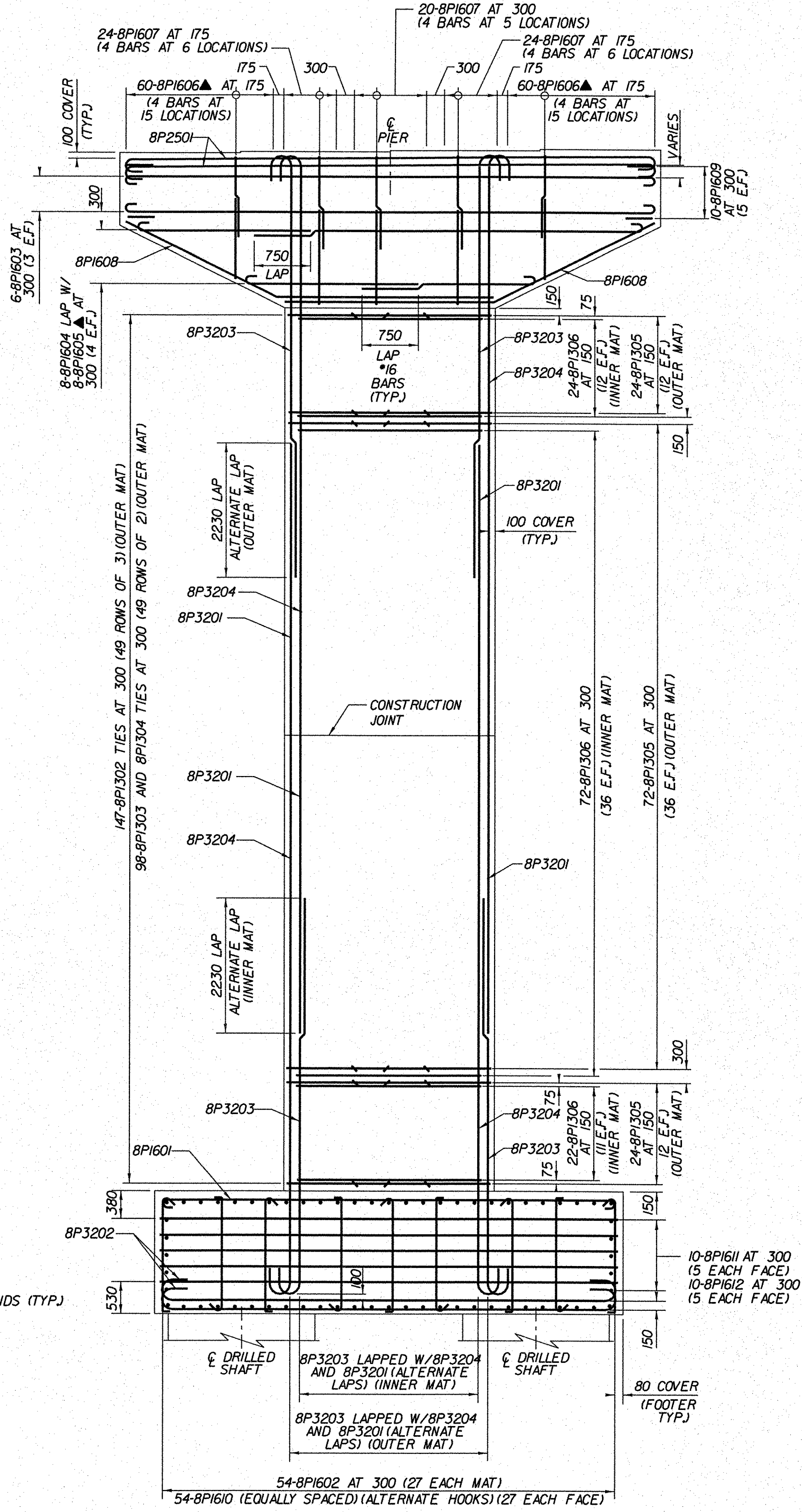


**COLUMN**



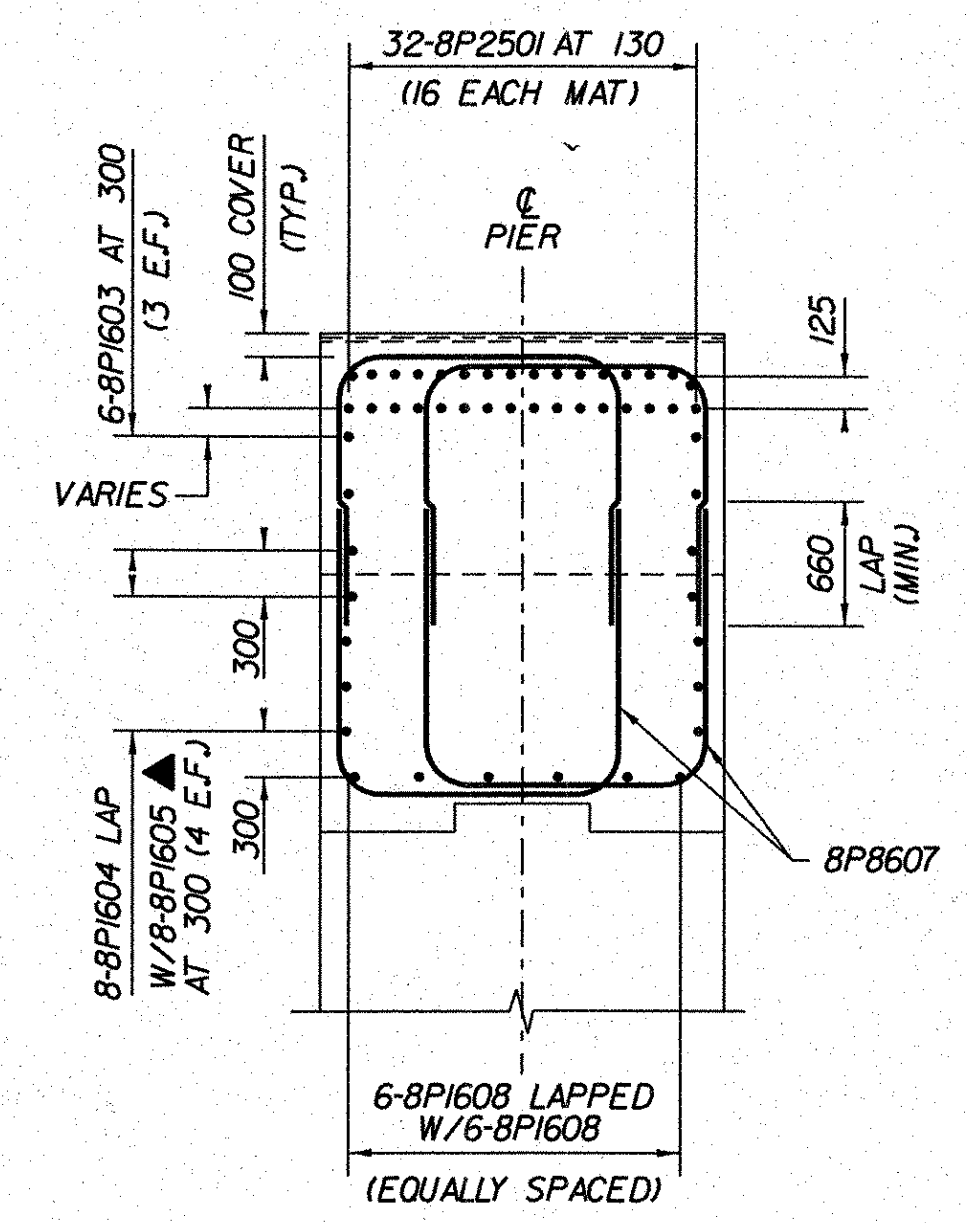
**PIER CAP REINFORCEMENT PLANS**

SCALE 1:40



**REINFORCEMENT ELEVATION**

SCALE 1:50



**SECTION A-A**

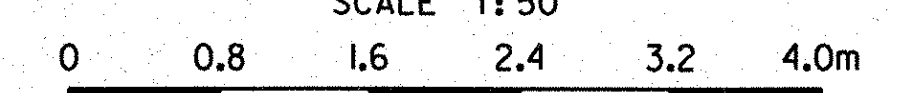
SCALE 1:40

**LEGEND:**

- F.F. - FRONT FACE
- B.F. - BACK FACE
- E.F. - EACH FACE
- C.B. - CORNER BAR
- C.J. - CONSTRUCTION JOINT
- ▲ - CUT TO FIT IN FIELD



SCALE 1:50



SCALE 1:40

<b>STATE OF VERMONT AGENCY OF TRANSPORTATION</b>			
Town Of	BENNINGTON	Bridge No.	BI55
Highway No.	VT RTE 279	Log Sta.	
		Surv. Sta.	
VT ROUTE 279 & RAMPS OVER ROARING BRANCH OF WALLOOMSAC RIVER			
<b>PIER 8 REINFORCEMENT (RAMP A)</b>			
Designed By	B.J. CARLSON	Drawn By	R.G. COCOL
Checked By	K.M. WOJTKOWSKI	Date	06/08
		Bridge Design Supervisor	K.M. WOJTKOWSKI
		Date	06/08
PROJECT	BENNINGTON		
	AC NH 019-1(51)		
TVGA CAD Drawing No.	RampAP8Reb.dgn		
	Date 02/02/2009		
Bridge Sheet No.	BR280	Sheet	267 of 367