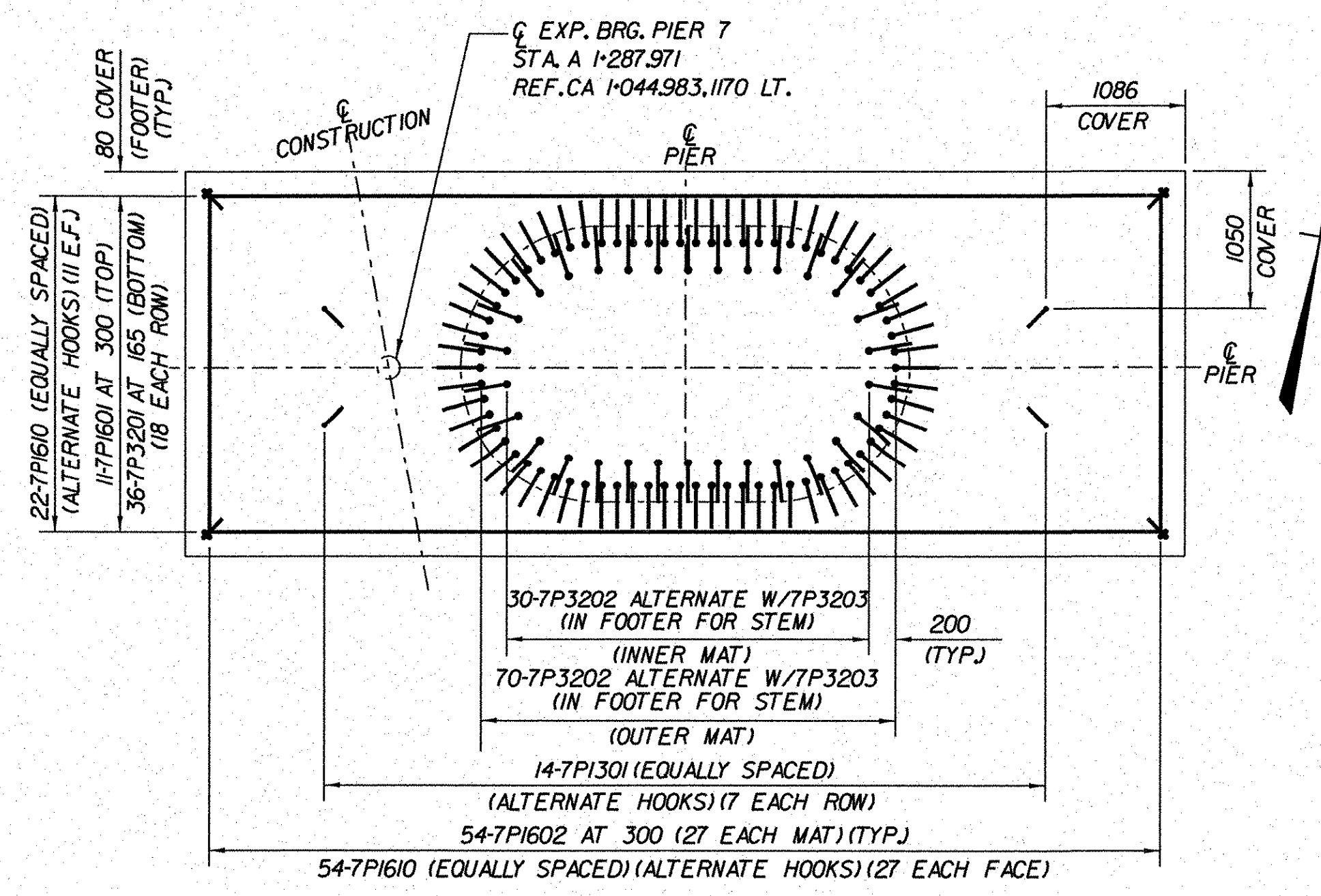
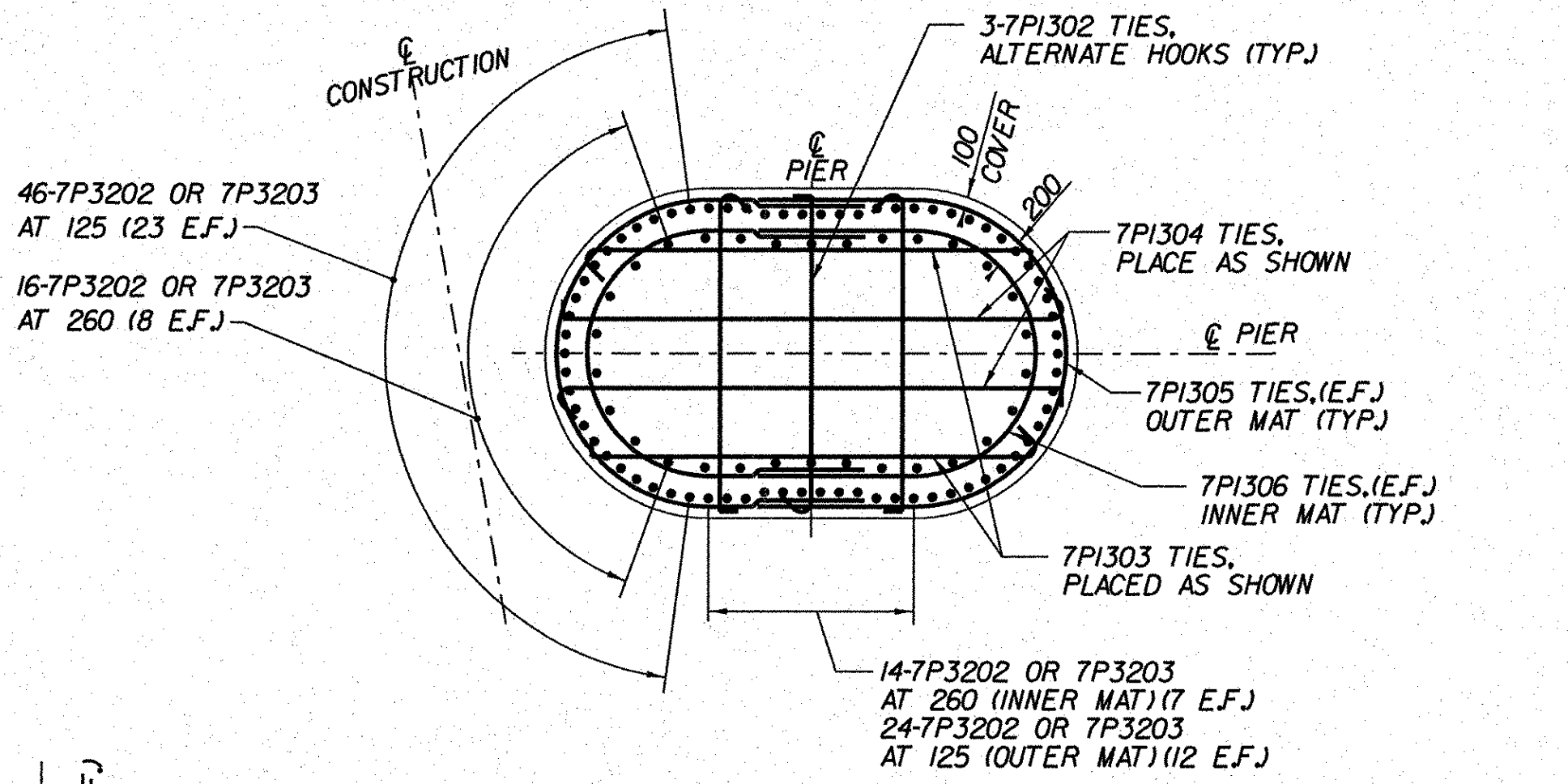


NOTES:

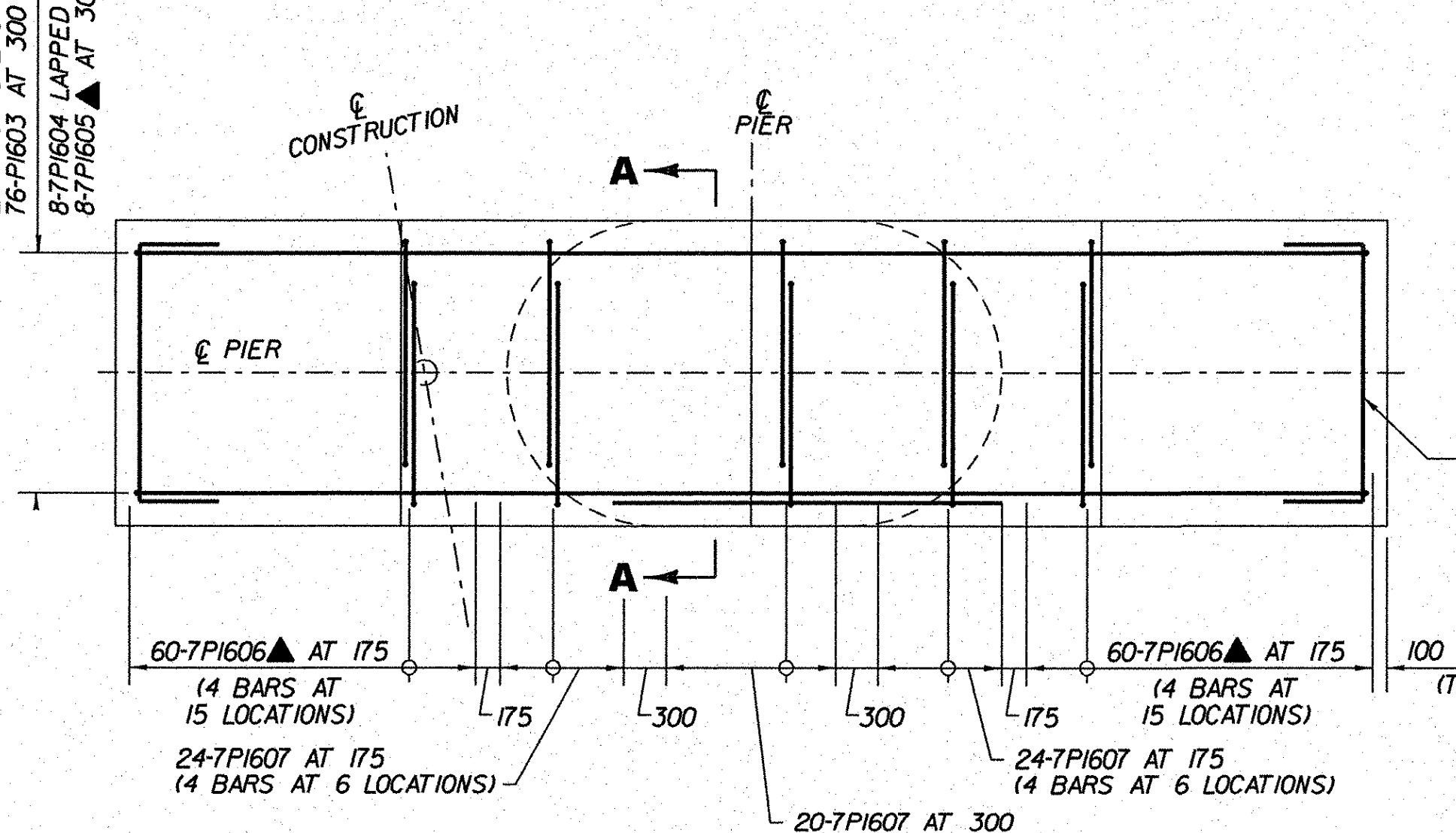
1. DRILLED SHAFT REINFORCEMENT NOT SHOWN FOR CLARITY. SEE BRIDGE SHEET BR300 FOR DETAILS.



FOOTING

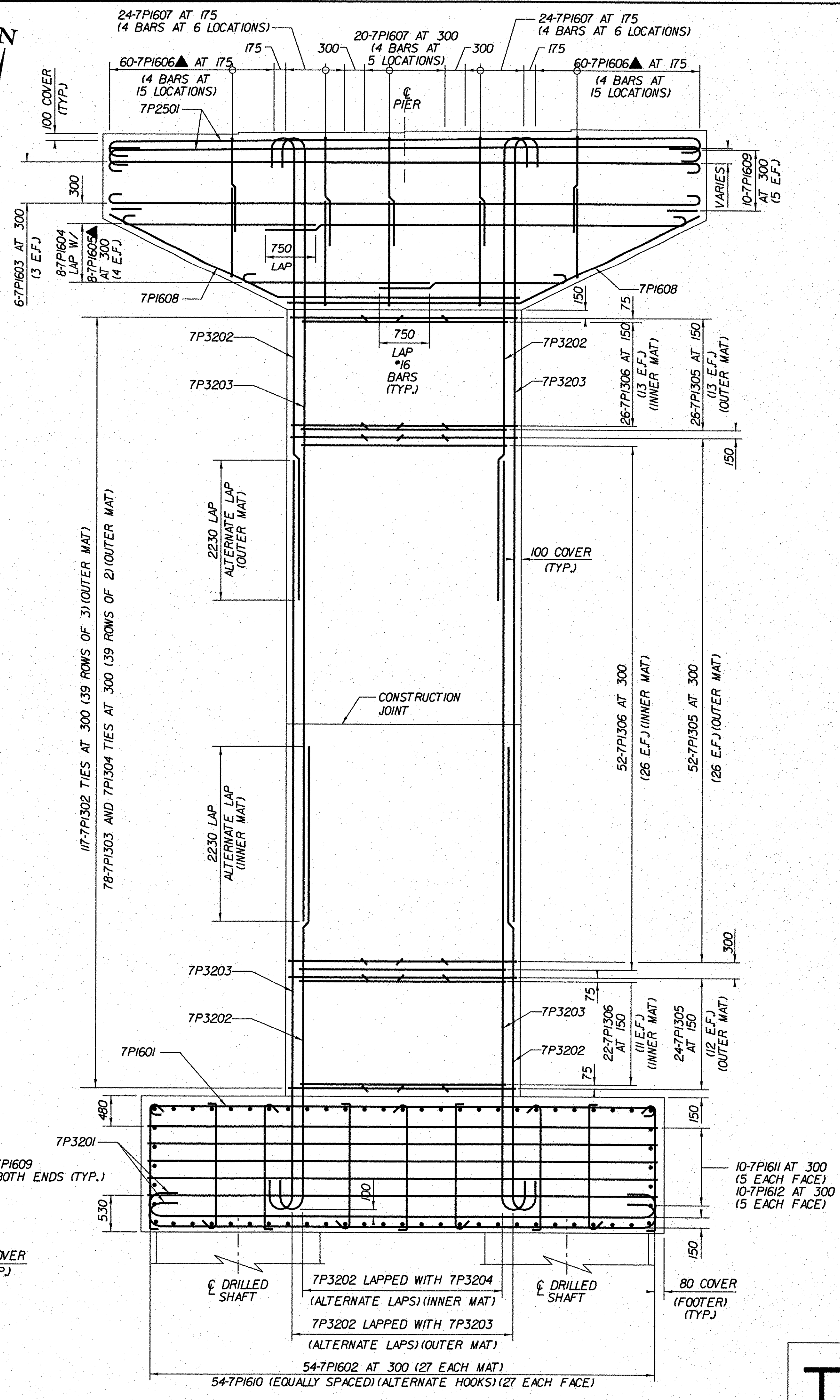


COLUMN



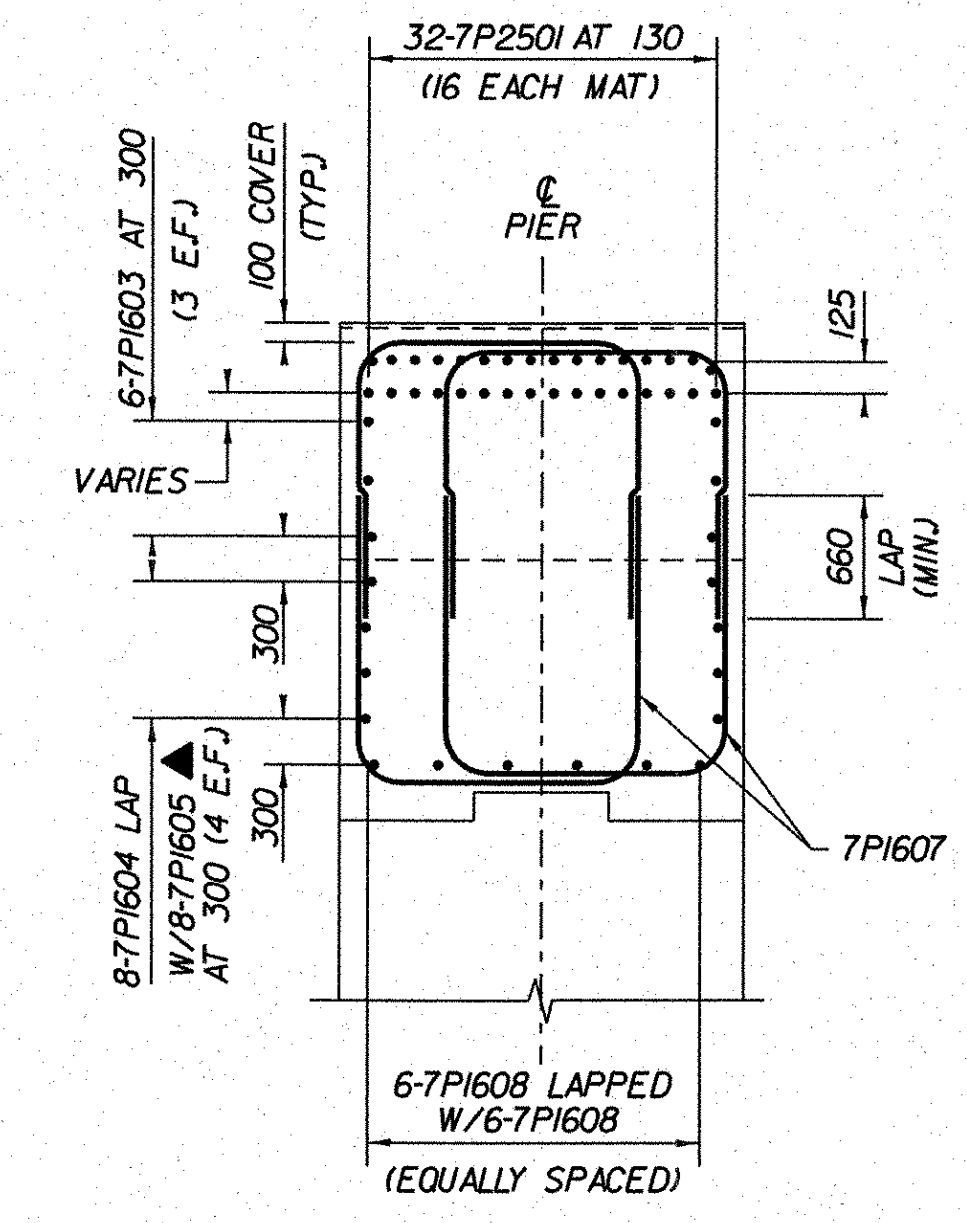
PIER CAP REINFORCEMENT PLANS

SCALE 1:40



REINFORCEMENT ELEVATION

SCALE 1:40

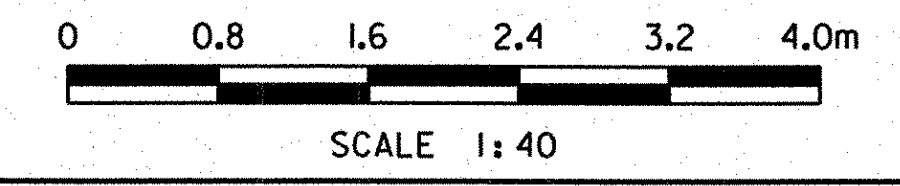


SECTION A-A

SCALE 1:40

LEGEND:

- F.F. - FRONT FACE
- B.F. - BACK FACE
- E.F. - EACH FACE
- C.B. - CORNER BAR
- C.J. - CONSTRUCTION JOINT
- ▲ - CUT TO FIT IN FIELD



STATE OF VERMONT AGENCY OF TRANSPORTATION	
Town Of BENNINGTON	Bridge No. B15S
Highway No. VT RTE 279	Log Sta. Surv. Sta.
PIER 7 REINFORCEMENT (RAMP A)	
Designed By B.J. CARLSON	Drawn By R.G. COCOL
Checked By K.M. WOJTKOWSKI Date 06/08	Bridge Design Supervisor K.M. WOJTKOWSKI Date 06/08
PROJECT BENNINGTON	PROJECT NO. AC NH 019-1(51)
TVGA CAD Drawing No. RampAPTReb.dgn	Date 02/02/2009
Bridge Sheet No. BR279	Sheet 266 of 367

