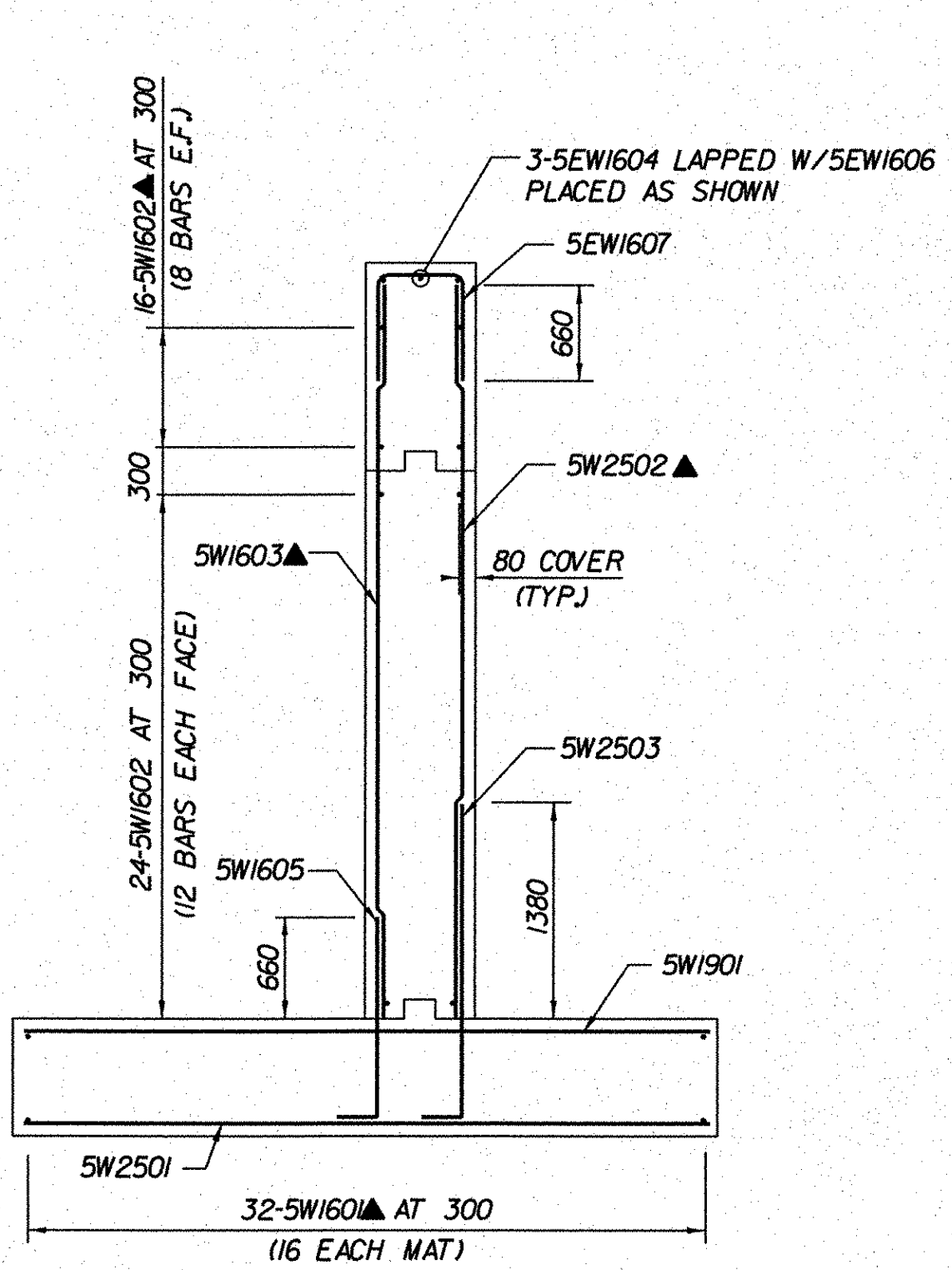
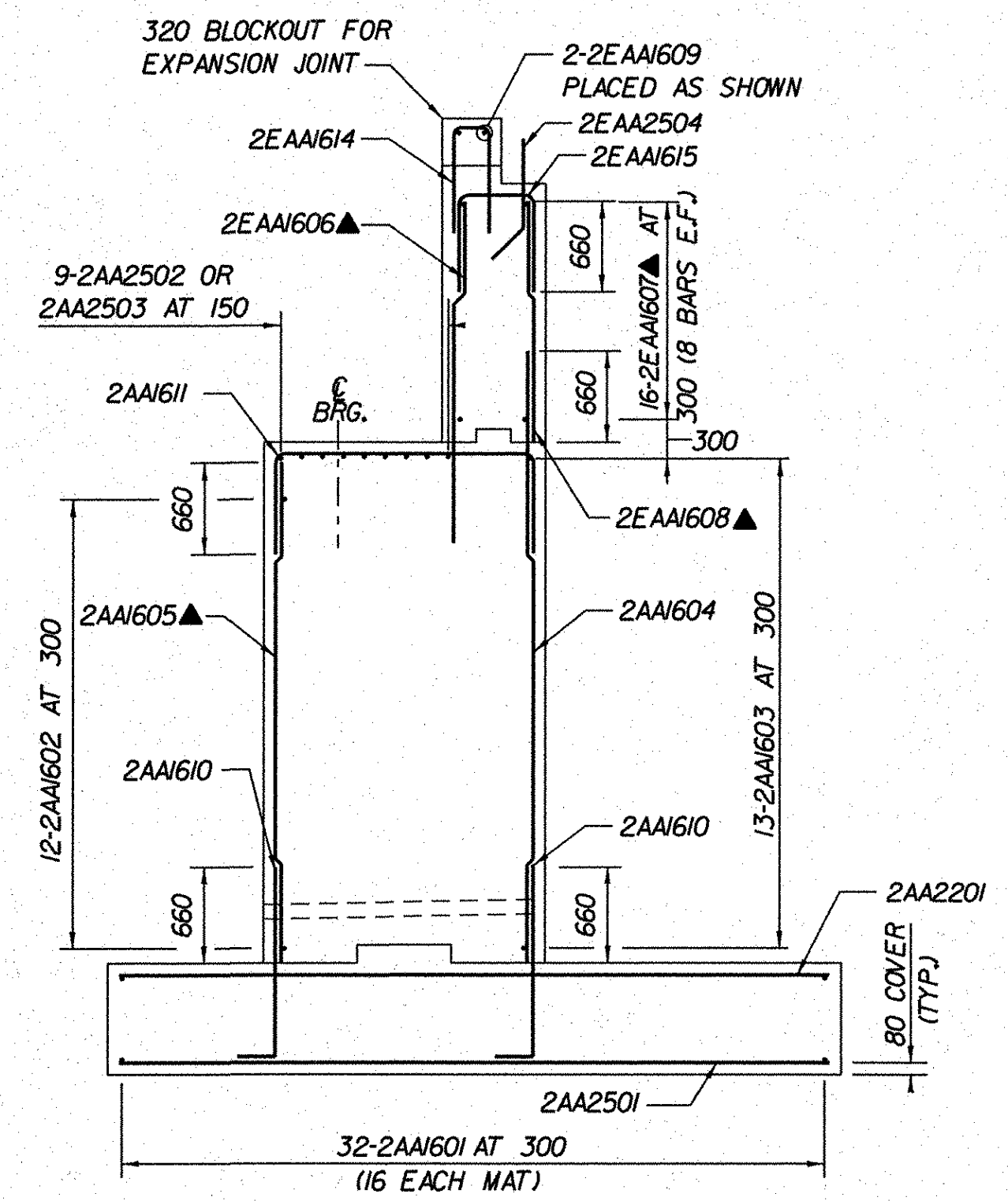


ELEVATION
(ABUTMENT 2 - RAMP A AND WINGWALL NO. 5)
 SCALE 1:50

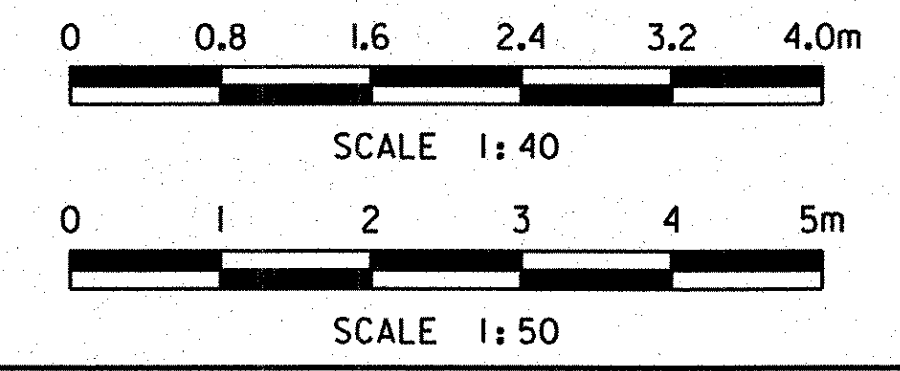


SECTION B-B
(WINGWALL NO. 5)
 SCALE 1:40
 (SEE BRIDGE SHEET BR275 FOR SECTION LOCATION)



SECTION A-A
(ABUTMENT 2 - RAMP A)
 SCALE 1:40
 (SEE BRIDGE SHEET BR275 FOR SECTION LOCATION)

- LEGEND:**
- F.F. - FRONT FACE
 - B.F. - BACK FACE
 - E.F. - EACH FACE
 - C.B. - CORNER BAR
 - C.J. - CONSTRUCTION JOINT
 - ▲ - CUT TO FIT IN FIELD



STATE OF VERMONT	
AGENCY OF TRANSPORTATION	
Town Of BENNINGTON	Bridge No. B155
Highway No. VT RTE 279	Log Sta.
	Surv. Sta.
VT ROUTE 279 & RAMPS OVER ROARING BRANCH OF WALLOOMSAC RIVER	
ABUTMENT 2 REINFORCEMENT DETAILS (RAMP A)	
Designed By B.J. CARLSON	Drawn By R.G. COCOL
Checked By K.M. WOJTKOWSKI	Date 06/08
Bridge Design Supervisor K.M. WOJTKOWSKI	Date 06/08
PROJECT BENNINGTON	PROJECT NO. AC NH 019-1(51)
TVGA CAD Drawing No. RmpAA2RebDet.dgn	Date 02/02/2009
Bridge Sheet No. BR276	Sheet 263 of 367

