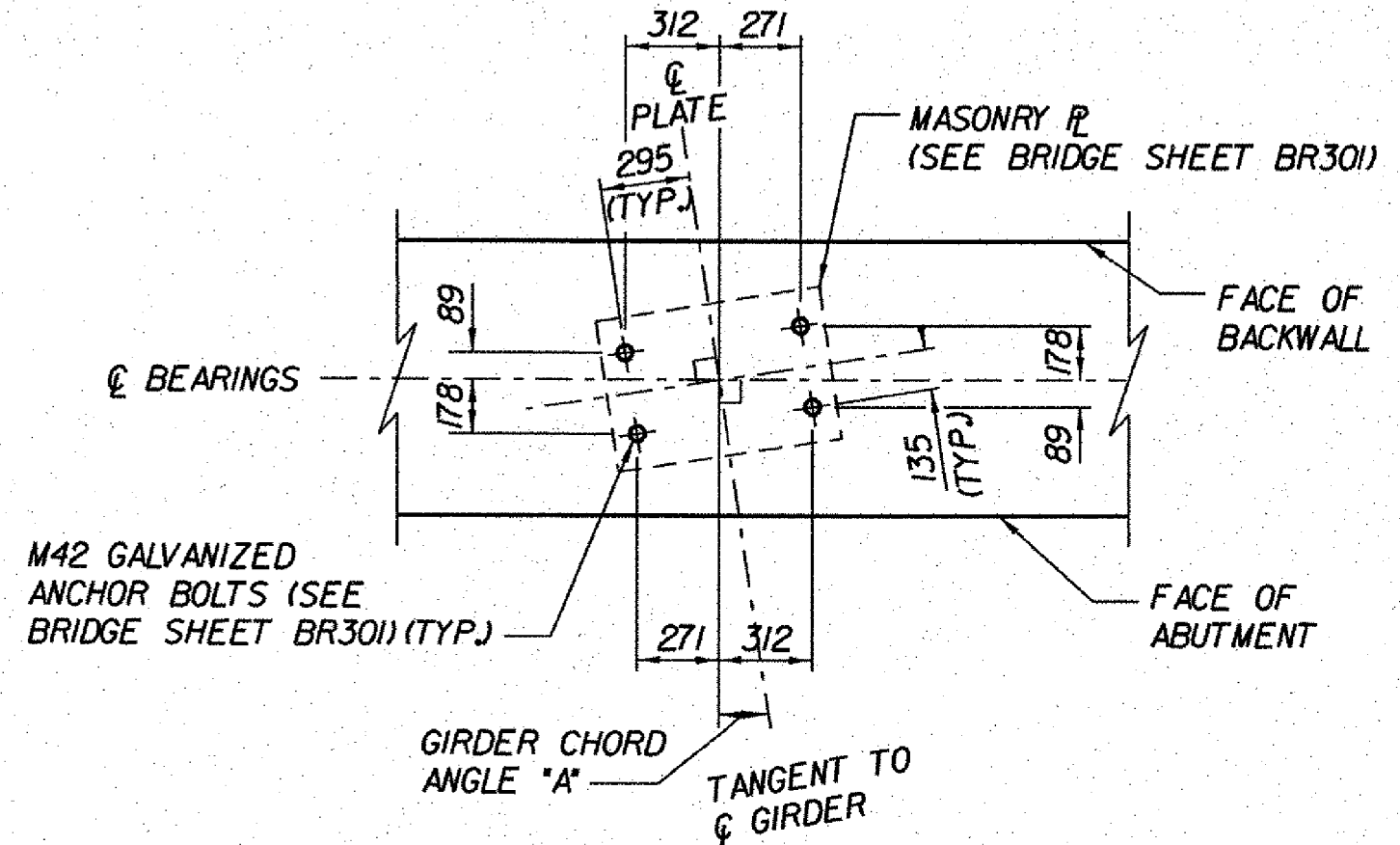


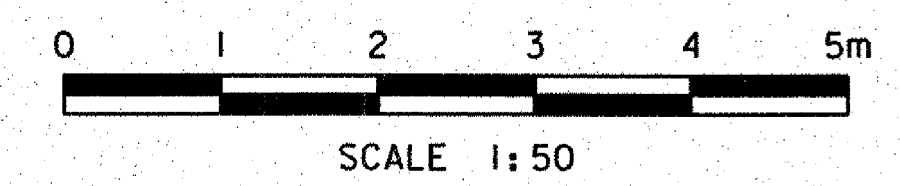
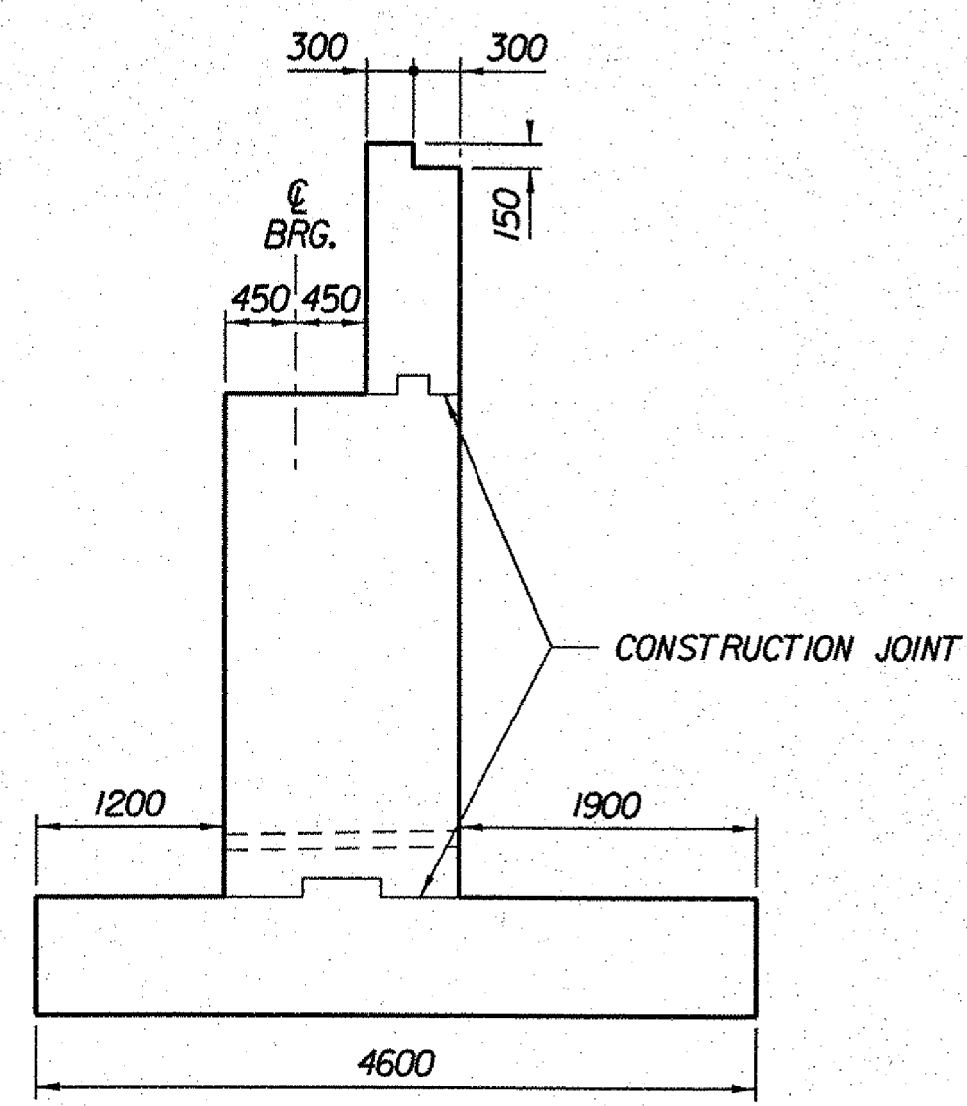
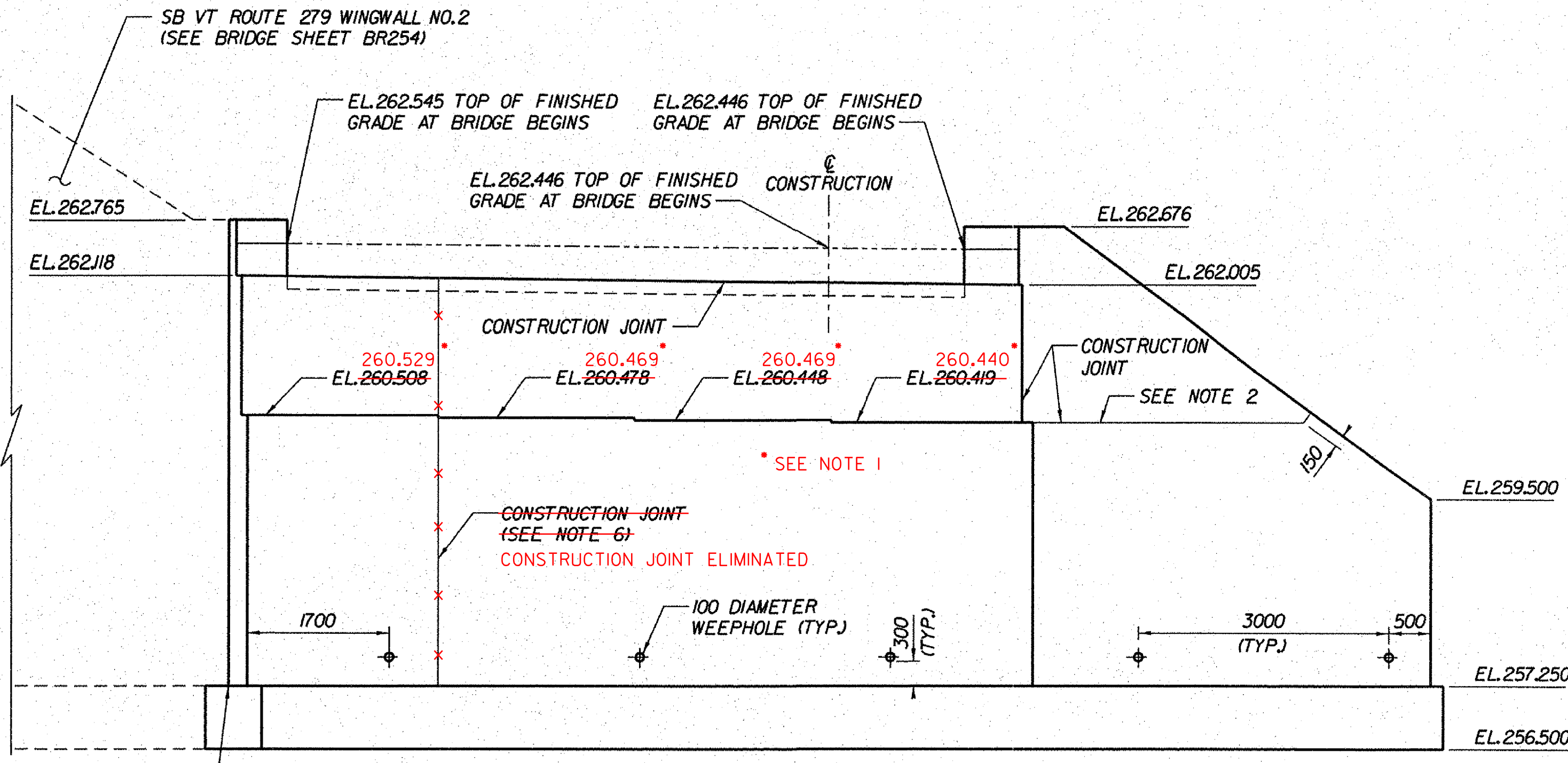
**NOTES:**

1. ABUTMENT SEAT ELEVATIONS MAY HAVE TO BE ADJUSTED TO ACCOMMODATE THE ACTUAL BEARINGS FURNISHED. IT IS THE RESPONSIBILITY OF THE CONTRACTOR TO COORDINATE ANY CHANGES IN THE BEARINGS WHICH MAY AFFECT THE ABUTMENT SEAT ELEVATIONS OR DIMENSIONS.
2. NO CONCRETE SHALL BE PLACED ABOVE THE WINGWALL HORIZONTAL CONSTRUCTION JOINT UNTIL THE BEAM PROFILES HAVE BEEN TAKEN AND FINAL FINISHED GRADE OF THE DECK IS APPROVED BY THE ENGINEER.
3. LONGITUDINAL AND TRANSVERSE BRIDGE SEAT REINFORCING SPACING SHALL BE MODIFIED AS NECESSARY TO ASSURE THAT THERE WILL BE NO CONFLICT WITH THE BEARING DEVICE ANCHOR BOLTS.
4. FOR DIMENSIONS USED IN DETERMINING THE THEORETICAL BRIDGE SEAT ELEVATIONS, SEE ABUTMENT 1 FIXED BEARING DETAILS, BRIDGE SHEET BR301.
5. FOR ADDITIONAL LAYOUT INFORMATION, SEE FRAMING PLAN (SHEET 2 OF 2), (RAMP A), BRIDGE SHEET BR265.
6. FOR THE TYPICAL CONCRETE CONSTRUCTION JOINT AND EXPANSION JOINT DETAILS, SEE TYPICAL BRIDGE DETAILS, BRIDGE SHEET BR305.



**GIRDER CHORD ANGLE**

LOCATION	"A"
G1	8° 38' 36"
G2	8° 38' 00"
G3	8° 37' 24"
G4	8° 36' 48"



**STATE OF VERMONT  
AGENCY OF TRANSPORTATION**

Town Of BENNINGTON	Bridge No. BI5S
Highway No. VT RTE 279	Log Sta. Surv. Sta.
VT ROUTE 279 & RAMPS OVER ROARING BRANCH OF WALLOOMSAC RIVER	
<b>ABUTMENT 1 MASONRY (RAMP A)</b>	
Designed By B.J. CARLSON	Drawn By D.W. SHAFFER
Checked By K.M. WOJTKOWSKI	Bridge Design Supervisor K.M. WOJTKOWSKI
Date 05/08	Date 05/08
PROJECT BENNINGTON	PROJECT NO. AC NH 019-1(51)
TVGA CAD Drawing No. RmpAAIConc.dgn	Date 02/02/2009
Bridge Sheet No. BR271	Sheet 258 of 367



EXPANSION JOINT 25 - 707J4 PREFORMED JOINT FILLER, INCIDENTAL TO CONCRETE ITEM (SEE NOTE 6)