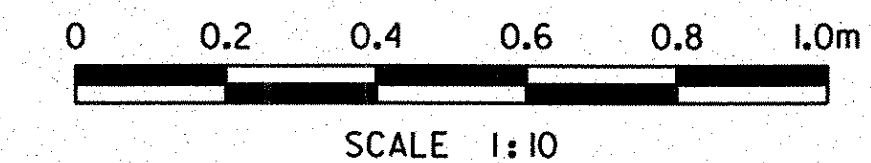
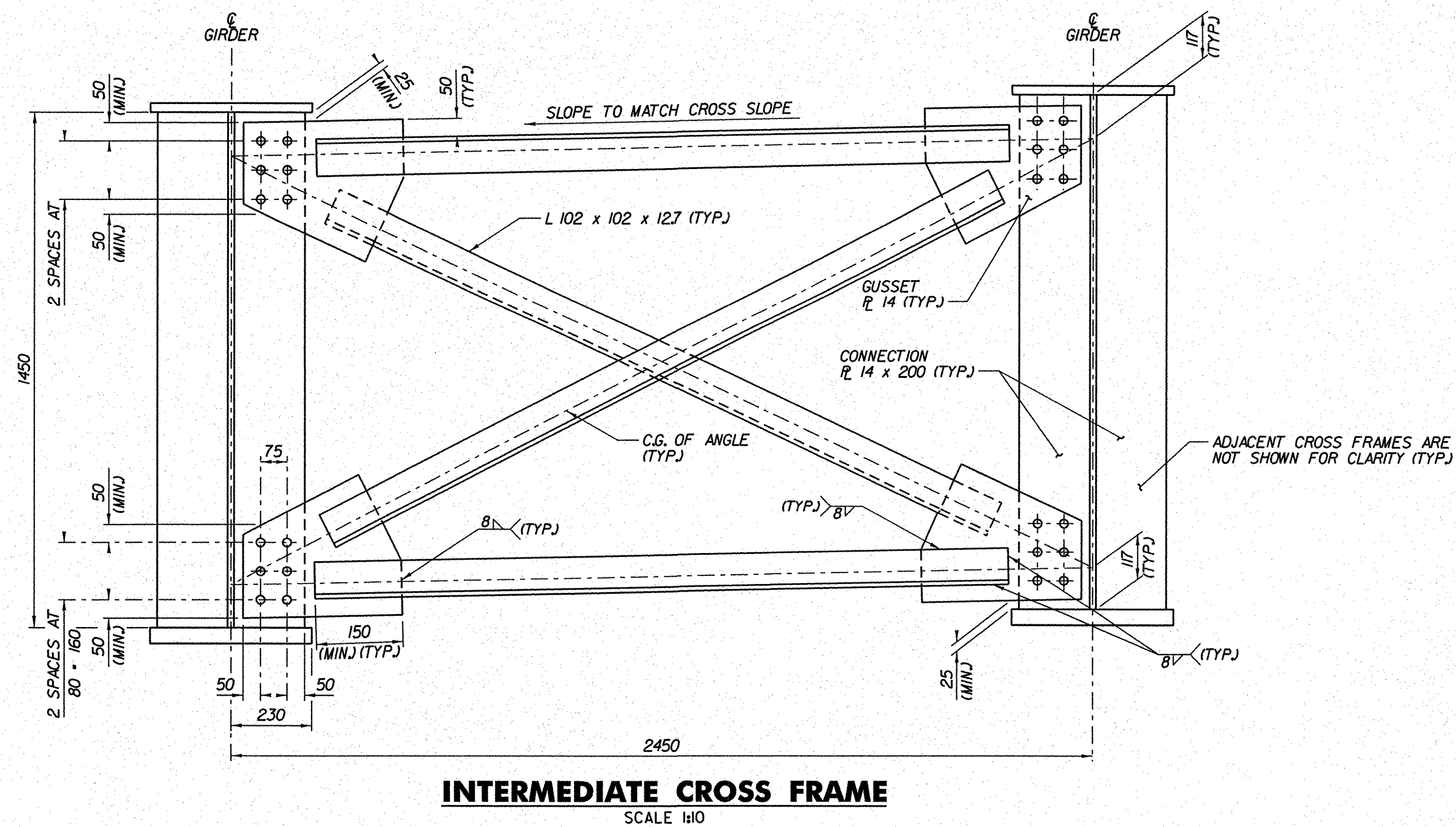
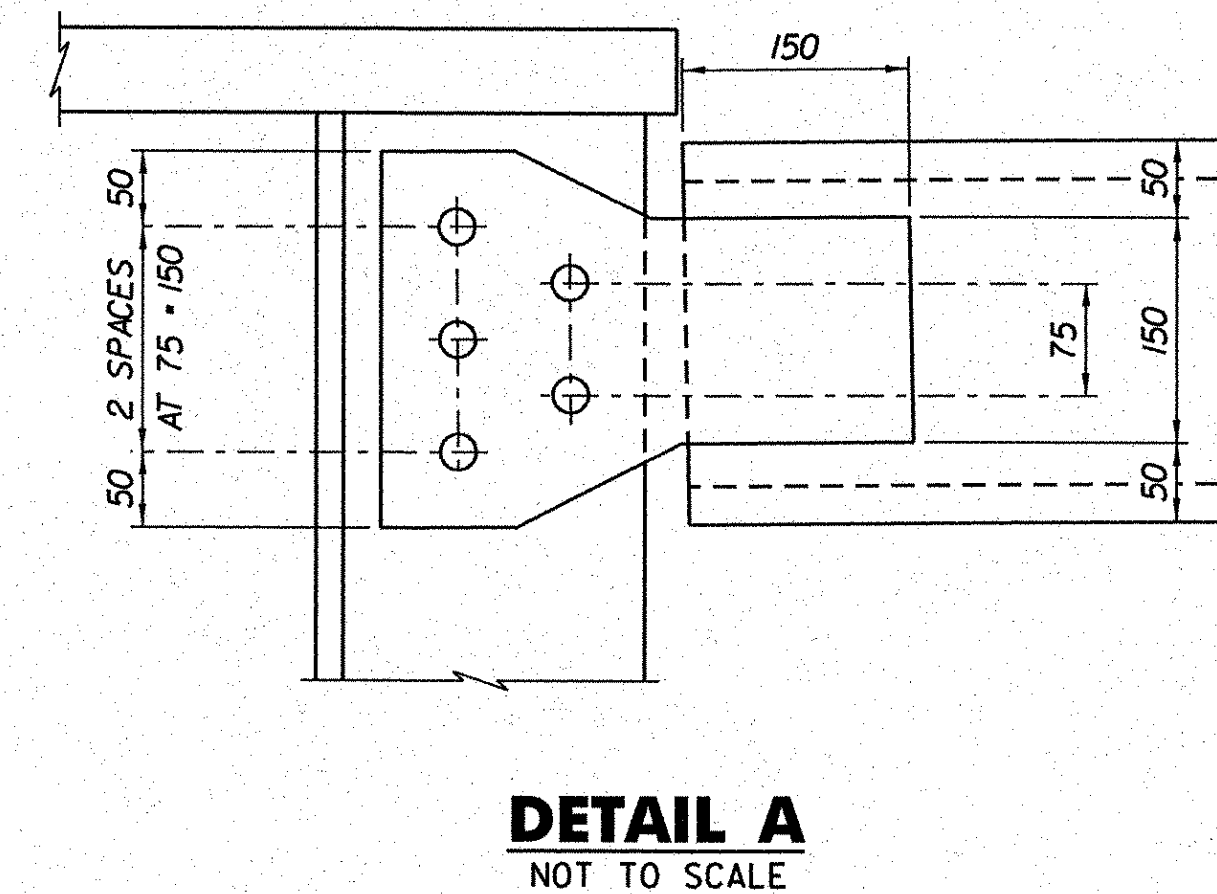
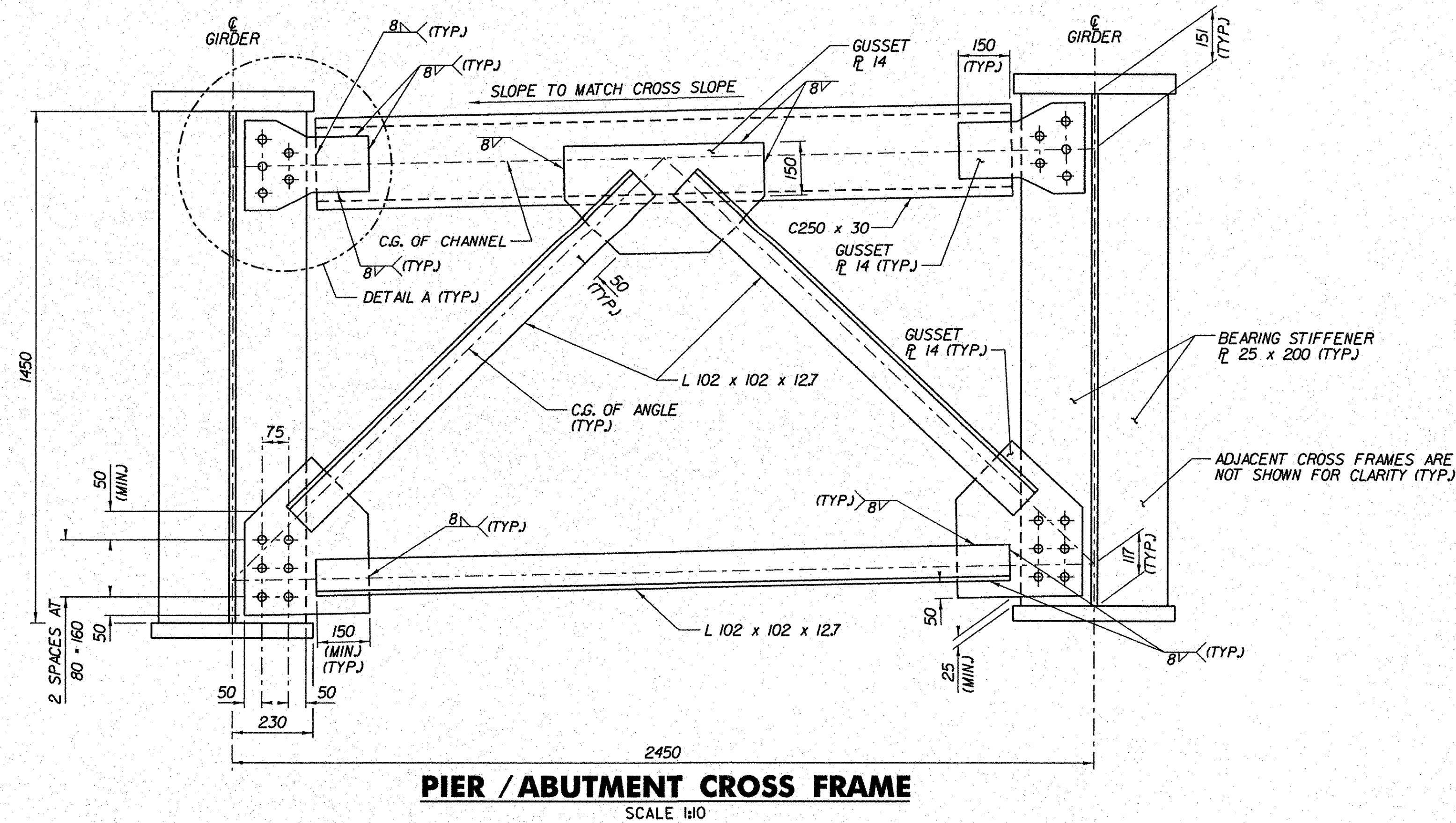


NOTES:

1. THE CONTRACTOR MAY PLACE CROSS FRAMES ON EITHER SIDE OF THE BEARING STIFFENERS OR CONNECTION PLATES AS NECESSARY TO CORRECT ALIGNMENT PROVIDED THERE WILL BE NO INTERFERENCE WITH OTHER STRUCTURAL DETAILS.
2. ALL CONNECTIONS SHALL BE MADE USING 22 DIAMETER AASHTO M164M BOLTS. ALL HOLES IN THE CONNECTION PLATES SHALL BE 24 DIAMETER.
3. ALL CROSS FRAME MEMBERS, INCLUDING GUSSET PLATES, REQUIRE CHARPY V-NOTCH TESTING IN ACCORDANCE WITH SECTION 714.01 OF THE SPECIFICATIONS.



**STATE OF VERMONT
AGENCY OF TRANSPORTATION**

Town Of	BENNINGTON	Bridge No.	BI5S, BI5N
Highway No.	VT RTE 279	Log Sta.	
		Surv. Sta.	
VT ROUTE 279 & RAMPS OVER ROARING BRANCH OF WALLOOMSAC RIVER			

STEEL DETAILS (SHEET 2 OF 2) (RAMPS A AND D)

Designed By	J.J. MANUSE	Drawn By	D.W. SHAFFER
Checked By	Date	Bridge Design Supervisor	
B.J. CARLSON	05/08	K.M. WOJTKOWSKI	Date 05/08
PROJECT	PROJECT NO.		
BENNINGTON	AC NH 019-(151)		
TVGA CAD Drawing No.	RampSteelDet2.dgn	Date	02/02/2009
Bridge Sheet No.	BR270	Sheet	257 of 367