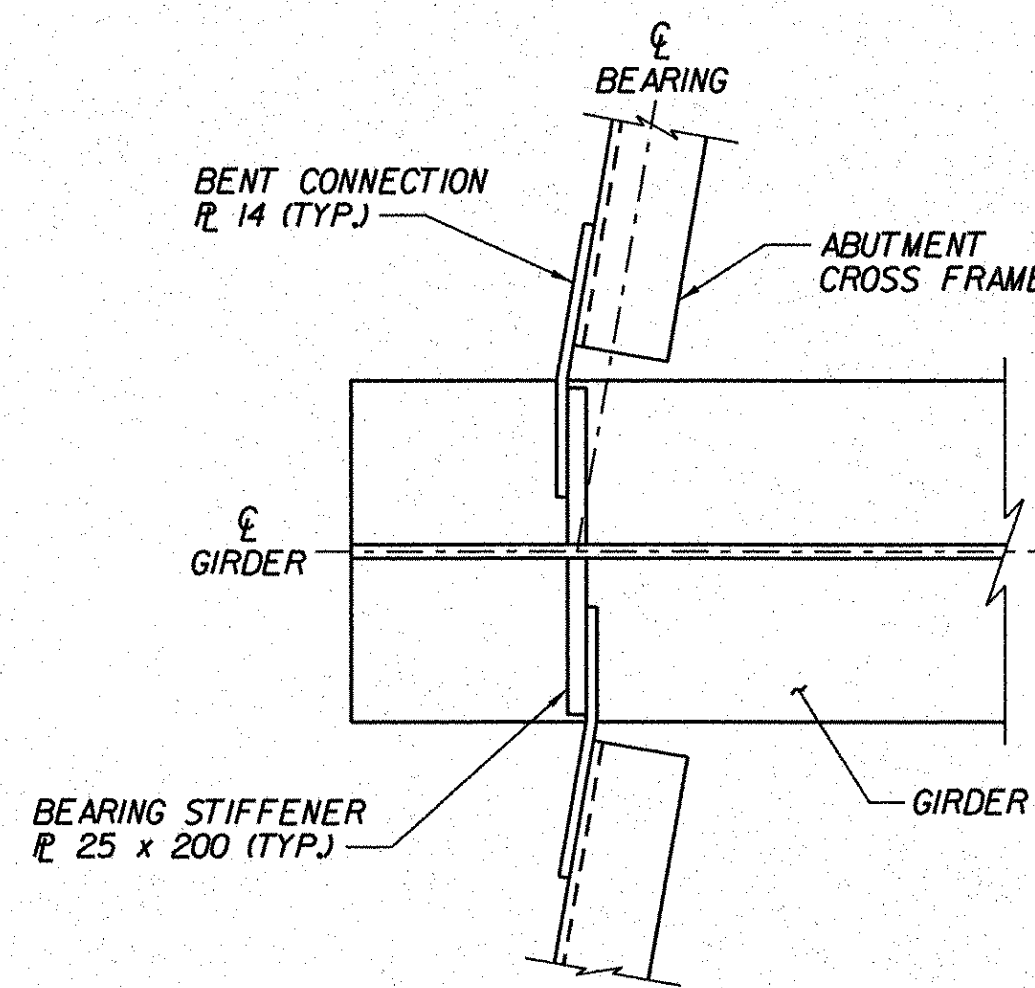
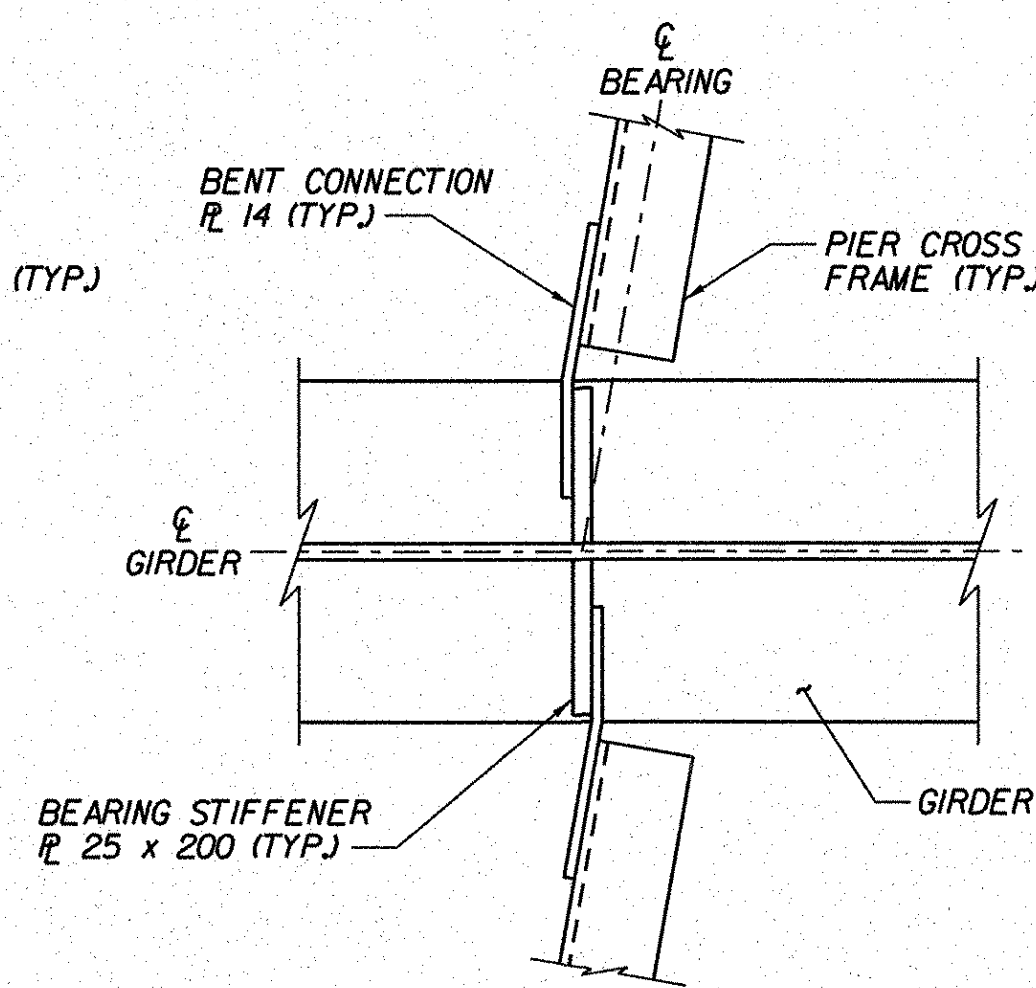


NOTES:

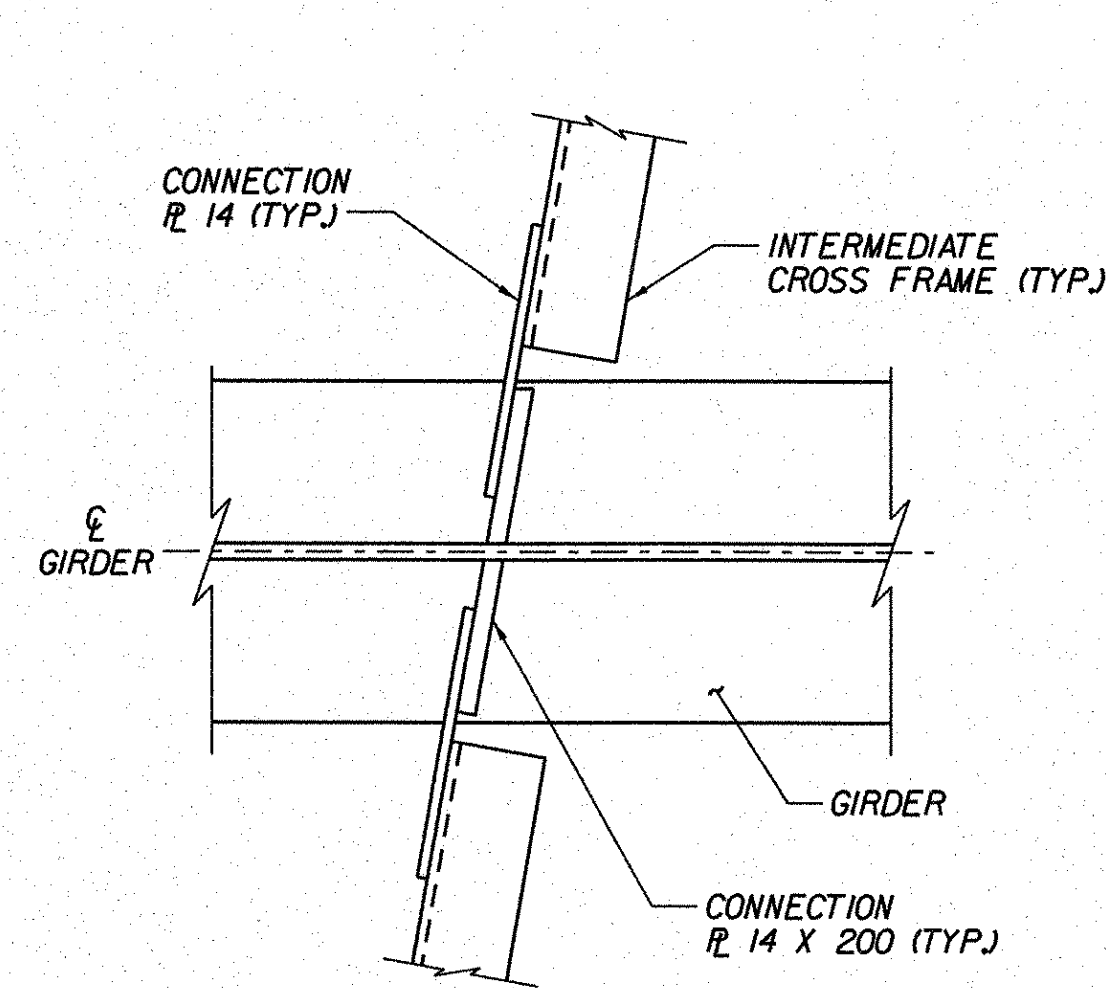
1. TOP AND BOTTOM EDGES OF BEARING STIFFENERS SHALL BE CUT AT RIGHT ANGLES TO THE WEB.
2. WELDS SHALL BE TERMINATED 6 MINIMUM AND 13 MAXIMUM BEFORE THE EDGES OF THE GUSSET PLATES.



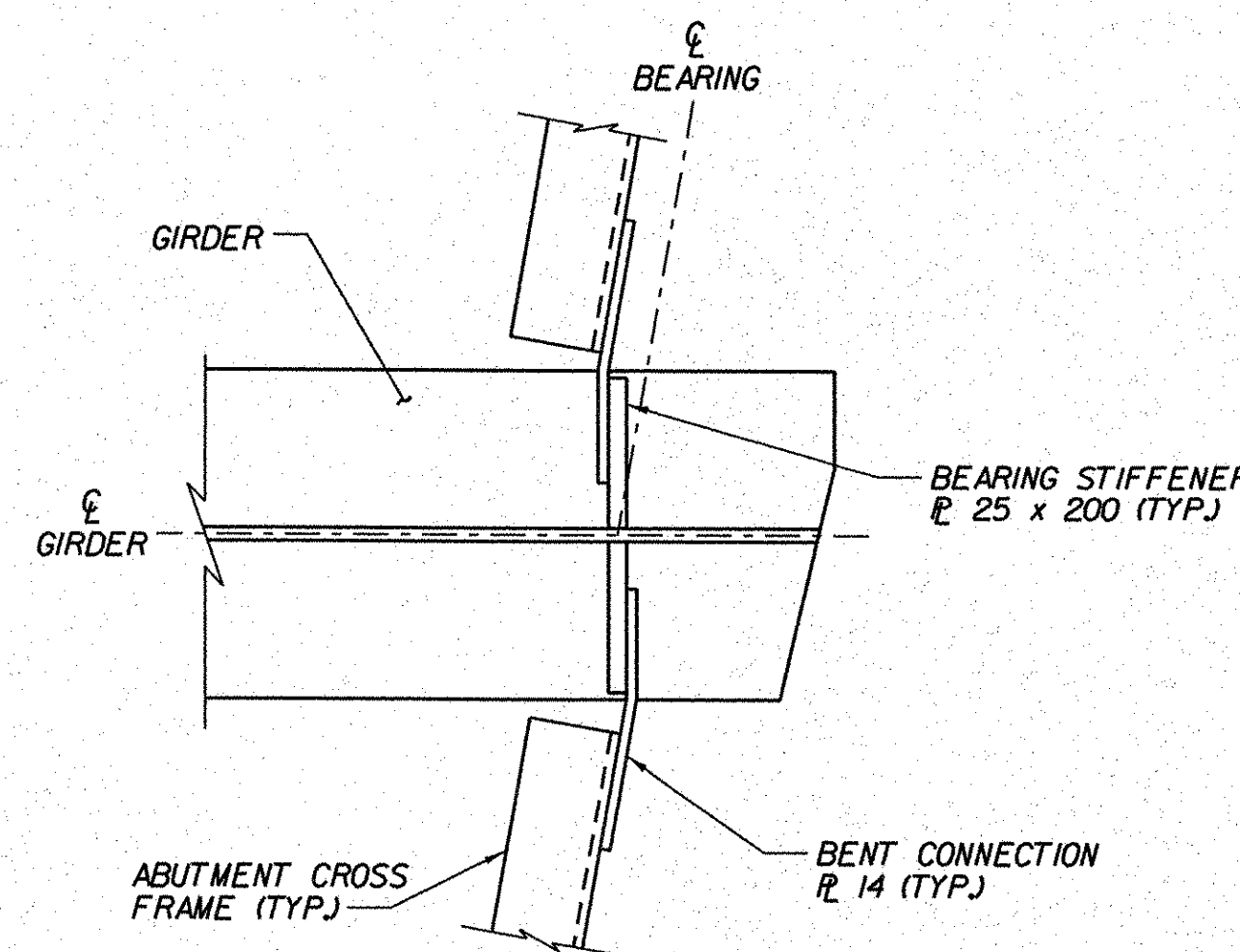
PLAN AT FIXED ABUTMENT
NOT TO SCALE



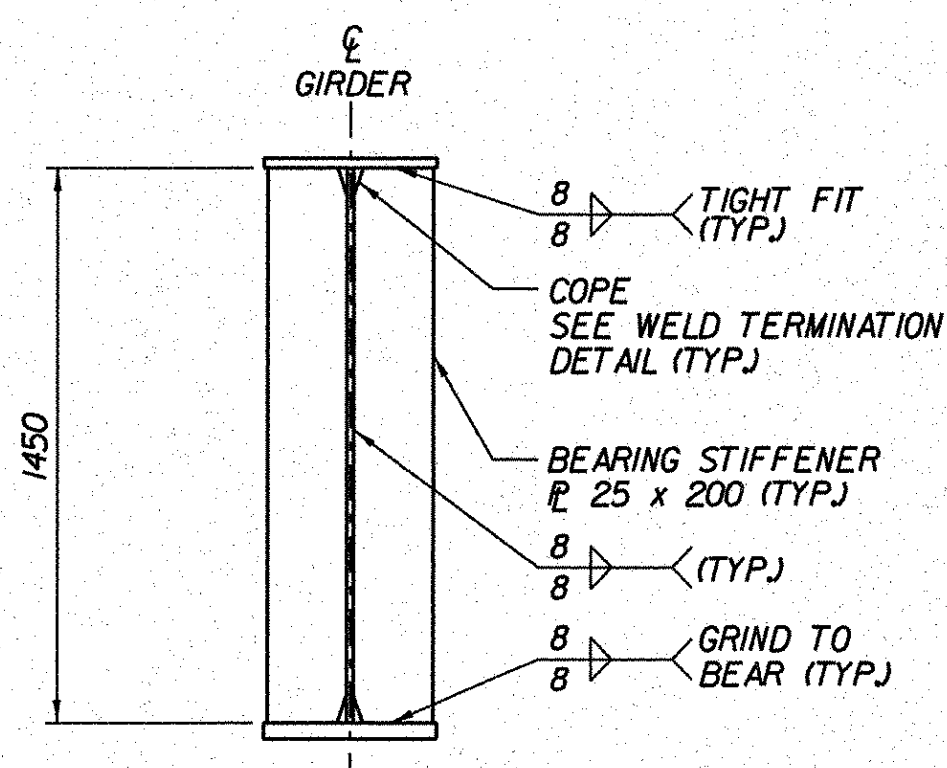
PLAN AT PIERS
NOT TO SCALE



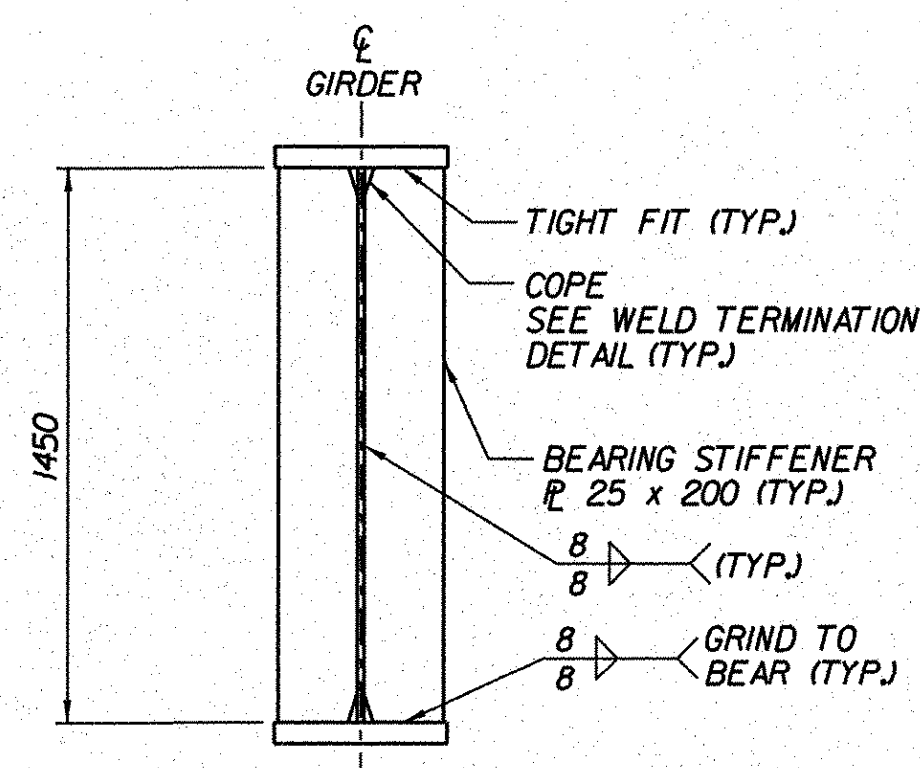
PLAN AT INTERMEDIATE CROSS FRAMES
NOT TO SCALE



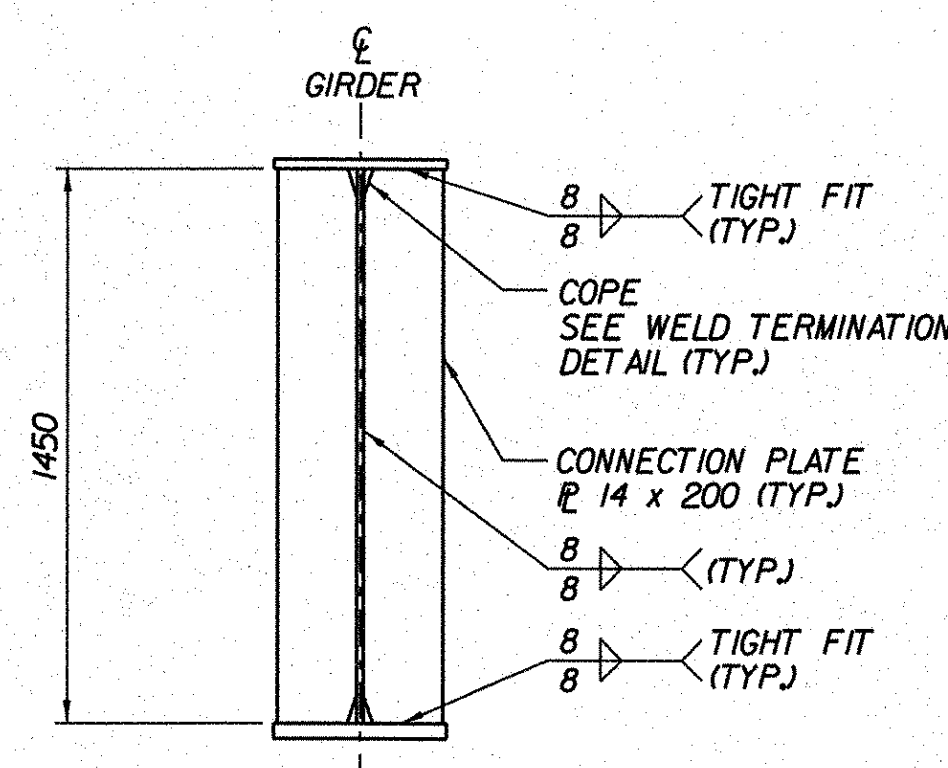
PLAN AT EXPANSION ABUTMENT
NOT TO SCALE



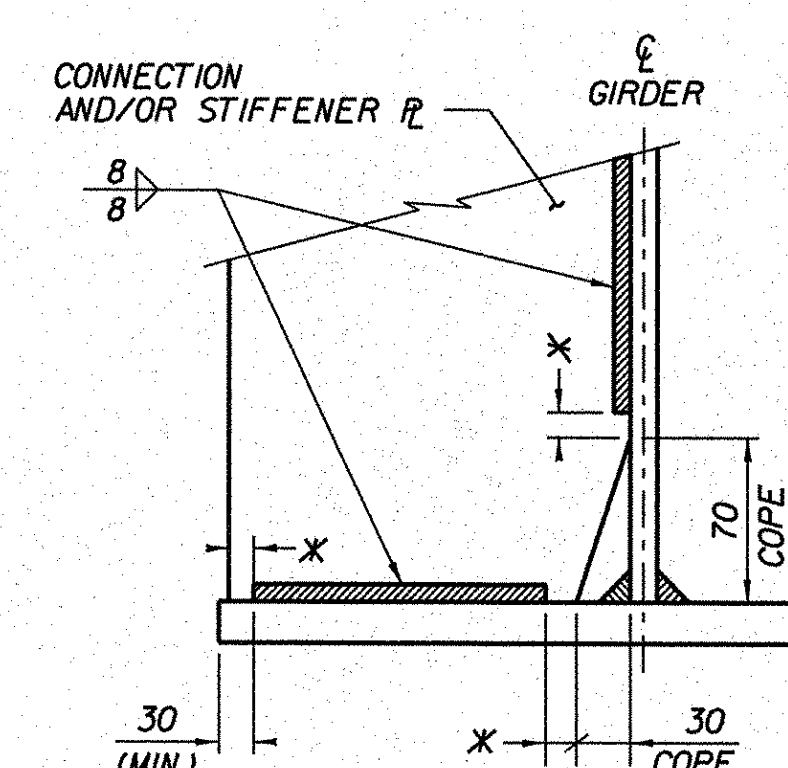
ABUTMENT BEARING STIFFENER
NOT TO SCALE



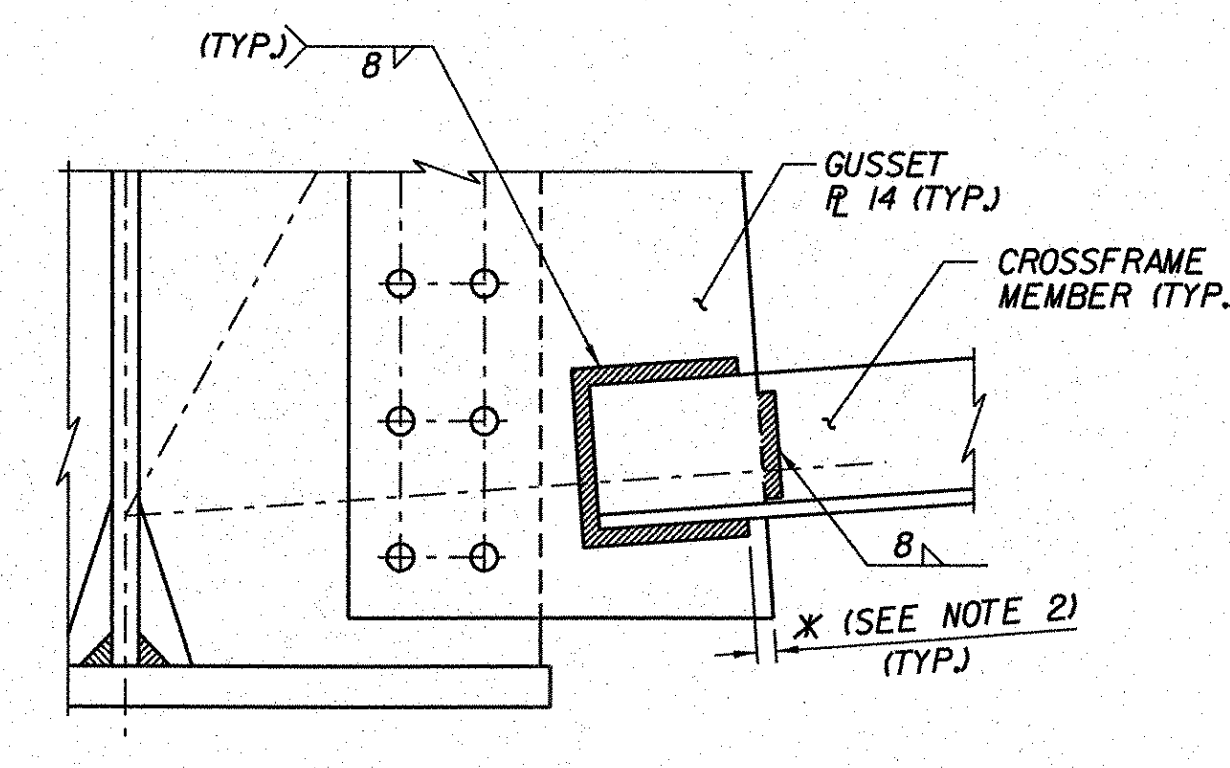
PIER BEARING STIFFENER
NOT TO SCALE



INTERMEDIATE CONNECTION PLATE
NOT TO SCALE

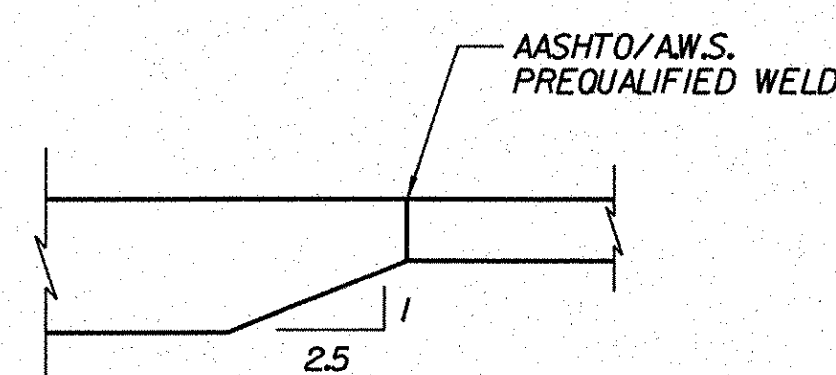


TYPICAL WELD TERMINATION AND COPING DETAIL
NOT TO SCALE

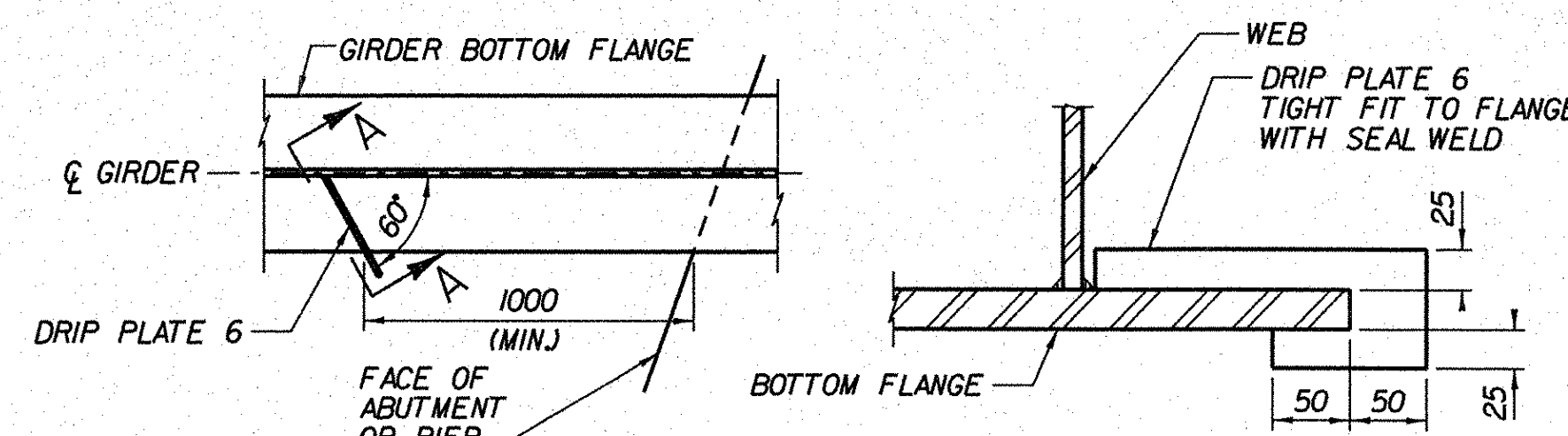


TYPICAL WELD AT CROSS PLATE /GUSSET PLATE
NOT TO SCALE

* NO WELD PLACED FOR 10 MINIMUM 20 MAXIMUM (EXCEPT MUST MAINTAIN 30 MINIMUM FROM EDGE OF FLANGE)



FLANGE BUTT SPlice DETAIL
NOT TO SCALE



SECTION A-A DRIP PLATE DETAIL
NOT TO SCALE

NOTE: DRIP PLATES SHALL BE PLACED ON OUTSIDE EDGE OF FASCIA GIRDER ON THE HIGH SIDE OF ALL PIERS AND LOW ABUTMENTS OR AS INDICATED ON PROJECT PLANS.

STATE OF VERMONT AGENCY OF TRANSPORTATION

Town Of	BENNINGTON	Bridge No.	BI55, BI5N
Highway No.	VT RTE 279	Log Sta.	
		Surv. Sta.	
VT ROUTE 279 & RAMPS OVER ROARING BRANCH OF WALLOOMSAC RIVER			
STEEL DETAILS (SHEET 1 OF 2) (RAMPS A AND D)			
Designed By	J.J. MANUSE	Drawn By	D.W. SHAFFER
Checked By	B.J. CARLSON	Date	05/08
		Bridge Design Supervisor	K.M. WOJTKOWSKI
		Date	05/08
PROJECT	BENNINGTON	PROJECT NO.	AC NH 019-1(51)
TVGA CAD Drawing No.	RampSteelDet.dgn	Date	02/02/2009
Bridge Sheet No.	BR269	Sheet	256 of 367