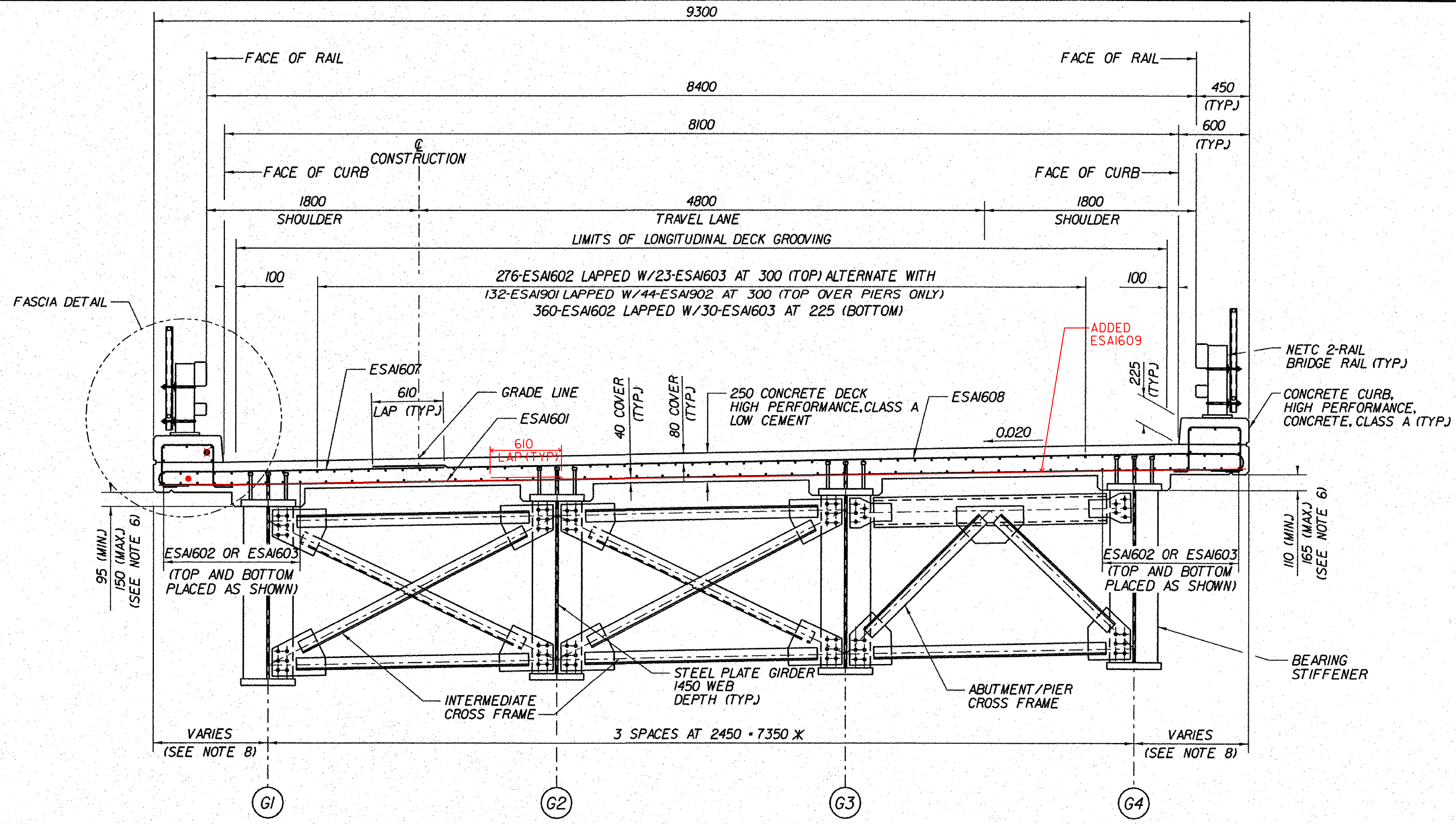


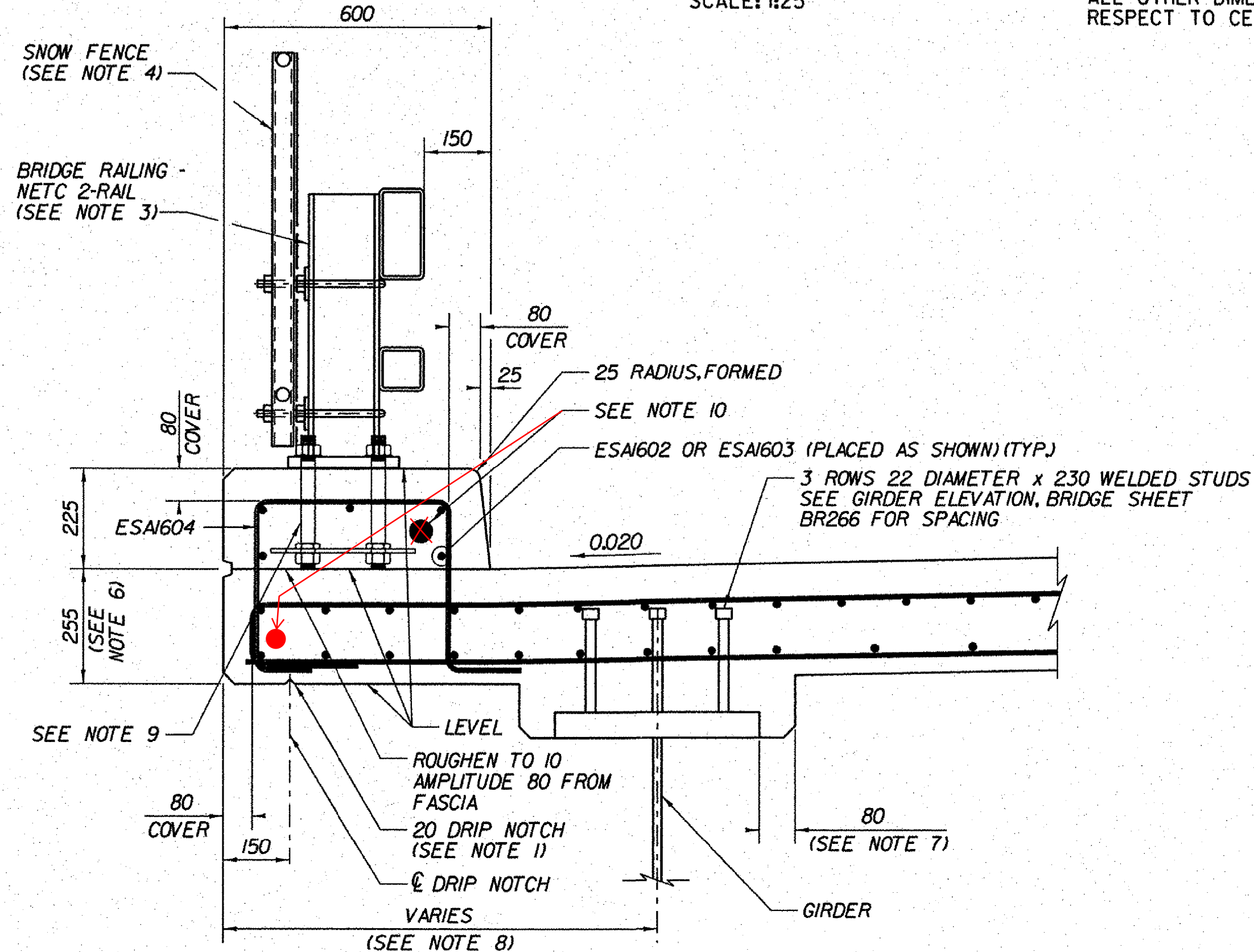
NOTES:

1. DRIP NOTCH TO BE TERMINATED AT THE ABUTMENT 1.5 m FROM THE END OF SLAB AT 45° TO THE FASCIA.
2. FOR DETAILS OF TRANSVERSE REINFORCEMENT SEE DECK REINFORCEMENT (RAMP A), BRIDGE SHEET BR262.
3. FOR DETAILS OF NETC BRIDGE RAIL AND APPROACH SECTION, SEE BRIDGE SHEET BR310 THROUGH BR312.
4. FOR SNOW FENCE LOCATIONS AND DETAILS, SEE BRIDGE SHEETS BR263, AND BR313.
5. FOR DETAILS OF PERMANENT CORRUGATED METAL FORMS AND REINFORCED GIRDER HAUNCH SEE TYPICAL BRIDGE DETAILS, BRIDGE SHEET BR305.
6. THE FINAL DEPTH OF THE FASCIA WILL BE DETERMINED BY THE FINAL TOP STEEL AND CONSTRUCTED GIRDER SEAT ELEVATIONS.
7. THE 80 HORIZONTAL SECTION MAY BE ELIMINATED FOR FORMING SYSTEMS DESIGNED FOR THE CONSTRUCTION OF VERTICAL HAUNCHES. SYSTEMS SHALL BE SUBMITTED FOR APPROVAL TO THE STRUCTURES ENGINEER. ALL VOIDS RESULTING FROM THIS FORMING SYSTEM SHALL BE FILLED IN ACCORDANCE WITH SUBSECTION 501.6(g) OF THE SPECIFICATIONS.
8. FOR FASCIA OVERHANG DIMENSIONS SEE DECK REINFORCEMENT (RAMP A), BRIDGE SHEET BR262.
9. RAMP A IS A BARE DECK BRIDGE. THE OVERALL CURB HEIGHT IS LESS THAN NORMALLY FOUND ON NETC 2-RAIL BRIDGE RAIL. THE BOTTOM OF THE ANCHOR STUDS WILL REST ON THE DECK SLAB.
10. A 50 DIAMETER SCH 80 PVC CONDUIT SHALL BE INSTALLED FOR HIGHWAY LIGHTING. THE CONDUIT SHALL BE PLACED IN THE CURB TO AVOID THE RAILING ANCHORAGE AND REINFORCING. THE CONTRACTOR SHALL FORM A SLEEVE THROUGH THE ABUTMENTS AS DIRECTED BY THE RESIDENT ENGINEER. A FLEXIBLE COUPLING THAT ALLOWS FOR THE FREE EXPANSION JOINT AT ABUTMENT 2 SHALL ALSO BE PROVIDED AS APPROVED BY THE RESIDENT ENGINEER.

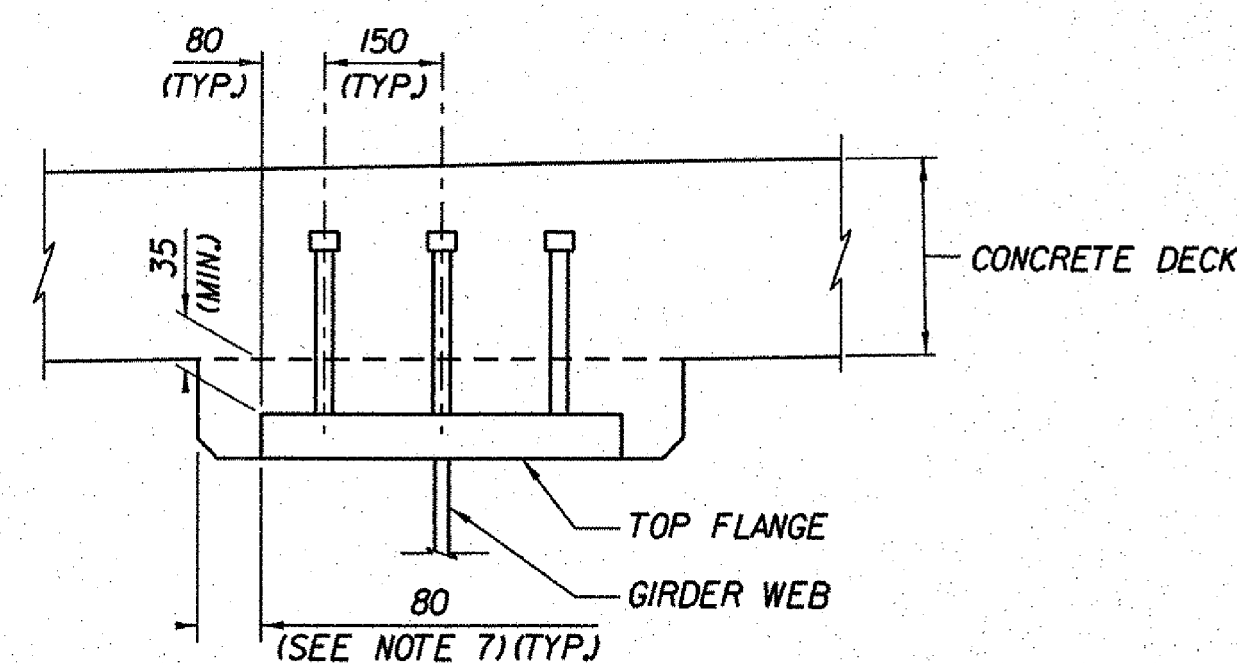


TRANSVERSE SECTION
SCALE: 1:25

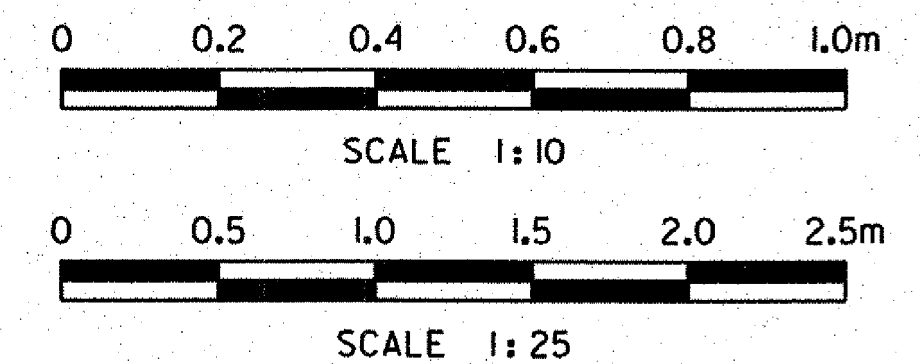
NOTE:
X SPACING IS MEASURED RADIAL TO GIRDERS.
ALL OTHER DIMENSIONS ARE MEASURED WITH RESPECT TO CENTER LINE OF CONSTRUCTION.



FASCIA DETAIL
SCALE: 1:10



TYPICAL GIRDER HAUNCH AND SHEAR CONNECTOR DETAIL
NOT TO SCALE



**STATE OF VERMONT
AGENCY OF TRANSPORTATION**

Town Of	BENNINGTON	Bridge No.	BI55
Highway No.	VT RTE 279	Log Sta.	
		Surv. Sta.	
VT ROUTE 279 & RAMPS OVER ROARING BRANCH OF WALLOOMSAC RIVER			
TRANSVERSE SECTION (RAMP A)			
Designed By	J.J. MANUSE	Drawn By	D.W. SHAFFER
Checked By	B.J. CARLSON	Date	06/08
		Bridge Design Supervisor	K.M. WOJTKOWSKI Date 06/08
PROJECT	BENNINGTON	PROJECT NO.	AC NH 019-1(51)
TVGA CAD Drawing No.	RmpATrans.dgn	Date	02/02/2009
Bridge Sheet No.	BR261	Sheet	248 of 367