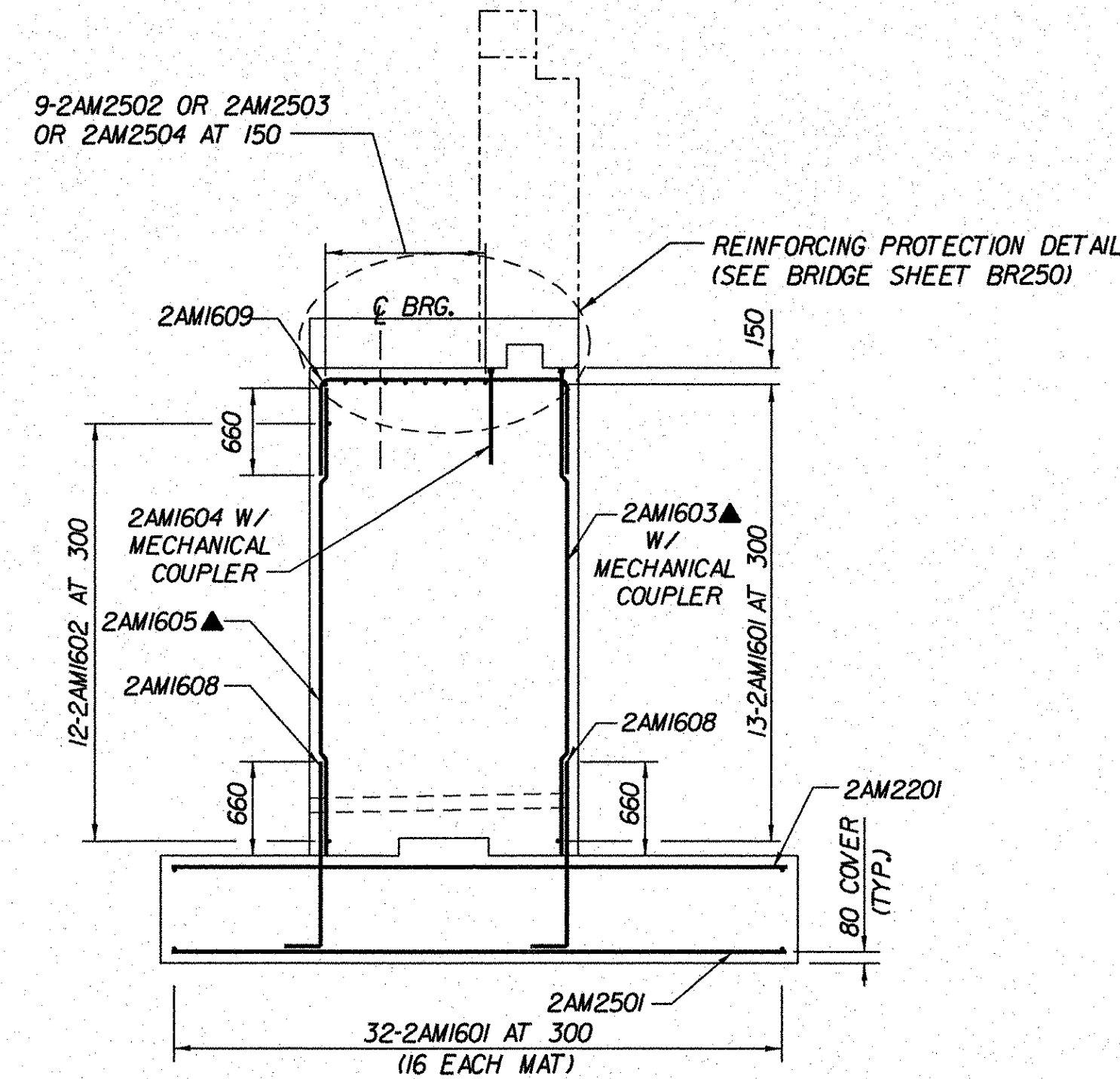
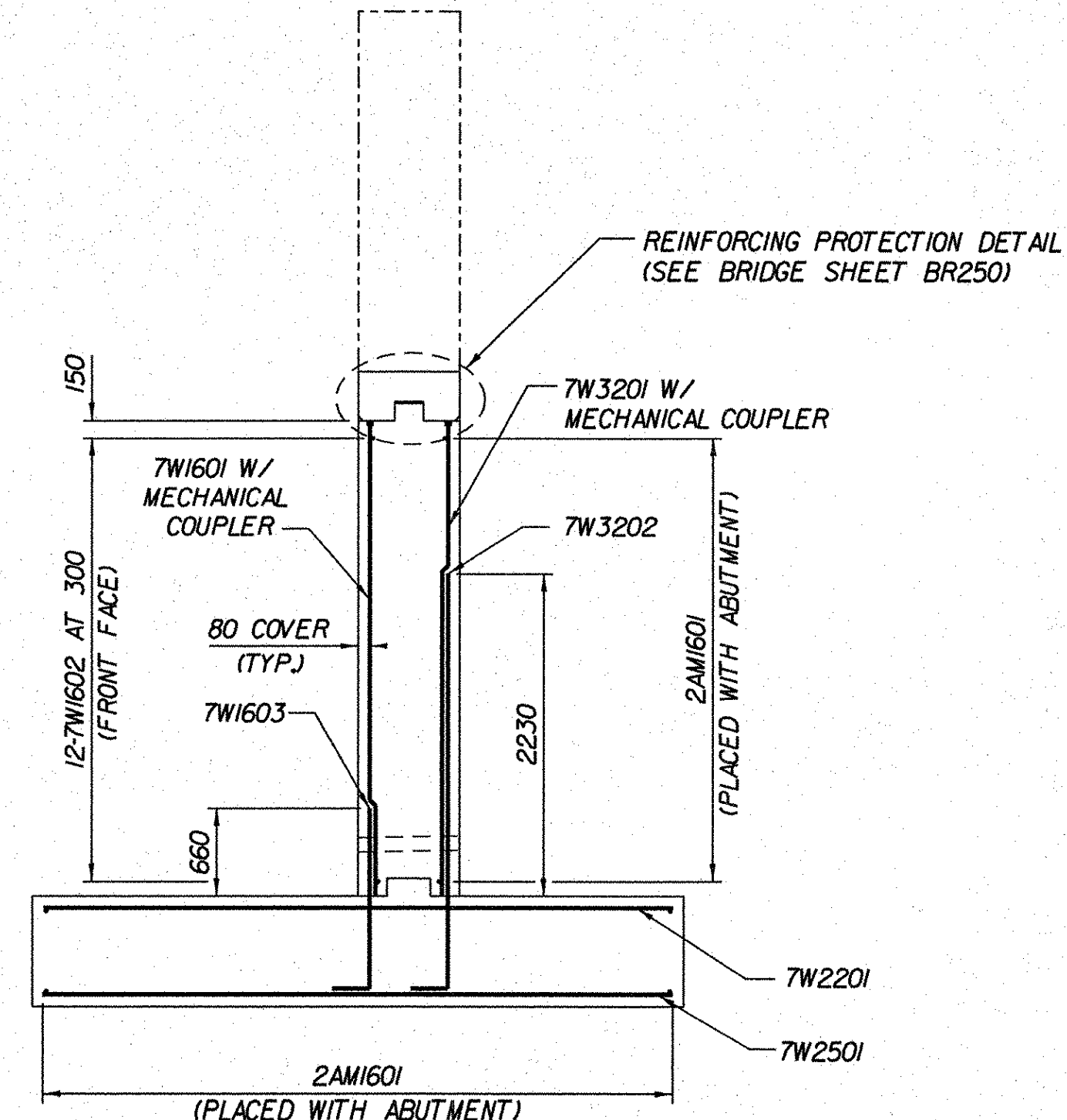


**ELEVATION**  
**(ABUTMENT 2 - VT ROUTE 279 AND WINGWALL NO. 7)**  
SCALE 1:50

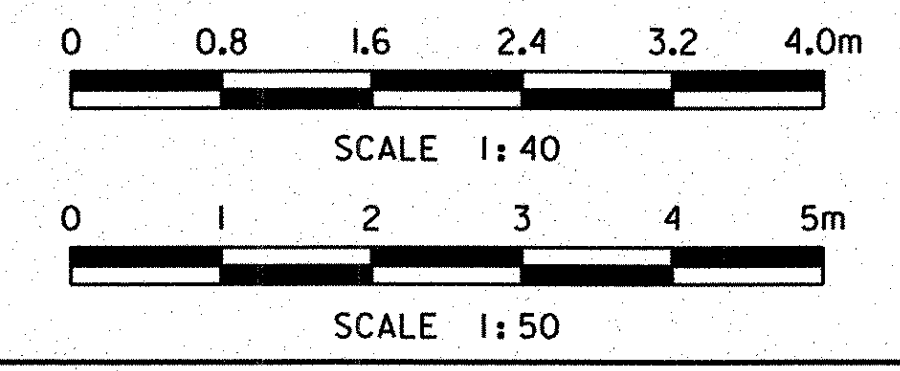


**SECTION A-A**  
**(ABUTMENT 2 - VT ROUTE 279)**  
(SEE BRIDGE SHEET BR252 FOR SECTION LOCATION)  
SCALE 1:40



**SECTION B-B**  
**(WINGWALL NO. 7)**  
(SEE BRIDGE SHEET BR252 FOR SECTION LOCATION)  
SCALE 1:40

**LEGEND:**  
F.F. - FRONT FACE  
B.F. - BACK FACE  
E.F. - EACH FACE  
C.B. - CORNER BAR  
C.J. - CONSTRUCTION JOINT  
▲ - CUT TO FIT IN FIELD



<b>STATE OF VERMONT AGENCY OF TRANSPORTATION</b>			
Town Of	BENNINGTON	Bridge No.	BI5
Highway No.	VT RTE 279	Log Sta.	
		Surv. Sta.	
VT ROUTE 279 & RAMPS OVER ROARING BRANCH OF WALLOOMSAC RIVER			
<b>ABUTMENT 2 REINFORCEMENT DETAILS (VT RTE 279)</b>			
Designed By	B.J. CARLSON	Drawn By	R.G. COCOL
Checked By	Date	Bridge Design Supervisor	
K.M. WOJTKOWSKI	06/08	K.M. WOJTKOWSKI	Date 06/08
PROJECT	BENNINGTON	PROJECT NO.	AC NH 019-1(51)
TVGA CAD Drawing No.	Main2RebDet.dgn	Date	02/02/2009
Bridge Sheet No.	BR253	Sheet	240 of 367