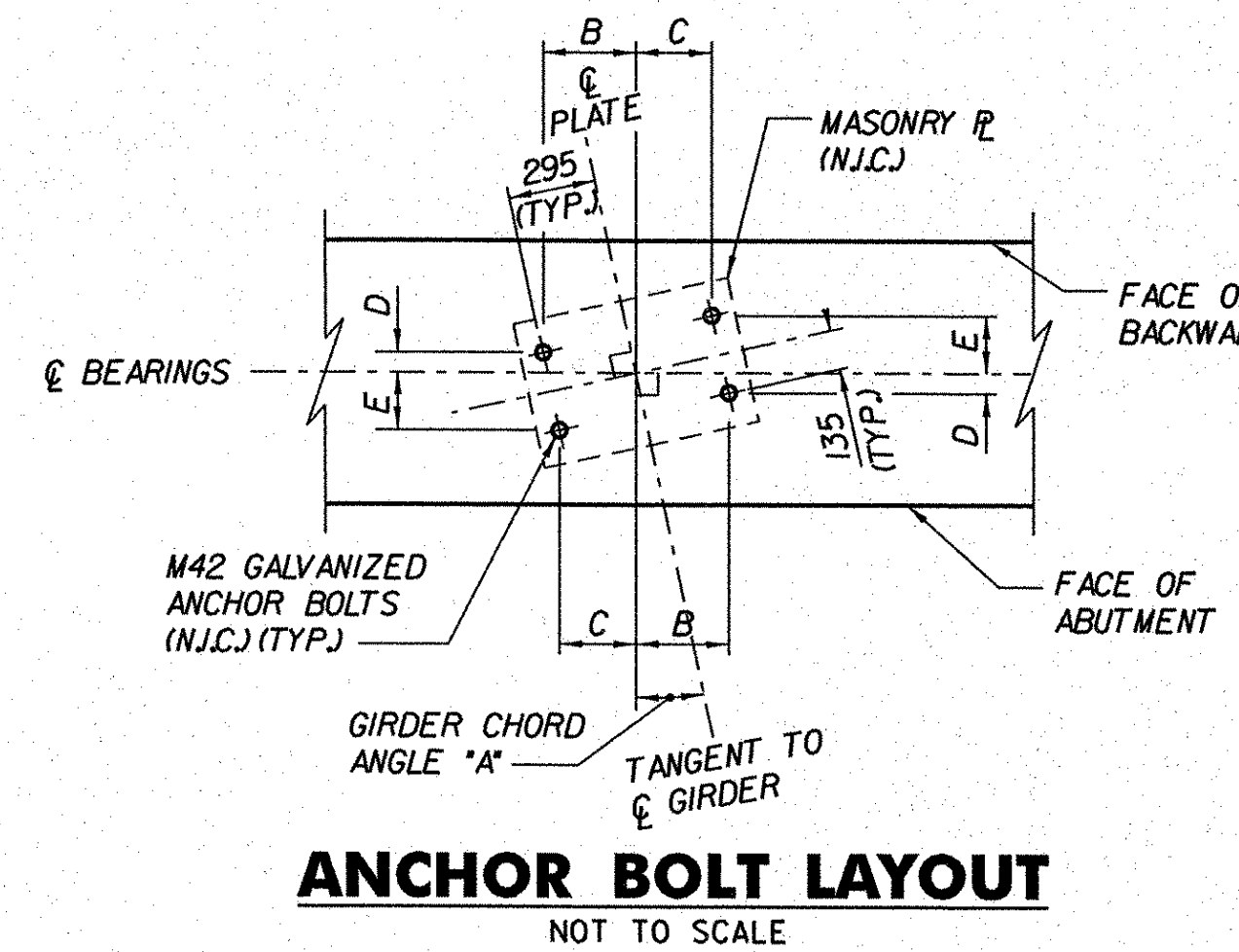
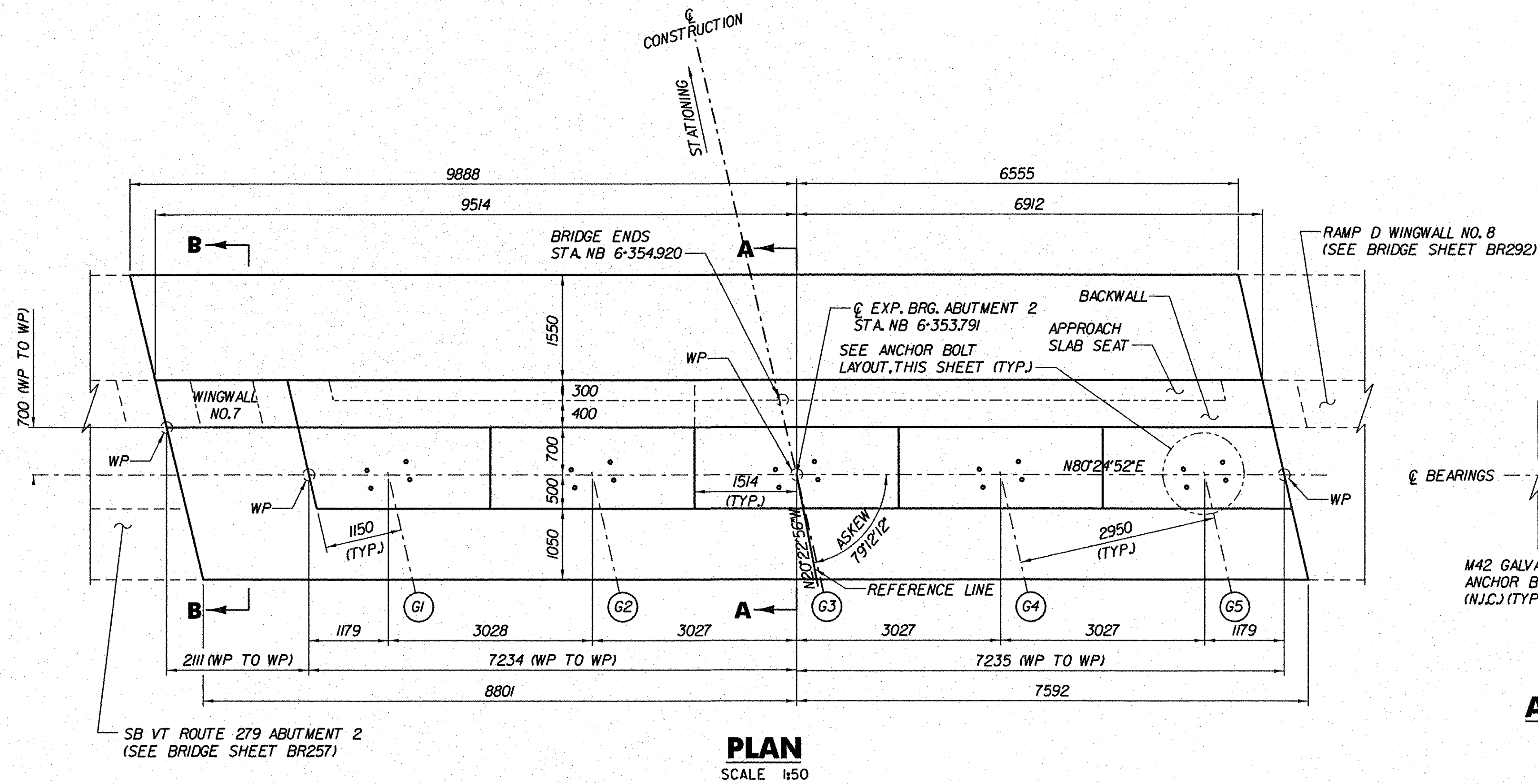
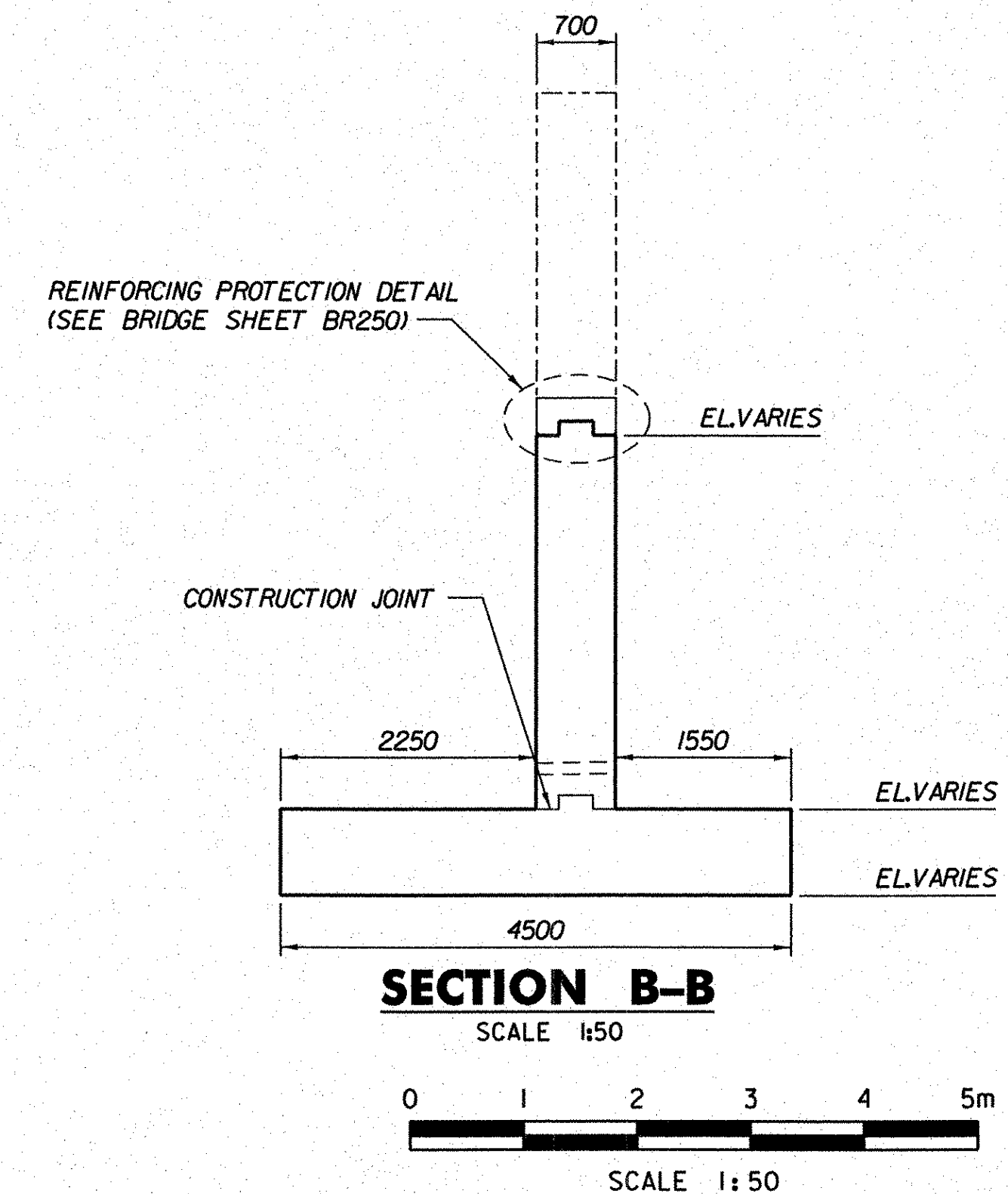
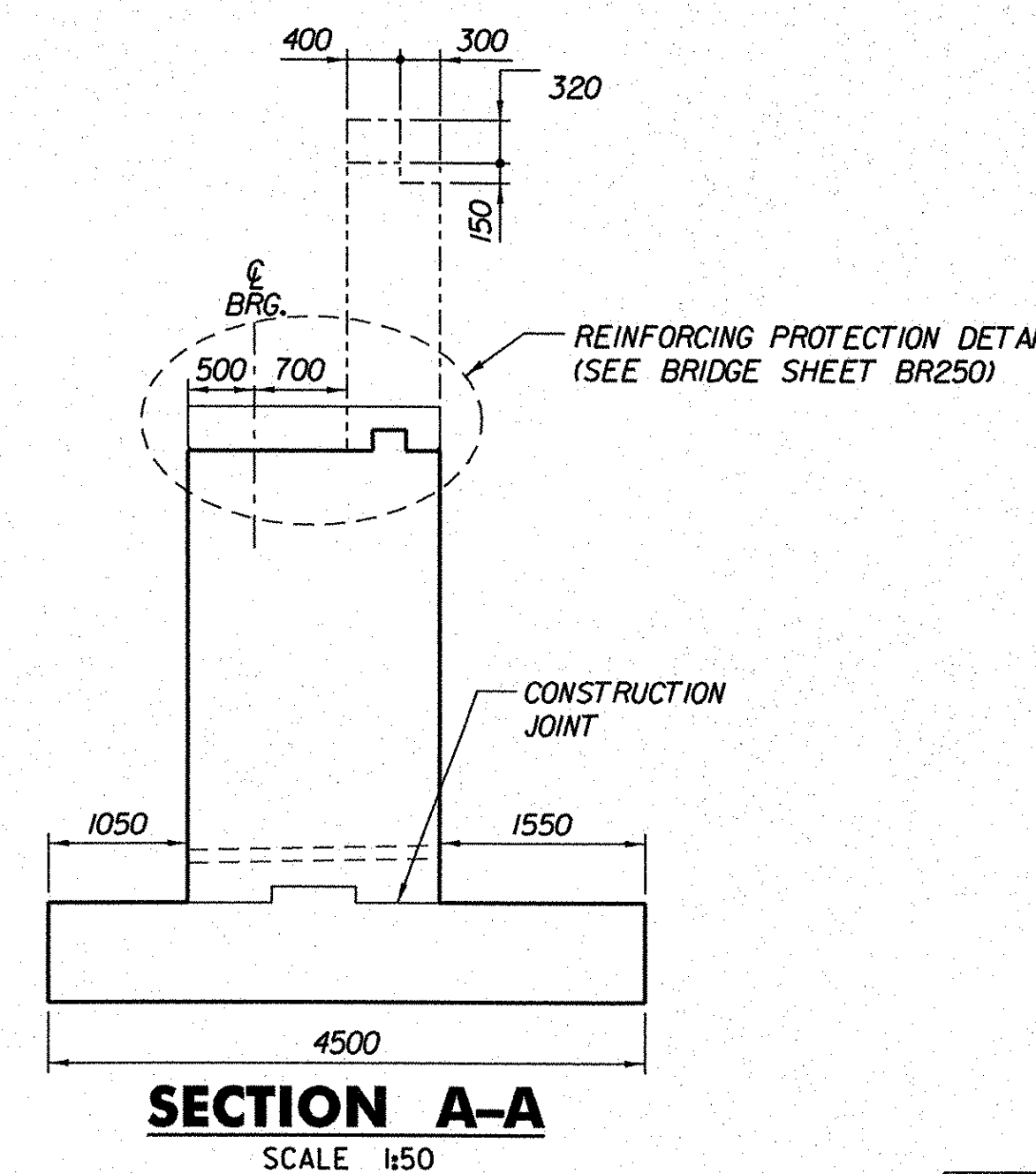
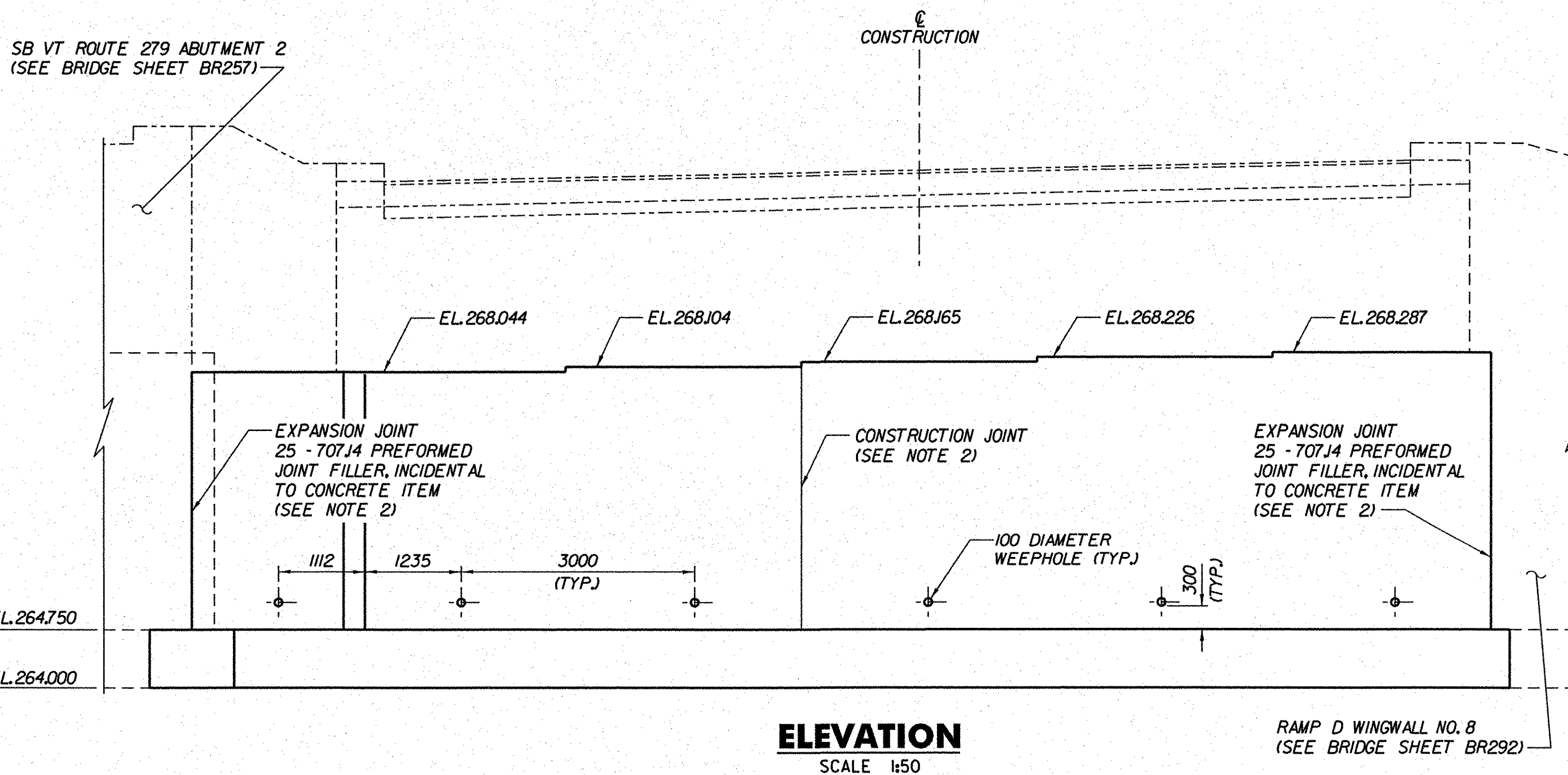


NOTES:

- FOR ADDITIONAL LAYOUT INFORMATION, SEE LAYOUT DIAGRAM (VT ROUTE 279), BRIDGE SHEET BR241.
- FOR THE TYPICAL CONCRETE CONSTRUCTION JOINT AND EXPANSION JOINT DETAILS, SEE TYPICAL BRIDGE DETAILS, BRIDGE SHEET BR309.
- *GIRDER CHORD* IS DEFINED ALONG THE DIRECTION OF EXPANSION BETWEEN THE CENTERLINE OF BEARING AT ABUTMENT 1 AND THE CENTERLINE OF BEARING AT ABUTMENT 2, AS SHOWN ON BRIDGE SHEET BR304, BEARING ALIGNMENT DIAGRAMS. THE CENTERLINE OF THE MASONRY PLATE SHALL BE INSTALLED ALONG THE GIRDER CHORD.
- USING THE GIVEN ANCHOR BOLT LAYOUT AS A TEMPLATE, THE LONGITUDINAL AND TRANSVERSE BRIDGE SEAT REINFORCING SPACING SHALL BE MODIFIED AS NECESSARY TO ASSURE THAT THERE WILL BE NO CONFLICT WITH THE FUTURE BEARING DEVICE ANCHOR BOLTS.



ANCHOR BOLT TABLE					
LOCATION	GIRDER CHORD ANGLE "A"	OFFSET B	OFFSET C	OFFSET D	OFFSET E
G1	11°59'29"	317	261	71	193
G2	10°48'49"	315	264	77	188
G3	10°47'48"	315	264	77	188
G4	10°46'47"	315	265	77	188
G5	9°35'33"	313	268	84	182



**STATE OF VERMONT
AGENCY OF TRANSPORTATION**

Town Of	BENNINGTON	Bridge No.	BI5
Highway No.	VT RTE 279	Log Sta.	
		Surv. Sta.	
VT ROUTE 279 & RAMP OVER ROARING BRANCH OF WALLOOSAC RIVER			
ABUTMENT 2 MASONRY (VT ROUTE 279)			
Designed By	B.J. CARLSON	Drawn By	D.W. SHAFFER
Checked By	K.M. WOJTKOWSKI	Date	05/08
		Bridge Design Supervisor	K.M. WOJTKOWSKI
		Date	05/08
PROJECT	BENNINGTON	PROJECT NO.	AC NH 019-1(51)
TVGA CAD Drawing No.	MainA2Conc.dgn	Date	02/02/2009
Bridge Sheet No.	BR251	Sheet	238 of 367