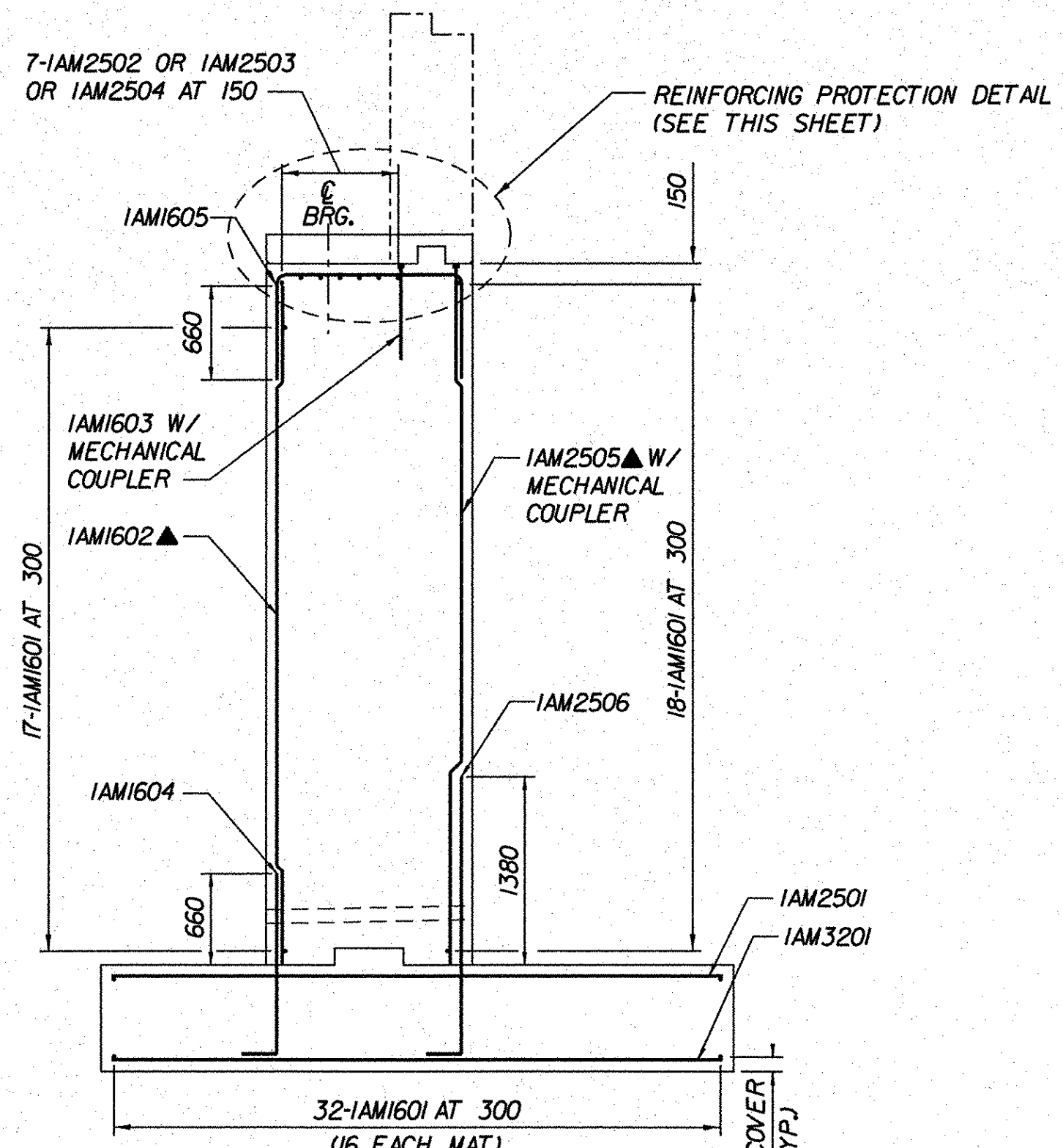


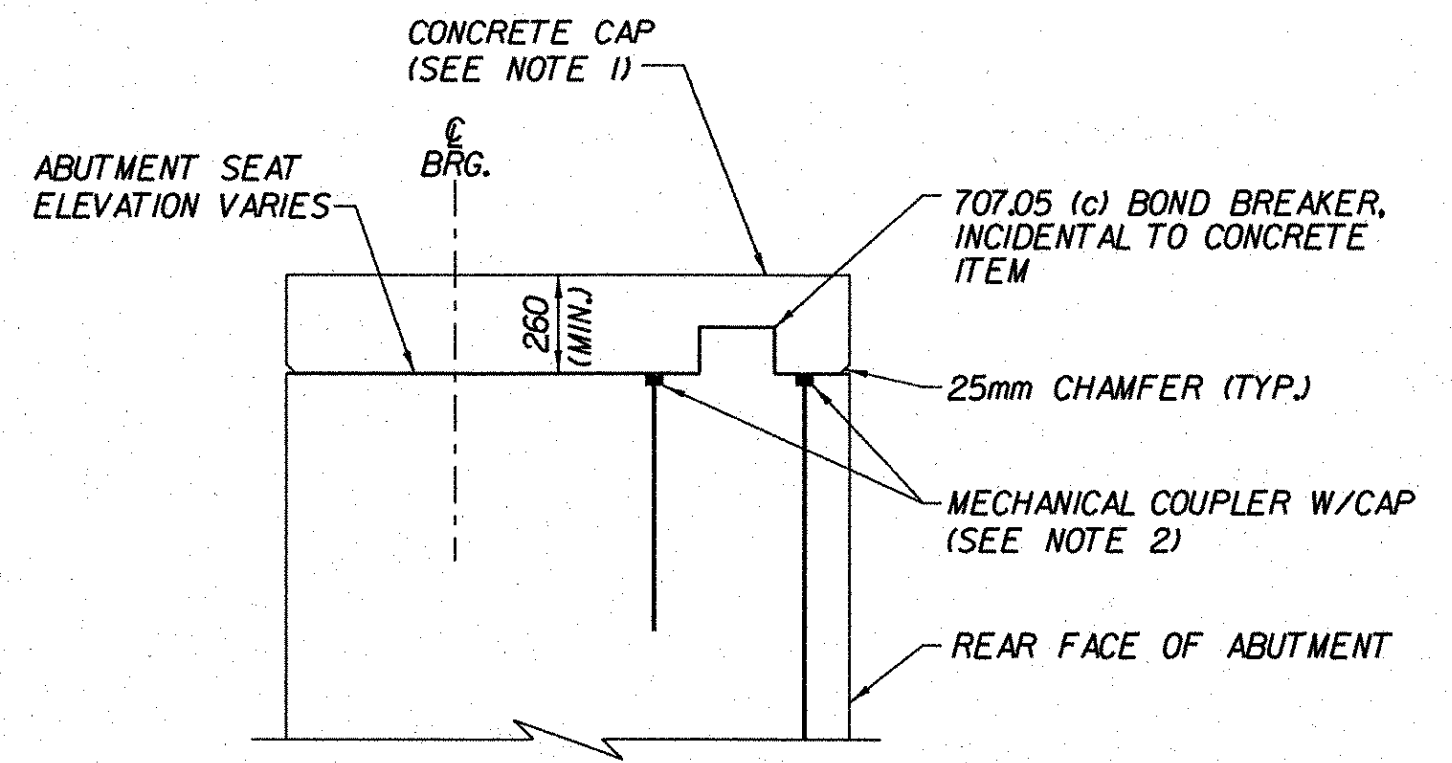
ELEVATION
(ABUTMENT 1 - VT ROUTE 279)
SCALE 1:50

NOTES:

1. THE CONCRETE CAP SHALL BE PLACED IN A SEPARATE POUR FROM THE ABUTMENT OR WINGWALL.
2. THE CONTRACTOR SHALL ENSURE THE OPEN END OF THE MECHANICAL COUPLERS ARE SEALED TO PREVENT CONCRETE INTRUSION BEFORE POURING CONCRETE CAP.
3. REINFORCING PROTECTION DETAIL ASSUMES THREADED MECHANICAL COUPLERS. ALTERNATE DETAILS MAY BE PROPOSED BY THE CONTRACTOR FOR SLEEVE TYPE MECHANICAL COUPLERS SUBJECT TO THE APPROVAL OF THE RESIDENT ENGINEER.



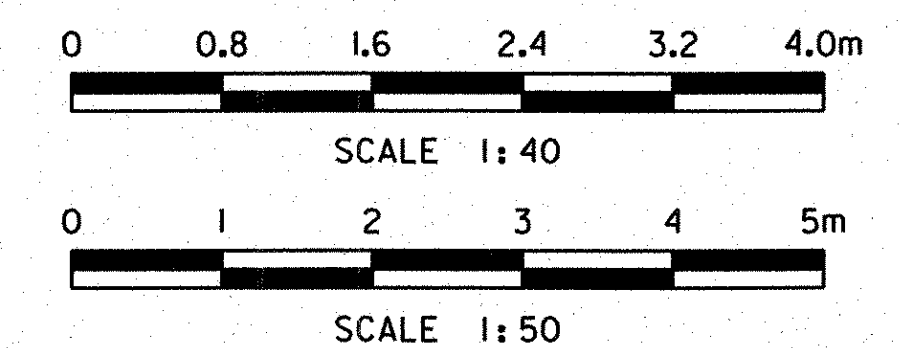
SECTION A-A
(ABUTMENT 1 - VT ROUTE 279)
(SEE BRIDGE SHEET BR249 FOR SECTION LOCATION)
SCALE 1:40



REINFORCING PROTECTION DETAIL
(ABUTMENT SHOWN, WINGWALL SIMILAR)
NOT TO SCALE

LEGEND:

- F.F. - FRONT FACE
- B.F. - BACK FACE
- E.F. - EACH FACE
- C.B. - CORNER BAR
- C.J. - CONSTRUCTION JOINT
- ▲ - CUT TO FIT IN FIELD



STATE OF VERMONT
AGENCY OF TRANSPORTATION

Town Of	BENNINGTON	Bridge No.	BI5
Highway No.	VT RTE 279	Log Sta.	
		Surv. Sta.	
VT ROUTE 279 & RAMPS OVER ROARING BRANCH OF WALLOOMSAC RIVER			
ABUTMENT 1 REINFORCEMENT DETAILS (VT RTE 279)			
Designed By	B.J. CARLSON	Drawn By	R.G. COCOL
Checked By	Date	Bridge Design Supervisor	
K.M. WOJTKOWSKI	06/08	K.M. WOJTKOWSKI	Date 06/08
PROJECT	BENNINGTON	PROJECT NO.	AC NH 019-1(51)
TVGA CAD Drawing No.	MainAlRebDet.dgn	Date	02/02/2009
Bridge Sheet No.	BR250	Sheet	237 of 367