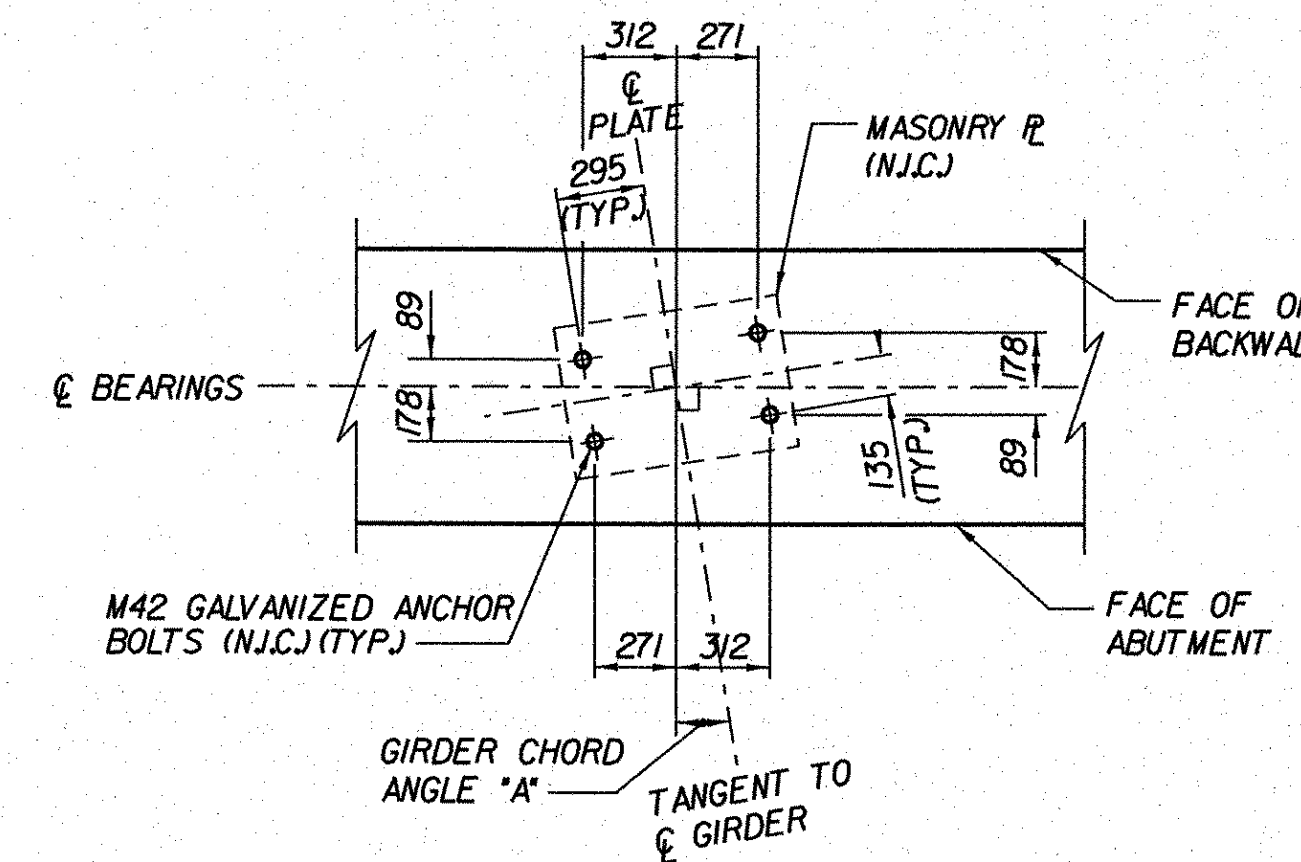
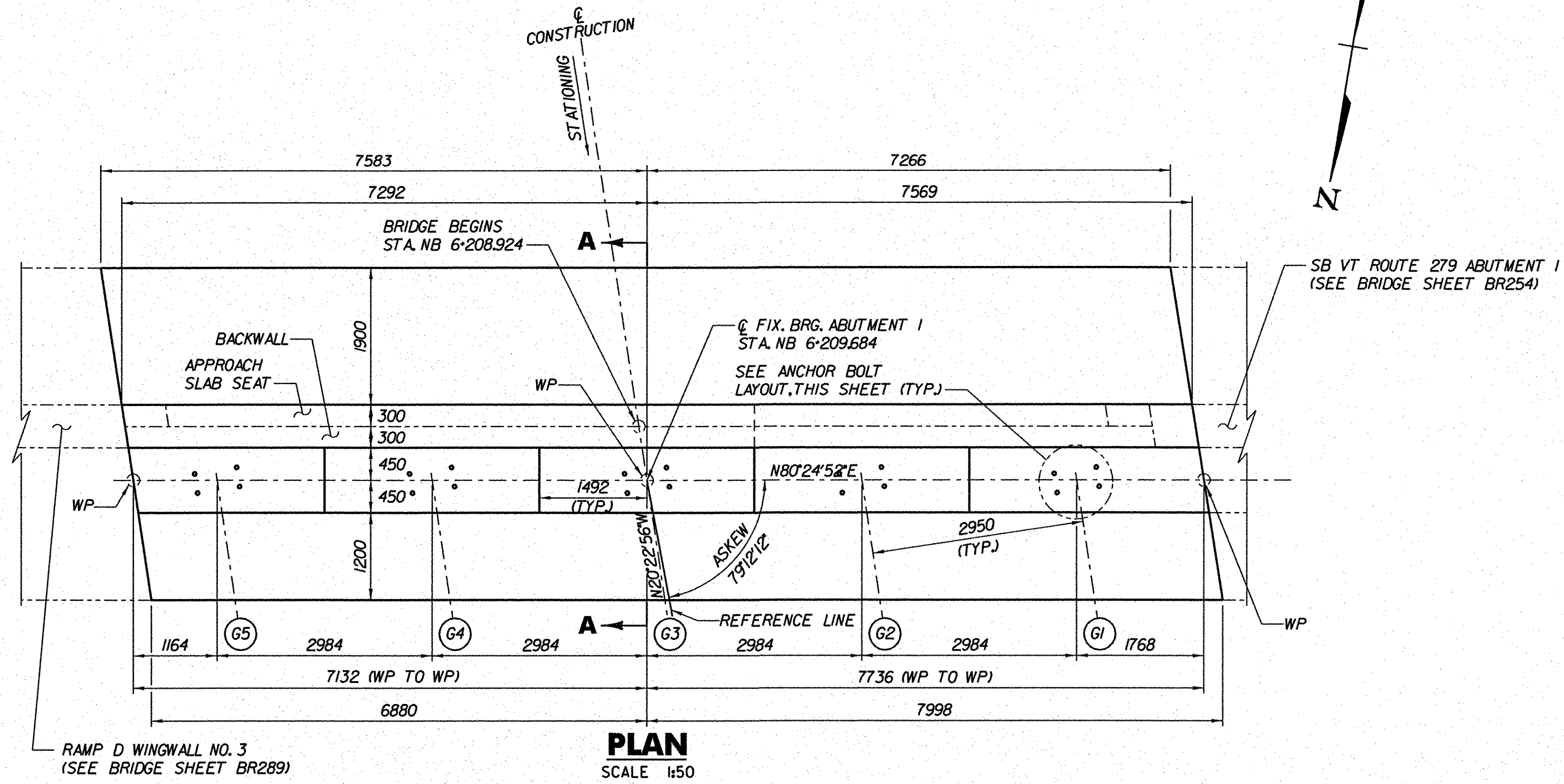


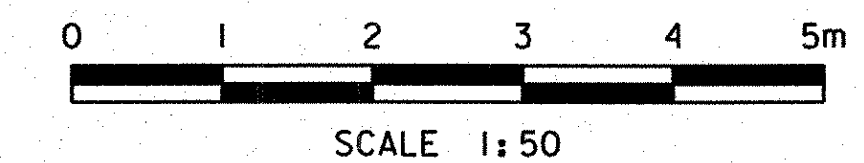
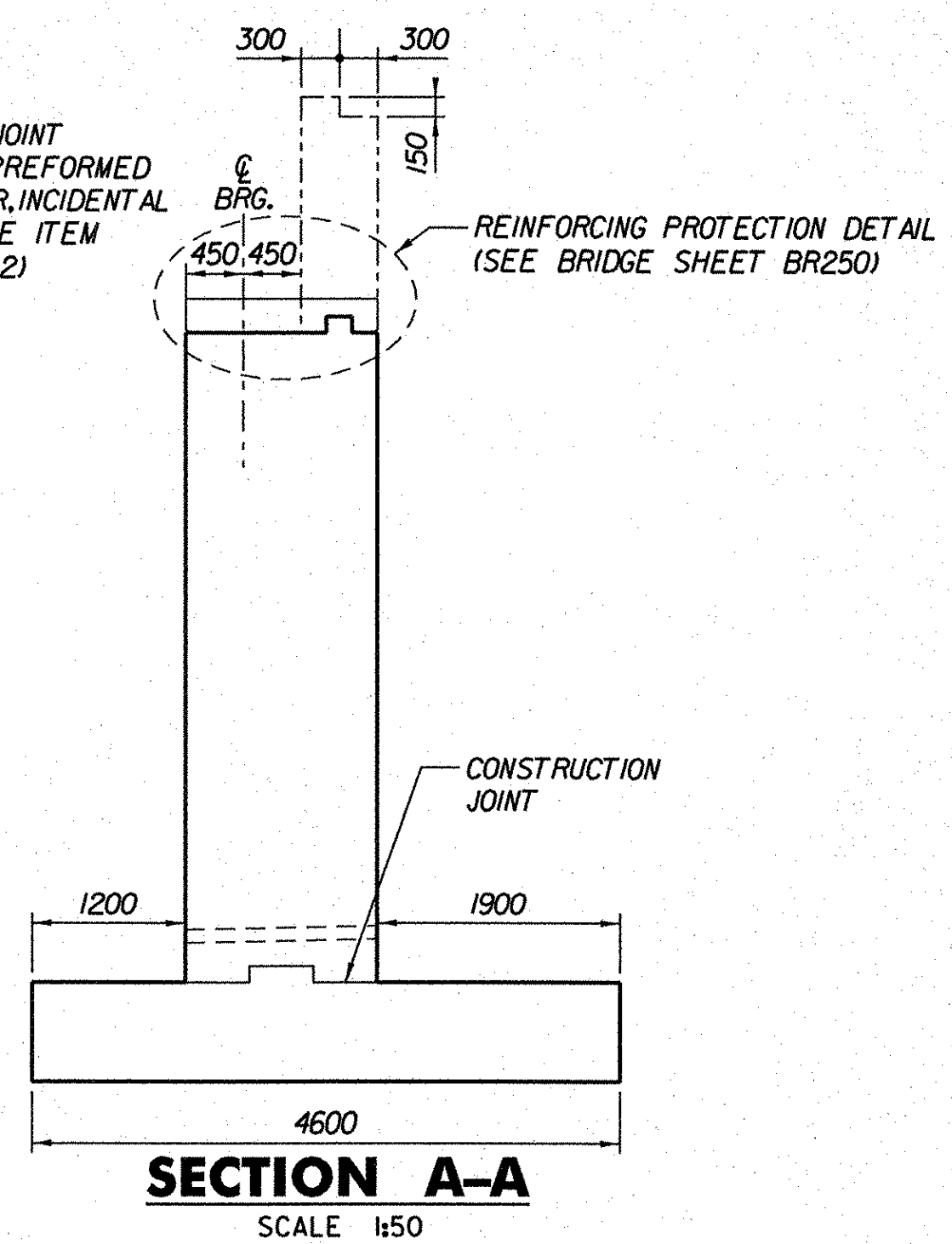
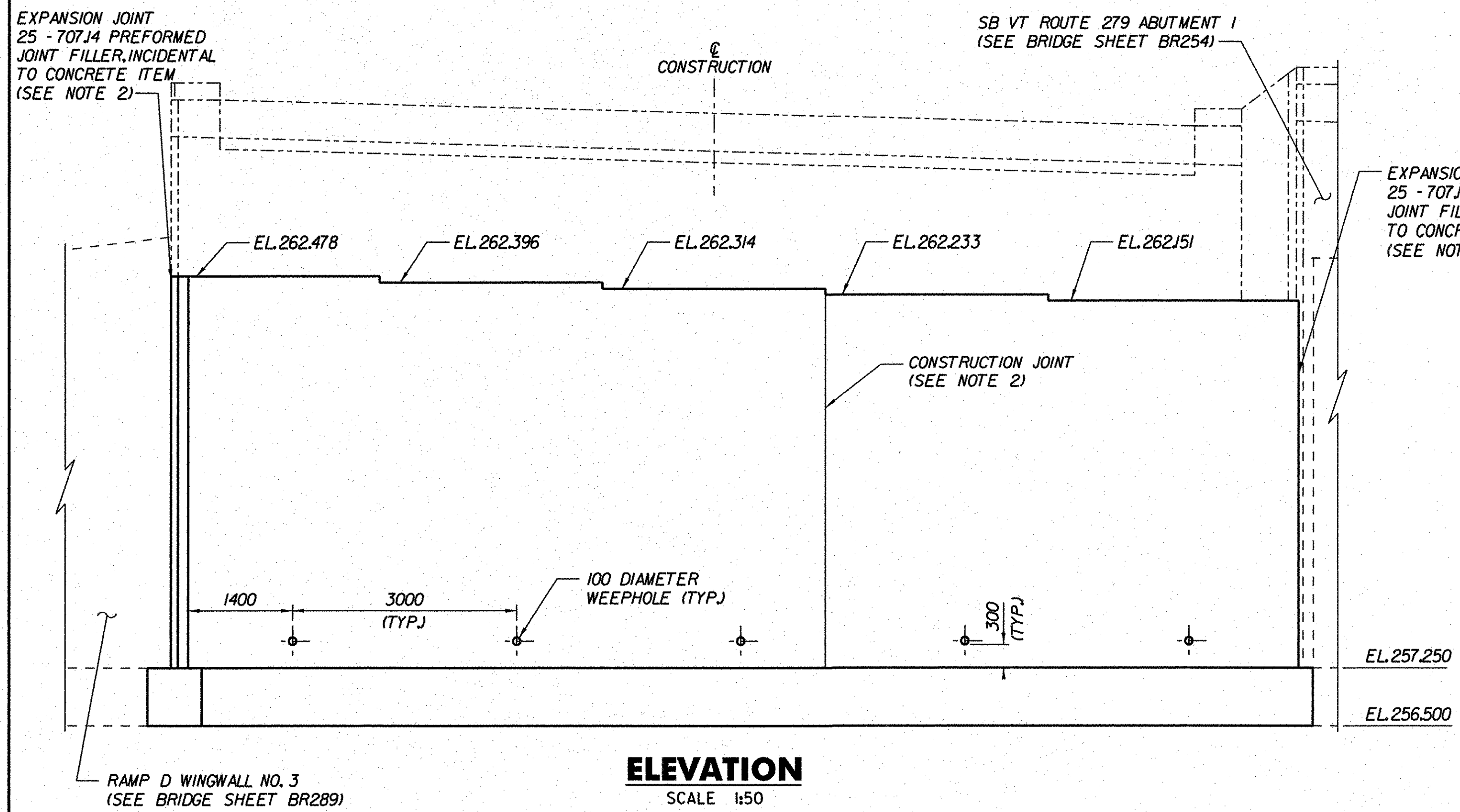
NOTES:

1. FOR ADDITIONAL LAYOUT INFORMATION, SEE LAYOUT DIAGRAM (VT ROUTE 279), BRIDGE SHEET BR241.
2. FOR THE TYPICAL CONCRETE CONSTRUCTION JOINT AND EXPANSION JOINT DETAILS, SEE TYPICAL BRIDGE DETAILS, BRIDGE SHEET BR305.
3. USING THE GIVEN ANCHOR BOLT LAYOUT AS A TEMPLATE, THE LONGITUDINAL AND TRANSVERSE BRIDGE SEAT REINFORCING SPACING SHALL BE MODIFIED AS NECESSARY TO ASSURE THAT THERE WILL BE NO CONFLICT WITH THE FUTURE BEARING DEVICE ANCHOR BOLTS.



GIRDER CHORD ANGLE	
LOCATION	"A"
G1	8° 39' 03"
G2	8° 38' 14"
G3	8° 37' 25"
G4	8° 36' 37"
G5	8° 35' 49"

ANCHOR BOLT LAYOUT
NOT TO SCALE



**STATE OF VERMONT
AGENCY OF TRANSPORTATION**

Town Of	BENNINGTON	Bridge No.	BI5
Highway No.	VT RTE 279	Log Sta.	
		Surv. Sta.	
VT ROUTE 279 & RAMPS OVER ROARING BRANCH OF WALLOMSAC RIVER			
ABUTMENT 1 MASONRY (VT ROUTE 279)			
Designed By	B.J. CARLSON	Drawn By	D.W. SHAFFER
Checked By	K.M. WOJTKOWSKI	Date	05/08
		Bridge Design Supervisor	K.M. WOJTKOWSKI
		Date	05/08
PROJECT	BENNINGTON	PROJECT NO.	AC NH 019-(K51)
TVGA CAD Drawing No.	MainAlConc.dgn	Date	02/02/2009
Bridge Sheet No.	BR248	Sheet	235 of 367