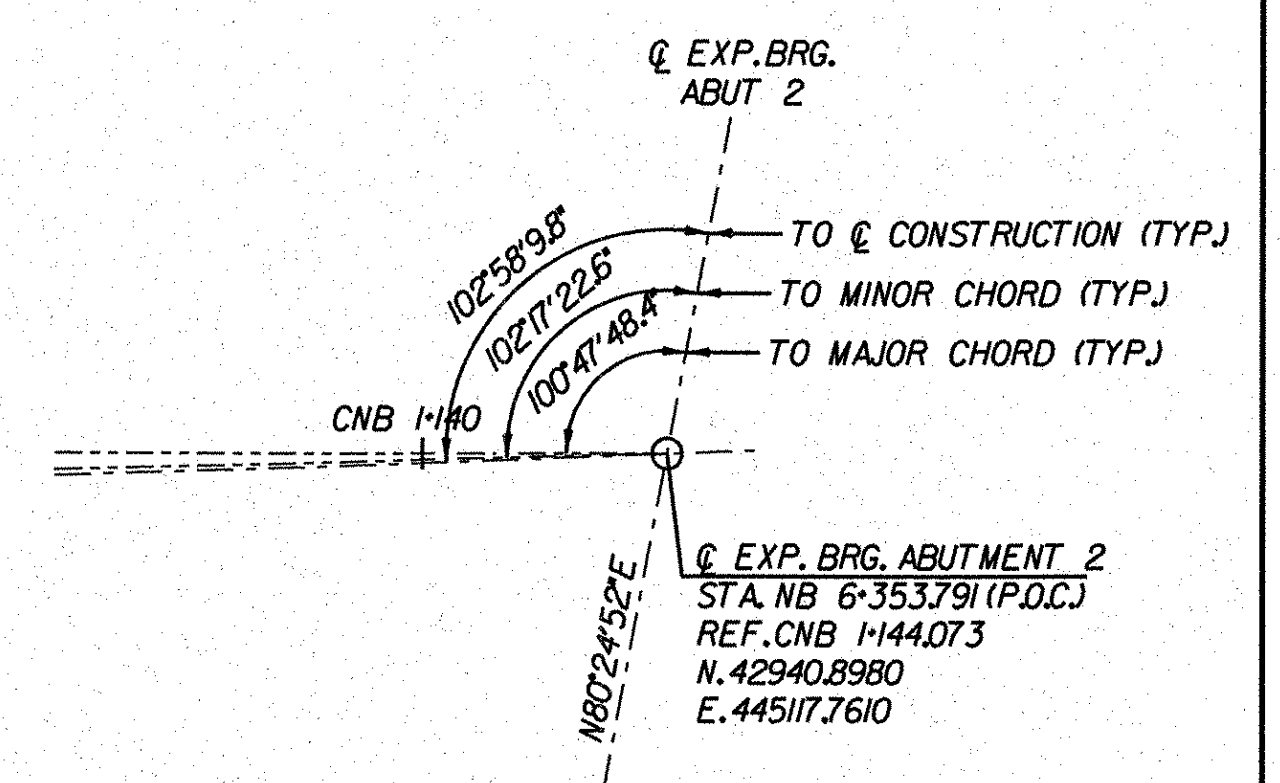
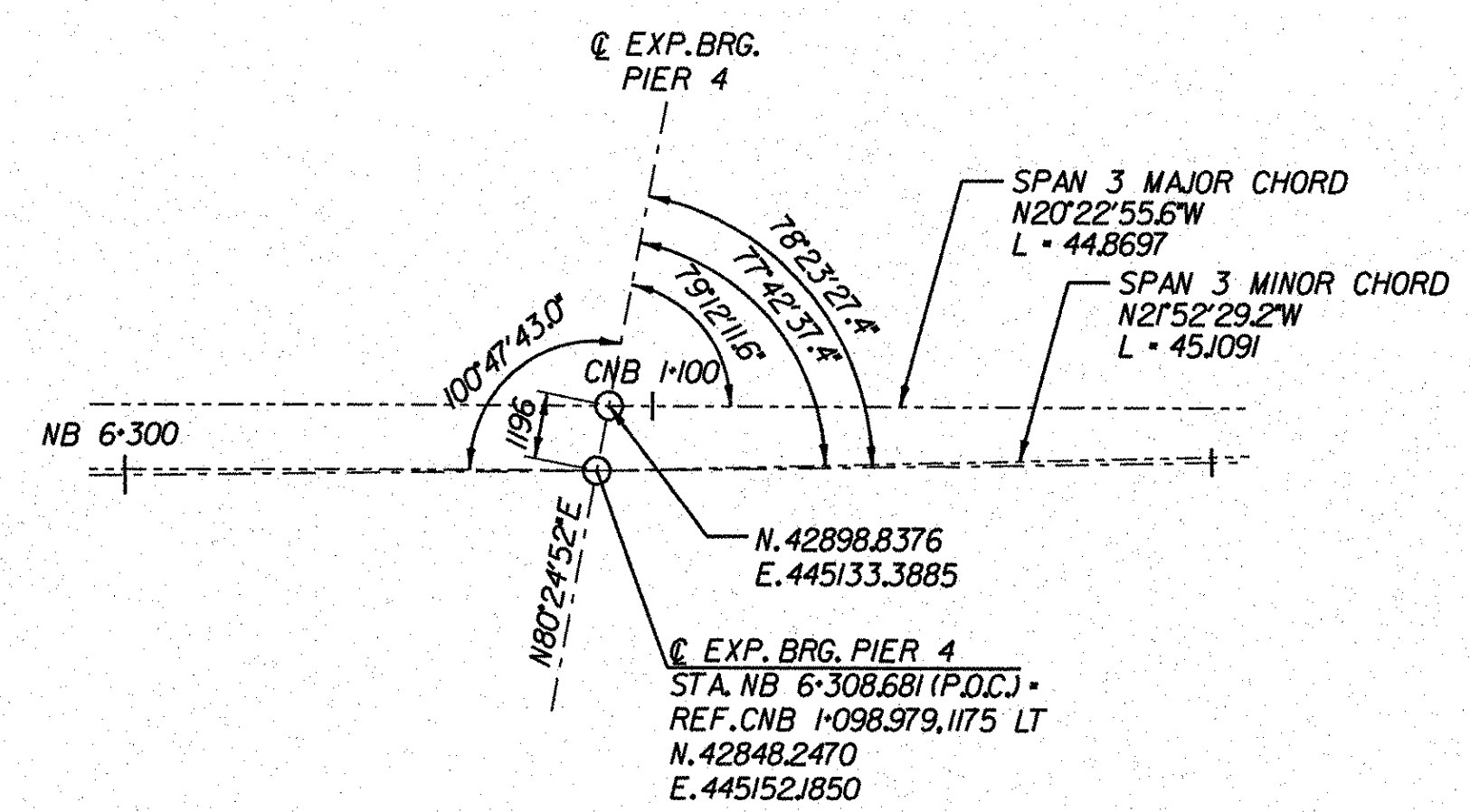
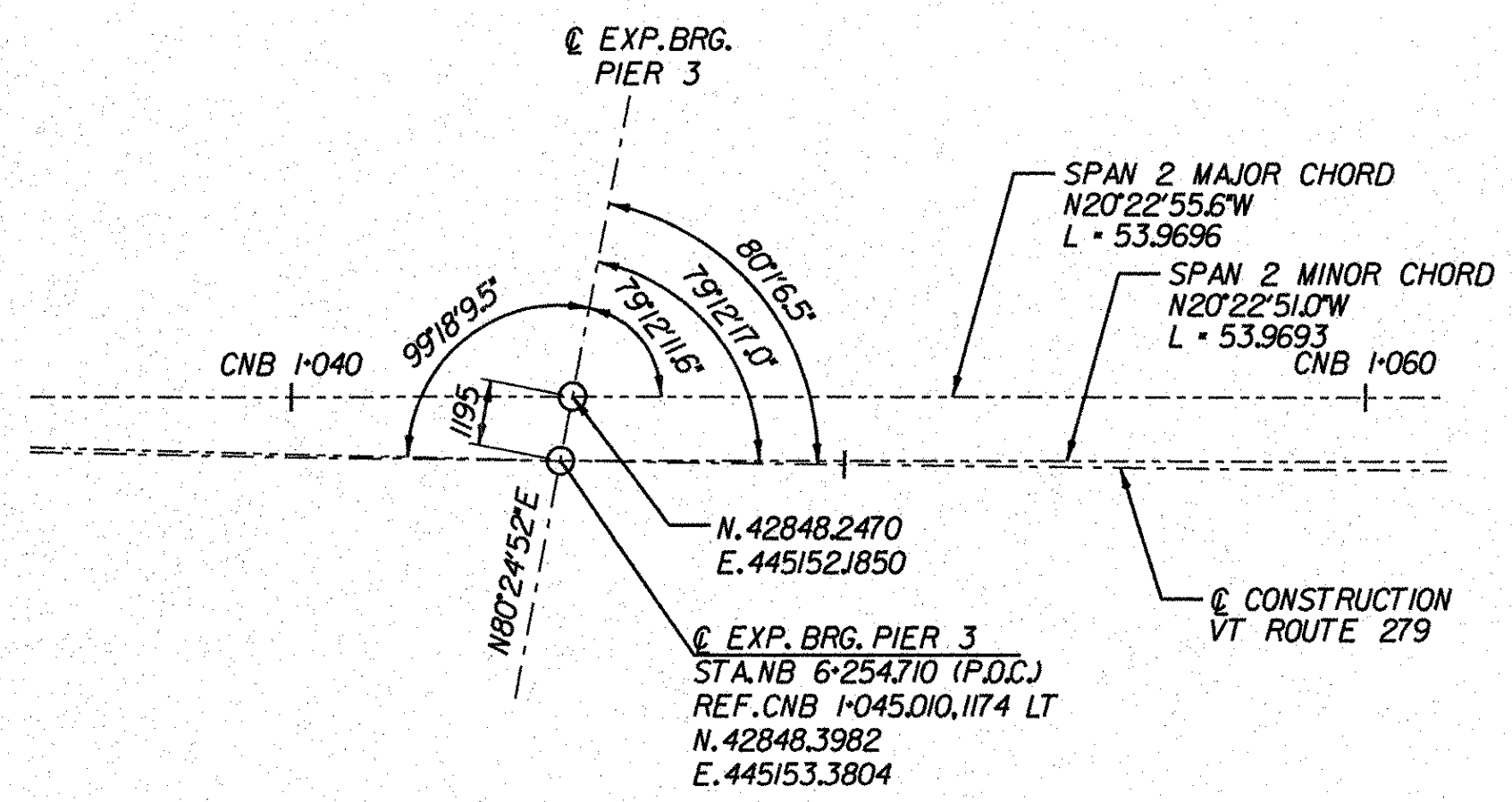
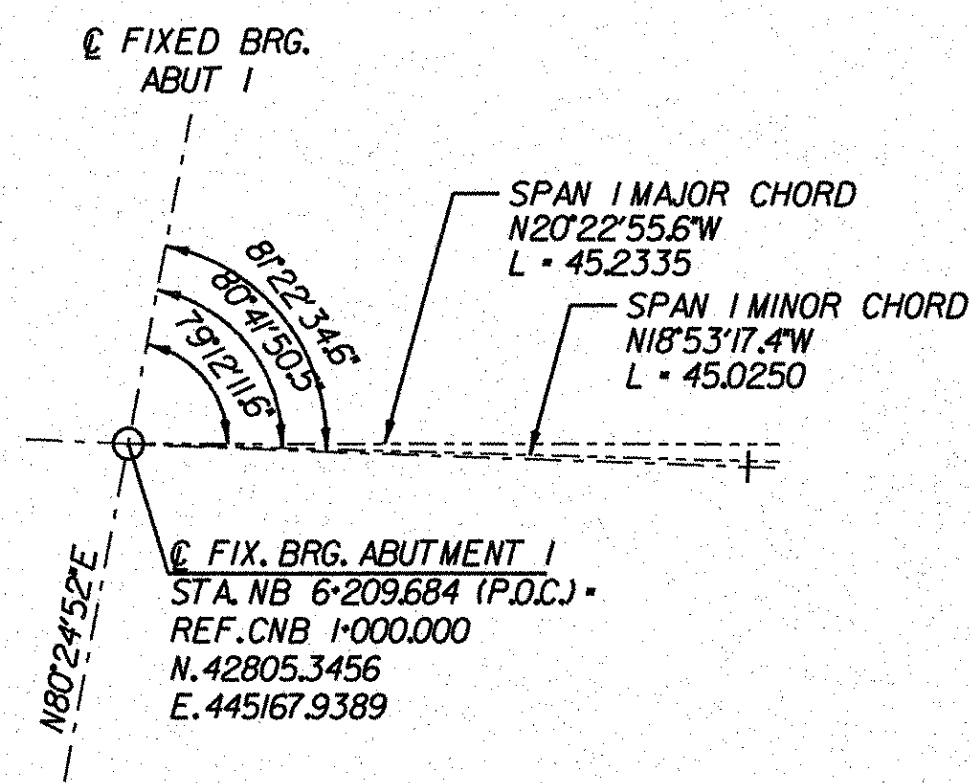


NB CURVE DATA - C CONST.
 Delta = 55°24'30.7"
 R = 1900.000m
 T = 997.703m
 L = 1837.417m
 E = 217.816m



**STATE OF VERMONT
AGENCY OF TRANSPORTATION**

| | | | |
|--|--------------|----------------------------|-----------------|
| Town Of | BENNINGTON | Bridge No. | BI5 |
| Highway No. | VT RTE 279 | Log Sta. | |
| | | Surv. Sta. | |
| VT ROUTE 279 & RAMPS OVER ROARING BRANCH OF WALLOOMSAC RIVER | | | |
| LAYOUT DIAGRAM (VT ROUTE 279) | | | |
| Designed By | J.J. MANUSE | Drawn By | D.S. URBINO |
| Checked By | Date | Bridge Design Supervisor | |
| B.J. CARLSON | 05/08 | K.M. WOJTKOWSKI Date 05/08 | |
| PROJECT | BENNINGTON | PROJECT NO. | AC NH 019-1(51) |
| TVGA CAD Drawing No. | MainFrm2.dgn | Date | 02/02/2009 |
| Bridge Sheet No. | BR247 | Sheet | 234 of 367 |