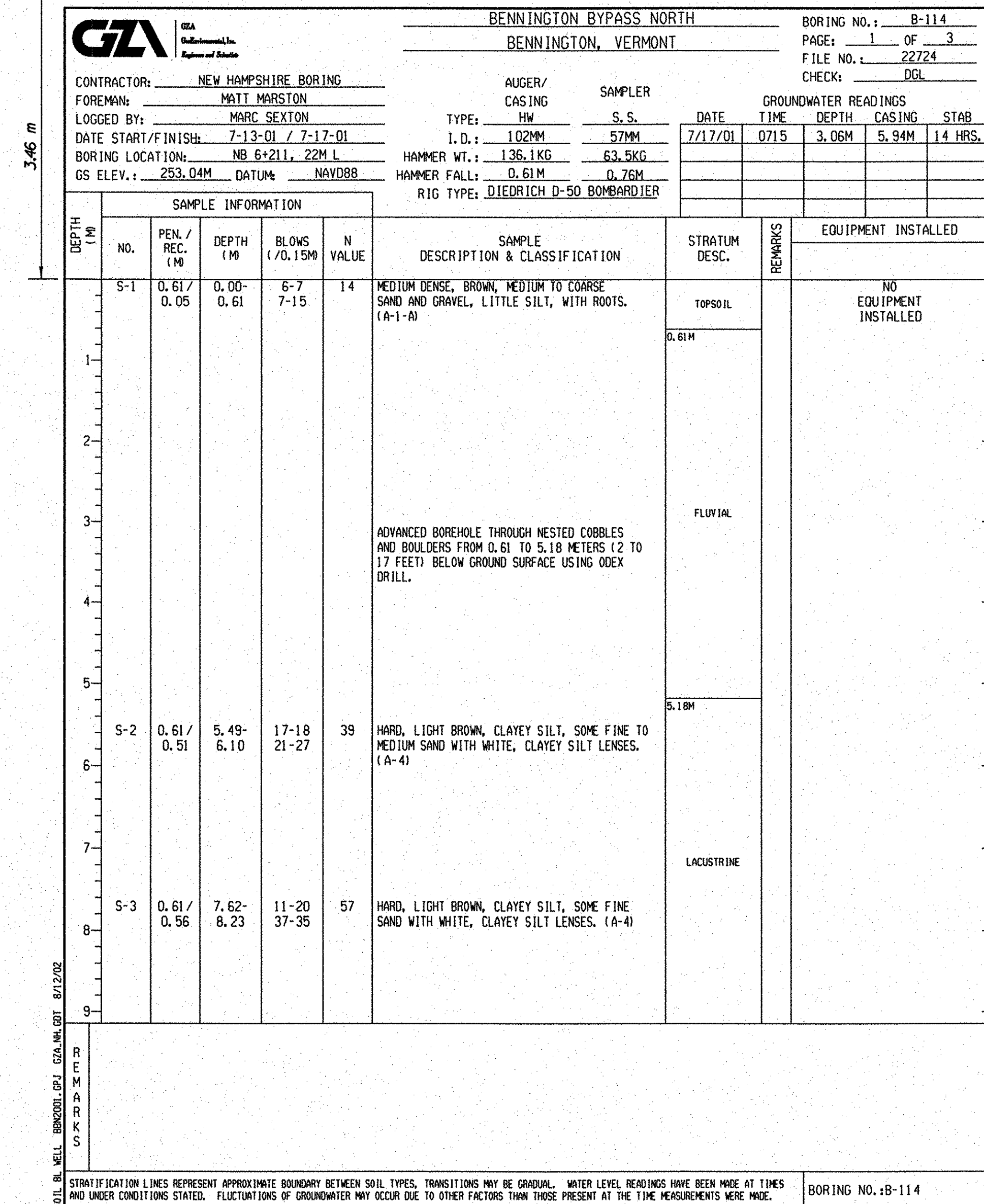
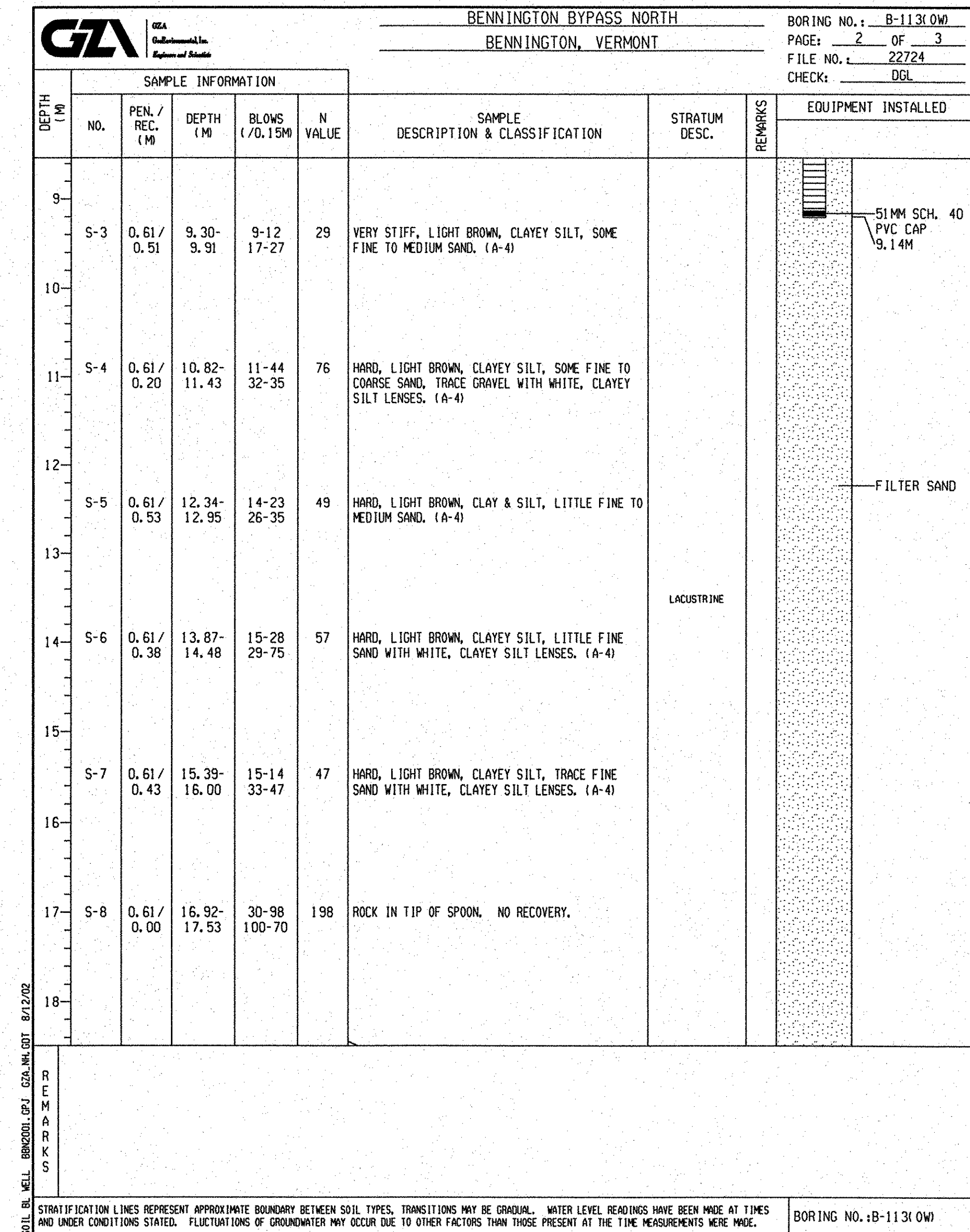
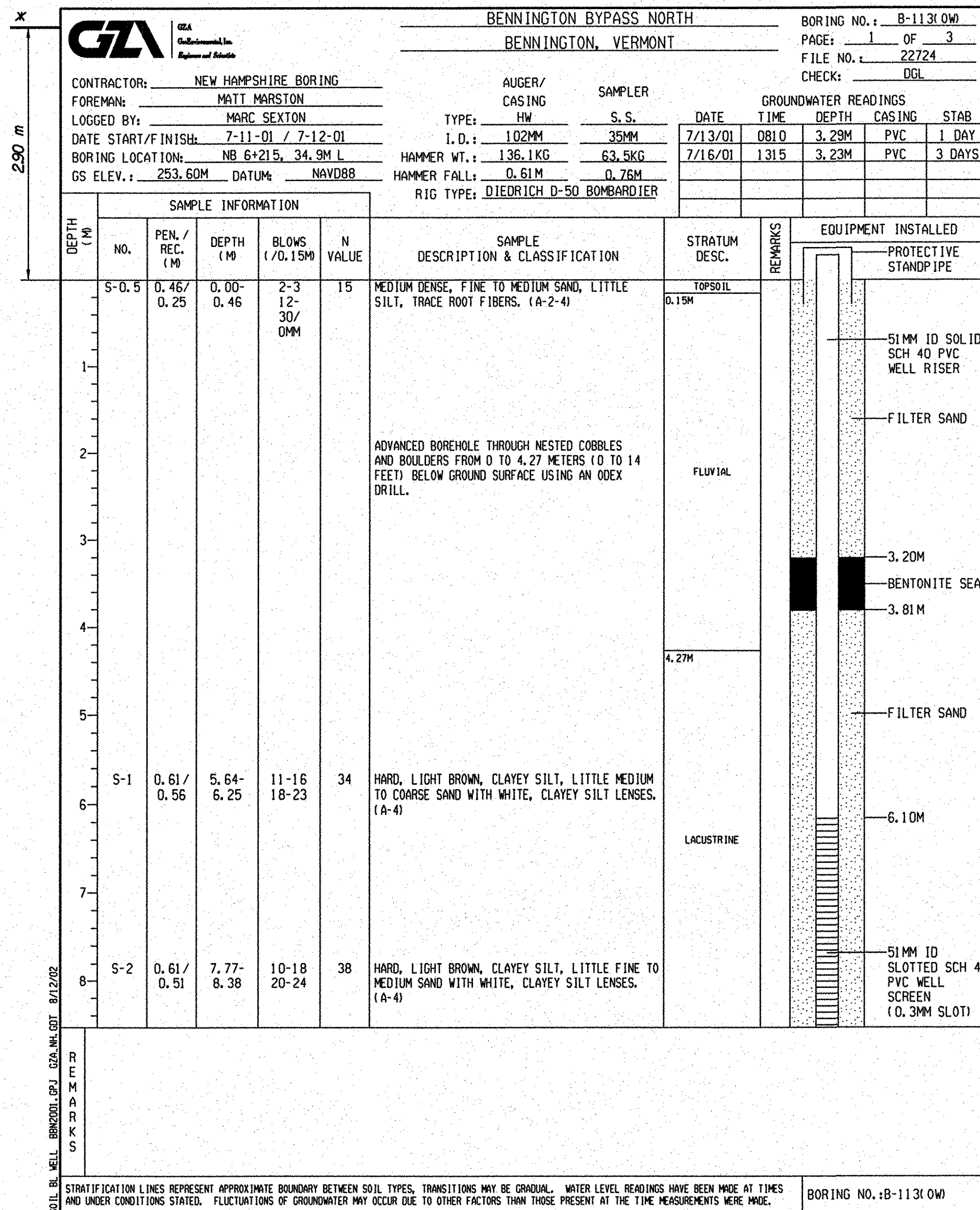


**PARTIAL BORING LOG B113 (OW)**

**PARTIAL BORING LOG B113 (OW) (CONT'D)**

**PARTIAL BORING LOG B114**



\* BOTTOM OF FOOTING, ABUT. I - EL. 256.500

\* BOTTOM OF FOOTING, ABUT. I - EL. 256.500

**STATE OF VERMONT  
AGENCY OF TRANSPORTATION**

Town Of	BENNINGTON	Bridge No.	B15, B15N, B15S
Highway No.	VT RTE 279	Log Sta.	
		Surv. Sta.	
VT ROUTE 279 & RAMPS OVER ROARING BRANCH OF WALLOOSAC RIVER			
<b>BORING LOGS (SHEET 10 OF 33)</b>			
Designed By	GZA	Drawn By	L.R. DELL
Checked By	GZA	Date	04/06
		Bridge Design Supervisor	K.M. WOJTKOWSKI
		Date	04/06
PROJECT	BENNINGTON	PROJECT NO.	AC NH 019-(K5)
TVGA CAD Drawing No.	BL10.dgn	Date	02/02/2009
Bridge Sheet No.	BR216	Sheet	203 of 367

