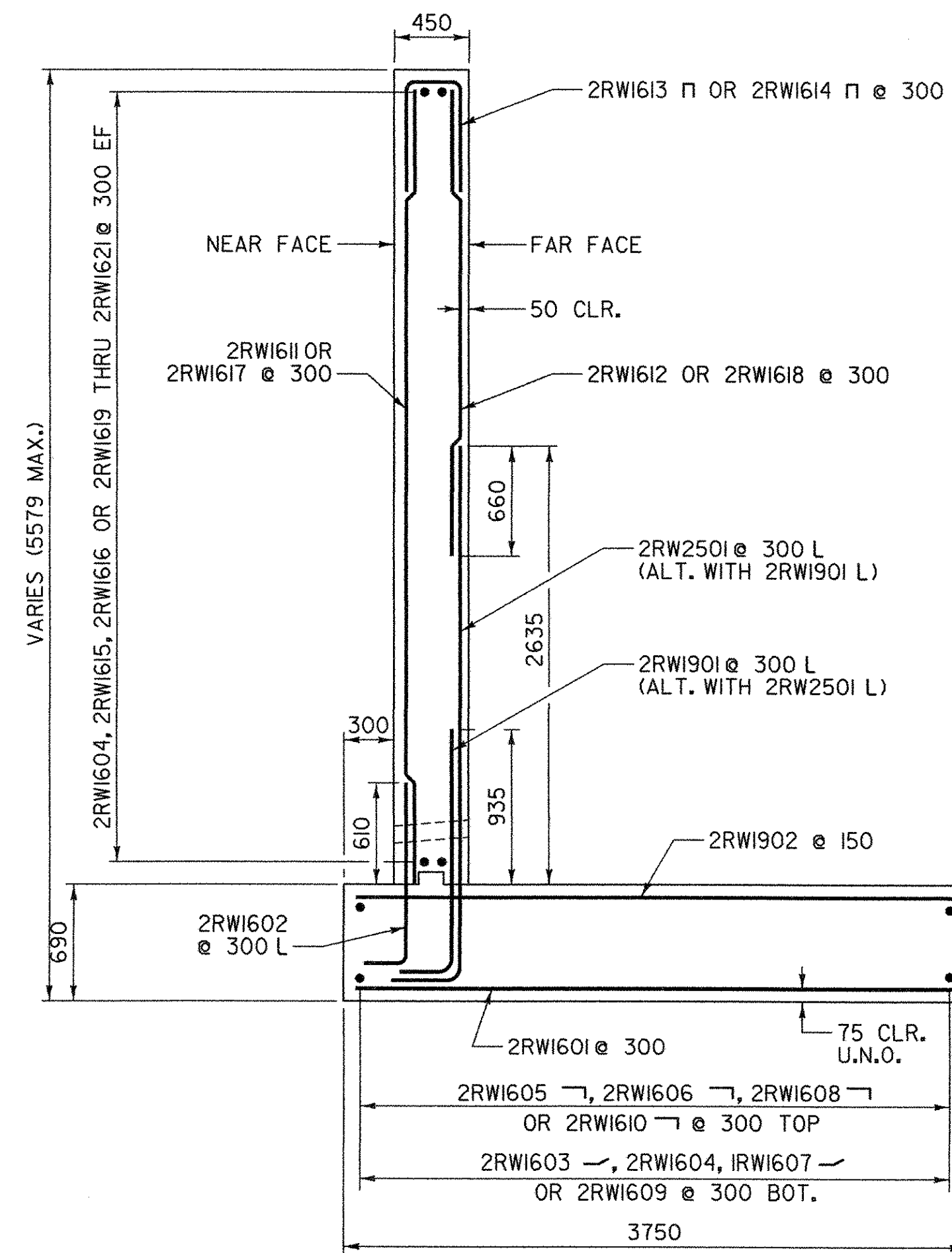
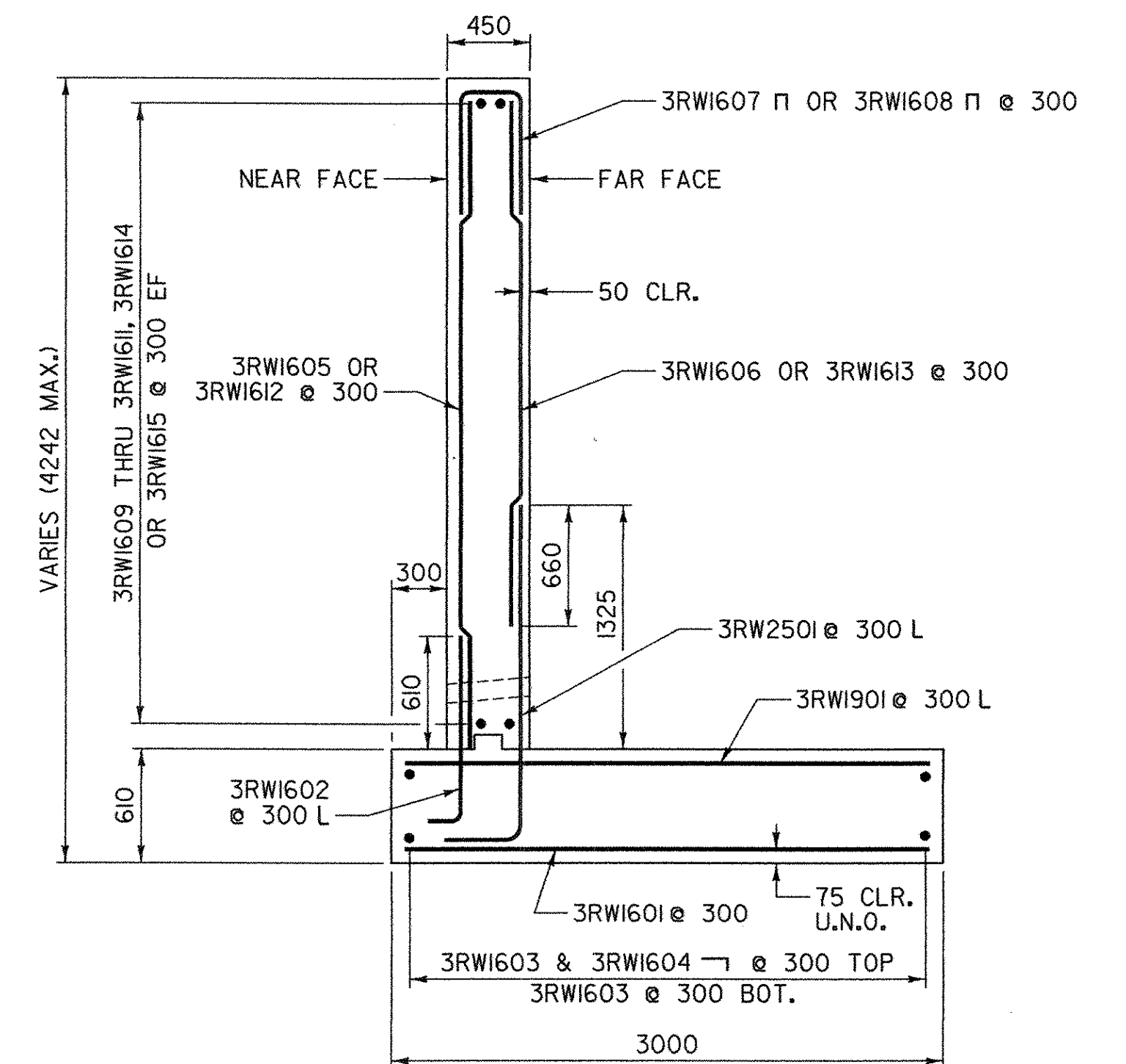


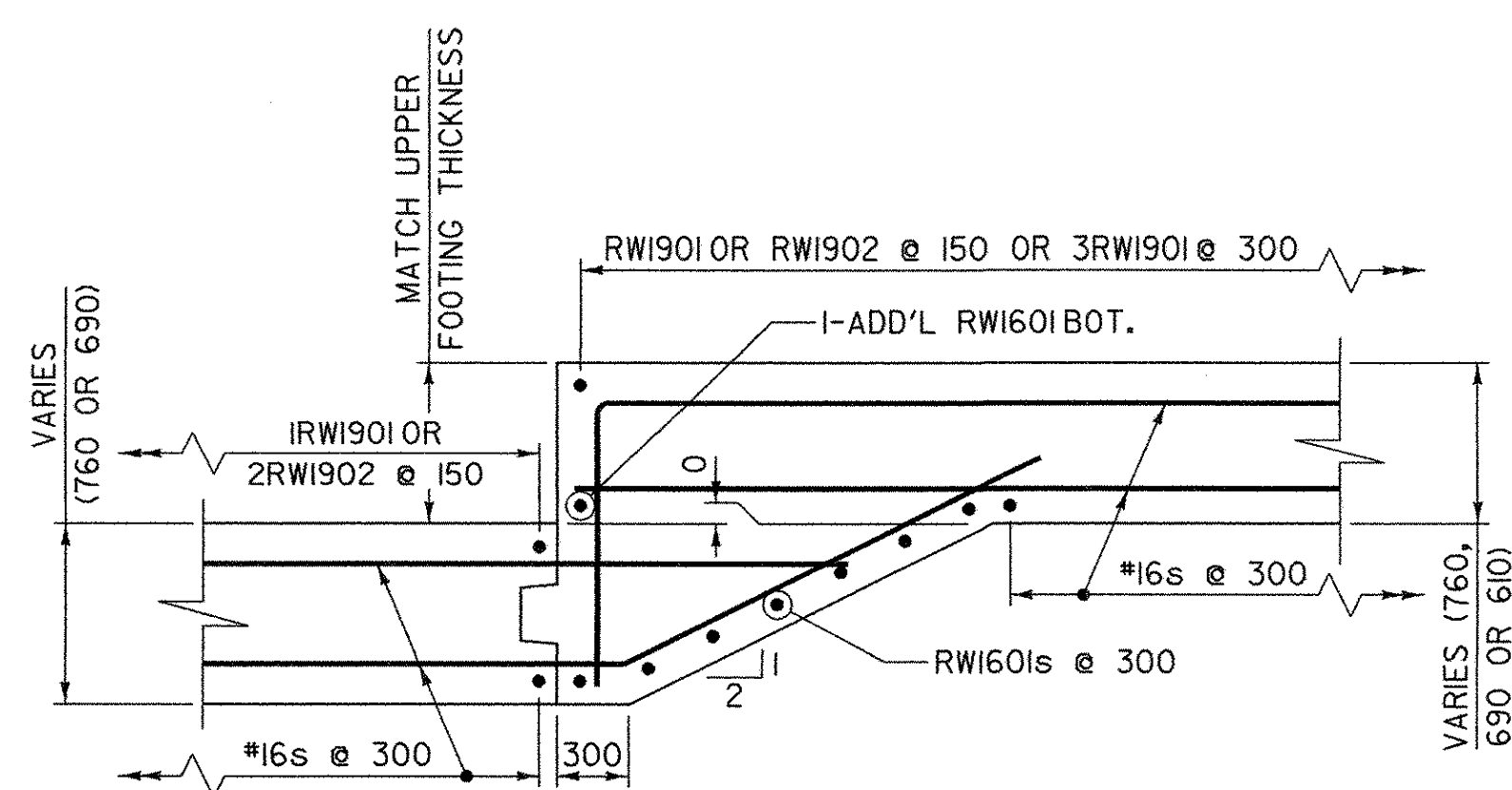
TYPE I RAMP A RETAINING WALL
TYPICAL SECTION
SCALE 1:30



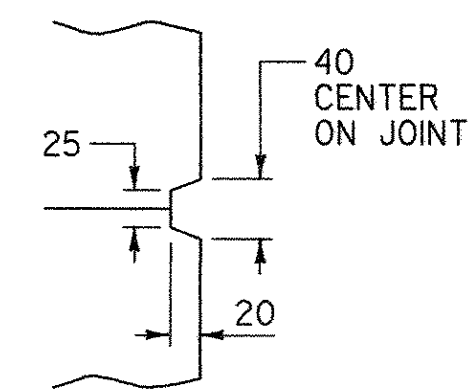
TYPE II RAMP A RETAINING WALL
TYPICAL SECTION
SCALE 1:30



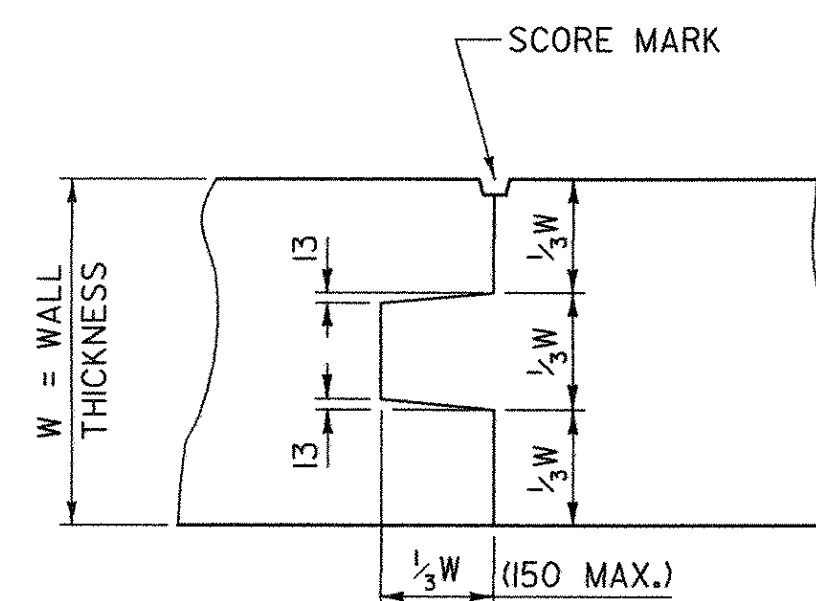
TYPE III RAMP A RETAINING WALL
TYPICAL SECTION
SCALE 1:30



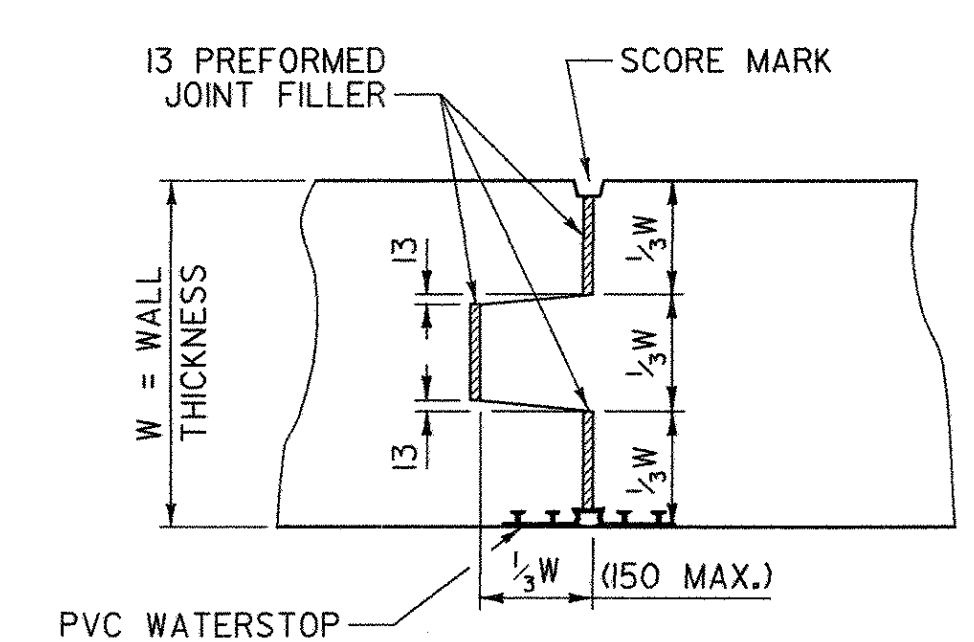
STEP FOOTING DETAIL
SCALE 1:30



SCORE MARK DETAIL
NOT TO SCALE



TYPICAL CONCRETE CONSTRUCTION JOINT
SCALE 1:10



TYPICAL CONCRETE EXPANSION JOINT
SCALE 1:10

NOTE: THE COSTS FOR THE P.V.C. WATERSTOP AND PREFORMED JOINT FILLER SHALL BE INCIDENTAL TO ITEM 501.34. OTHER CONFIGURATIONS OF THE P.V.C. WATERSTOP MAY BE USED UPON APPROVAL OF THE STRUCTURES ENGINEER.

NOTE:

NF = NEAR FACE
FF = FAR FACE
EF = EACH FACE
▲ = CUT TO FIT IN FIELD
75 CLR. UNLESS OTHERWISE SPECIFIED ON THE PLANS.

VERMONT AGENCY OF TRANSPORTATION



PROJECT NAME: BENNINGTON
PROJECT NUMBER: AC NH 019-1(51)
FILE NAME: ...plot files\zd307\cvps.06.pft PLOT DATE: 2/2/2009
DESIGN SUPERVISOR: GREG EDWARDS DRAWN BY: STANTEC
DESIGNED BY: SCOTT BURBANK CHECKED BY: MIKE CHENETTE
CVPS RETAINING WALL DETAILS CVPS-06 SHEET 185 OF 367

v:\BES\act\198510002\transportation\dwg\contract\plot_files\zd307\cvps.06.pft