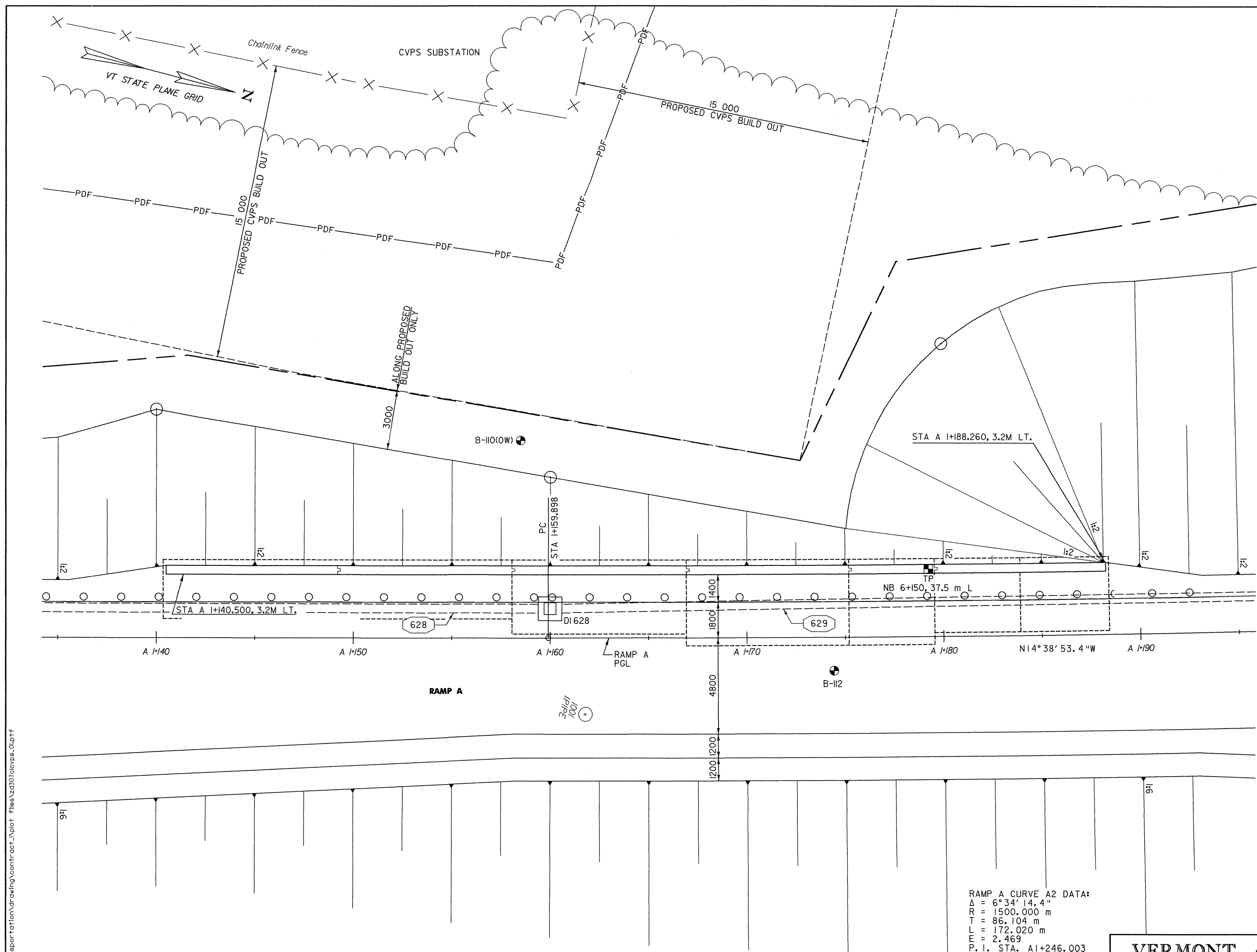


BORING CHART

BORING NO.	STATION (NB)	OFFSET (m)	GROUND ELEV.
B-110(O/W)	6+129.000	44.5 L	253.25
B-112	6+145.000	32.5 L	253.01
TP	6+150.000	37.5 L	-----

LEGEND

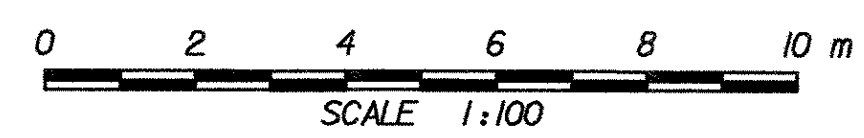
- LOCATION OF BORINGS DRILLED IN 2001
- LOCATION OF BORINGS DRILLED IN 2001 WITH OBSERVATION WELL
- LOCATION OF TEST PIT DUG IN 2001



RAMP A CURVE A2 DATA:
 $\Delta = 6^\circ 34' 14.4''$
 $R = 1500.000 \text{ m}$
 $T = 86.104 \text{ m}$
 $L = 172.020 \text{ m}$
 $E = 2.469$
 P. I. STA. A1+246.003

NOTE:
 FOR CROSS SECTIONS, SEE
 RAMP D CROSS SECTIONS
 (DX-03 & DX-04).

RAMP A CONCRETE RETAINING WALL PLAN



VERMONT AGENCY OF TRANSPORTATION

PROJECT NAME: BENNINGTON
 PROJECT NUMBER: AC NH 019-(151)

FILE NAME: ...\\plot files\zd307\cvps_01.plt PLOT DATE: 2/2/2009
 DESIGN SUPERVISOR: GREG EDWARDS DRAWN BY: STANTEC
 DESIGNED BY: SCOTT BURBANK CHECKED BY: MIKE CHENETTE
CVPS RETAINING WALL PLAN CVPS-01 SHEET 180 OF 367

V:\953\active\95310002\transportation\drawing\contract_1\plot_files\zd307\cvps_01.plt