

DESCRIPTION OF COMPONENTS:

FLAT GLASS ROADWAY LUMINAIRE - CUTOFF FEATURES

HOUSING:
DIE-CAST ALUMINUM HOUSING WITH STAINLESS STEEL BAIL LATCH. BLACK POLYESTER POWDER COAT FINISH, WITH NEMA TWISTLOCK PHOTOCONTROL RECEPTACLE.

SOCKET:
ADJUSTABLE MOGUL-BASE PORCELAIN SOCKET.

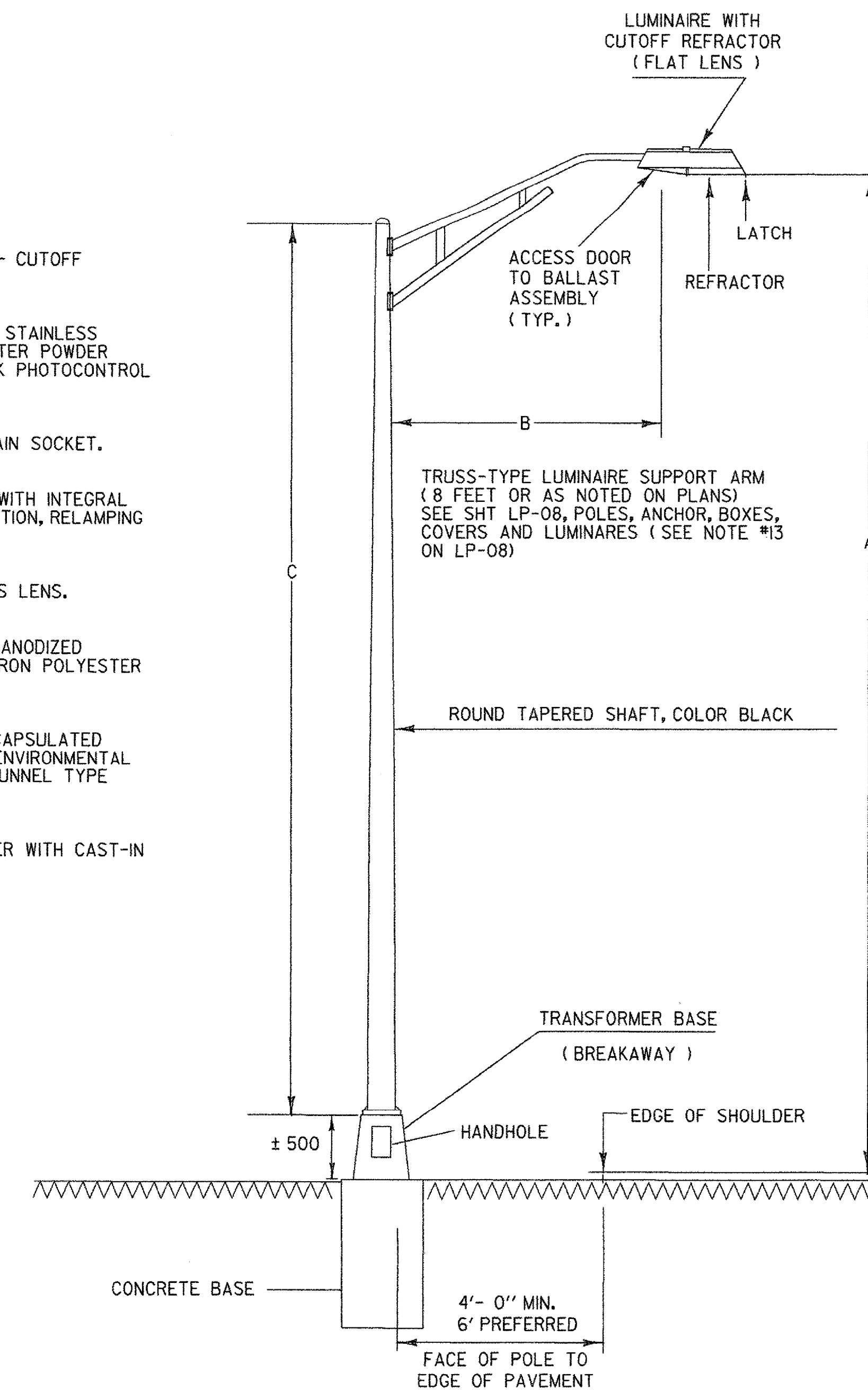
DOOR:
DIE-CAST ALUMINUM DOOR FRAME WITH INTEGRAL HINGES FOR HANDS FREE INSTALLATION, RELAMPING AND MAINTENANCE.

LENS:
REMOVABLE TEMPERED FLAT GLASS LENS.

REFLECTOR:
OPTICAL SYSTEM - HYDROFORMED ANODIZED ALUMINUM REFLECTOR WITH A DACRON POLYESTER FILTER.

BALLAST ASSEMBLY:
HARD MOUNTED BALLAST WITH ENCAPSULATED STARTER FOR PROTECTION FROM ENVIRONMENTAL ABUSE. STANDARD TWO POSITION TUNNEL TYPE COMPRESSION TERMINAL BLOCK.

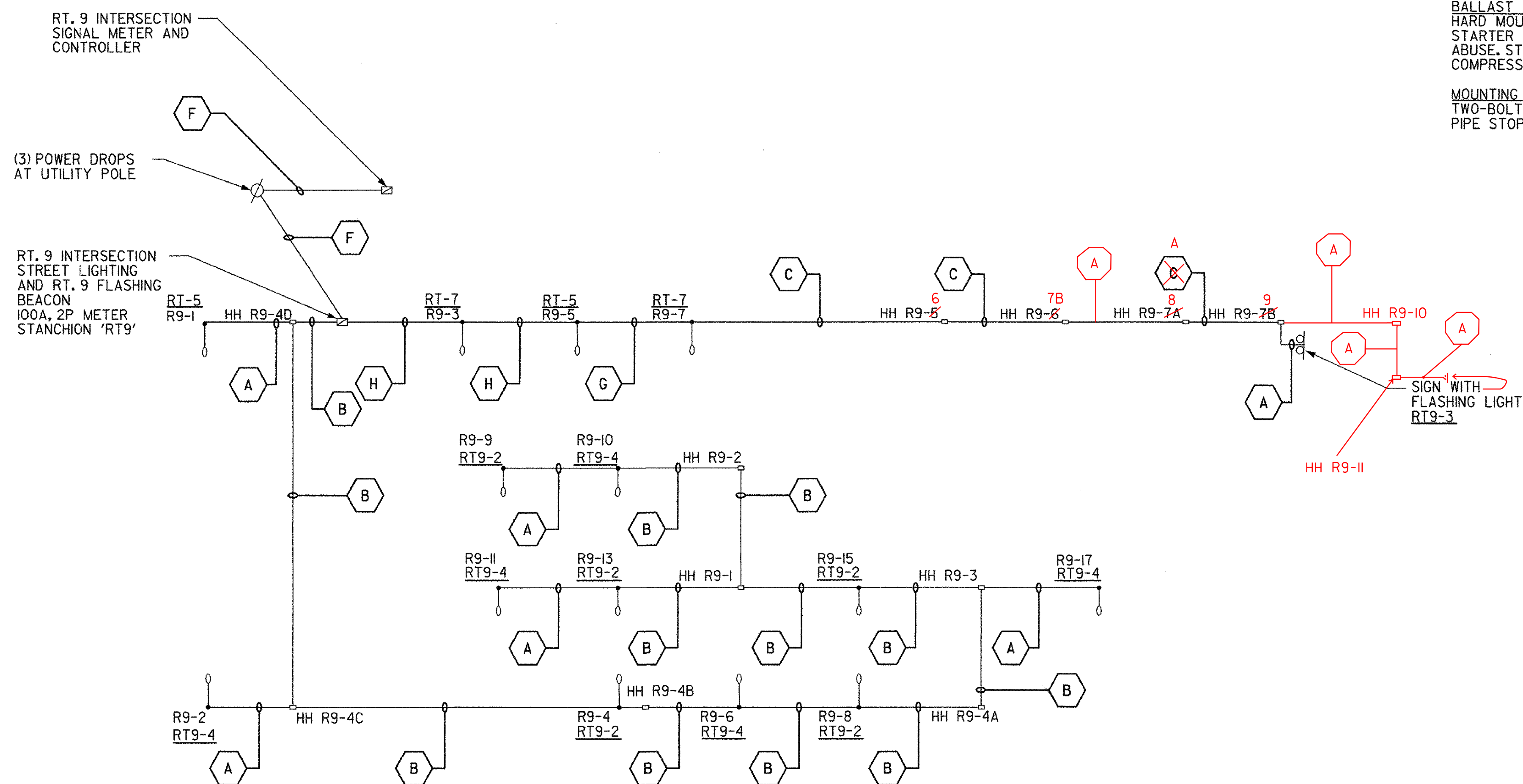
MOUNTING:
TWO-BOLT/ONE BRACKET SLIPFITTER WITH CAST-IN PIPE STOP AND LEVELING STEPS.



DIMENSIONS:
A = MOUNTING HEIGHT
B = LUMINAIRE SUPPORT ARM LENGTH
C = POLE HEIGHT

STREET LIGHT POLE DETAIL

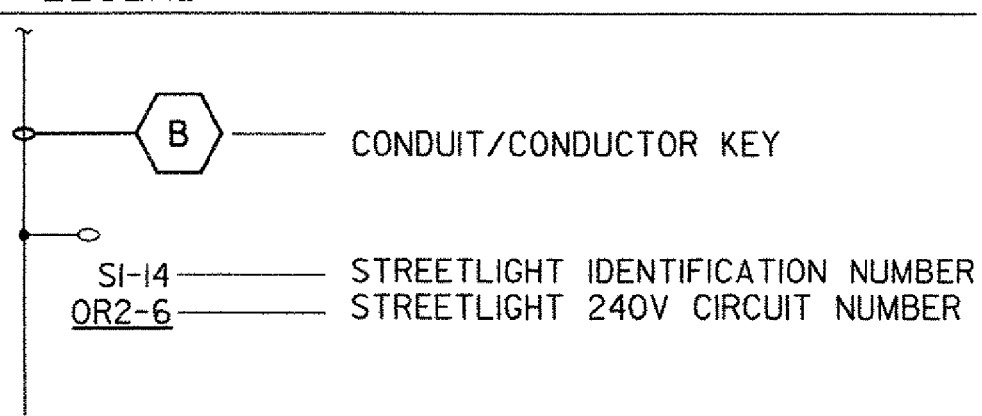
FOR OTHER BREAKAWAY SUPPORTS SEE VAOT STANDARD SHEET E-180B
FOR OFFSET, MOUNTING HT, LENGTH OF POLE, AND ARM SEE
STREET LIGHTING LOCATIONS ON PLAN



RT 9 INTERSECTION SIGNAGE AND LIGHTING CIRCUITS

NOTE:
1. ONE 120V CIRCUIT FOR SIGNS WITH FLASHING LIGHTS.

LEGEND



VERMONT AGENCY OF TRANSPORTATION



PROJECT NAME: BENNINGTON
PROJECT NUMBER: AC NH 019-(K51)

FILE NAME: ...plot files\zd307\det_lgt.plt PLOT DATE: 1/30/2009
DESIGN SUPERVISOR: GREG EDWARDS DRAWN BY: STANTEC
DESIGNED BY: MARC FOISY CHECKED BY: GARY SANTY
LIGHTING DETAILS AND NOTES LP-09 SHEET 155 OF 367