

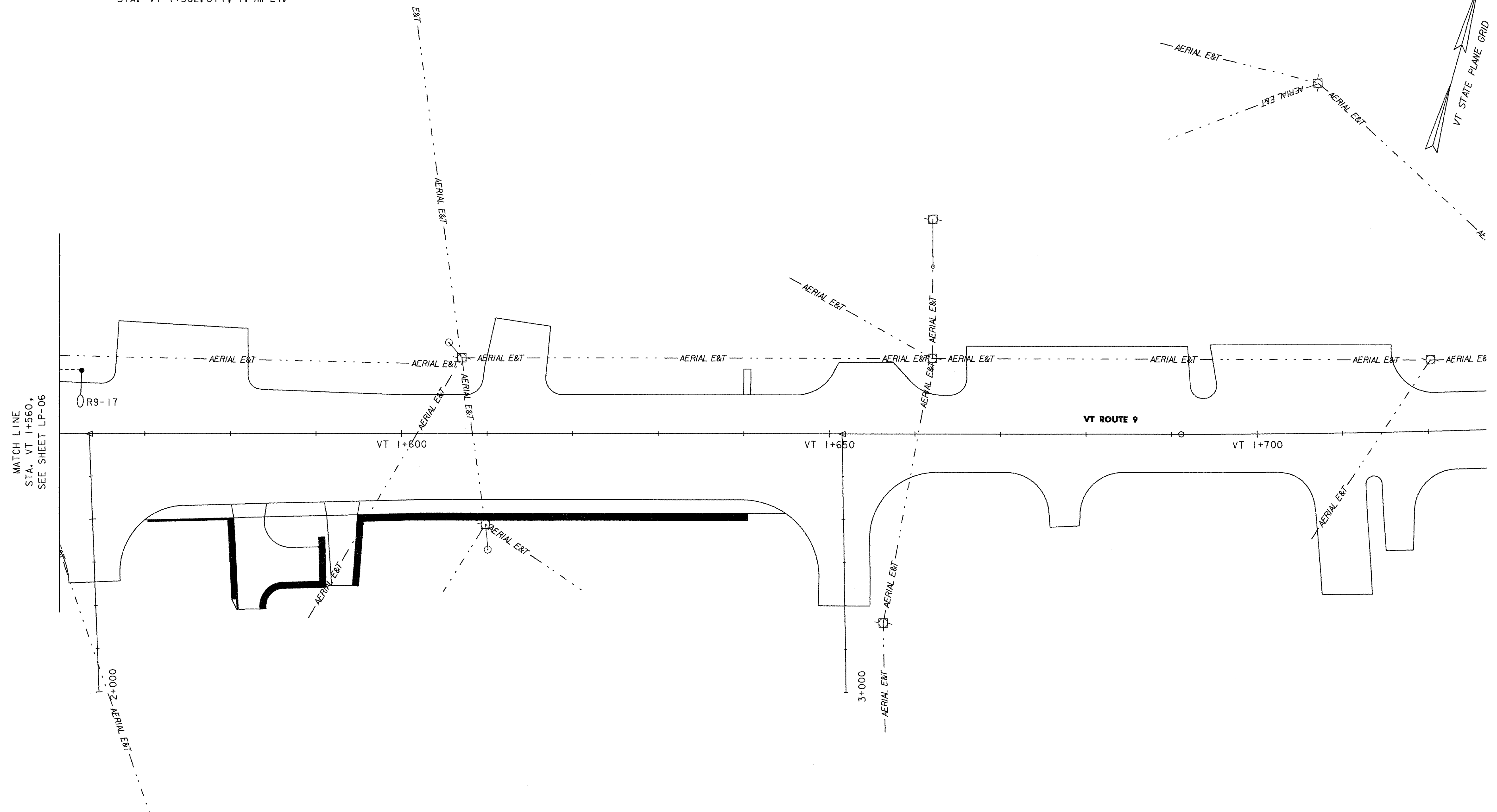
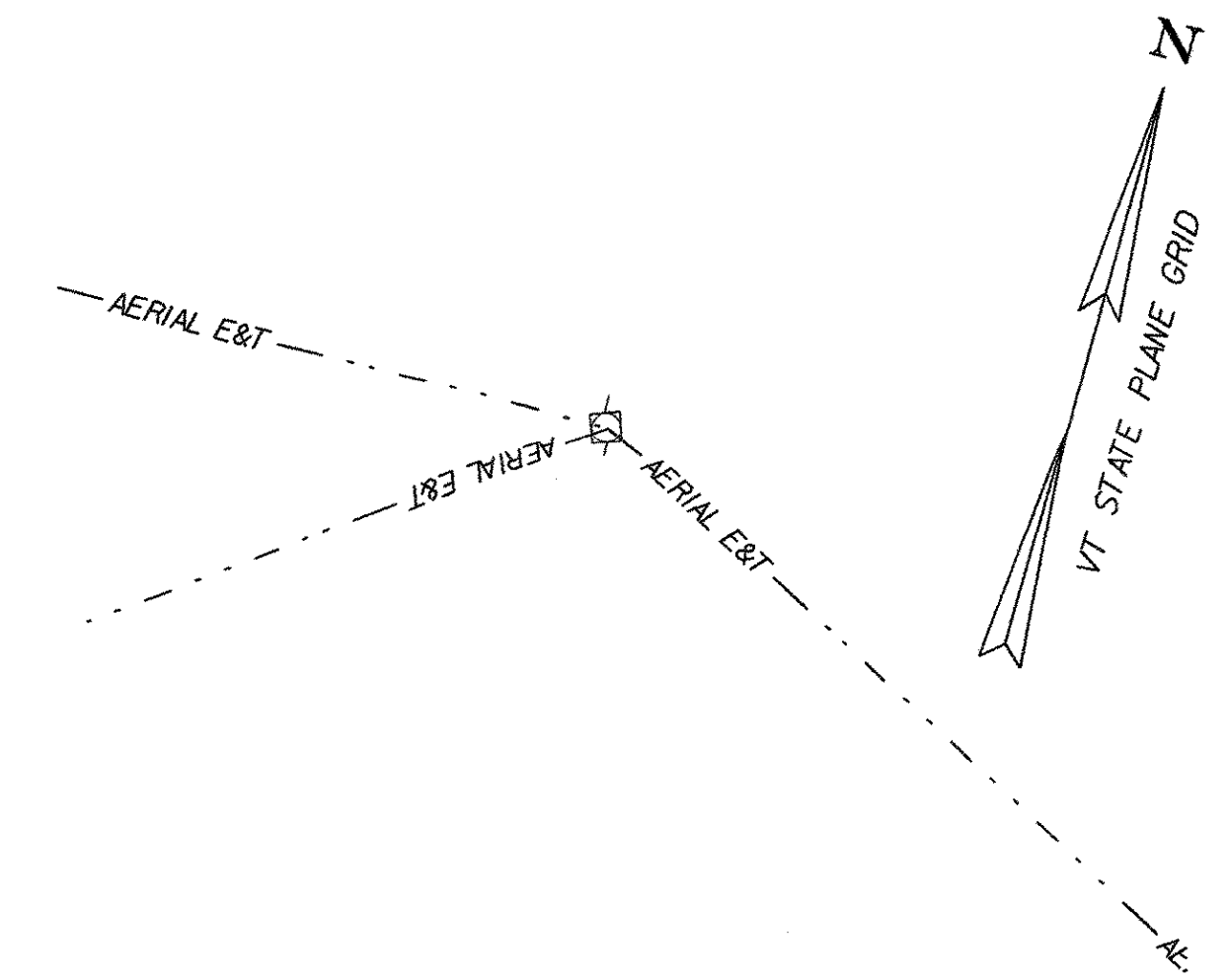
**STREET LIGHTING LEGEND**

- TYPE 'K' STREET LIGHT
- UNDERGROUND ELECTRICAL CONDUIT
- HAND HOLE / JUNCTION BOX

**ELECTRICAL CONDUIT**  
STA. VT 1+560.000, 7.5m LT. - STA. VT 1+562.614, 7.4m LT.

**LIGHT POLE**  
STA. VT 1+562.614, 7.4m LT.

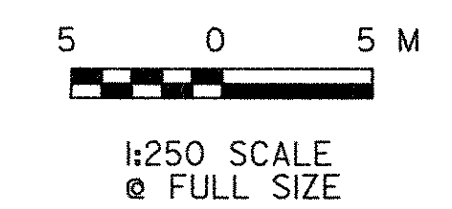
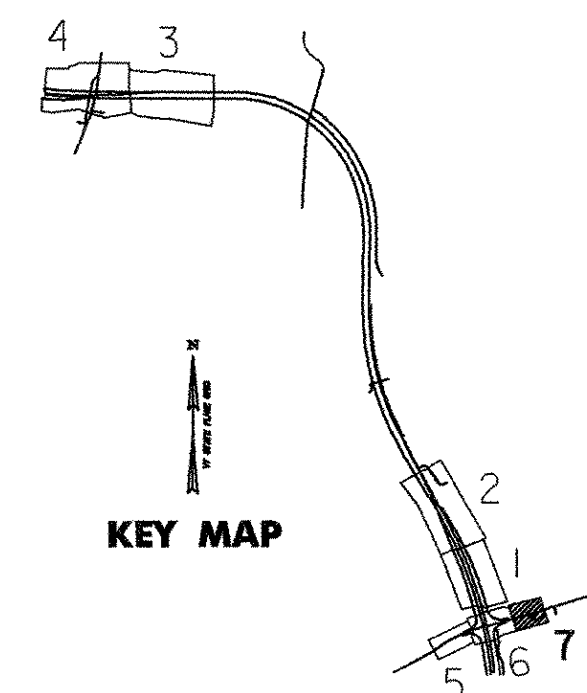
**LIGHT POLE BASE**  
STA. VT 1+562.614, 7.4m LT.



NOTE:  
ALL LIGHT POLES, FIXTURES, EQUIPMENT, TRAFFIC SIGNAL POLES AND SIGNAL HEADS ALONG ROUTE 9 ARE TO BE BLACK ANONIZED ALUMINUM.

**STREET LIGHTING LOCATIONS - LP-07**

POLE NO.	LOCATION (M)	OFF SET (M)	BREAK-AWAY BASE	LUMINAIRE WATTS	DIST. TYPE	VOLTAGE	LUMINAIRE MOUNTING HT. TO ROADWAY (M)	TRANSFORMER BASE HT. (M)	LENGTH OF POLE (M)	ARM RISE (M)	ARM LENGTH (M)	CONCRETE BASE DIAM / DEPTH (mm) / (mm)
R9-17	VT+562.2	7.4 LT	NO	250	II	240	10.6	0.4	9.2	1	2.5	750 / 1800



**VERMONT AGENCY OF TRANSPORTATION**

PROJECT NAME: BENNINGTON	PLOT DATE: 2/2/2009
PROJECT NUMBER: AC NH 019-K(51)	DRAWN BY: STANTEC
FILE NAME: ...\\zd307c\lgt-plans.250.ppf	DESIGNED BY: MARC FOISY
DESIGN SUPERVISOR: GREG EDWARDS	CHECKED BY: GARY SANTY
<b>LIGHTING PLAN LP-07</b>	SHEET 153 OF 367

Y:\1953\active\1953\0002\transportation\drawing\contract\plot\_files\zd307c\lgt-plans.250.ppf