

JUNCTION BOX

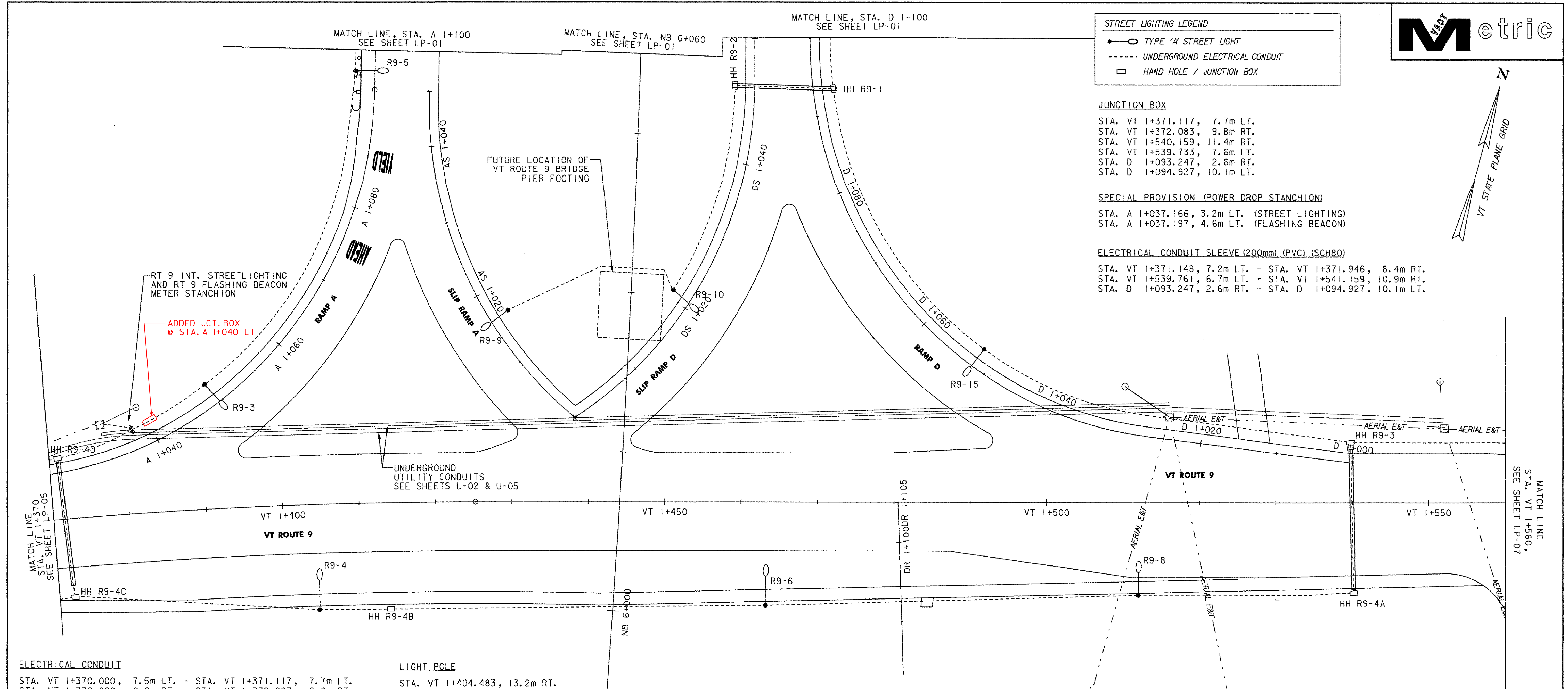
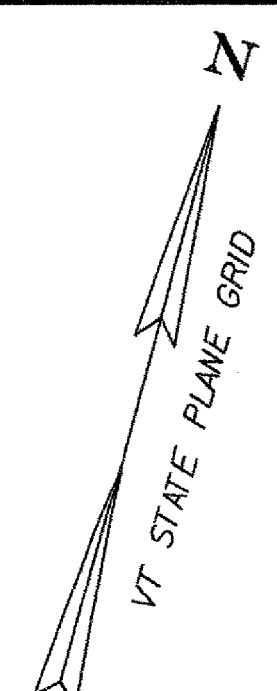
STA. VT 1+371.117, 7.7m LT.
 STA. VT 1+372.083, 9.8m RT.
 STA. VT 1+540.159, 11.4m RT.
 STA. VT 1+539.733, 7.6m LT.
 STA. D 1+093.247, 2.6m RT.
 STA. D 1+094.927, 10.1m LT.

SPECIAL PROVISION (POWER DROP STANCHION)

STA. A 1+037.166, 3.2m LT. (STREET LIGHTING)
 STA. A 1+037.197, 4.6m LT. (FLASHING BEACON)

ELECTRICAL CONDUIT SLEEVE (200mm) (PVC) (SCH80)

STA. VT 1+371.148, 7.2m LT. - STA. VT 1+371.946, 8.4m RT.
 STA. VT 1+539.761, 6.7m LT. - STA. VT 1+541.159, 10.9m RT.
 STA. D 1+093.247, 2.6m RT. - STA. D 1+094.927, 10.1m LT.



ELECTRICAL CONDUIT

STA. VT 1+370.000, 7.5m LT.	- STA. VT 1+371.117, 7.7m LT.
STA. VT 1+370.000, 10.0m RT.	- STA. VT 1+372.083, 9.8m RT.
STA. VT 1+371.117, 7.7m LT.	- STA. VT 1+372.083, 9.8m RT.
STA. VT 1+372.083, 9.8m RT.	- STA. VT 1+404.483, 13.2m RT.
STA. VT 1+404.483, 13.2m RT.	- STA. VT 1+463.181, 13.0m RT.
STA. VT 1+463.181, 13.0m RT.	- STA. VT 1+511.995, 11.7m RT.
STA. VT 1+511.995, 11.7m RT.	- STA. VT 1+541.159, 11.4m RT.
STA. VT 1+539.733, 7.6m LT.	- STA. VT 1+541.159, 11.4m RT.
STA. VT 1+539.733, 7.6m LT.	- STA. VT 1+560.000, 7.5m LT.
STA. A 1+026.523, 1.9m LT.	- STA. A 1+037.166, 3.2m LT.
STA. A 1+033.878, 4.6m LT.	- STA. A 1+037.166, 3.2m LT.
STA. A 1+033.878, 4.6m LT.	- STA. A 1+037.197, 4.6m LT.
STA. A 1+037.166, 3.2m LT.	- STA. A 1+049.120, 2.9m LT.
STA. A 1+049.120, 2.9m LT.	- STA. A 1+097.357, 2.5m LT.
STA. A 1+097.357, 2.5m LT.	- STA. A 1+100.000, 2.5m LT.
STA. D 1+000.590, 2.6m RT.	- STA. D 1+051.797, 2.6m RT.
STA. D 1+051.797, 2.6m RT.	- STA. D 1+093.247, 2.6m RT.
STA. D 1+093.247, 2.6m RT.	- STA. D 1+094.927, 10.1m LT.
STA. D 1+093.247, 2.6m RT.	- STA. D 1+100.000, 2.6m RT.
STA. DS 1+021.065, 2.6m LT.	- STA. DS 1+049.829, 2.6m LT.
STA. VT 1+429.475, 24.0m LT.	- STA. VT 1+451.113, 26.6m LT.

LIGHT POLE

STA. VT 1+404.483, 13.2m RT.	- STA. VT 1+463.181, 13.0m RT.
STA. VT 1+511.995, 11.7m RT.	- STA. A 1+049.120, 2.9m LT.
STA. A 1+049.120, 2.9m LT.	- STA. A 1+097.357, 2.5m LT.
STA. D 1+051.797, 2.6m RT.	- STA. D 1+021.065, 2.6m LT.
STA. AS 1+016.342, 2.6m RT.	- STA. AS 1+016.342, 2.6m RT.

LIGHT POLE BASES

STA. VT 1+404.483, 13.2m RT.	- STA. VT 1+463.181, 13.0m RT.
STA. VT 1+511.995, 11.7m RT.	- STA. A 1+049.120, 2.9m LT.
STA. A 1+049.120, 2.9m LT.	- STA. A 1+097.357, 2.5m LT.
STA. D 1+051.797, 2.6m RT.	- STA. D 1+093.247, 2.6m RT.
STA. D 1+093.247, 2.6m RT.	- STA. D 1+094.927, 10.1m LT.
STA. DS 1+021.065, 2.6m LT.	- STA. DS 1+021.065, 2.6m LT.
STA. AS 1+016.342, 2.6m RT.	- STA. AS 1+016.342, 2.6m RT.

BREAKAWAY FEATURE FOR LIGHT POLE

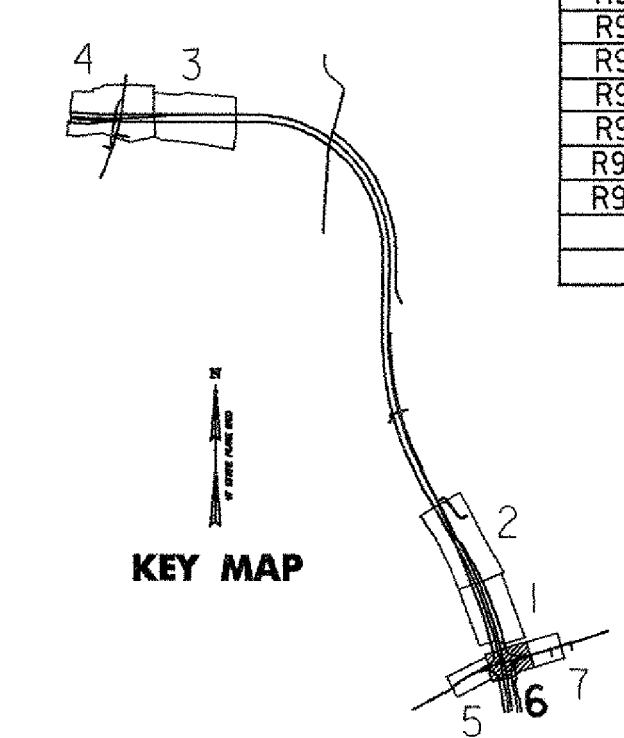
STA. A 1+049.120, 2.9m LT.	- STA. A 1+097.357, 2.5m LT.
STA. D 1+051.797, 2.6m RT.	- STA. DS 1+021.065, 2.6m LT.
STA. DS 1+021.065, 2.6m LT.	- STA. AS 1+016.342, 2.6m RT.

HAND HOLE LOCATIONS - LP-06

HAND HOLE NO.	LOCATION	TYPE	REMARKS
HH R9-1	SCALED PER LIGHTING PLANS	JUNCTION BOX	
HH R9-2	SCALED PER LIGHTING PLANS	JUNCTION BOX	
HH R9-3	SCALED PER LIGHTING PLANS	JUNCTION BOX	
HH R9-4A	SCALED PER LIGHTING PLANS	JUNCTION BOX	
HH R9-4B	SCALED PER LIGHTING PLANS	JUNCTION BOX	
HH R9-4C	SCALED PER LIGHTING PLANS	JUNCTION BOX	

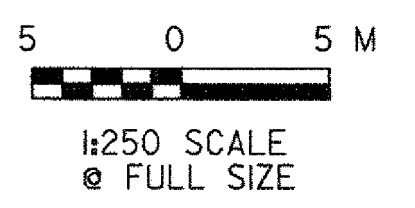
STREET LIGHTING LOCATIONS - LP-06

POLE NO.	LOCATION (M)	OFF SET (M)	BREAK AWAY BASE	LUMINAIRE WATTS	DIST. TYPE	VOLTAGE	LUMINAIRE MOUNTING HT. TO ROADWAY (M)	TRANSFORMER BASE HT. (M)	LENGTH OF POLE (M)	ARM RISE (M)	ARM LENGTH (M)	CONCRETE BASE DIAM / DEPTH (mm) / (mm)
R9-3	A 1+049.1	2.9 LT	YES	250		240	10.6	0.4	9.2	1	2.5	750 / 1800
R9-4	VT 1+404.5	13.2 RT	NO	250		240	10.6	0.4	9.2	1	3.5	750 / 2400
R9-5	A 1+097.4	2.5 LT	YES	250		240	10.6	0.4	9.2	1	2.5	750 / 1800
R9-6	VT 1+463.2	13.0 RT	NO	250		240	10.6	0.4	9.2	1	3.5	750 / 2400
R9-8	VT 1+512.0	11.7 RT	NO	250		240	10.6	0.4	9.2	1	2.5	750 / 1800
R9-9	AS 1+016.3	2.6 LT	YES	250		240	10.6	0.4	9.2	1	2.5	750 / 1800
R9-10	DS 1+021.1	2.6 LT	YES	250		240	10.6	0.4	9.2	1	2.5	750 / 1800
R9-15	D 1+051.8	2.6 RT	YES	250		240	10.6	0.4	9.2	1	2.5	750 / 1800



V:\1953\active\19530002\transportation\drawing\contract\1953\2307ciltg_plans_250.dwg
 V:\1953\active\19530002\transportation\drawing\contract\1953\2307ciltg_plans_250.dwg

NOTE:
 ALL LIGHT POLES, FIXTURES, EQUIPMENT, TRAFFIC SIGNAL POLES AND SIGNAL HEADS ALONG ROUTE 9 TO BE BLACK ANONIZED ALUMINUM. INCLUDING R9-3, R9-9, R9-10 AND R9-15.



VERMONT AGENCY OF TRANSPORTATION

PROJECT NAME: BENNINGTON
 PROJECT NUMBER: AC NH 019-(K51)
 FILE NAME: ...2307ciltg_plans_250.pxf PLOT DATE: 2/2/2009
 DESIGN SUPERVISOR: GREG EDWARDS DRAWN BY: STANTEC
 DESIGNED BY: MARC FOISY CHECKED BY: GARY SANTY
LIGHTING PLAN LP-06 SHEET 152 OF 367