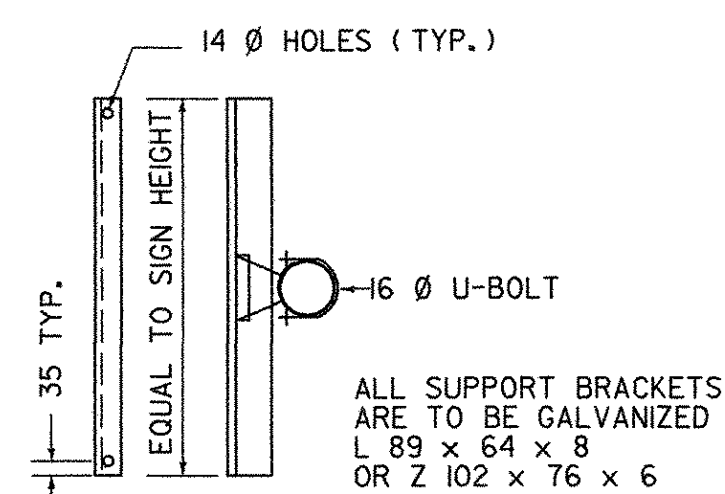
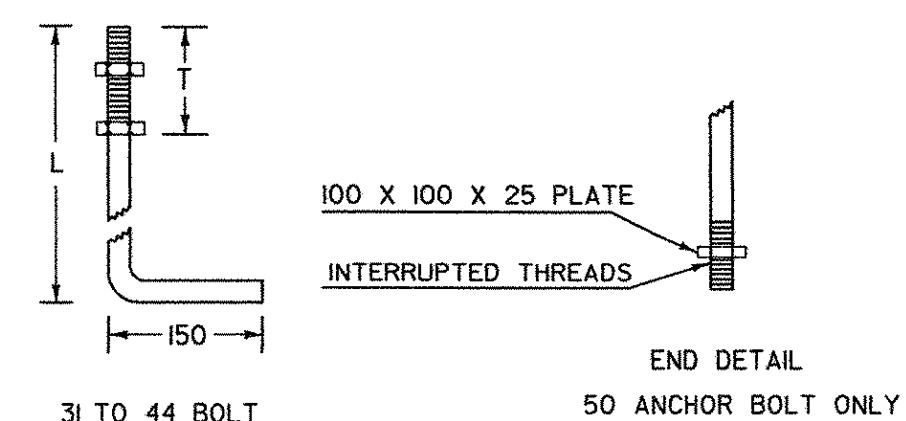


DETAIL A

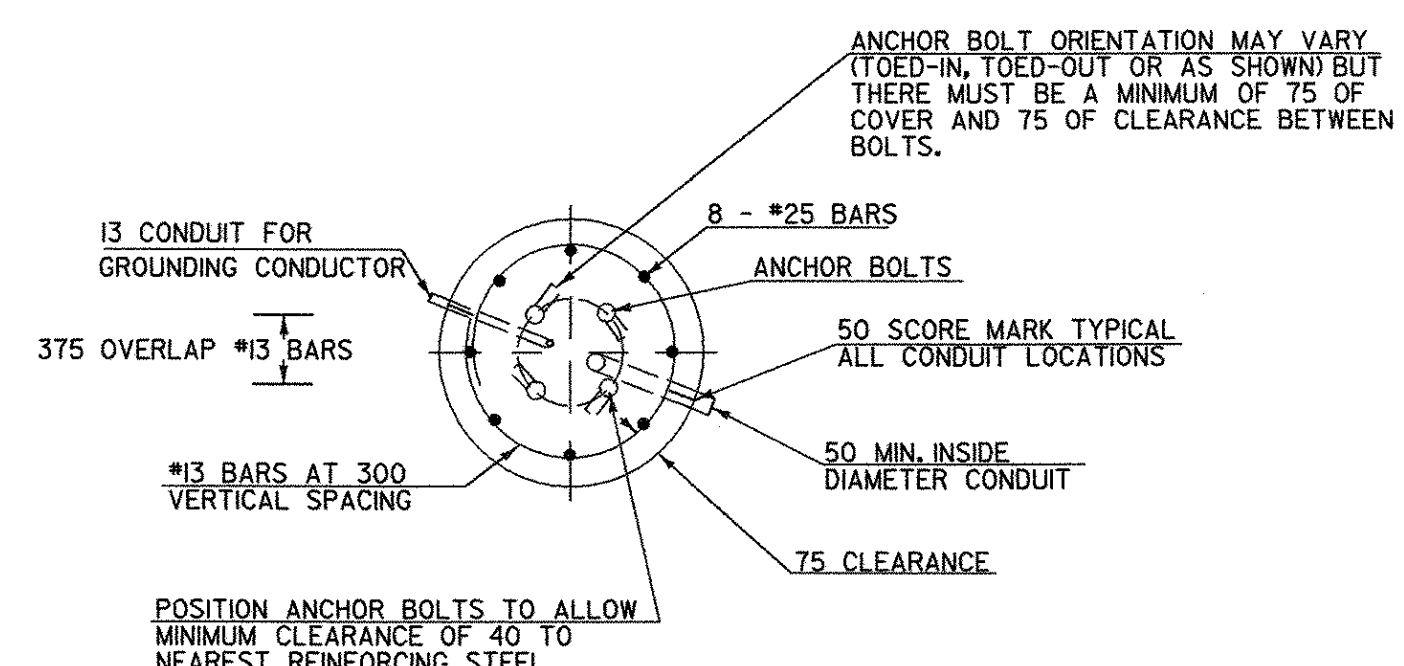


SIGN BRACKET DETAILS

ANCHOR BOLT DETAIL		
SIZE	L	T
31 x 1220	1068	203
38 x 1525	1373	229
44 x 2288	2135	229
51 x 2440	2440	229



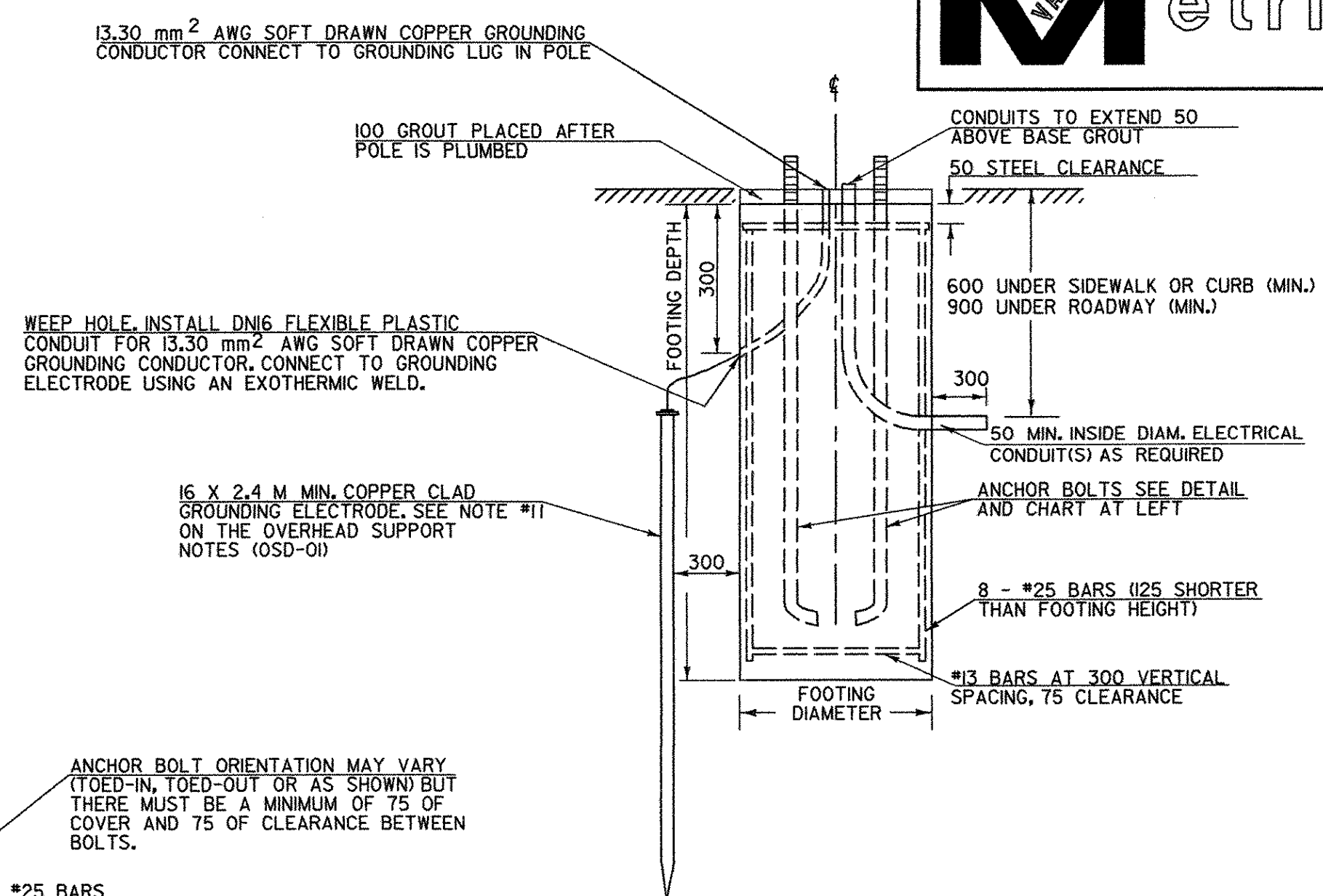
ANCHOR BOLT DETAIL



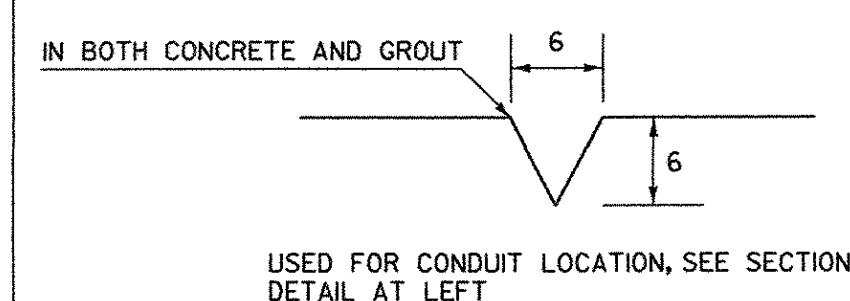
SECTION

OVERHEAD TRAFFIC SIGN BRIDGE FOOTING DETAIL

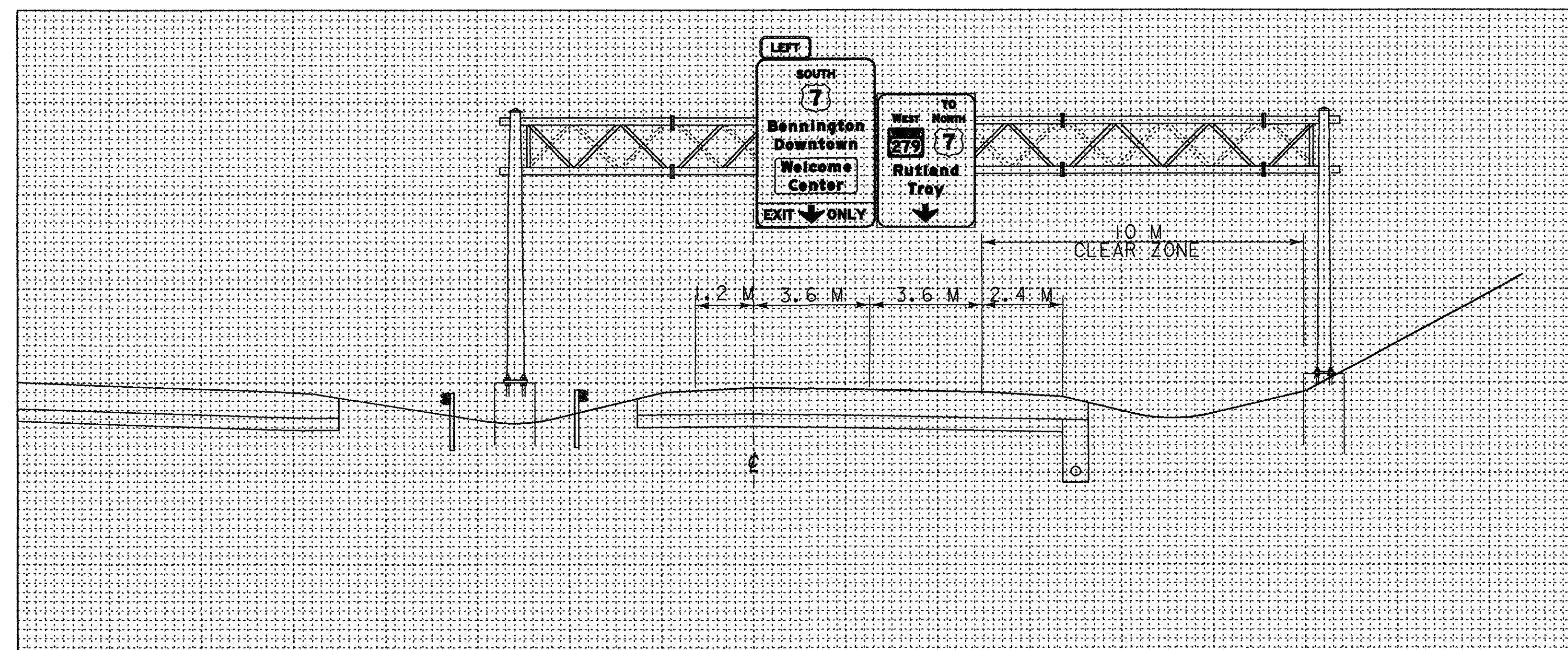
(SPREAD FOOTINGS OR PILES ARE OPTIONAL)



ELEVATION



50 SCORE MARK DETAIL

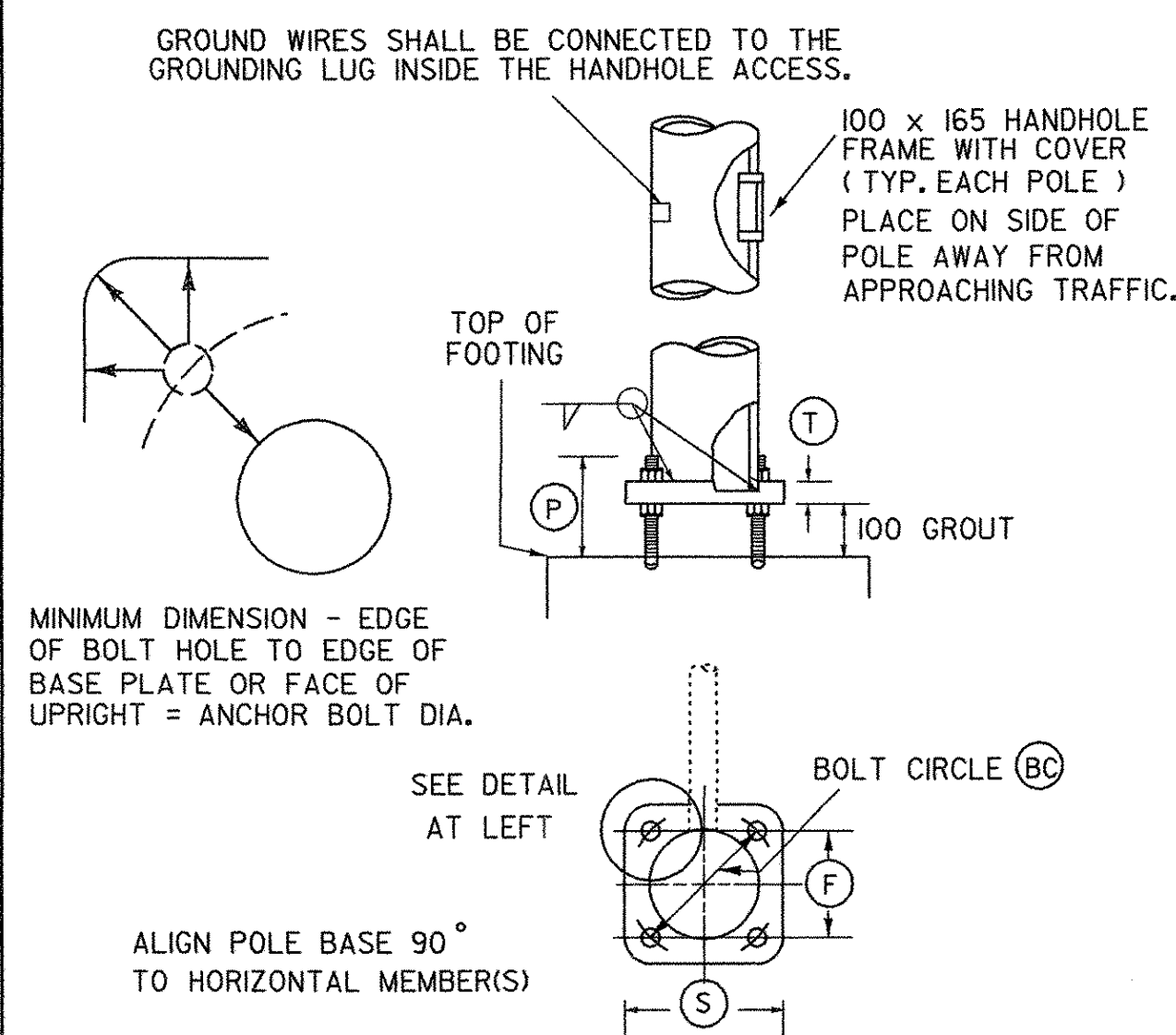


OVERHEAD SIGN BRIDGE CROSS SECTION @ NB 9+260.0
(SEE SHEET SP-10 FOR LOCATION PLAN)
NOT TO SCALE

NOTES:

- SEE SHEET OVERHEAD SUPPORT NOTES OSD-01 FOR ADDITIONAL INFORMATION
- MANUFACTURER TO DETERMINE TYPE OF STRUCTURE REQUIRED.
- MONOTUBES SHALL NOT BE USED FOR SIGNS OVER 3.05 M IN HEIGHT.
- STREET LIGHTING IS OPTIONAL. SEE PLAN SHEETS OR SECTION.
- MINIMUM CLEARANCE FROM SIGNS TO ROADWAY IS 5.18 M.
- ALL DIMENSIONS IN MILLIMETERS (MM) EXCEPT WHERE NOTED.
- SIGNS SHALL BE MOUNTED SUCH THAT THE ARROW IS PLACED ABOVE THE CENTER OF THE LANE. THE OVERHEAD SIGNS AT NB 9+260.0 SHALL BE MOUNTED WITH 50 SEPARATION BETWEEN SIGNS. SEE TSD-01 AND TSD-02 FOR SIGN DIMENSIONS.
- MAXIMUM EXPOSURE OF FOOTING ABOVE FINISH EXISTING GROUND SHALL BE 100mm

BASE PLATE / BOLT DATA					
(BC)	(F)	(S)	(T)	(P)	ANCHOR BOLT SIZE



POLE BASE AND BASE PLATE DETAIL

VERMONT AGENCY OF TRANSPORTATION



PROJECT NAME: BENNINGTON
PROJECT NUMBER: AC NH 019-(K51)

FILE NAME: ...\\plot files\\vd307cldet.osd.ptf PLOT DATE: 3/3/2009
DESIGN SUPERVISOR: GREG EDWARDS DRAWN BY: STANTEC
DESIGNED BY: MARC FOISY CHECKED BY: GARY SANTY
OVERHEAD SUPPORT DETAILS OSD-03 SHEET 142 OF 367

OVERHEAD TRAFFIC SIGN BRIDGE / FOOTING DETAIL SHEET

v:\953\active\9530002\transportation\drawing\contract\plot_files\az307cldet.osd.ptf