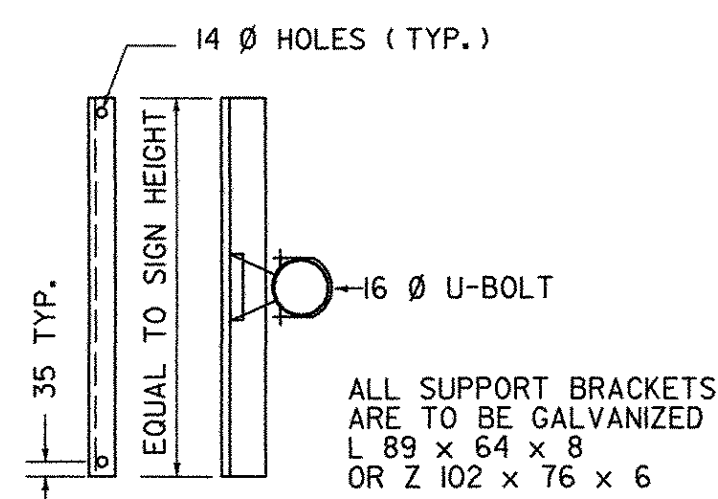


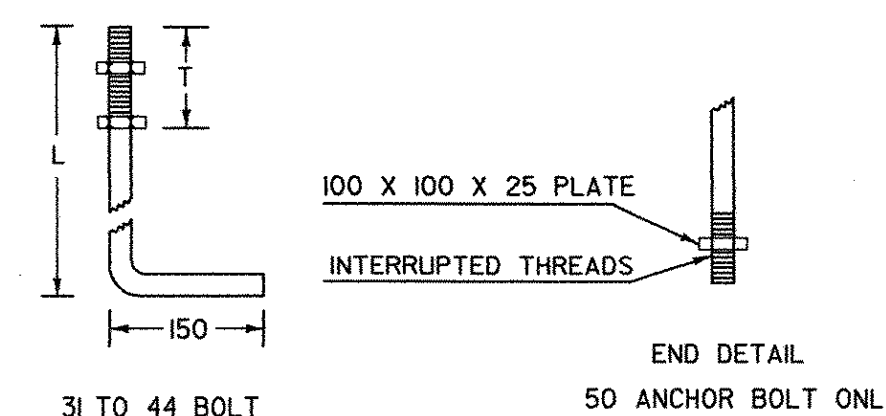
DETAIL A



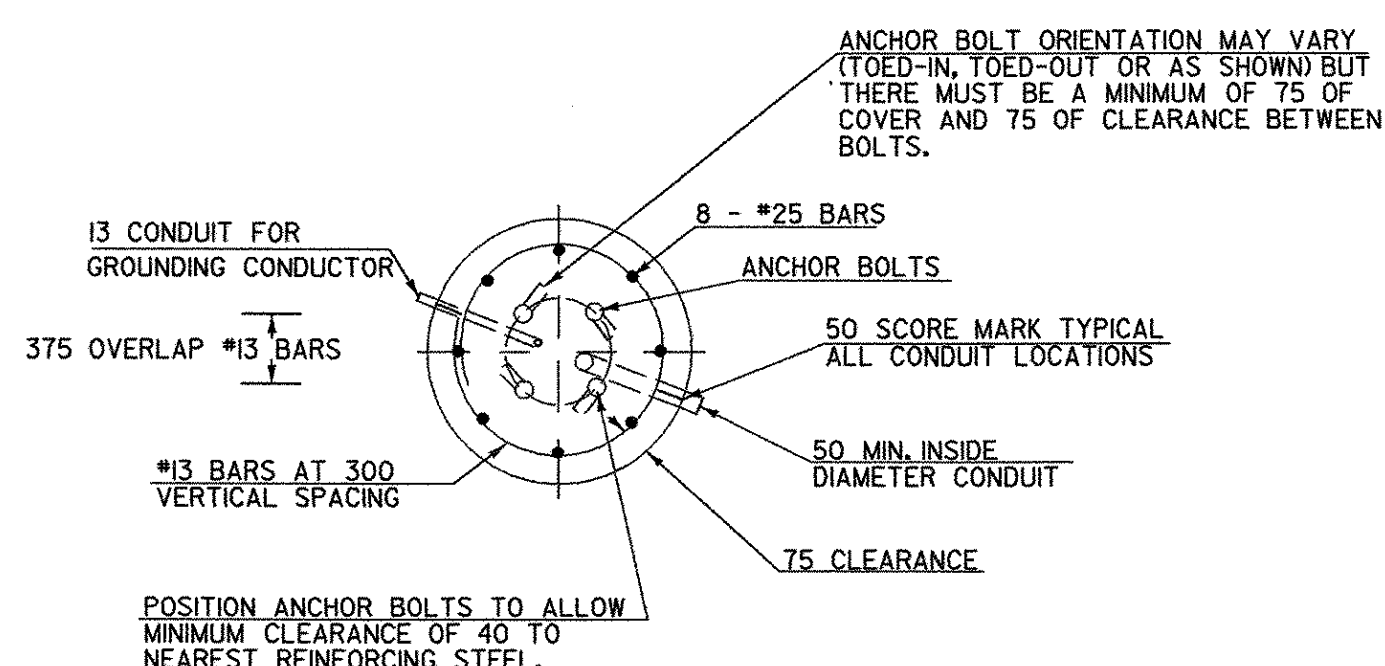
SIGN BRACKET DETAILS

ALL SUPPORT BRACKETS ARE TO BE GALVANIZED L 89 x 64 x 8 OR Z 102 x 76 x 6

ANCHOR BOLT DETAIL	SIZE	L	T
	31 x 1220	1068	203
	38 x 1525	1373	229
	44 x 2288	2135	229
	51 x 2440	2440	229



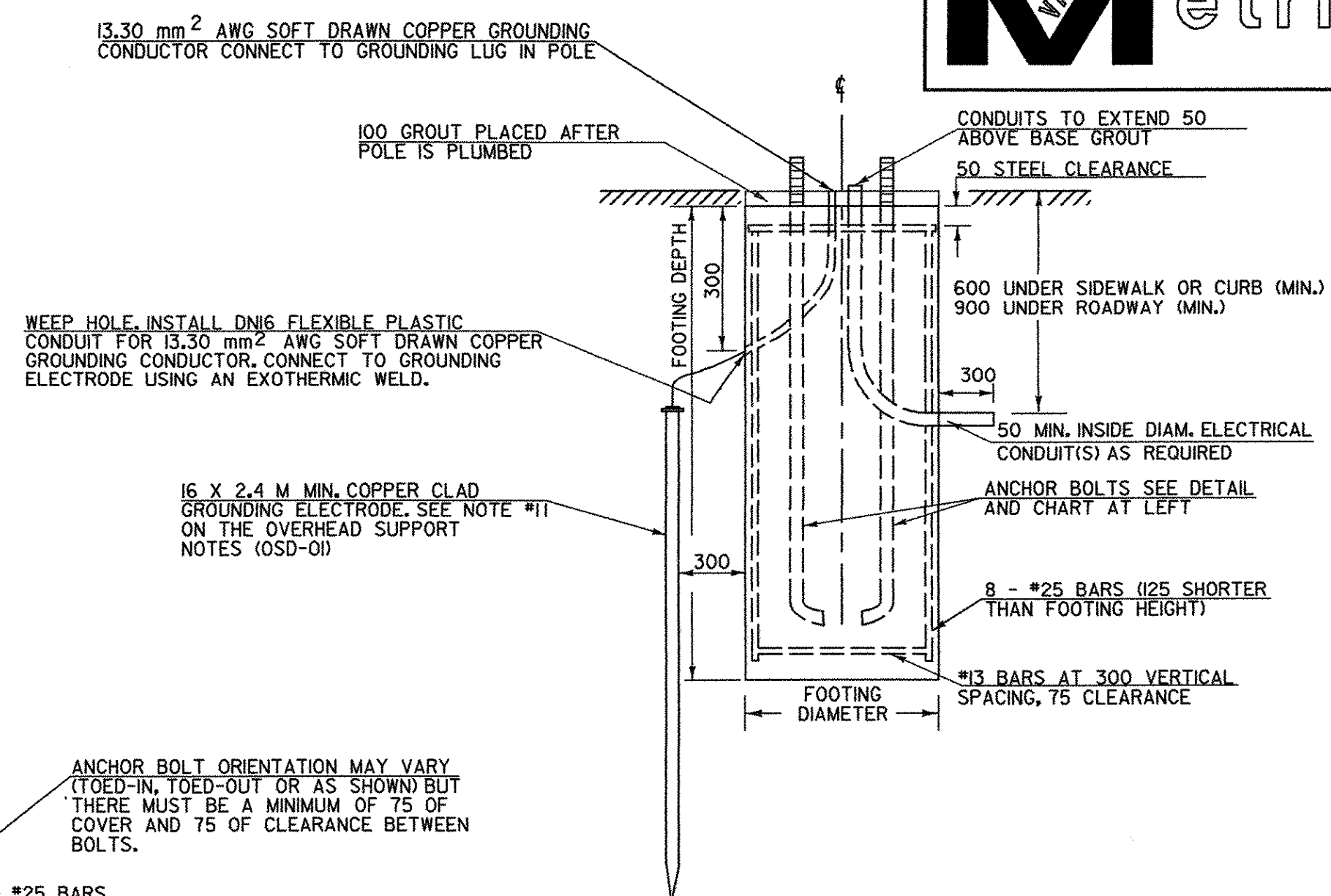
ANCHOR BOLT DETAIL



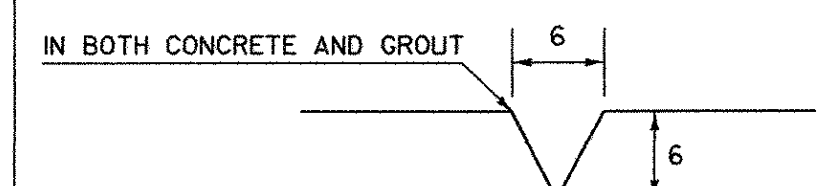
SECTION

OVERHEAD TRAFFIC SIGN BRIDGE FOOTING DETAIL

(SPREAD FOOTINGS OR PILES ARE OPTIONAL)

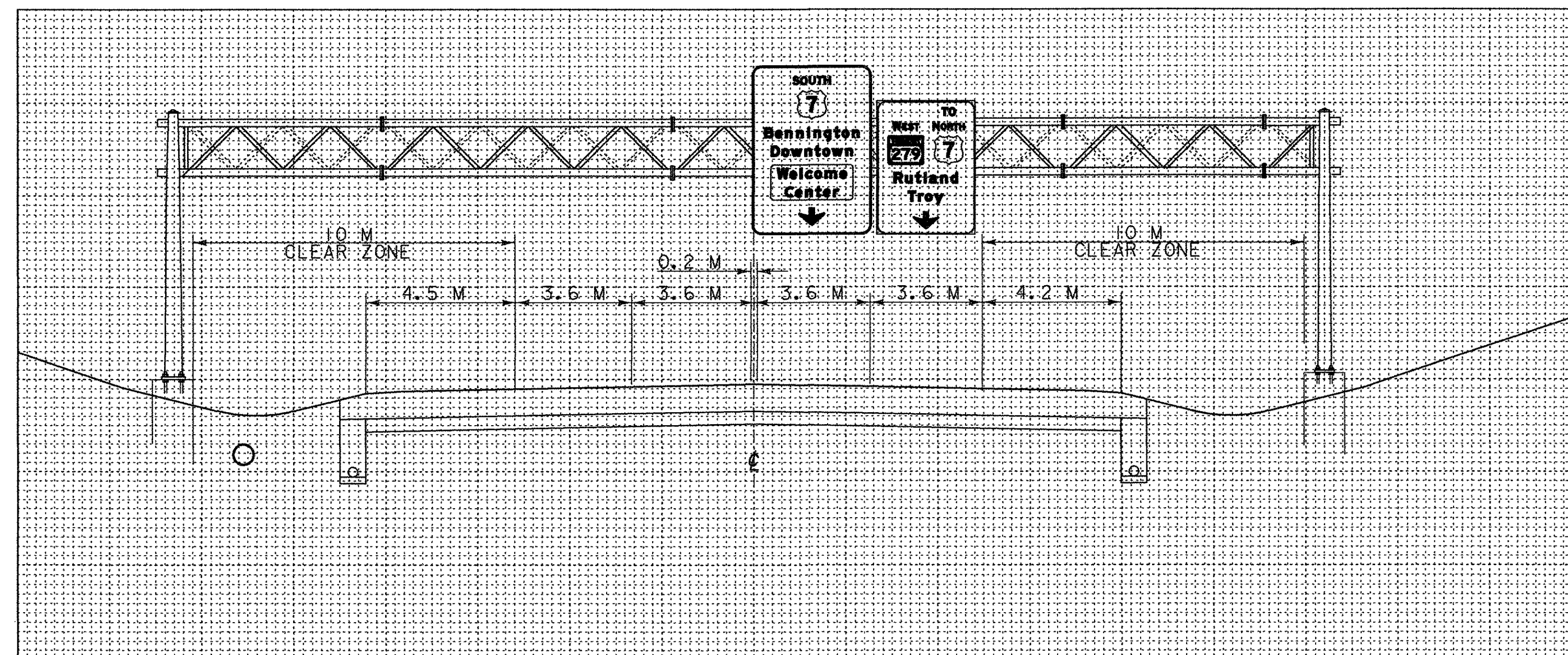


ELEVATION



USED FOR CONDUIT LOCATION, SEE SECTION DETAIL AT LEFT

50 SCORE MARK DETAIL

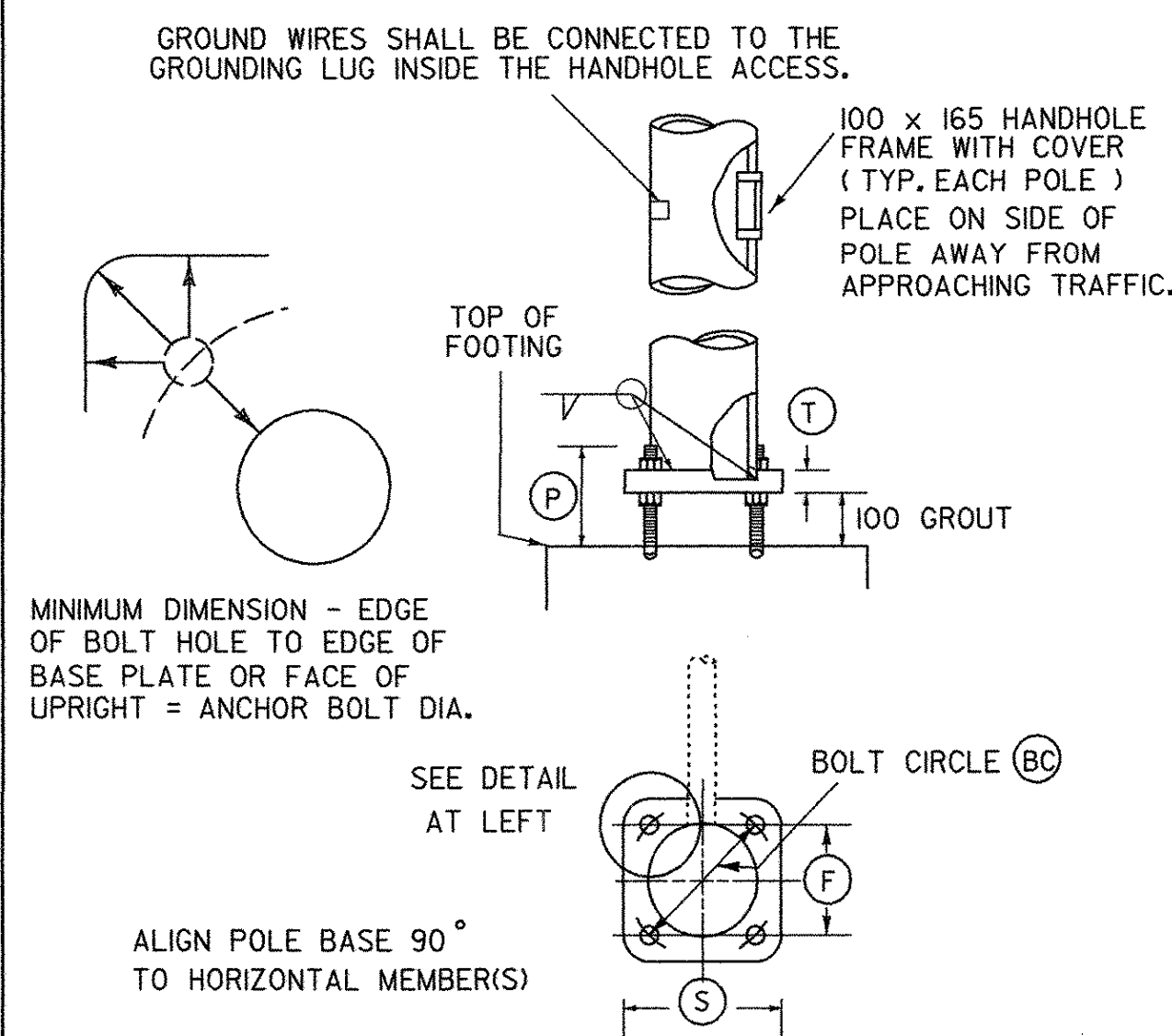


OVERHEAD SIGN BRIDGE CROSS SECTION @ NB 8+992.0
(SEE SHEET SP-09 FOR LOCATION PLAN)
NOT TO SCALE

NOTES:

- SEE SHEET OVERHEAD SUPPORT NOTES OSD-01 FOR ADDITIONAL INFORMATION
- MANUFACTURER TO DETERMINE TYPE OF STRUCTURE REQUIRED.
- MONOTUBES SHALL NOT BE USED FOR SIGNS OVER 3.05 M IN HEIGHT.
- STREET LIGHTING IS OPTIONAL. SEE PLAN SHEETS OR SECTION.
- MINIMUM CLEARANCE FROM SIGNS TO ROADWAY IS 5.18 M.
- ALL DIMENSIONS IN MILLIMETERS (MM) EXCEPT WHERE NOTED.
- SIGNS SHALL BE MOUNTED SUCH THAT THE ARROW IS PLACED ABOVE THE CENTER OF THE LANE. THE OVERHEAD SIGNS AT NB 8+992.0 SHALL BE MOUNTED WITH 175 SEPARATION BETWEEN SIGNS. SEE TSD-01 AND TSD-02 FOR SIGN DIMENSIONS.
- MAXIMUM EXPOSURE OF FOOTING ABOVE FINISH EXISTING GROUND SHALL BE 100mm

BASE PLATE / BOLT DATA					ANCHOR BOLT SIZE
BC	F	S	T	P	



POLE BASE AND BASE PLATE DETAIL

VERMONT AGENCY OF TRANSPORTATION



PROJECT NAME: BENNINGTON
PROJECT NUMBER: AC NH 019-(K51)

FILE NAME: ...plot files\zd307cldet.osd.ptf PLOT DATE: 3/3/2009
DESIGN SUPERVISOR: GREG EDWARDS DRAWN BY: STANTEC
DESIGNED BY: MARC FOISY CHECKED BY: GARY SANTY
OVERHEAD SUPPORT DETAILS OSD-02 SHEET 141 OF 367

OVERHEAD TRAFFIC SIGN BRIDGE / FOOTING DETAIL SHEET