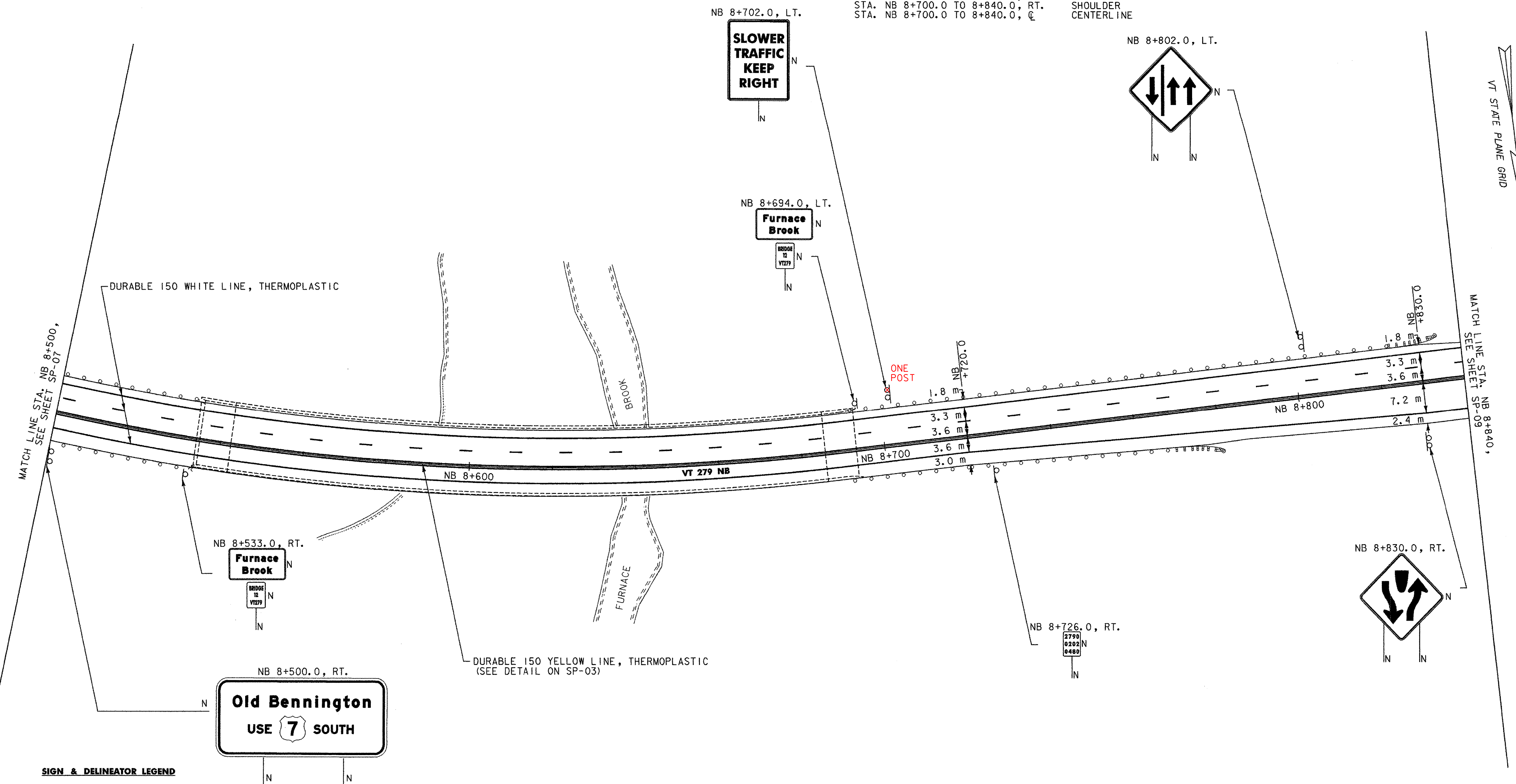


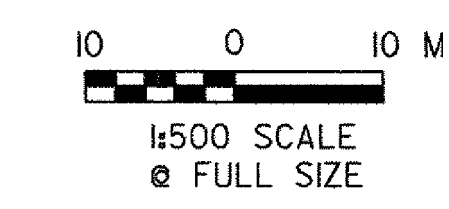
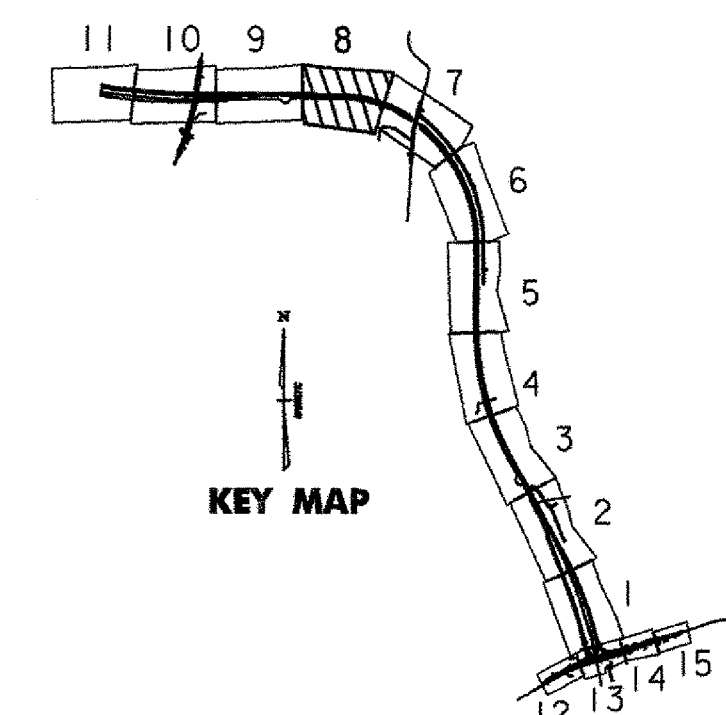
DURABLE 150 WHITE LINE, THERMOPLASTIC
 STA. NB 8+500.0 TO 8+840.0, SOLID LT. & RT.
 STA. NB 8+500.0 TO 8+840.0, DASHED LT.

DURABLE 150 YELLOW LINE, THERMOPLASTIC
 STA. NB 8+500.0 TO 8+840.0, DOUBLE SOLID C

LOCATION	TYPE
STA. NB 8+500.0 TO 8+527.0, LT.	SHOULDER
STA. NB 8+500.0 TO 8+527.0, RT.	SHOULDER
STA. NB 8+500.0 TO 8+527.0, C	CENTERLINE
STA. NB 8+700.0 TO 8+840.0, LT.	SHOULDER
STA. NB 8+700.0 TO 8+840.0, RT.	SHOULDER
STA. NB 8+700.0 TO 8+840.0, C	CENTERLINE



- SIGN & DELINEATOR LEGEND**
- N = NEW
 - R = REMOVE
 - R&S = REMOVE & SALVAGE
 - S = SALVAGE SIGN
 - RET = RETAIN
 - B-B = BACK TO BACK
 - ① = RETURN TO TOWN OF BENNINGTON
 - = TYPE I (WHITE)
 - = TYPE I (AMBER)
 - /○ = TYPE I (WHITE W/REF PLAQUE)
 - /● = TYPE II
 - /○/○ = TYPE III (WHITE)
 - /○/● = TYPE III (AMBER)
 - * = MATCH EXISTING CONDITIONS



NOTE: ALL DIMENSIONS, NOTES, AND CALLOUTS ARE IN MILLIMETERS (mm) EXCEPT WHERE NOTED

VERMONT AGENCY OF TRANSPORTATION	
PROJECT NAME: BENNINGTON	PROJECT NUMBER: AC NH 019-1(51)
FILE NAME: ...\\plot files\zd307c\tx\st-sgn.ppf	PLOT DATE: 1/30/2009
DESIGN SUPERVISOR: GREG EDWARDS	DRAWN BY: STANTEC
DESIGNED BY: MARC FOISY	CHECKED BY: GARY SANTY
SIGNS AND MARKINGS SP-08	SHEET 116 OF 367

V:\953\active\19530002\tr\consortium\drawing\contract\plot_files\zd307c\tx\st-sgn.ppf