

DURABLE 150 WHITE LINE, THERMOPLASTIC
 STA. A 1+400.0 TO NB 6+740.0, SOLID LT.
 STA. D 1+410.0 TO NB 6+740.0, SOLID RT.
 STA. NB 6+574.2 TO NB 6+740.0, DASHED RT.

DURABLE 150 YELLOW LINE, THERMOPLASTIC
 STA. A 1+400.0 TO A 1+599.2, SOLID RT.
 STA. D 1+410.0 TO NB 6+574.2, SOLID LT.
 STA. NB 6+574.2 TO NB 6+734.0, DOUBLE SOLID C
 STA. NB 6+574.2 TO NB 6+734.0, DOUBLE SOLID LT. TO C
 STA. NB 6+734.0 TO NB 6+740.0, DOUBLE SOLID C

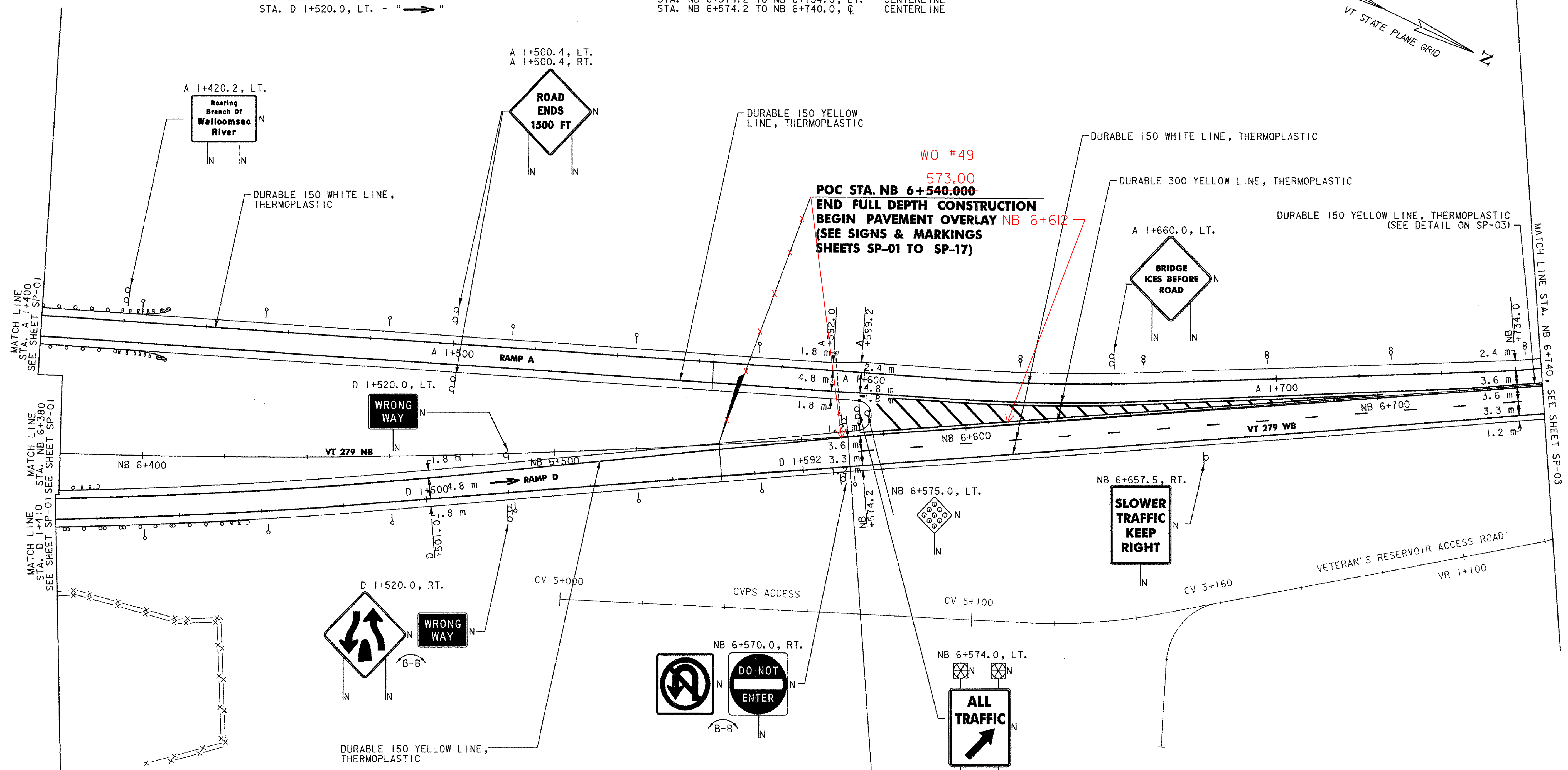
DURABLE LETTER OR SYMBOL, THERMOPLASTIC
 STA. D 1+520.0, LT. - " → "

DURABLE 300 YELLOW LINE, THERMOPLASTIC
 STA. NB 6+574.2 TO NB 6+734.0, DIAGONALS

MILLED RUMBLE STRIPS
 LOCATION TYPE
 STA. NB 6+574.2 TO NB 6+740.0, LT. SHOULDER
 STA. NB 6+574.2 TO NB 6+740.0, RT. SHOULDER
 STA. NB 6+574.2 TO NB 6+734.0, LT. CENTERLINE
 STA. NB 6+574.2 TO NB 6+740.0, C CENTERLINE

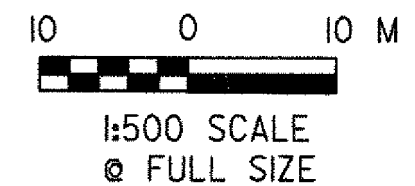
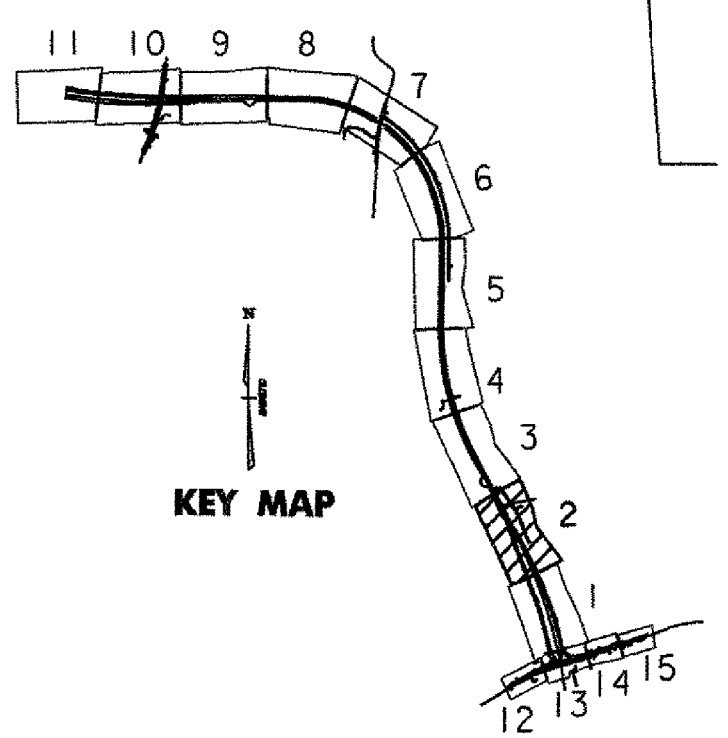
FLASHING BEACON - GROUND MOUNTED
 NB 6+574.0, LT. (2)
 FOR FURTHER DETAILS ON LIGHTING,
 SEE LIGHTING PLAN SHEET LP-02

DELINEATORS W/STEEL POSTS
 AS SHOWN-18 (FOR DETAILS,
 SEE VTrans STD. E-197)



SIGN & DELINEATOR LEGEND

N	= NEW
R	= REMOVE
R&S	= REMOVE & SALVAGE
S	= SALVAGE SIGN
RET	= RETAIN
(B-B)	= BACK TO BACK
⊙	= RETURN TO TOWN OF BENNINGTON
⊙	= TYPE I (WHITE)
⊙	= TYPE I (AMBER)
⊙	= TYPE I (WHITE W/REF PLAQUE)
⊙	= TYPE II
⊙	= TYPE III (WHITE)
⊙	= TYPE III (AMBER)
*	= MATCH EXISTING CONDITIONS



NOTE: 1) FOR STRIPING DETAILS AT THE GORES,
 SEE VTrans STANDARDS E-191 & E-192

NOTE:
 1. REFER TO LP-02 FOR FLASHING BEACON CONDUIT AND POWER DETAILS.
 2. ALL DIMENSIONS, NOTES, AND CALLOUTS ARE IN MILLIMETERS (mm) EXCEPT WHERE NOTED

VERMONT AGENCY OF TRANSPORTATION



PROJECT NAME: BENNINGTON
 PROJECT NUMBER: AC NH 019-(151)
 FILE NAME: ...plot files\vd307c1tx.t.sgn.p1f PLOT DATE: 1/30/2009
 DESIGN SUPERVISOR: GREG EDWARDS DRAWN BY: STANTEC
 DESIGNED BY: MARC FOISY CHECKED BY: GARY SANTY
 SIGNS AND MARKINGS SP-02 SHEET 110 OF 367

I:\VTrans\2009\19-151\19-151.dwg