



TEMPORARY EROSION MATTING (ON SLOPES)
 STA. A 1+400.0, LT. - STA. A 1+600.0, LT.
 STA. D 1+410.0, RT. - STA. D 1+572.0, RT.

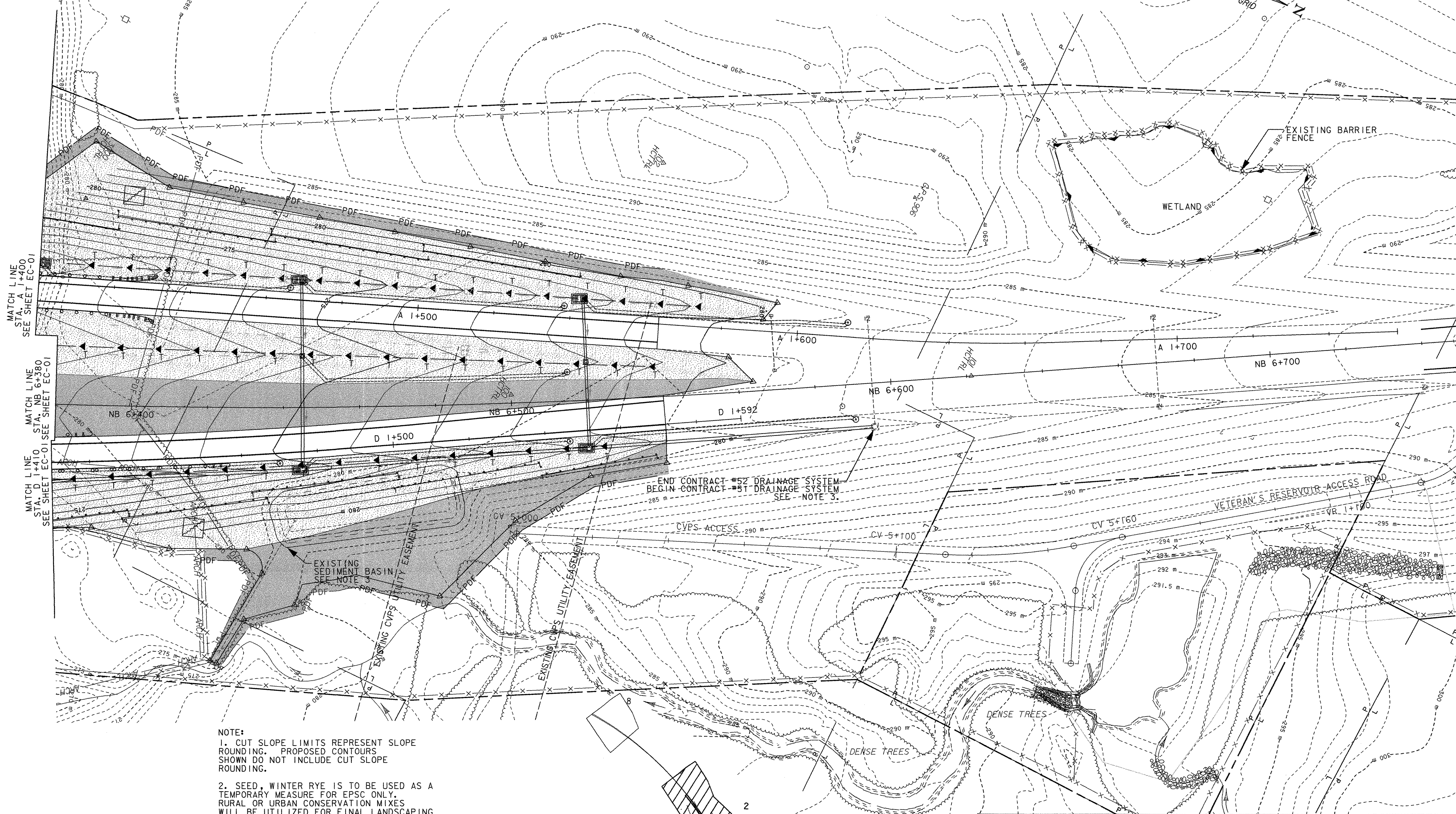
SEED, WINTER RYE
 STA. A 1+400.0, LT. - STA. A 1+594.5, LT.
 STA. D 1+410.0, RT. - STA. D 1+571.5, RT.
 STA. NB 6+380.0, C - STA. NB 6+564.0, LT.

GEOTEXTILE FOR SILT FENCE
 STA. A 1+400.0, 17.0m LT. - STA. A 1+542.0, 11.0m LT.
 STA. D 1+410.0, 15.0m RT. - STA. D 1+569.0, 8.0m RT.

TEMPORARY EROSION MATTING (IN ROADSIDE DITCHES)
 STA. A 1+400.0, LT. - STA. A 1+600.0, LT.
 STA. NB 6+380.0, LT. - STA. NB 6+574.0, LT.
 STA. D 1+410.0, RT. - STA. D 1+572.0, RT.

HAY MULCH
 STA. A 1+400.0, LT. - STA. A 1+594.5, LT.
 STA. D 1+410.0, RT. - STA. D 1+571.5, RT.
 STA. NB 6+380.0, C - STA. NB 6+564.0, LT.

TEMPORARY STONE CHECK DAM, TYPE I
 STA. A 1+410.0, 5.2m LT. - STA. A 1+570.0, 5.2m LT.
 STA. D 1+410.0, 4.0m RT. - STA. D 1+560.0, 4.0m RT.
 STA. A 1+410.0, 5.4m RT. - STA. A 1+555.0, 4.6m RT.

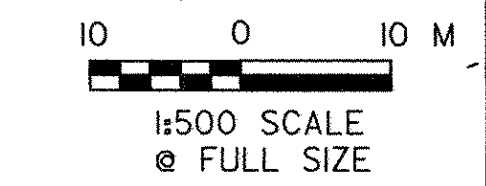
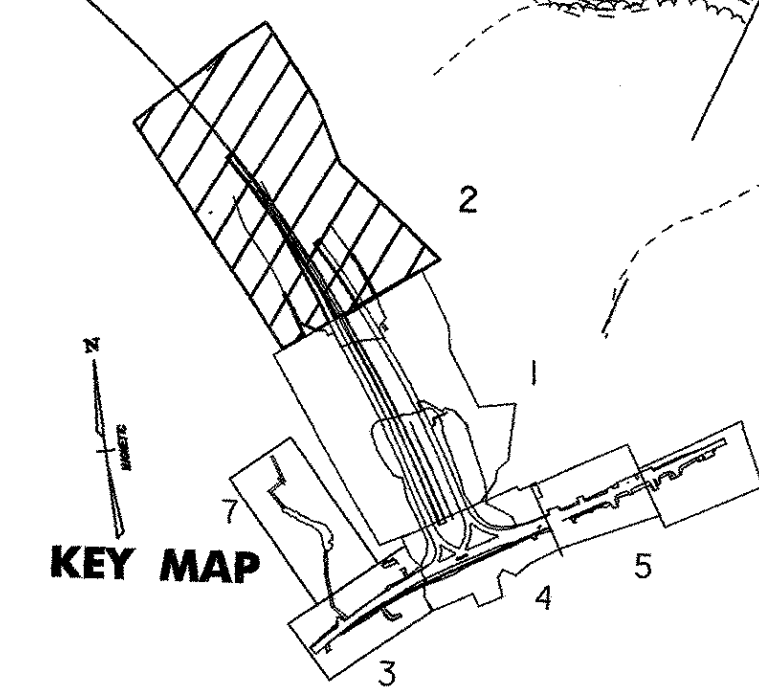


MATCH LINE
 STA. A 1+400
 SEE SHEET EC-01


MATCH LINE
 STA. NB 6+380
 SEE SHEET EC-01

MATCH LINE
 STA. D 1+410
 SEE SHEET EC-01

- NOTE:
1. CUT SLOPE LIMITS REPRESENT SLOPE ROUNDING. PROPOSED CONTOURS SHOWN DO NOT INCLUDE CUT SLOPE ROUNDING.
 2. SEED, WINTER RYE IS TO BE USED AS A TEMPORARY MEASURE FOR EPSC ONLY. RURAL OR URBAN CONSERVATION MIXES WILL BE UTILIZED FOR FINAL LANDSCAPING APPLICATIONS. SEE TYPICAL SECTION TS-05 FOR APPLICATION RATES.
 3. EXISTING SEDIMENT BASIN CONSTRUCTED UNDER AC NH 019-1 (52) EROSION PREVENTION AND SEDIMENT CONTROL. SEDIMENT BASIN SHALL REMAIN OPERATIONAL UNTIL EARTH DISTURBANCE FOR AC NH 019-1 (52) HAS BEEN PERMANENTLY STABILIZED AND DRAINAGE SYSTEM FOR THIS PROJECT HAS BEEN COMPLETED AND CONNECTED TO THE AC NH 019-1 (52) DRAINAGE SYSTEM.



VERMONT AGENCY OF TRANSPORTATION



PROJECT NAME: BENNINGTON	PROJECT NUMBER: AC NH 019-1(51)
FILE NAME: ...zd307clero-plans.500.ptf	PLOT DATE: 2/3/2009
DESIGN SUPERVISOR: GREG EDWARDS	DRAWN BY: STANTEC
DESIGNED BY: MARC FOISY	CHECKED BY: GARY SANTY
EROSION CONTROL PLAN EC-02	SHEET 91 OF 367

V:\953\active\953\0002\tr\anspor\station\drawing\contract\N\plot_files\zd307clero-plans.500.ptf