

TEMPORARY EROSION MATTING (ON SLOPES)
 STA. NB 6+070.0 - STA. NB 6+221.5, LT.
 STA. NB 6+320.5 - STA. NB 6+380.0, C
 STA. A 1+100.0 - STA. A 1+256.5, LT.
 STA. A 1+381.0 - STA. A 1+400.0, LT.
 STA. D 1+100.0 - STA. D 1+244.5, RT.
 STA. D 1+344.0 - STA. D 1+410.0, RT.

TEMPORARY EROSION MATTING (IN DITCHES)
 STA. D 1+100.0 - STA. D 1+220.5, RT.
 STA. D 1+100.0 - STA. D 1+250.5, LT.
 STA. A 1+100.0 - STA. A 1+253.5, RT.
 STA. D 1+265.0 - STA. D 1+296.3, LT.

EXCAVATED DROP INLET PROTECTION
 STA. A 1+400.0, 5.3m LT.
 STA. A 1+396.0, 15.5m RT.
 STA. D 1+140.0, 10.0m LT.
 STA. D 1+180.0, 10.0m LT.
 STA. D 1+400.0, 4.2m RT.

GEOTEXTILE FOR SILT FENCE
 STA. A 1+112.5, 22.5m LT. - STA. A 1+171.5, 13.5m LT.
 STA. A 1+170.5, 33.0m LT. - STA. A 1+201.0, 24.5m LT.
 STA. A 1+203.0, 35.0m LT. - STA. A 1+239.5, 24.5m LT.
 STA. A 1+392.5, 19.5m LT. - STA. A 1+400.0, 17.0m LT.
 STA. D 1+108.5, 6.5m RT. - STA. D 1+135.0, 3.0m RT.
 STA. D 1+148.5, 13.0m RT. - STA. D 1+228.0, 9.0m RT.
 STA. D 1+148.5, 13.0m RT. - STA. D 1+214.8, 17.7m RT.
 STA. D 1+214.8, 17.7m RT. - STA. D 1+228.0, 9.0m RT.
 STA. D 1+391.5, 17.0m RT. - STA. D 1+410.0, 15.0m RT.

GEOTEXTILE FOR SILT FENCE, WOVEN WIRE REINFORCED
 STA. NB 6+220.5, 57.5m LT. - STA. NB 6+229.5, 22.5m RT.
 STA. NB 6+320.4, 13.8m RT. - STA. NB 6+332.4, 14.8m LT.
 STA. A 1+356.3, 18.2m RT. - A 1+360.2, 44.0m LT.
 STA. D 1+344.8, 26.1m RT. - D 1+352.8, 4.35m LT.

SPECIAL PROVISION (GRASS OUTLET SEDIMENT TRAP)
 STA. A 1+214.5, 16.5m RT.

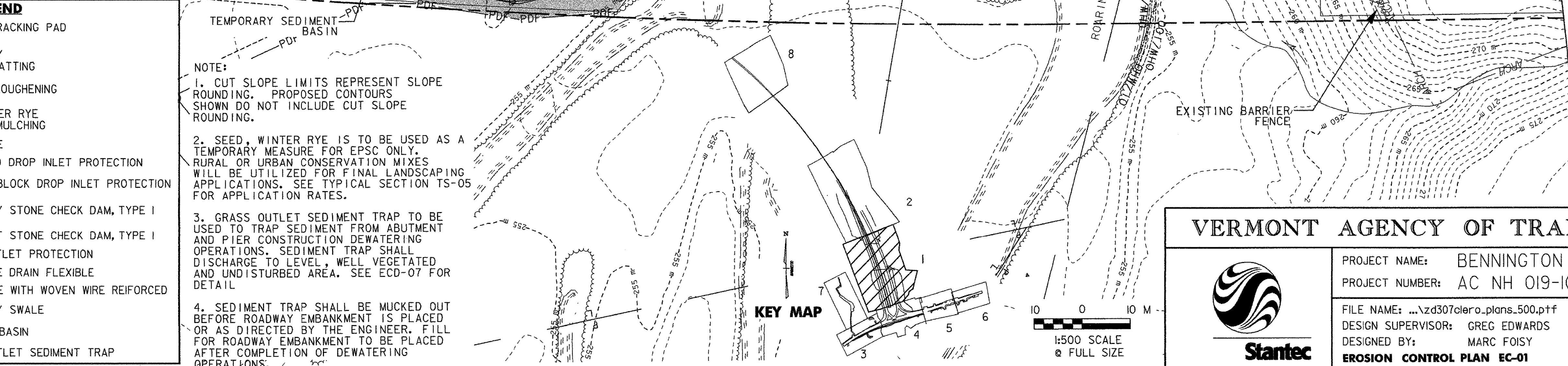
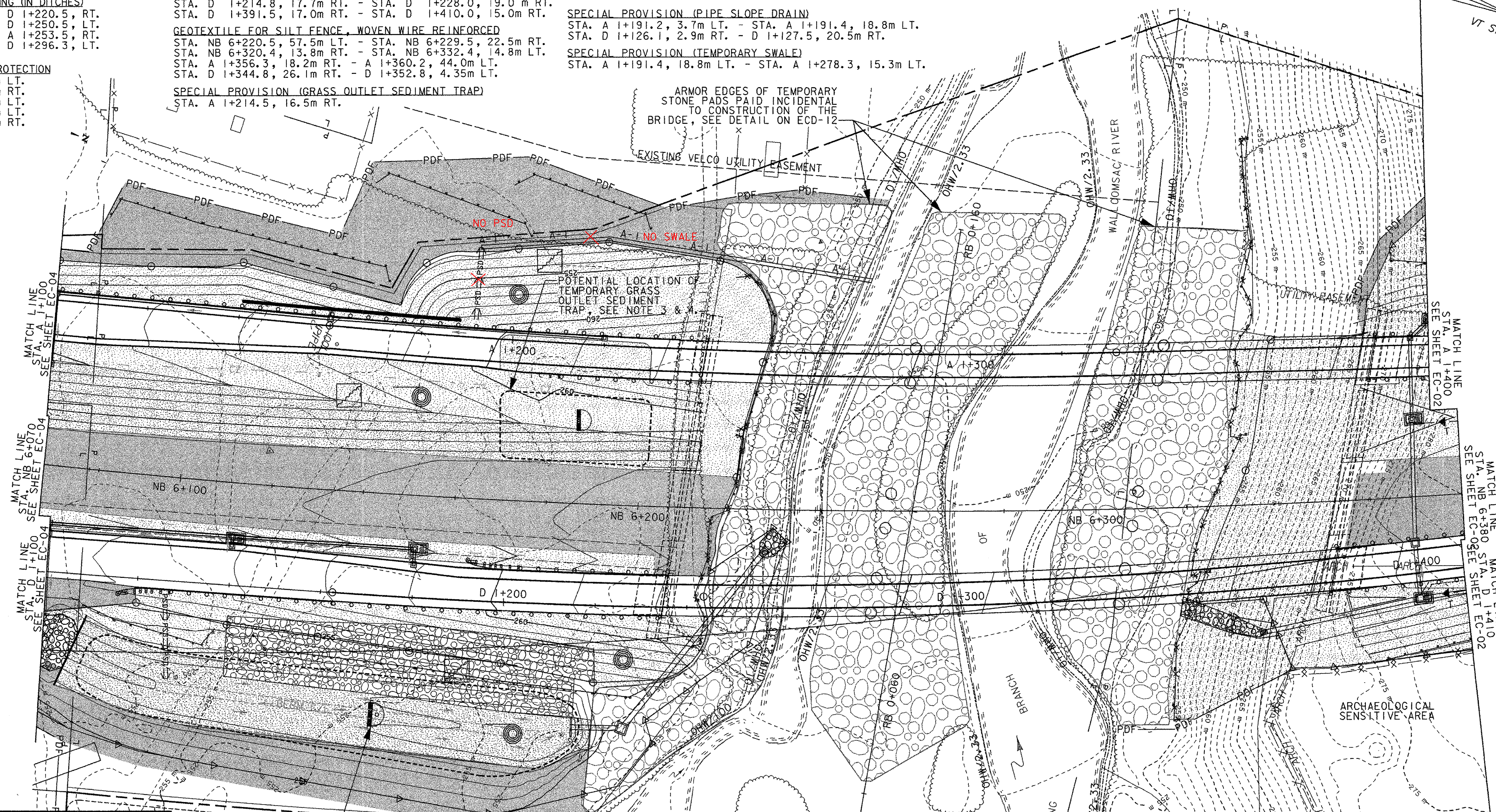
SEED, WINTER RYE
 STA. D 1+100.0 - STA. D 1+220.0, RT.
 STA. D 1+100.0 - STA. D 1+244.5, RT.
 STA. NB 6+070.0 - STA. NB 6+219.0, C
 STA. NB 6+354.0 - STA. NB 6+380.0, C
 STA. A 1+100.0 - STA. A 1+300.0, LT.
 STA. A 1+384.0 - STA. A 1+400.0, LT.
 STA. D 1+370.0 - STA. D 1+410.0, RT.

HAY MULCH
 STA. D 1+100.0 - STA. D 1+220.0, RT.
 STA. D 1+100.0 - STA. D 1+244.5, RT.
 STA. NB 6+070.0 - STA. NB 6+219.0, C
 STA. NB 6+354.0 - STA. NB 6+380.0, C
 STA. A 1+100.0 - STA. A 1+300.0, LT.
 STA. A 1+384.0 - STA. A 1+400.0, LT.
 STA. D 1+370.0 - STA. D 1+410.0, RT.

SPECIAL PROVISIONS
TEMPORARY SEDIMENT BASIN
 STA. NB 6+080.0 - NB 6+190.0, RT.

SPECIAL PROVISION (PIPE SLOPE DRAIN)
 STA. A 1+191.2, 3.7m LT. - STA. A 1+191.4, 18.8m LT.
 STA. D 1+126.1, 2.9m RT. - D 1+127.5, 20.5m RT.

SPECIAL PROVISION (TEMPORARY SWALE)
 STA. A 1+191.4, 18.8m LT. - STA. A 1+278.3, 15.3m LT.



LEGEND

- VEHICLE TRACKING PAD
- TEMPORARY EROSION MATTING
- SURFACE ROUGHENING
- SEED, WINTER RYE AND HAY MULCHING
- SILT FENCE
- EXCAVATED DROP INLET PROTECTION
- STONE & BLOCK DROP INLET PROTECTION
- TEMPORARY STONE CHECK DAM, TYPE I
- PERMANENT STONE CHECK DAM, TYPE I
- STONE OUTLET PROTECTION
- PIPE SLOPE DRAIN FLEXIBLE
- SILT FENCE WITH WOVEN WIRE REINFORCED
- TEMPORARY SWALE
- SEDIMENT BASIN
- GRASS OUTLET SEDIMENT TRAP

NOTE:

- CUT SLOPE LIMITS REPRESENT SLOPE ROUNDING. PROPOSED CONTOURS SHOWN DO NOT INCLUDE CUT SLOPE ROUNDING.
- SEED, WINTER RYE IS TO BE USED AS A TEMPORARY MEASURE FOR EPSC ONLY. RURAL OR URBAN CONSERVATION MIXES WILL BE UTILIZED FOR FINAL LANDSCAPING APPLICATIONS. SEE TYPICAL SECTION TS-05 FOR APPLICATION RATES.
- GRASS OUTLET SEDIMENT TRAP TO BE USED TO TRAP SEDIMENT FROM ABUTMENT AND PIER CONSTRUCTION DEWATERING OPERATIONS. SEDIMENT TRAP SHALL DISCHARGE TO LEVEL, WELL VEGETATED AND UNDISTURBED AREA. SEE ECD-07 FOR DETAIL.
- SEDIMENT TRAP SHALL BE MUCKED OUT BEFORE ROADWAY EMBANKMENT IS PLACED OR AS DIRECTED BY THE ENGINEER. FILL FOR ROADWAY EMBANKMENT TO BE PLACED AFTER COMPLETION OF DEWATERING OPERATIONS.

VERMONT AGENCY OF TRANSPORTATION

PROJECT NAME: BENNINGTON
 PROJECT NUMBER: AC NH 019-(K51)

FILE NAME: ...vd307clero_plans_500.pft
 DESIGN SUPERVISOR: GREG EDWARDS
 DESIGNED BY: MARC FOISY
EROSION CONTROL PLAN EC-01

PLOT DATE: 2/27/2009
 DRAWN BY: STANTEC
 CHECKED BY: GARY SANTY
 SHEET 90 OF 367

V:\1953\get\1953\0002\FR\onspdr\101\on\vd307clero_plans_500.pft