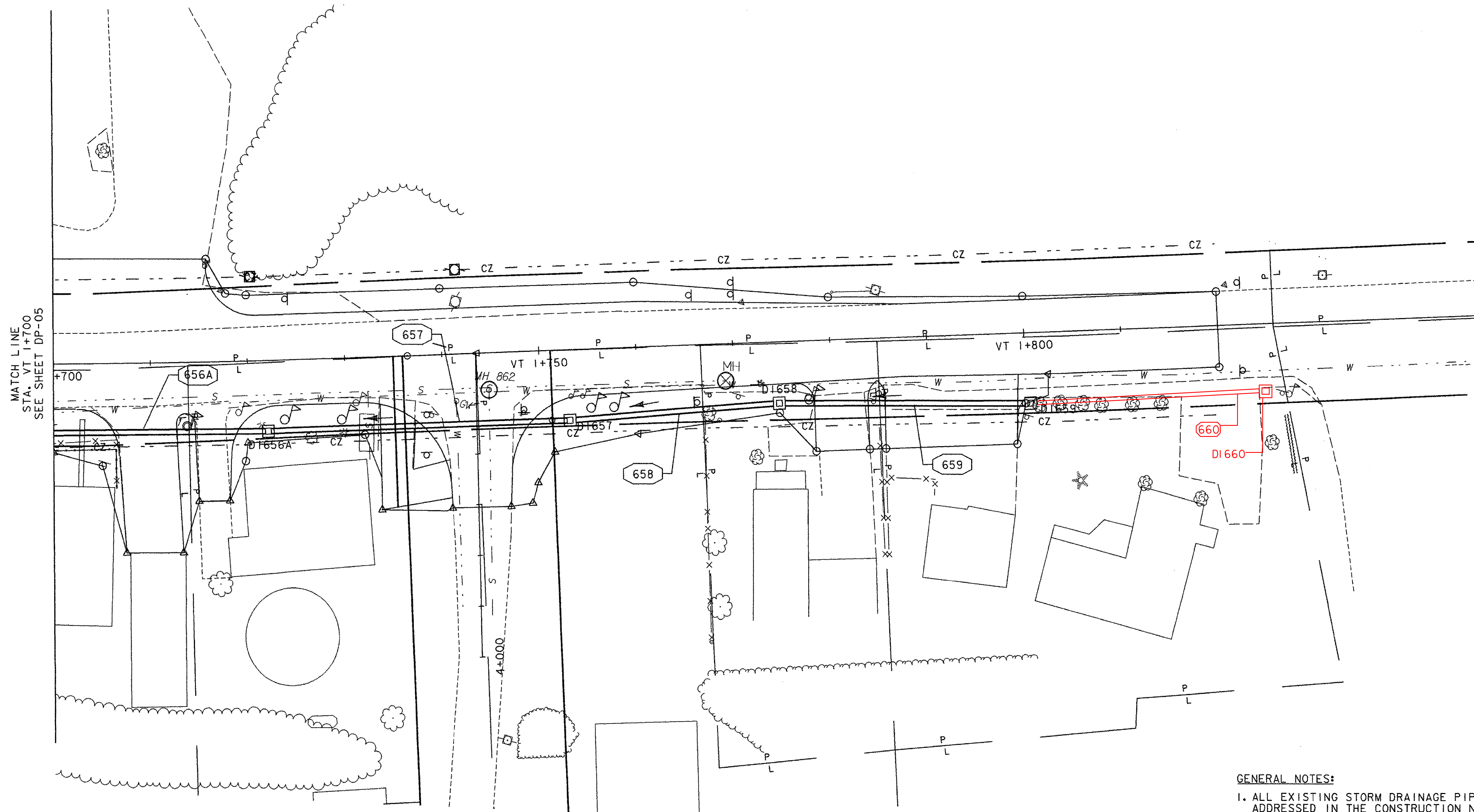
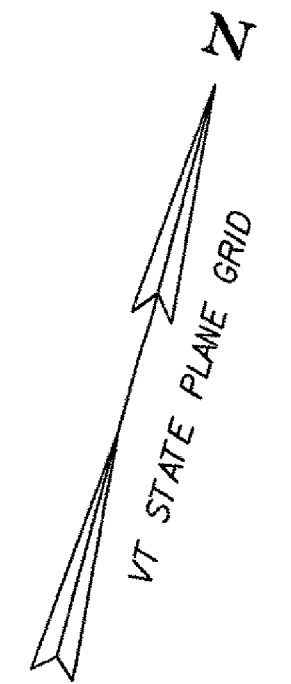


NEW DRAINAGE PIPES		
PIPE #	LOCATION	COMMENTS
657	VT 1+722.0 RT - VT 1+753.0 RT	450 X 30.5 m PIPE OPTION 4
658	VT 1+753.0 RT - VT 1+775.0 RT	450 X 20.4 m PIPE OPTION 4
659	VT 1+775.0 RT - VT 1+800.5 RT	450 X 24.7 m PIPE OPTION 4
660	VT 1+800.5 RT - VT 1+823.5 RT	450 x 23.5m PIPE OPTION 4

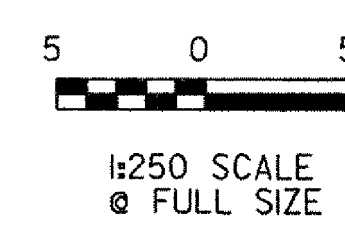
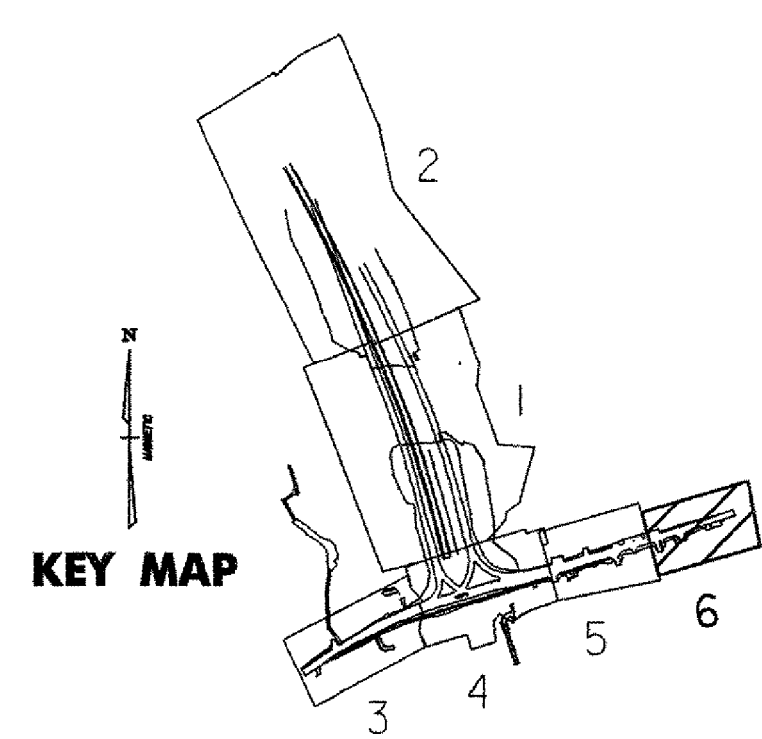
NEW DRAINAGE STRUCTURES		
STRUCTURE #	LOCATION	COMMENTS
D1656A	VT 1+722.0 RT	TYPE A GRATE
D1657	VT 1+753.0 RT	TYPE A GRATE
D1658	VT 1+775.0 RT	TYPE A GRATE
D1659	VT 1+800.5 RT	TYPE A GRATE
D1660	VT 1+823.5 RT	TYPE A GRATE



MATCH LINE  
STA. VT 1+700  
SEE SHEET DP-05

**GENERAL NOTES:**

- ALL EXISTING STORM DRAINAGE PIPES AND STRUCTURES NOT ADDRESSED IN THE CONSTRUCTION NOTES, FOUND TO BE COMPLETELY WITHIN THE PROPOSED ROADWAY, ARE TO BE REMOVED OR ABANDONED AS DIRECTED BY THE ENGINEER. ALL PIPES TO BE ABANDONED SHALL BE FILLED WITH AND PAID FOR AS CONCRETE CLASS B.
- EXISTING DRAINAGE PIPES FROM OFFSITE SYSTEMS ARE TO BE TIED INTO THE PROPOSED DRAINAGE SYSTEM AS SHOWN. ANY EXISTING DRAINAGE PIPES ENCOUNTERED DURING CONSTRUCTION WHICH ARE NOT SHOWN ON THE PLANS BUT WHICH DO ORIGINATE FROM OTHER OFFSITE SYSTEMS ARE TO BE CONNECTED TO THE PROPOSED DRAINAGE SYSTEM AS DIRECTED BY THE ENGINEER. PAYMENT WILL BE MADE AS EXTRA WORK IN ACCORDANCE WITH SUBSECTION 109.06 OF THE VTRANS SPECIFICATIONS.



<b>VERMONT AGENCY OF TRANSPORTATION</b>	
	PROJECT NAME: BENNINGTON
	PROJECT NUMBER: AC NH 019-1(51)
FILE NAME: ...z307cldr_n_plans_250.pxf	PLOT DATE: 1/30/2009
DESIGN SUPERVISOR: GREG EDWARDS	DRAWN BY: STANTEC
DESIGNED BY: MARC FOISY	CHECKED BY: GARY SANTY
<b>DRAINAGE PLAN DP-06</b>	SHEET 79 OF 367

V:\953\active\953002\transportation\drainage\contract\plot\_files\z307cldr\_n\_plans\_250.pxf