

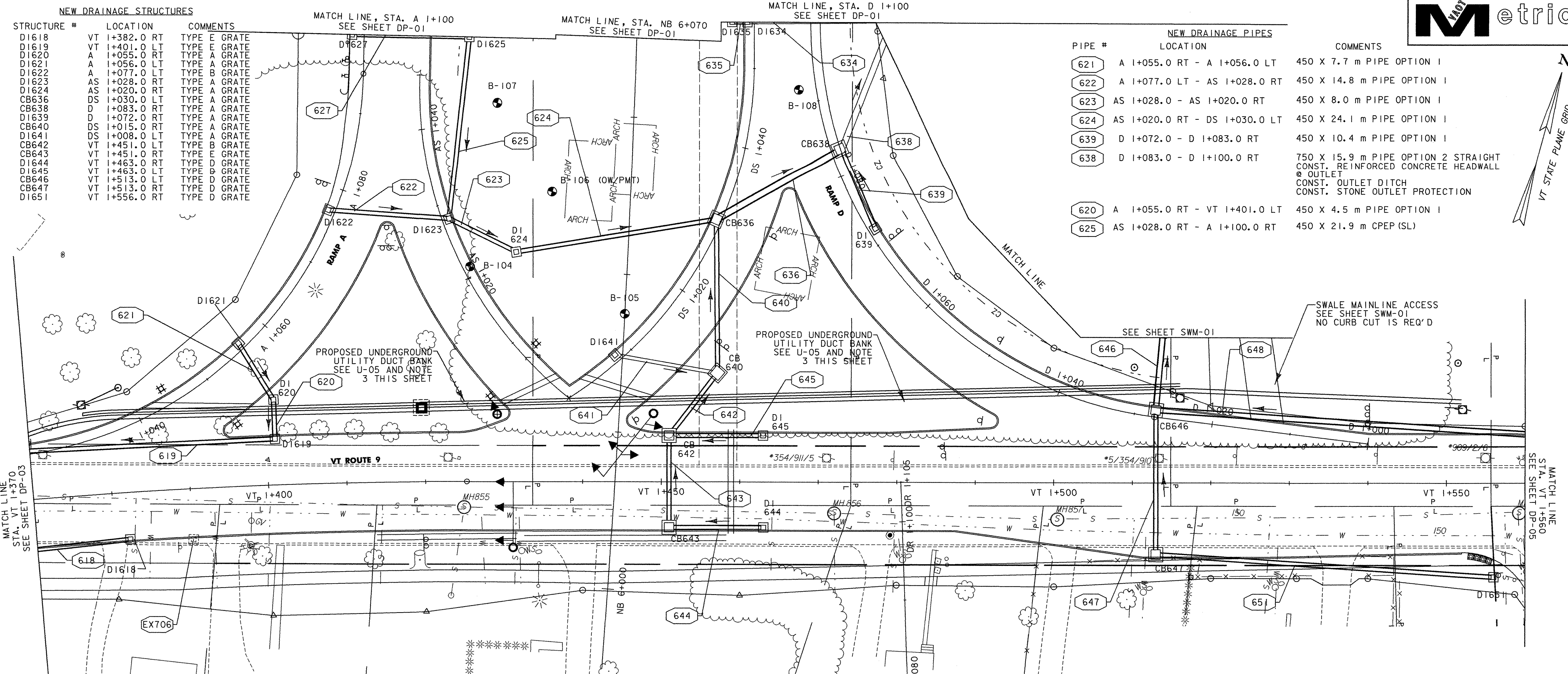


NEW DRAINAGE STRUCTURES

STRUCTURE #	LOCATION	COMMENTS
D1618	VT I+382.0 RT	TYPE E GRATE
D1619	VT I+401.0 LT	TYPE E GRATE
D1620	A I+055.0 RT	TYPE A GRATE
D1621	A I+056.0 LT	TYPE A GRATE
D1622	A I+077.0 LT	TYPE B GRATE
D1623	AS I+028.0 RT	TYPE A GRATE
D1624	AS I+020.0 RT	TYPE A GRATE
CB636	DS I+030.0 LT	TYPE A GRATE
CB638	D I+083.0 RT	TYPE A GRATE
D1639	D I+072.0 RT	TYPE A GRATE
CB640	DS I+015.0 RT	TYPE A GRATE
D1641	DS I+008.0 LT	TYPE A GRATE
CB642	VT I+451.0 RT	TYPE B GRATE
CB643	VT I+451.0 RT	TYPE E GRATE
D1644	VT I+463.0 RT	TYPE D GRATE
D1645	VT I+463.0 LT	TYPE D GRATE
CB646	VT I+513.0 RT	TYPE D GRATE
CB647	VT I+513.0 RT	TYPE D GRATE
D1651	VT I+556.0 RT	TYPE D GRATE

NEW DRAINAGE PIPES

PIPE #	LOCATION	COMMENTS
621	A I+055.0 RT - A I+056.0 LT	450 X 7.7 m PIPE OPTION 1
622	A I+077.0 LT - AS I+028.0 RT	450 X 14.8 m PIPE OPTION 1
623	AS I+028.0 - AS I+020.0 RT	450 X 8.0 m PIPE OPTION 1
624	AS I+020.0 RT - DS I+030.0 LT	450 X 24.1 m PIPE OPTION 1
639	D I+072.0 - D I+083.0 RT	450 X 10.4 m PIPE OPTION 1
638	D I+083.0 - D I+100.0 RT	750 X 15.9 m PIPE OPTION 2 STRAIGHT CONST. REINFORCED CONCRETE HEADWALL @ OUTLET CONST. OUTLET DITCH CONST. STONE OUTLET PROTECTION
620	A I+055.0 RT - VT I+401.0 LT	450 X 4.5 m PIPE OPTION 1
625	AS I+028.0 RT - A I+100.0 RT	450 X 21.9 m CPEP (SL)



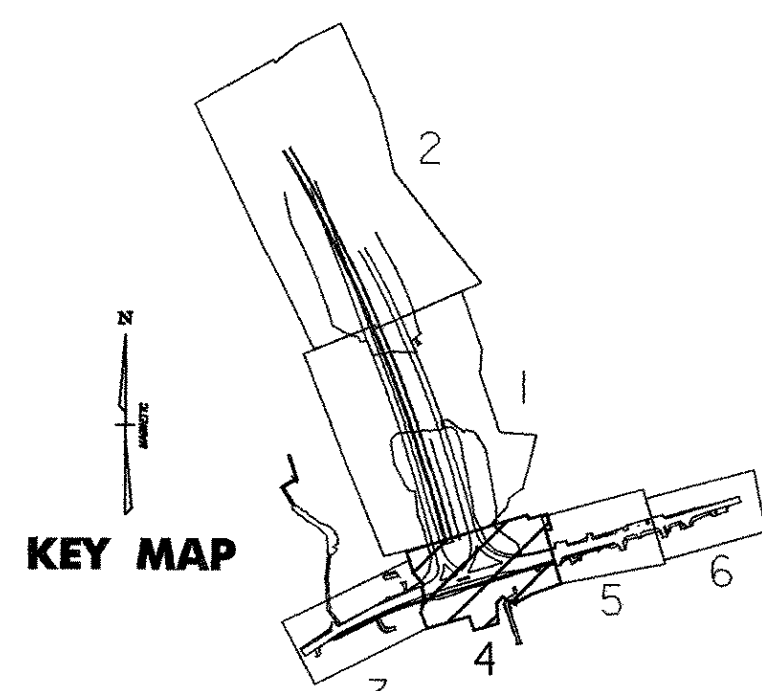
NEW DRAINAGE PIPES

PIPE #	LOCATION	COMMENTS
641	DS I+008.0 LT - DS I+015.0 RT	450 X 11.5 m PIPE OPTION 1
640	DS I+015.0 RT - DS I+030.0 LT	450 X 17.3 m PIPE OPTION 4
636	DS I+030.0 LT - D I+083.0 RT	750 X 16.1 m PIPE OPTION 4
642	VT I+451.0 LT - DS I+015.0 RT	450 X 4.4 m PIPE OPTION 1
643	VT I+451.0 LT - RT	450 X 10.5 m PIPE OPTION 1
651	VT I+513.0 - VT I+556.0 RT	450 X 42.2 m PIPE OPTION 4
644	VT I+451.0 - VT I+463.0 RT	450 X 11.1 m PIPE OPTION 1
645	VT I+451.0 - VT I+463.0 LT	450 X 11.1 m PIPE OPTION 1
647	VT I+513.0 LT-RT	450 X 17.2 m PIPE OPTION 1
646	VT I+513.0 - VT I+514.0 LT	600 X 10.3 m PIPE OPTION 2 CONST. REINFORCED CONCRETE STRAIGHT HEADWALL @ OUTLET CONST. OUTLET DITCH CONST. STONE OUTLET PROTECTION
648	VT I+513.0 - VT I+586.0 LT	600 X 72.0 m PIPE OPTION 4

EXISTING DRAINAGE

PIPE #	LOCATION	COMMENTS
EX706	VT I+390.0, RT.	REMOVE EXISTING DRAINAGE STRUCTURE REMOVE ASSOCIATED PIPES

- GENERAL NOTES:**
- ALL EXISTING STORM DRAINAGE PIPES AND STRUCTURES NOT ADDRESSED IN THE CONSTRUCTION NOTES, FOUND TO BE COMPLETELY WITHIN THE PROPOSED ROADWAY, ARE TO BE REMOVED OR ABANDONED AS DIRECTED BY THE ENGINEER. ALL PIPES TO BE ABANDONED SHALL BE FILLED WITH AND PAID FOR AS CONCRETE CLASS B.
 - EXISTING DRAINAGE PIPES FROM OFFSITE SYSTEMS ARE TO BE TIED INTO THE PROPOSED DRAINAGE SYSTEM AS SHOWN. ANY EXISTING DRAINAGE PIPES ENCOUNTERED DURING CONSTRUCTION WHICH ARE NOT SHOWN ON THE PLANS BUT WHICH DO ORIGINATE FROM OTHER OFFSITE SYSTEMS ARE TO BE CONNECTED TO THE PROPOSED DRAINAGE SYSTEM AS DIRECTED BY THE ENGINEER. PAYMENT WILL BE MADE AS EXTRA WORK IN ACCORDANCE WITH SUBSECTION 109.06 OF THE VTRANS SPECIFICATIONS.
 - DRAINAGE THAT CROSSES UNDERNEATH UTILITY CONDUIT SHALL BE INSTALLED PRIOR TO UTILITY CONDUIT.



VERMONT AGENCY OF TRANSPORTATION

PROJECT NAME: BENNINGTON
 PROJECT NUMBER: AC NH 019-I(51)

FILE NAME: ...vd307cldrn_plans_250.ppt PLOT DATE: 2/3/2009
 DESIGN SUPERVISOR: GREG EDWARDS DRAWN BY: STANTEC
 DESIGNED BY: MARC FOISY CHECKED BY: GARY SANTY
DRAINAGE PLAN DP-04 SHEET 77 OF 367

V:\953\active\9530002\VT_onspdr\action\drwng\constr\dp04\1\sheet_files\vd307cldrn_plans_250.ppt