

NEW DRAINAGE PIPES		
PIPE #	LOCATION	COMMENTS
514	D 1+475.8 LT-RT	600 X 29.0 m PIPE OPTION 1
515	A 1+469.0 LT - A 1+470.4 RT	450 X 19.3 m PIPE OPTION 1
502	D 1+475.8 RT - D 1+551.4 RT	750 X 74.5 m PIPE OPTION 2
516	D 1+551.4 RT - D 1+552.2 LT	450 X 21.8 m PIPE OPTION 1
517	A 1+552.2 LT - A 1+552.7 RT	450 X 16.0 m PIPE OPTION 1
503	D 1+551.4 RT - NB 6+595.0 RT	600 X 74.2 m PIPE OPTION 2 CONNECT TO EXISTING STRUCTURE @ NB 6+595.0 RT. (INCIDENTAL TO PIPE)

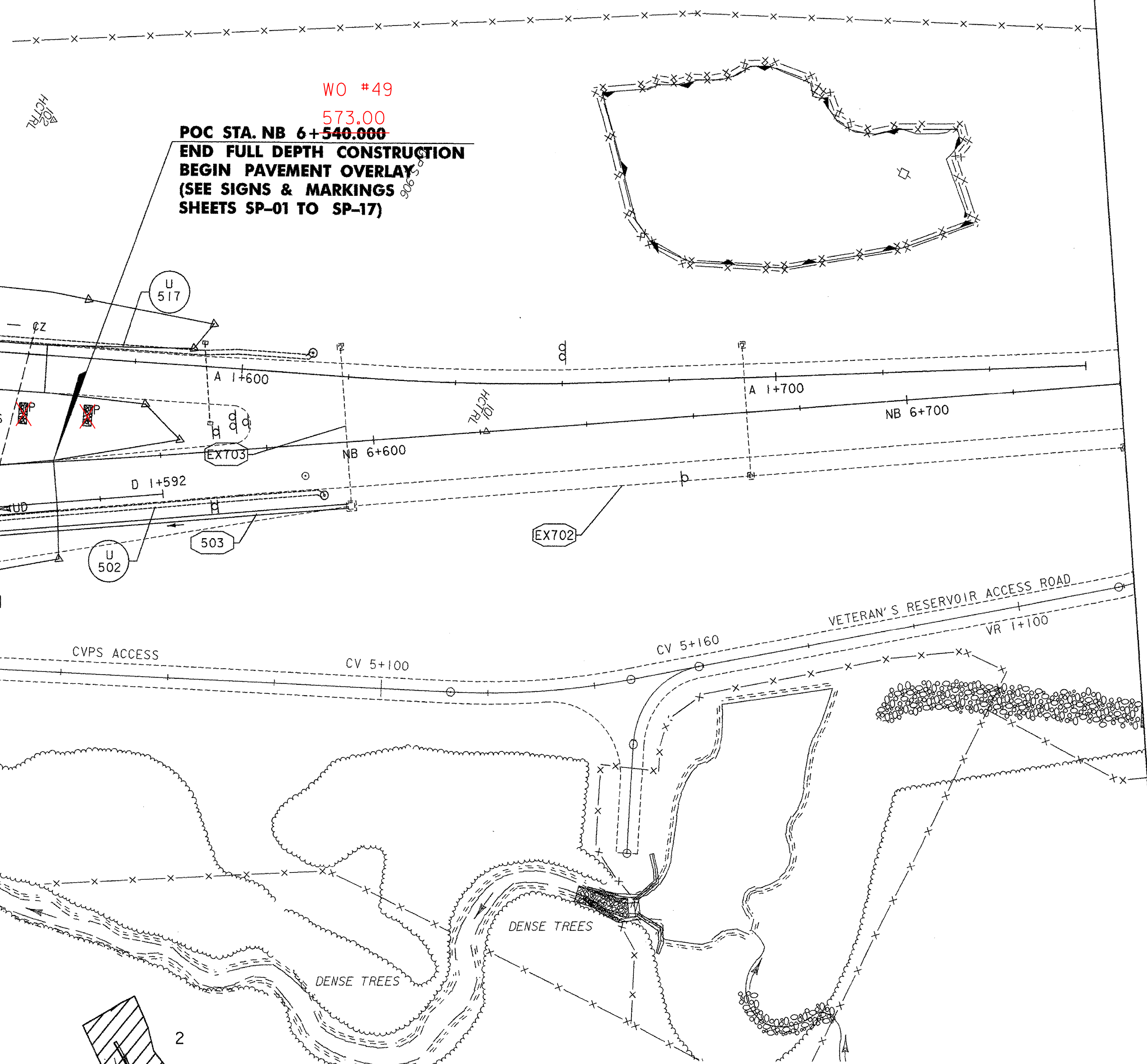
NEW DRAINAGE STRUCTURES		
STRUCTURE #	LOCATION	COMMENTS
CB501	D 1+475.8 RT	TYPE B GRATE
D1514	D 1+475.8 LT	TYPE B GRATE
D1515	A 1+469.0 LT	TYPE B GRATE
CB502	D 1+551.4 RT	TYPE B GRATE
D1516	D 1+552.2 LT	TYPE B GRATE
D1517	A 1+552.2 LT	TYPE B GRATE

~~PERMANENT STONE CHECK DAM, TYPE 1
STA. A 1+410.0, 5.4m RT. STA. A 1+555.0, 4.6m RT.
ELIMINATED PER CHANGE ORDER #37~~

UNDERDRAIN	
U 501	CONST. D 1+475.8 - D 1+550.0, RT. NEW 150 x 70.0 m UND. W/FLUSHING BASIN @ D 1+550.0, RT.
U 502	CONST. NB 6+520.0 - NB 6+590.0, RT. NEW 150 x 70.0 m UND. W/FLUSHING BASIN @ NB 6+590.0, RT.
U 514	CONST. NB 6+445.0 - NB 6+515.0, RT. NEW 150 x 70.0 m UND. W/FLUSHING BASIN @ NB 6+515.0, RT.

U 517	CONST. NB 6+520.0 - NB 6+590.0, LT. NEW 150 x 70.0 m UND. W/FLUSHING BASIN @ NB 6+590.0, LT.
U 515	CONST. A 1+469.0 - A 1+538.4, LT. NEW 150 x 70.0 m UND. W/FLUSHING BASIN @ A 1+538.4, LT.
U 513	CONST. A 1+400.0 - A 1+470.0, LT. NEW 150 x 70.0 m UND. W/FLUSHING BASIN @ A 1+470.0, LT.

EXISTING DRAINAGE PIPES		
PIPE #	LOCATION	COMMENTS
EX700	NB 6+425.2 - NB 6+440.0 RT	REMOVE EXISTING 600 PIPE AND RISER PIPE STRUCTURE (SEE NOTE 1)
EX701	NB 6+485.0 - 6+595.0 RT	REMOVE EXISTING 900 PIPE (SEE NOTE 1)
EX702	NB 6+595.0 - 6+670.0 RT	RETAIN EXISTING 600 PIPE & INLET STRUCTURE
EX703	NB 6+595.0 LT-RT	RETAIN EXISTING 450 PIPE & INLET STRUCTURE



MATCH LINE STA. A 1+400.0, SEE SHEET DP-01

MATCH LINE STA. NB 6+380, SEE SHEET DP-01

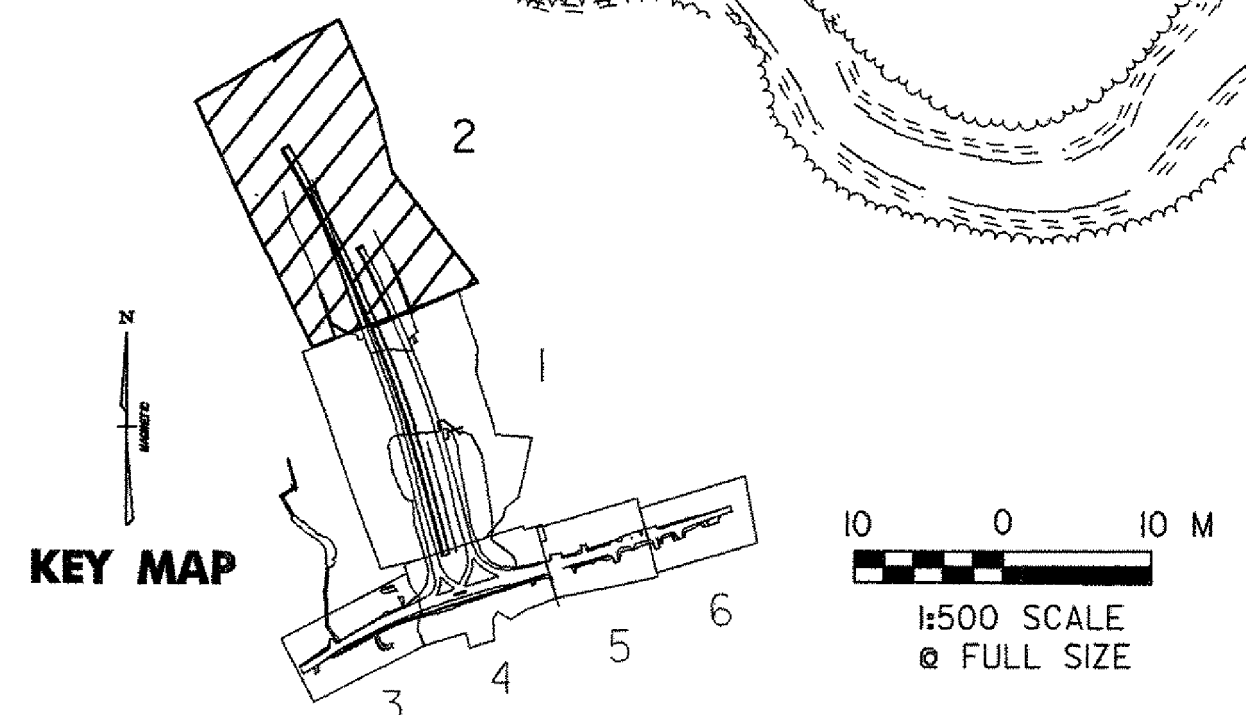
MATCH LINE STA. D 1+410, SEE SHEET DP-01

SEE SYSTEM 5 STORM WATER REVISION PLANS

WO #49
573.00
POC STA. NB 6+540.000
END FULL DEPTH CONSTRUCTION
BEGIN PAVEMENT OVERLAY
(SEE SIGNS & MARKINGS
SHEETS SP-01 TO SP-17)

NOTES:

- EXISTING SEDIMENT BASIN AND ASSOCIATED STRUCTURE AND PIPES SHALL NOT BE REMOVED UNTIL THE CONTRACTOR INSTALLS A STORMWATER CONVEYANCE METHOD THAT WILL EFFECTIVELY TRANSPORT AND TREAT STORMWATER IN AN ENVIRONMENTALLY PERMITTED MANNER OR WHEN PERMANENT DRAINAGE IS COMPLETED. FILL IN SEDIMENT BASIN IS REFLECTED IN EARTHWORK VOLUMES. PIPE AND STRUCTURE REMOVAL PAID AS TRENCH EXCAVATION.
- SEE SWM-04 FOR PERMANENT STONE CHECK DAM DETAILS.



VERMONT AGENCY OF TRANSPORTATION

PROJECT NAME: BENNINGTON
PROJECT NUMBER: AC NH 019-1(51)
FILE NAME: ...z307cldrn_plans_500.prf PLOT DATE: 2/3/2009
DESIGN SUPERVISOR: GREG EDWARDS DRAWN BY: STANTEC
DESIGNED BY: MARC FOISY CHECKED BY: GARY SANTY
DRAINAGE PLAN DP-02 SHEET 75 OF 367

V:\B53\acfive\98310002\Transportation\dr\awing\contract\plot_files\z307cldrn_plans_500.prf