

CAST-IN-PLACE CONCRETE CURB, TYPE B

STA. VT 1+560.000, 6.2m LT. - STA. VT 1+566.996, 6.0m LT.
 STA. VT 1+583.548, 5.3m LT. - STA. VT 1+607.530, 4.7m LT.
 STA. VT 1+618.835, 4.7m LT. - STA. VT 1+649.030, 4.7m LT.
 STA. VT 1+574.698, 8.5m RT. - STA. VT 1+580.133, 8.4m RT.
 STA. VT 1+584.233, 8.3m RT. - STA. VT 1+590.995, 8.2m RT.
 STA. VT 1+595.095, 8.1m RT. - STA. VT 1+639.787, 7.9m RT.

REMOVAL OF EXISTING CURB

STA. VT 1+560.000 - STA. VT 1+562.792 LT.
 STA. VT 1+568.668 - STA. VT 1+580.133 RT.
 STA. VT 1+582.182 - STA. VT 1+605.153 LT.
 STA. VT 1+634.139 - STA. VT 1+648.791 LT.
 (WITH THE EXCEPTION OF DRIVEWAY OPENINGS,
 EXIST. CONC. CURB GOES FROM VT 1+560 TO
 VT 1+640 RT & VT 1+650 LT.)

REMOVING AND RESETTING FENCE

STA. VT 1+658.4, 10.0m RT. - STA. VT 1+674.5, 9.3m RT.
 STA. VT 1+679.0, 9.1m RT. - STA. VT 1+700.0, 7.9m RT.
 BOTH FENCE LOCATIONS TO BE RESET TO JUST
 OUTSIDE OF CLEAR ZONE.

PORTLAND CEMENT CONCRETE SIDEWALK, 125mm
 STA. VT 1+569.999 - STA. VT 1+644.910 RT.
 STA. VT 1+640.000 LT. (CONNECT EXISTING
 CONCRETE WALK TO CURB)

CONSTRUCT DRIVE

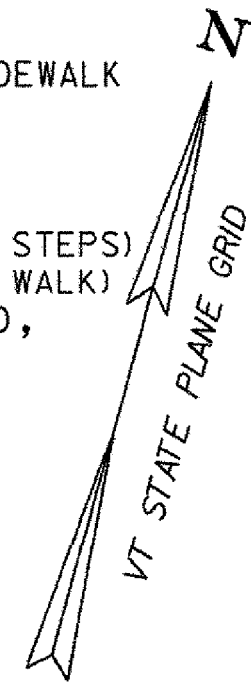
STA. VT 1+563.5, RT. (8.0m HARVARD ST.)
 STA. VT 1+574.3, LT. (15.0m PAVED)
 STA. VT 1+582.2, RT. (2.9m PAVED)
 STA. VT 1+593.0, RT. (2.9m PAVED)
 STA. VT 1+613.2, LT. (7.0m GRAVEL W/PAVED APRON)
 STA. VT 1+651.1, RT. (8.0m HICKORY HILL)
 STA. VT 1+655.0, LT. (8.0m GRAVEL W/PAVED APRON)
 STA. VT 1+677.5, RT. (5.4m GRAVEL W/PAVED APRON)
 STA. VT 1+679.1, LT. (10.2m GRAVEL W/PAVED APRON)

CONSTRUCT SIDEWALK RAMP

STA. VT 1+574.713, RT. (TYPE 1)
 STA. VT 1+580.113, RT. (TYPE 1)
 STA. VT 1+584.233, RT. (TYPE 1)
 STA. VT 1+590.995, RT. (TYPE 1)
 STA. VT 1+595.095, RT. (TYPE 1)
 STA. VT 1+639.787, RT. (TYPE 1)
 *PAID AS PORTLAND CEMENT CONCRETE SIDEWALK
 SEE CONSTRUCTION STANDARD C-3A,C3B

SOLID ROCK EXCAVATION

STA. VT 1+620.000, RT. (REMOVE CONC. STEPS)
 STA. VT 1+640.000, LT. (REMOVE CONC. WALK)
 STA. VT 1+560.000 - STA. VT 1+700.000,
 (REMOVE CONCRETE ROADWAY)



DETECTABLE WARNING SURFACES

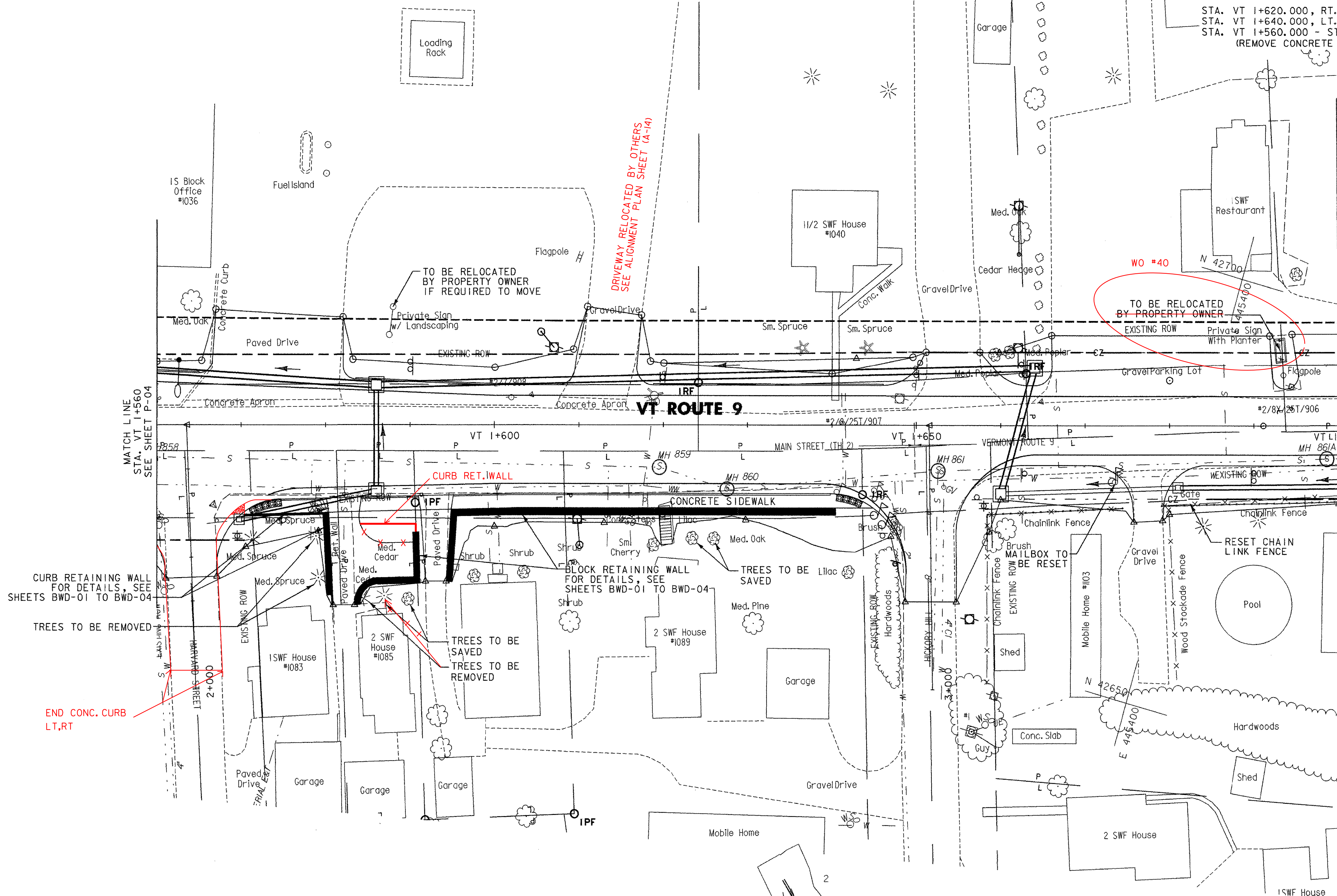
STA. VT 1+574.713, RT.
 STA. VT 1+640.597, RT.

RELOCATE MAILBOX, SINGLE SUPPORT

STA. VT 1+646.468, RT.
 STA. VT 1+673.543, RT.

RELOCATE MAILBOX, MULTI SUPPORT

STA. VT 1+645.545, RT. (5)



MATCH LINE
 STA. VT 1+560
 SEE SHEET P-04

MATCH LINE
 STA. VT 1+700
 SEE SHEET P-07

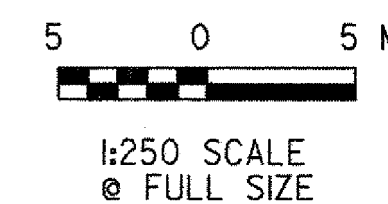
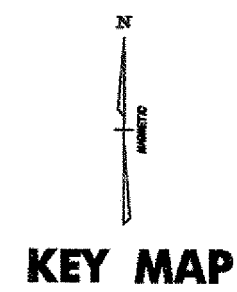
CURB RETAINING WALL
 FOR DETAILS, SEE
 SHEETS BWD-01 TO BWD-04

TREES TO BE REMOVED

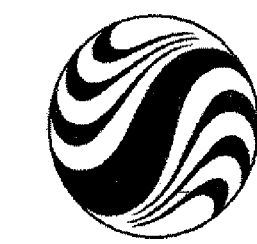
END CONC. CURB
 LT,RT

TREES TO BE
 SAVED
 TREES TO BE
 REMOVED

BLOCK RETAINING WALL
 FOR DETAILS, SEE
 SHEETS BWD-01 TO BWD-04



VERMONT AGENCY OF TRANSPORTATION



PROJECT NAME: BENNINGTON
 PROJECT NUMBER: AC NH 019-1(51)

FILE NAME: ...vzd307olgen_plans_250.pptf
 DESIGN SUPERVISOR: GREG EDWARDS
 DESIGNED BY: MARC FOISY
GENERAL PLAN P-06

PLOT DATE: 2/3/2009
 DRAWN BY: STANTEC
 CHECKED BY: GARY SANTY
 SHEET 71 OF 367