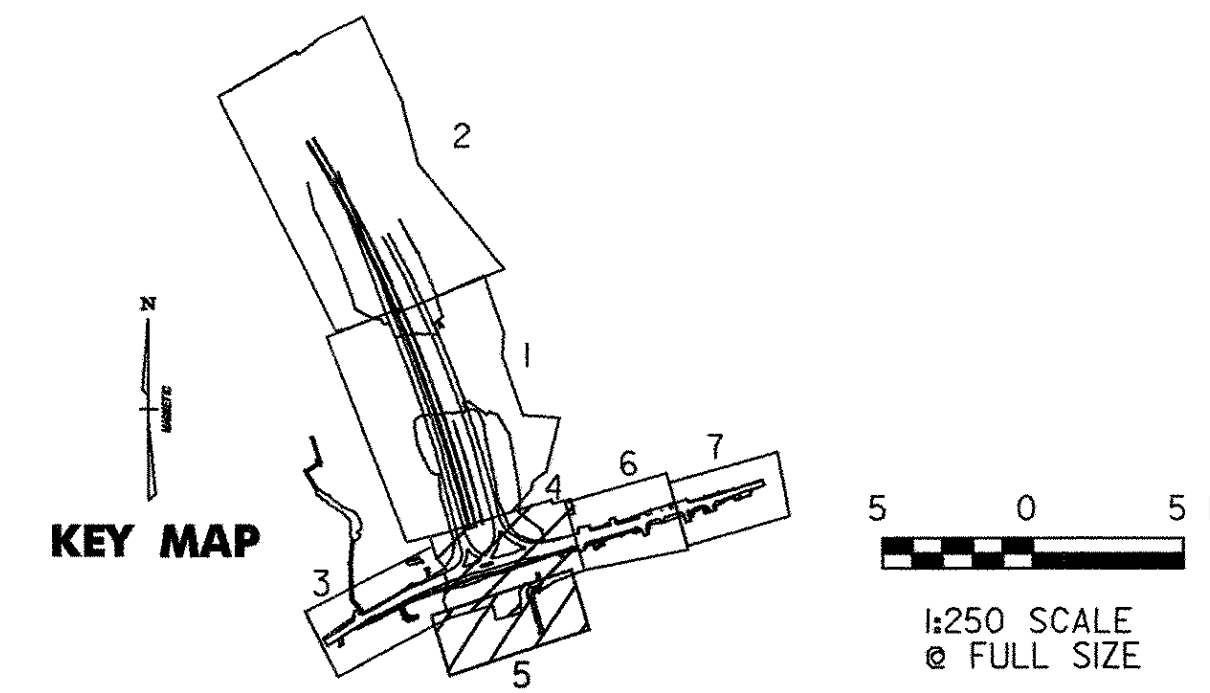
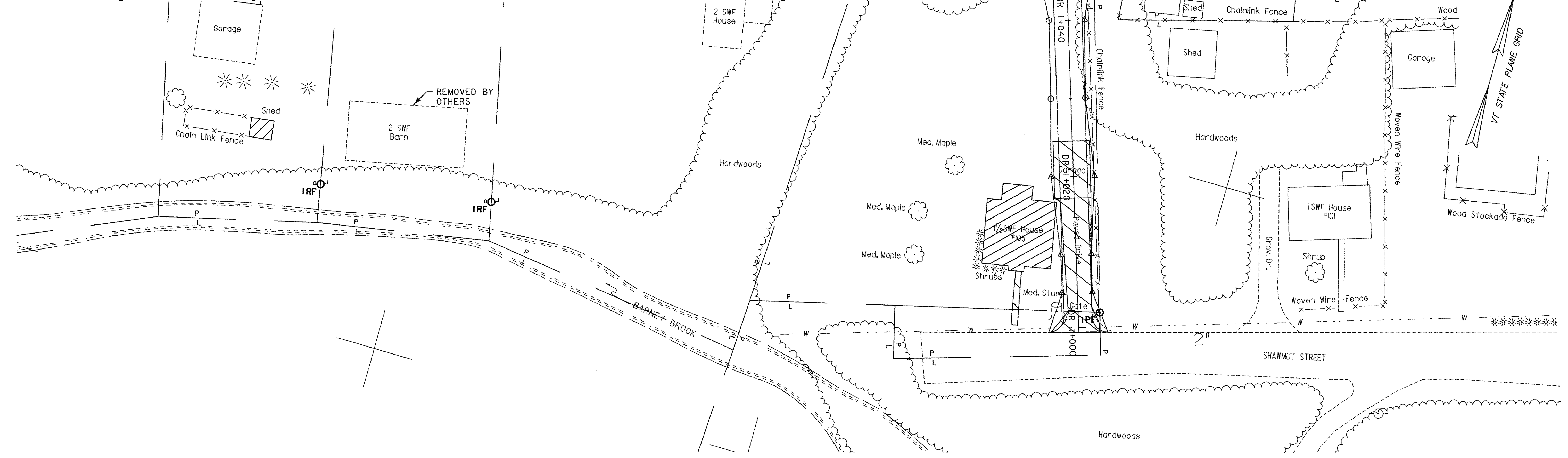


DEMOLITION AND DISPOSAL OF BUILDING
 STA. DR 1+013.4, 7.3m LT. (1/2 SWF HOUSE)
 STA. DR 1+020.9, 6.2m LT. (GARAGE)
 STA. DR 1+029.7, 104.4m LT. (SHED)
 STA. DR 1+042.4 108.2m LT. (2 SWF HOUSE)

REMOVAL OF EXISTING FENCE
 STA. DR 1+002.185, 2.7m RT. - STA. DR 1+047.465, 4.0m RT.
 STA. DR 1+029.018, 107.5m LT. - STA. DR 1+032.775, 114.0m RT. (FENCE W/SHED)

CONSTRUCT DRIVE
 STA. DR 1+000.000, C - STA. DR 1+050.000, C (PAVED)




NOTE:
 REMOVE GARAGE AND EXISTING PAVED DRIVE PRIOR TO
 REMOVAL OF DRIVE AT VT 1+500.0, RT.

GENERAL PLAN P-04 CONSTRUCTION NOTES

<p>SPECIAL PROVISION (DECOMMISSION OBSERVATION WELL) STA. VT 1+436.074, 36.7m LT. (B-106) STA. VT 1+446.333, 28.3m RT. (B-103)</p>	<p>CONSTRUCT SIDEWALK RAMP STA. VT 1+551.947, RT. (TYPE I) *PAID AS PORTLAND CEMENT CONCRETE SIDEWALK SEE CONSTRUCTION STANDARD C-3A - C3B</p>	<p>CAST-IN-PLACE CONCRETE CURB, TYPE B STA. VT 1+370.000, RT. - STA. VT 1+551.951, RT. STA. VT 1+540.167, LT. - STA. VT 1+560.000, LT.</p>	<p>REMOVING AND RESETTING FENCE STA. VT 1+503.481, RT. - STA. VT 1+518.350, RT.</p> <p>REMOVAL OF EXISTING FENCE STA. DR 1+059.000, 11.0m RT. - STA. DR 1+045.857, 12.4m RT. STA. VT 1+451.718, 12.1m LT. - STA. VT 1+462.735, 12.1m LT. STA. VT 1+497.605, 12.4 RT. - STA. VT 1+497.906, 9.8m RT. STA. VT 1+518.690, 9.8 RT. - STA. VT 1+518.350, 11.6m RT. STA. VT 1+518.690, 9.8 RT. - STA. VT 1+533.418, 9.3m RT. STA. VT 1+538.573, 9.3 RT. - STA. VT 1+543.266, 11.8m RT.</p>
<p>STEEL BEAM GUARDRAIL, GALVANIZED STA. A 1+092.225, 1.8m LT. - STA. A 1+100.000, 1.8m LT.</p> <p>ANCHOR FOR STEEL BEAM RAIL STA. A 1+094.225, 1.8m LT.</p>	<p>DETECTABLE WARNING SURFACE STA. VT 1+552.713, RT.</p> <p>PORTLAND CEMENT CONCRETE SIDEWALK, 125mm STA. VT 1+370.000 - STA. VT 1+557.105 RT.</p>	<p>GRANITE SLOPE EDGING STA. A 1+025.309, LT. - STA. A 1+100.000, LT. STA. VT 1+394.579, LT. - STA. VT 1+430.713, LT. STA. VT 1+445.544, LT. - STA. VT 1+492.913, LT. STA. A 1+047.861, RT. - STA. A 1+078.268, RT. STA. A 1+095.047, RT. - STA. A 1+100.000, RT. STA. AS 1+000.000, RT. - STA. AS 1+046.836, RT. STA. AS 1+003.170, LT. - STA. AS 1+030.021, LT. STA. D 1+000.000, RT. - STA. D 1+100.000, RT. STA. D 1+045.083, LT. - STA. D 1+081.053, LT. STA. DS 1+000.000, LT. - STA. DS 1+055.735, LT. STA. DS 1+004.144, RT. - STA. DS 1+036.626, RT.</p>	<p>CONSTRUCT DRIVE STA. DR 1+050.000, C - STA. DR 1+075.087, RT. (PAVED)</p>
<p>PROJECT DEMARCATION FENCE STA. A 1+039.1, 7.0m LT. - STA. A 1+100.0, 18.5m LT. STA. D 1+017.5, 2.8m RT. - STA. D 1+100.0, 32.7m RT.</p> <p>WOVEN WIRE FENCE WITH STEEL POSTS STA. A 1+023.900, 5.3m LT. - A 1+100.000, 12.6m LT. STA. VT 1+551.800, 6.2m RT. - D 1+100.000, 85.7m RT. STA. VT 1+519.000, 16.4m LT. - VT 1+523.000, 16.4m LT. STA. VT 1+529.000, 16.4m LT. - VT 1+533.600, 16.4m LT.</p> <p>DRIVE GATE FOR WOVEN WIRE FENCE STA. VT 1+523.0, 16.4m LT. - VT 1+529.0, 16.4m LT.</p>	<p>DEMOLITION AND DISPOSAL OF BUILDING STA. VT 1+384, 28m RT. (1/2 SWF HOUSE) STA. VT 1+401, 28m RT. (2 SWF HOUSE) STA. VT 1+431, 39m RT. (2 SWF INN) STA. VT 1+481, 31m RT. (1/2 SWF HOUSE) STA. VT 1+410, 58m RT. (SHED) STA. VT 1+470, 40m RT. (SHED)</p> <p>SOLID ROCK EXCAVATION STA. VT 1+370.000 - STA. VT 1+560.000, (REMOVAL OF CONCRETE ROADWAY)</p>	<p>REMOVAL OF EXISTING CURB STA. VT 1+370.000 - STA. VT 1+560.000 LT. STA. VT 1+370.000 - STA. VT 1+378.200 RT. STA. VT 1+381.685 - STA. VT 1+391.906 RT. STA. VT 1+402.013 - STA. VT 1+436.287 RT. STA. VT 1+441.810 - STA. VT 1+474.411 RT. STA. VT 1+479.756 - STA. VT 1+498.641 RT. STA. VT 1+502.951 - STA. VT 1+533.269 RT. STA. VT 1+539.448 - STA. VT 1+558.799 RT. (WITH THE EXCEPTION OF DRIVEWAY OPENINGS, CONC. CURB EXISTS ON BOTH SIDES OF RTE. 9 FROM MATCHLINE TO MATCHLINE.)</p>	

VERMONT AGENCY OF TRANSPORTATION



PROJECT NAME: BENNINGTON
 PROJECT NUMBER: AC NH 019-1(51)
 FILE NAME: ...vd307olgen_plans_250.pptf
 DESIGN SUPERVISOR: GREG EDWARDS
 DESIGNED BY: MARC FOISY
GENERAL PLAN P-05

PLOT DATE: 2/27/2009
 DRAWN BY: STANTEC
 CHECKED BY: GARY SANTY
 SHEET 70 OF 367

v:\953\active\9530002\tr\anspor\ation\drawing\constr\act_n\plot_files\vd307olgen_plans_250.pptf