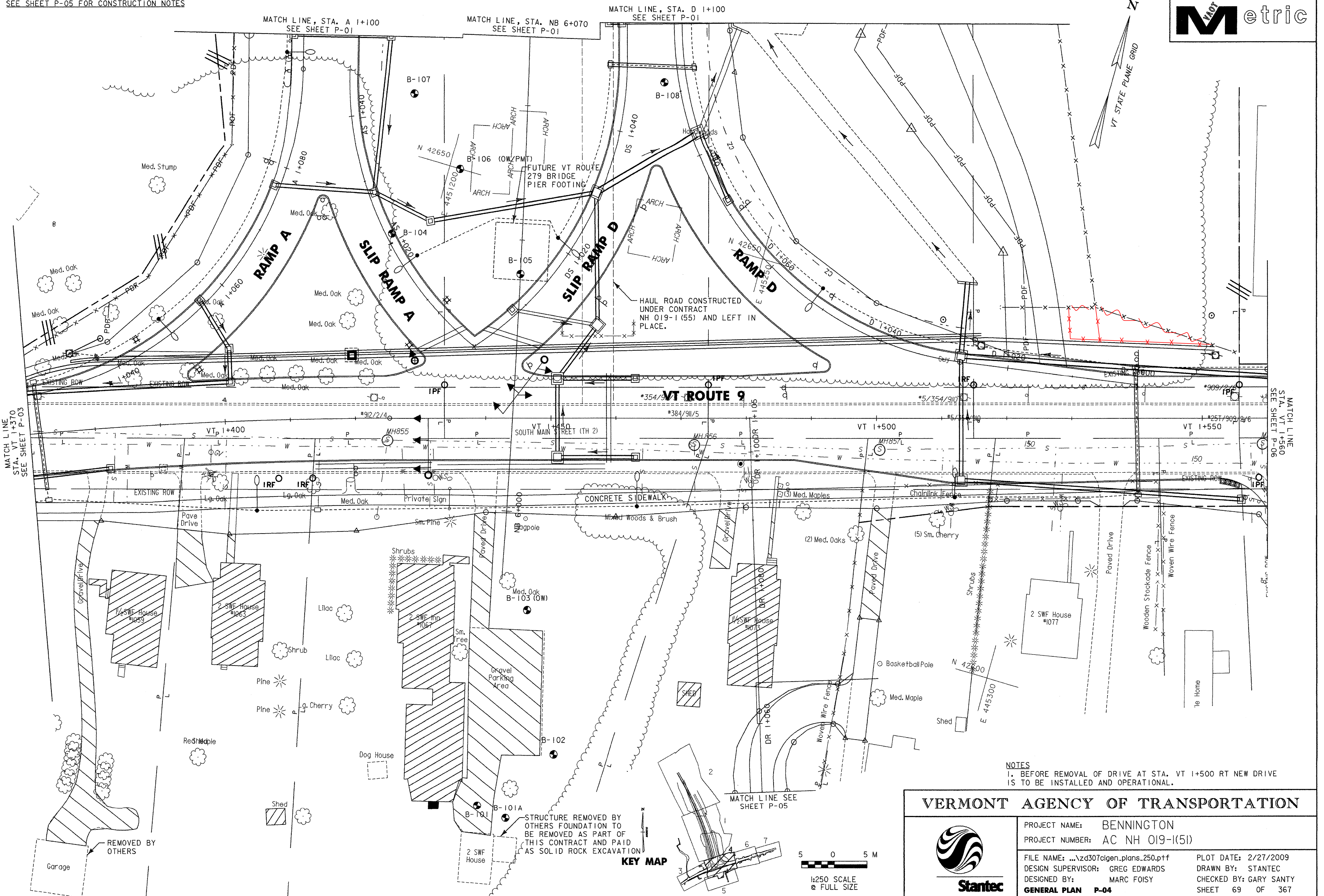


SEE SHEET P-05 FOR CONSTRUCTION NOTES



MATCH LINE STA. VT 1+370 SEE SHEET P-03

MATCH LINE, STA. A 1+100 SEE SHEET P-01

MATCH LINE, STA. NB 6+070 SEE SHEET P-01

MATCH LINE, STA. D 1+100 SEE SHEET P-01

MATCH LINE STA. VT 1+560 SEE SHEET P-06

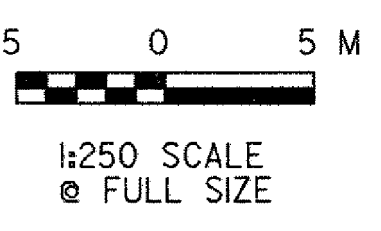
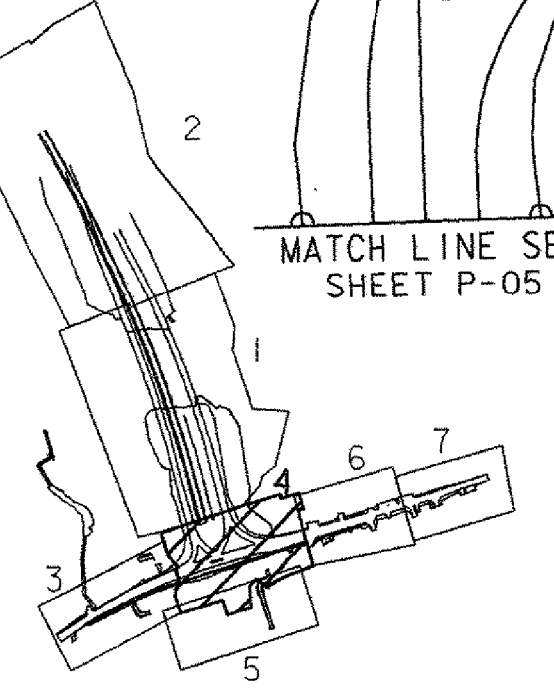
NOTES
1. BEFORE REMOVAL OF DRIVE AT STA. VT 1+500 RT NEW DRIVE IS TO BE INSTALLED AND OPERATIONAL.

VERMONT AGENCY OF TRANSPORTATION



PROJECT NAME:	BENNINGTON	PLOT DATE:	2/27/2009
PROJECT NUMBER:	AC NH 019-(K51)	DRAWN BY:	STANTEC
FILE NAME:	...z4307cigen_plans_250.p1f	CHECKED BY:	GARY SANTY
DESIGN SUPERVISOR:	GREG EDWARDS	SHEET	69 OF 367
DESIGNED BY:	MARC FOISY		
GENERAL PLAN	P-04		

KEY MAP



vt:\953\active\9530002\transportation\drawing\contract\1\plot_files\z4307cigen_plans_250.p1f