



**CAST-IN-PLACE CONCRETE CURB, TYPE B**  
 STA. VT 1+187.700 - STA. VT 1+246.911, 4.7m LT.  
 STA. VT 1+200.000 - STA. VT 1+214.474, 5.1m RT.  
 STA. VT 1+221.859 - STA. VT 1+306.208, 6.1m RT.  
 STA. VT 1+313.983 - STA. VT 1+370.000, 6.3m RT.  
 STA. VT 1+259.960 - STA. VT 1+328.779, 6.3m LT.  
 STA. VT 1+336.691 - STA. VT 1+369.202, 6.3m LT.

**GRANITE SLOPE EDGING**  
 STA. A 1+024.411, LT. - STA. A 1+025.309, LT

**WOVEN WIRE FENCE WITH STEEL POSTS**  
 STA. A 1+022.300, LT. - STA. A 1+023.883, LT

**REMOVAL OF EXISTING CURB**  
 STA. VT 1+200.000 - STA. VT 1+215.324 RT.  
 STA. VT 1+200.000 - STA. VT 1+247.853 LT.  
 STA. VT 1+220.991 - STA. VT 1+261.436 RT.  
 STA. VT 1+259.681 - STA. VT 1+330.944 LT.  
 STA. VT 1+336.000 - STA. VT 1+356.171 LT.  
 STA. VT 1+336.556 - STA. VT 1+340.735 RT.  
 STA. VT 1+352.962 - STA. VT 1+370.000 RT.  
 STA. VT 1+360.048 - STA. VT 1+370.000 LT.  
 (WITH THE EXCEPTION OF DRIVEWAY OPENINGS,  
 CONC. CURB EXISTS ON BOTH SIDES OF RTE. 9  
 FROM MATCHLINE TO MATCHLINE)

**PORTLAND CEMENT CONCRETE SIDEWALK, 125mm**  
 STA. VT 1+200.000 - STA. VT 1+248.100 LT.  
 STA. VT 1+244.800 - STA. VT 1+370.000 RT.

**DEMOLITION AND DISPOSAL OF BUILDING**  
 STA. VT 1+358, 44m RT. (GREENHOUSE)  
 STA. VT 1+361, 28m RT. (2 SWF HOUSE)

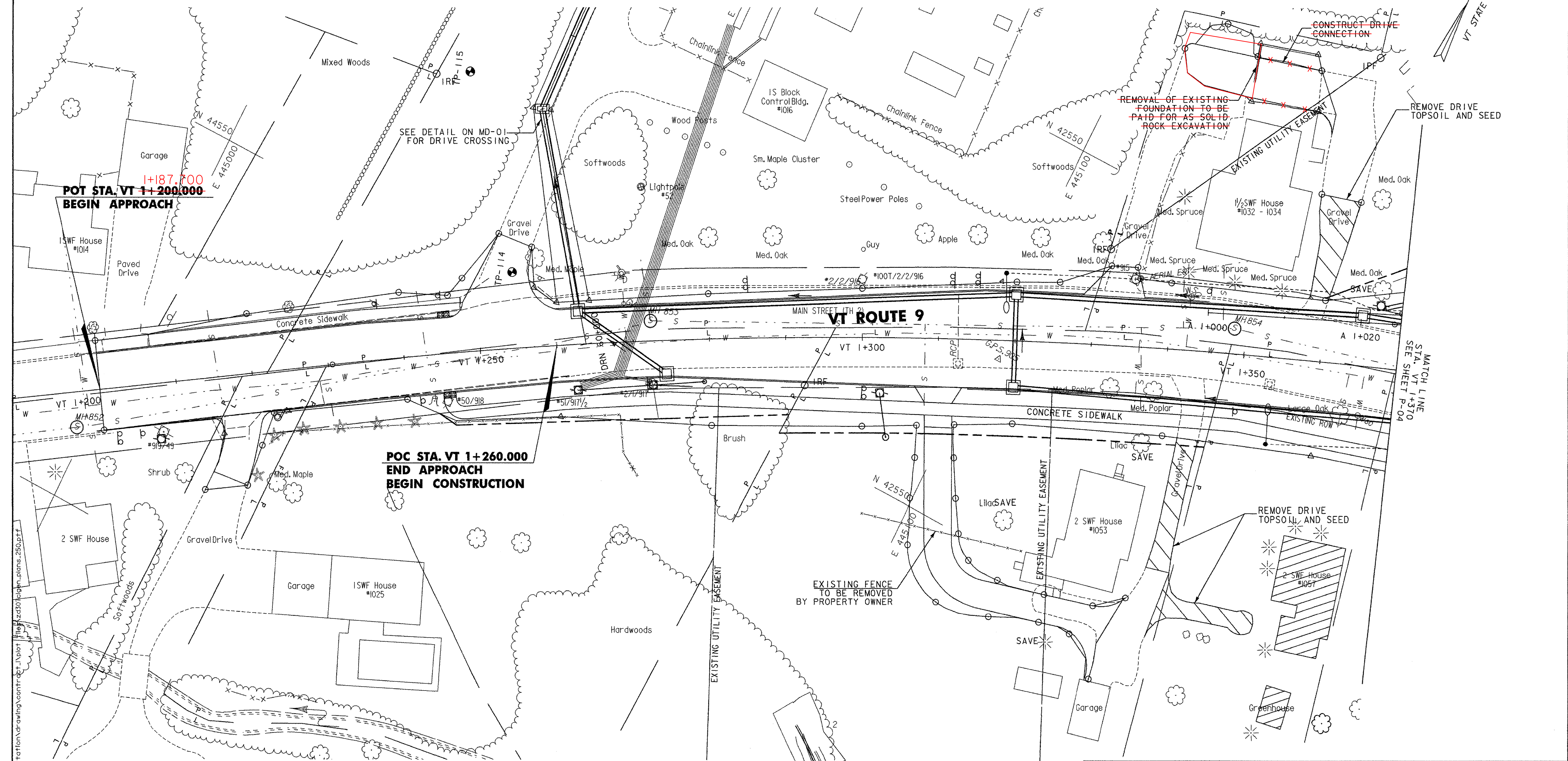
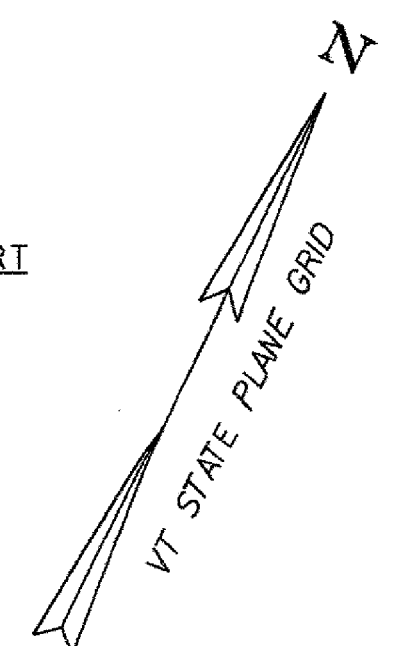
**SOLID ROCK EXCAVATION**  
 STA. VT 1+349.299, 38.8m LT. (REMOVE FOUNDATION)  
 STA. VT 1+200.000 - STA. VT 1+248.140, LT. (REMOVE EXISTING SIDEWALK)  
 STA. VT 1+200.000 - STA. VT 1+370.000, (REMOVE CONCRETE ROADWAY)

**CONSTRUCT DRIVE**  
 STA. VT 1+218.105, RT. (4.8m GRAVEL W/PAVED APRON)  
 STA. VT 1+253.381, LT. (7.2m GRAVEL W/PAVED APRON)  
 STA. VT 1+310.091, RT. (3.6m GRAVEL W/PAVED APRON TO 1.5 M BEHIND SIDEWALK)  
 STA. VT 1+332.735, LT. (3.5m GRAVEL W/PAVED APRON)  
 STA. VT 1+352.320, 32.0m LT. (5.0m GRAVEL)

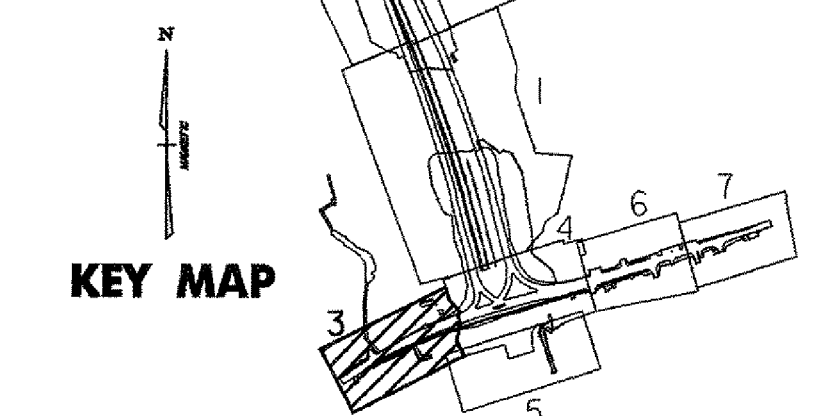
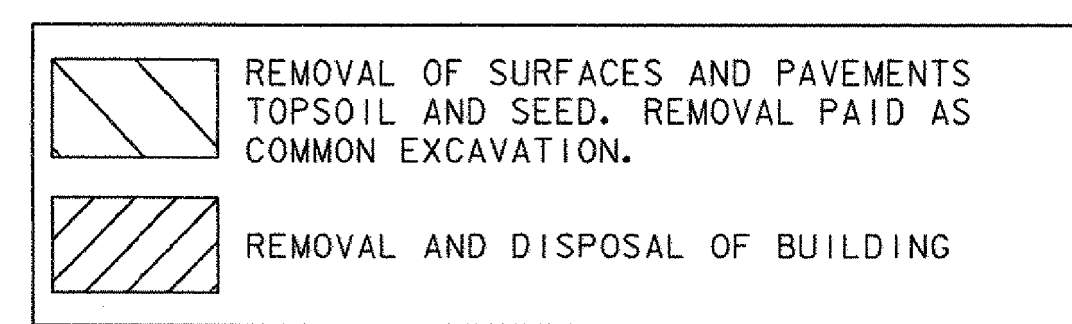
**CONSTRUCT SIDEWALK RAMP**  
 STA. VT 1+245.6, LT. (TYPE 6)  
 STA. VT 1+245.6, RT. (TYPE 1)  
 \*PAID AS PORTLAND CEMENT  
 CONCRETE SIDEWALK.  
 SEE CONSTRUCTION STANDARD  
 C-3A,C3B

**DETECTABLE WARNING SURFACE**  
 STA. VT 1+245.6, LT. & RT.


**RELOCATE MAILBOX, SINGLE SUPPORT**  
 STA. VT 1+223.0, RT.



v:\1953\active\19530002\trnsport\to\on\drawing\contr\cct\job1\fig\2430\clgen\_plans\_250.prf



**VERMONT AGENCY OF TRANSPORTATION**



PROJECT NAME: BENNINGTON	PLOT DATE: 2/3/2009
PROJECT NUMBER: AC NH 019-1(51)	DRAWN BY: STANTEC
FILE NAME: ...z\307\clgen_plans_250.prf	CHECKED BY: GARY SANTY
DESIGN SUPERVISOR: GREG EDWARDS	SHEET 68 OF 367
DESIGNED BY: MARC FOISY	
<b>GENERAL PLAN P-03</b>	