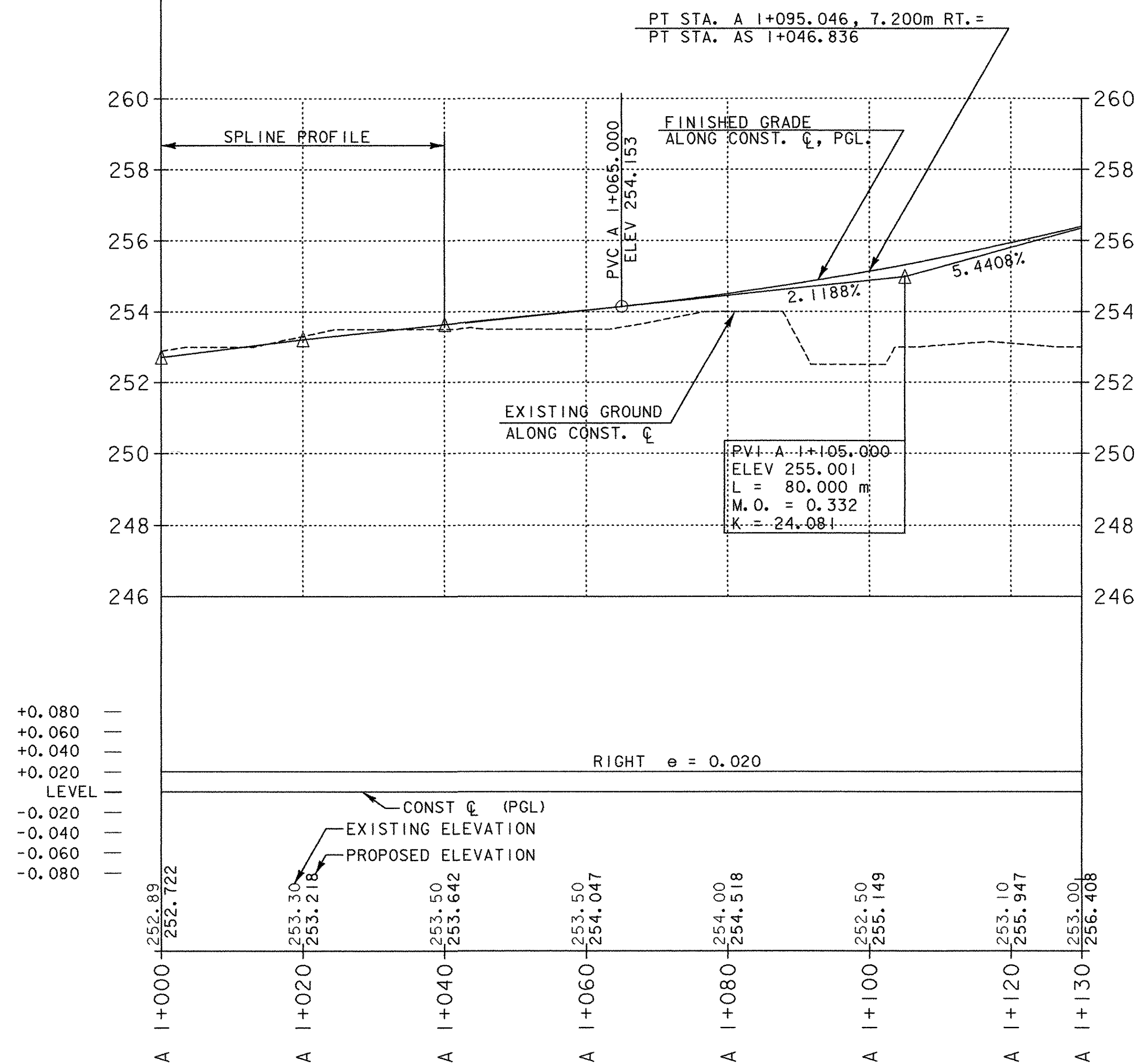
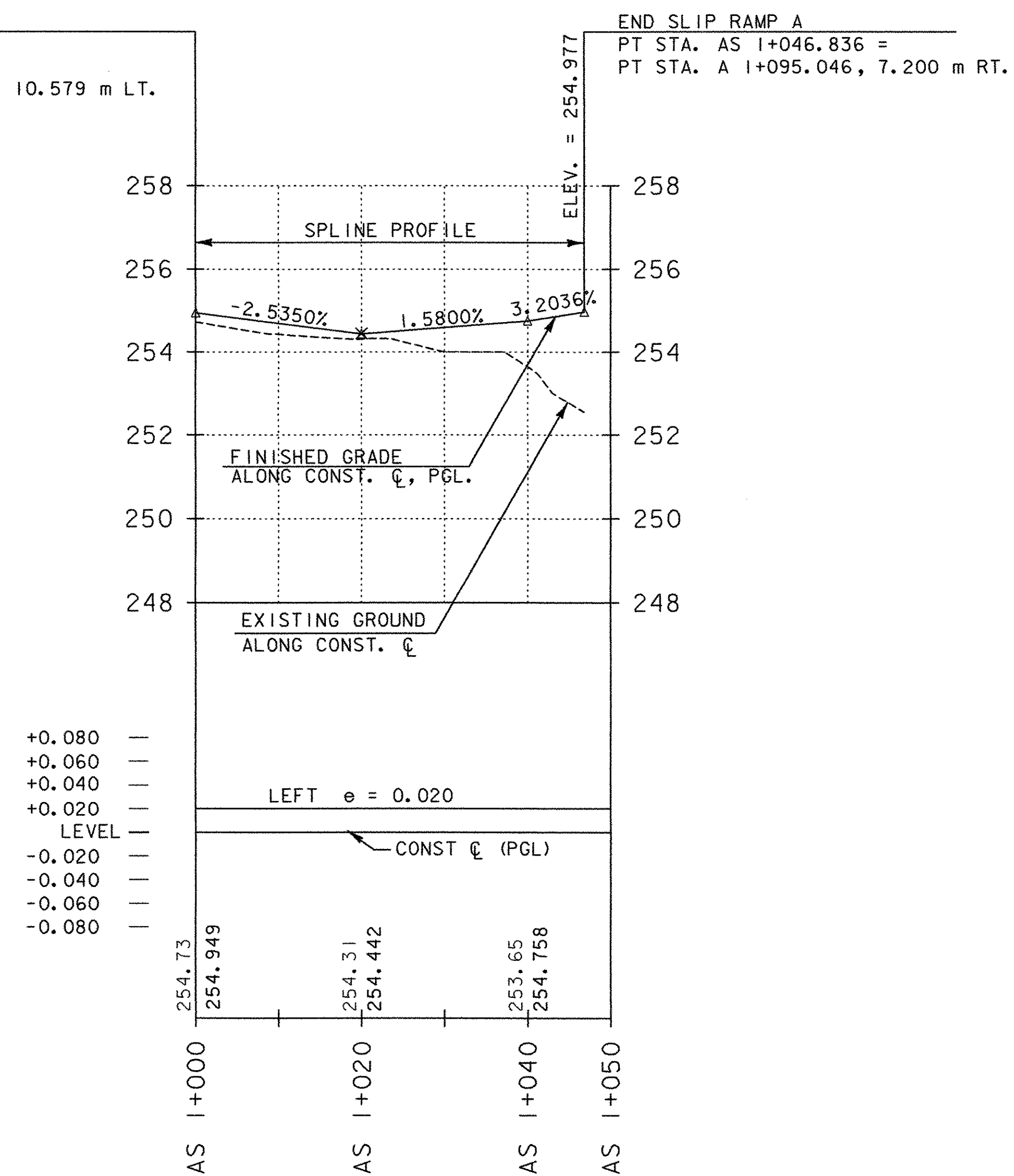


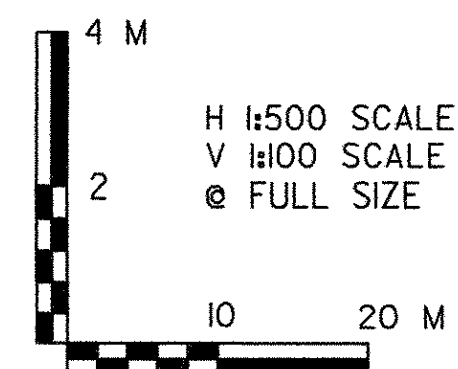
POT STA. A 1+000.000=  
POC STA. VT 1+345.000, 495.0m LT.



BEGIN SLIP RAMP A  
PC STA. AS 1+000.000 =  
PC STA. DS 1+000.000=  
POT STA. VT 1+438.235, 10.579 m LT.



V:\NBS3\active\NBS30002\transportation\drawing\contract\plot\_files\zd307\cpo\_ramp.aptf



VERMONT AGENCY OF TRANSPORTATION



PROJECT NAME: BENNINGTON  
PROJECT NUMBER: AC NH 019-(151)

FILE NAME: ...zd307\cpo\_ramp.aptf  
DESIGN SUPERVISOR: GREG EDWARDS  
DESIGNED BY: MARC FOISY  
RAMP A - PR-03

PLOT DATE: 1/30/2009  
DRAWN BY: STANTEC  
CHECKED BY: GARY SANTY  
SHEET 58 OF 367