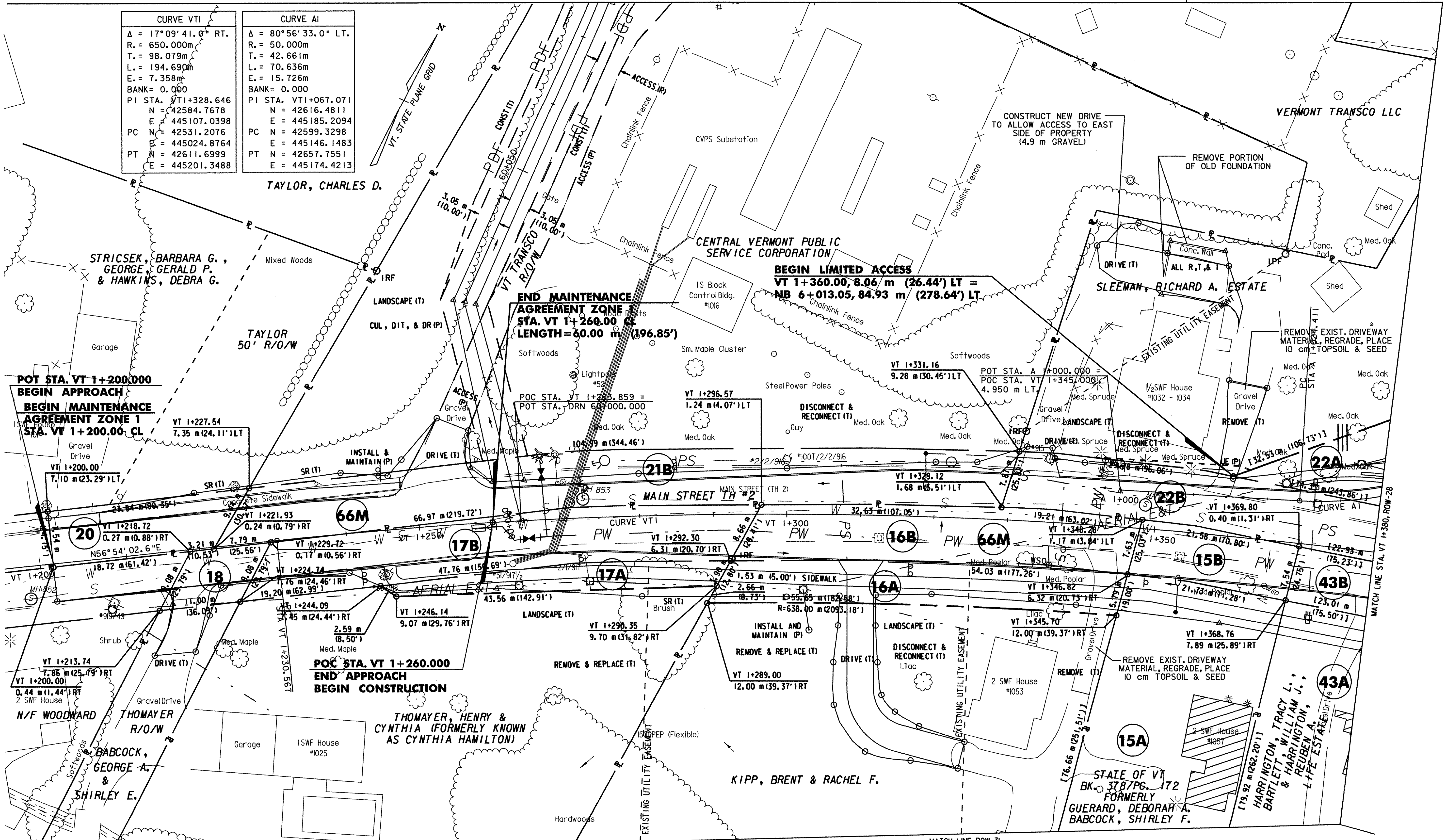


MATCH LINE ROW-6A

MATCH LINE ROW-6

CURVE VTI	CURVE AI
$\Delta = 17^{\circ}09'41.0''$ RT.	$\Delta = 80^{\circ}56'33.0''$ LT.
R. = 650.000m	R. = 50.000m
T. = 98.079m	T. = 42.661m
L. = 194.690m	L. = 70.636m
E. = 7.358m	E. = 15.726m
BANK = 0.000	BANK = 0.000
PI STA. VT1+328.646	PI STA. VT1+067.071
N = 42584.7678	N = 42616.4811
E = 445107.0398	E = 445185.2094
PC N = 42531.2076	PC N = 42599.3298
E = 445024.8764	E = 445146.1483
PT N = 42611.6999	PT N = 42657.7551
E = 445201.3488	E = 445174.4213



**END MAINTENANCE AGREEMENT ZONE 1**  
 STA. VT 1+260.00 CL  
 LENGTH=60.00 m (196.85')

**BEGIN LIMITED ACCESS**  
 VT 1+360.00, 8.06 m (26.44') LT =  
 NB 6+013.05, 84.93 m (278.64') LT

**POT STA. VT 1+200.000**  
**BEGIN APPROACH**  
**BEGIN MAINTENANCE**  
**AGREEMENT ZONE 1**  
**STA. VT 1+200.00 CL**

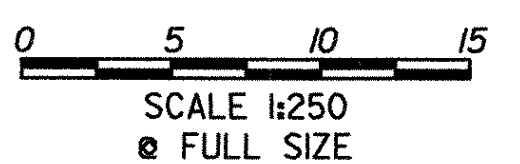
**POC STA. VT 1+260.000**  
**END APPROACH**  
**BEGIN CONSTRUCTION**

**CONSTRUCT DRIVE**  
 STA. VT 1+218.0, RT. (5.6 m GRAVEL)  
 STA. VT 1+249.1, LT. (4.6 m GRAVEL)  
 STA. VT 1+310.0, RT. (3.6 m BIT.)  
 STA. VT 1+331.4, LT. (3.4 m GRAVEL)

LINES SHOWN ON THIS PLAN AS EXISTING PROPERTY LINES P/L ARE BELIEVED TO BE ACCURATE BUT SHOULD NOT BE RELIED UPON FOR PURPOSES UNRELATED TO THE STATE OF VERMONT'S ACQUISITION OF LAND AND RIGHTS FOR THIS PROJECT.

THIS SHEET TO BE USED FOR RIGHT-OF-WAY INFORMATION ONLY

SIGNIFIES DEMOLITION & REMOVAL OF STRUCTURES AND IMPROVEMENTS



**R.O.W. PLAN**  
**ROW-27**

PROJECT NAME: BENNINGTON	PROJECT NUMBER: AC NH 019-(K51)
DESIGN FILE NAME: c:\dh\bennington\row	PLOT DATE: 1-26-09
PROJECT LEADER: JDP	DRAWN BY: MBB
	CHECKED BY: GAK
SHEET: 34 OF 367	

DATUM	
VERTICAL	NAVD 88
HORIZONTAL	NAD 83 (1992)