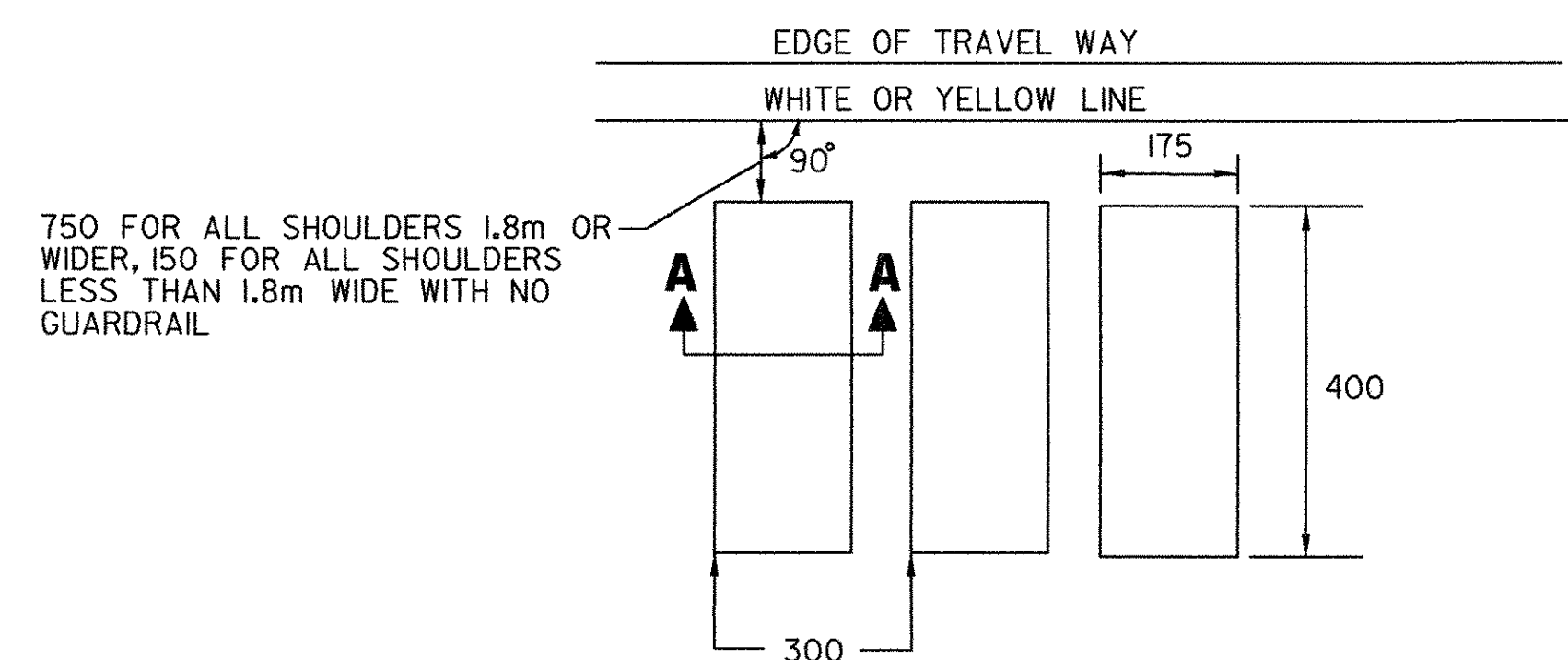
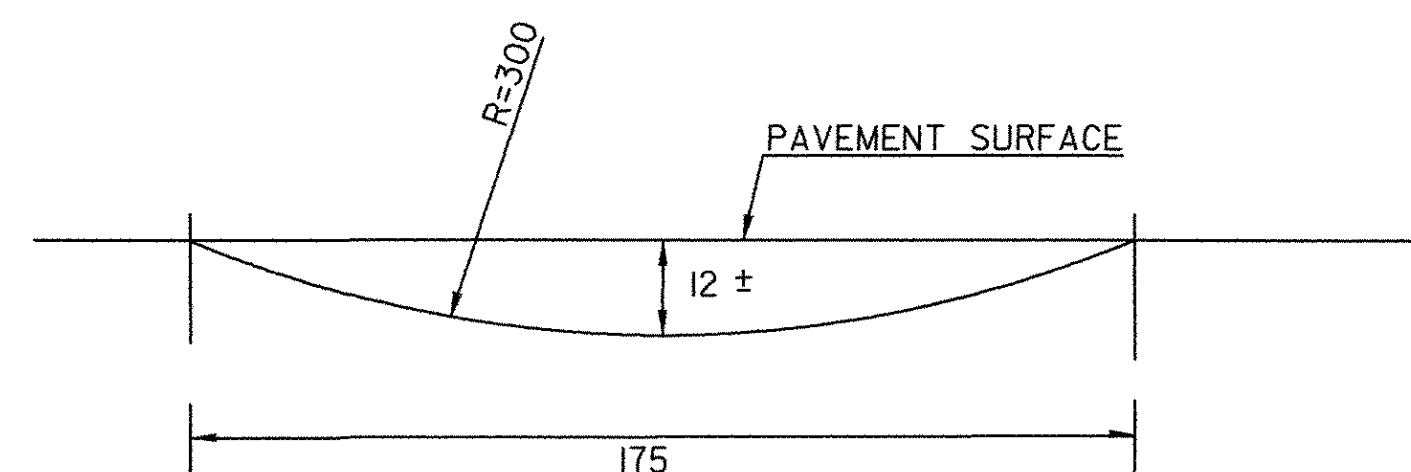
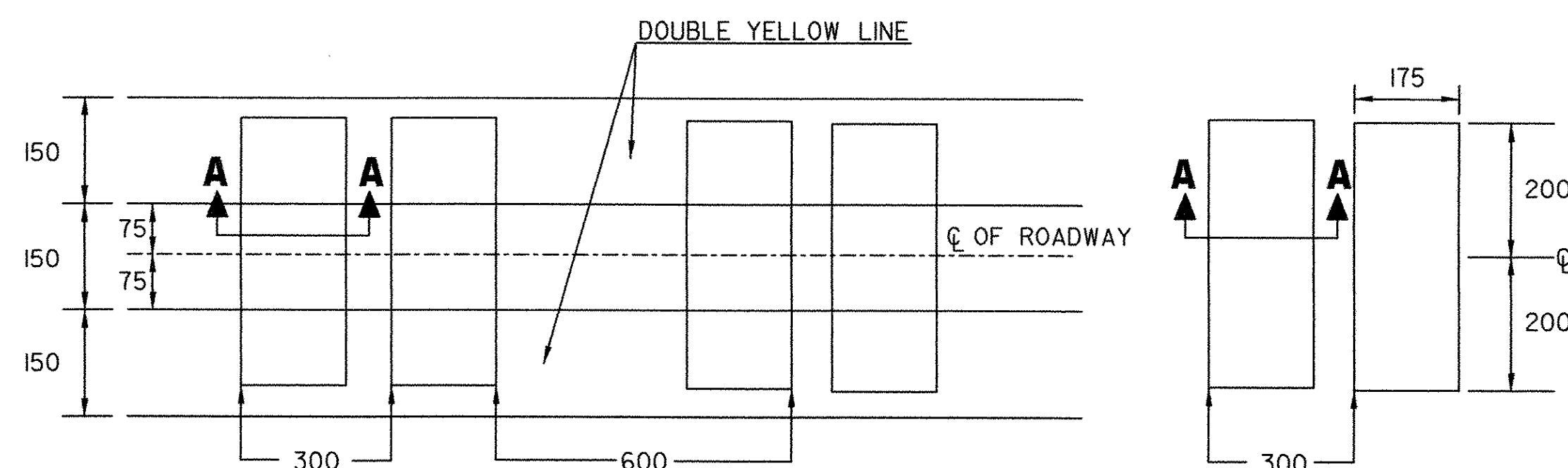


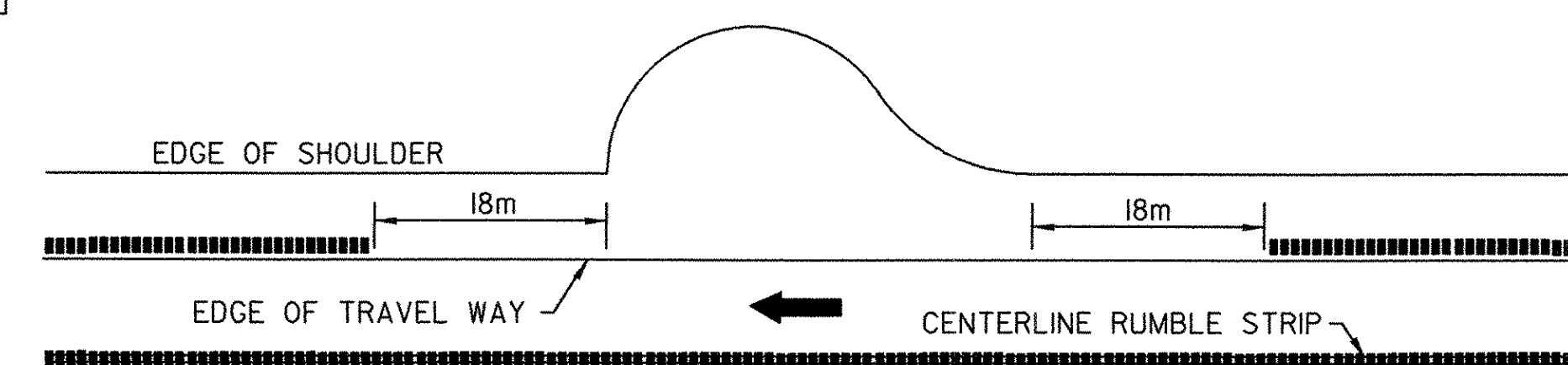
SHOULDER MILLED RUMBLE STRIP DETAIL



CENTERLINE MILLED RUMBLE STRIP DETAIL



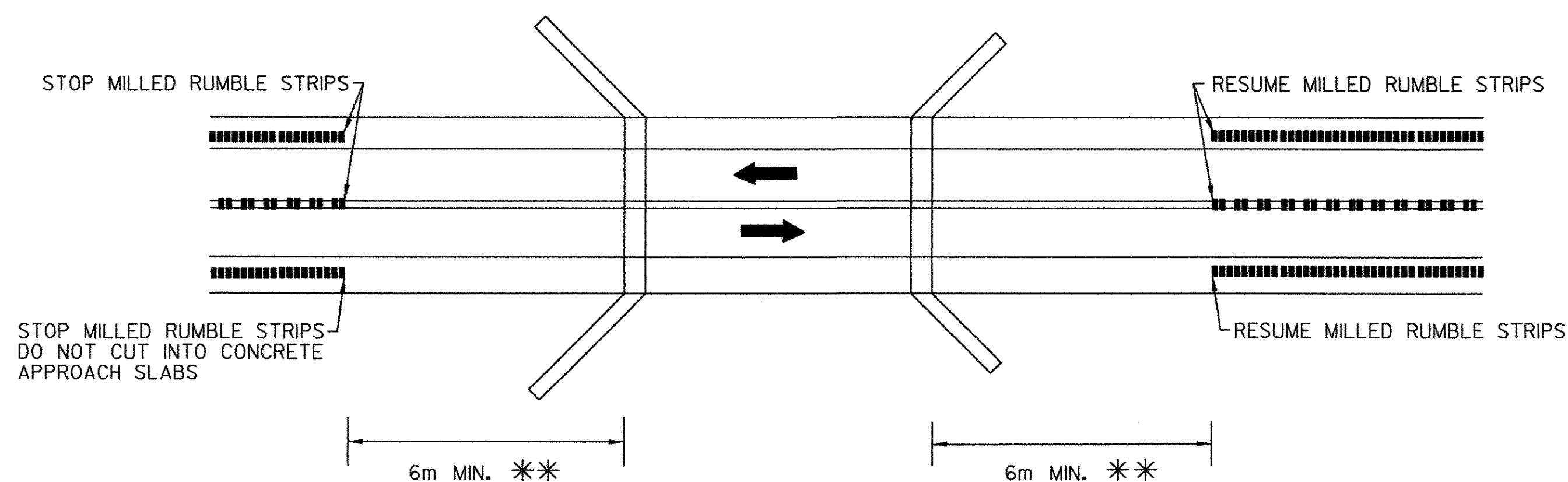
SECTION A-A



SNOW PLOW TURN AROUND DETAIL

NB 6+800, NB 8+900

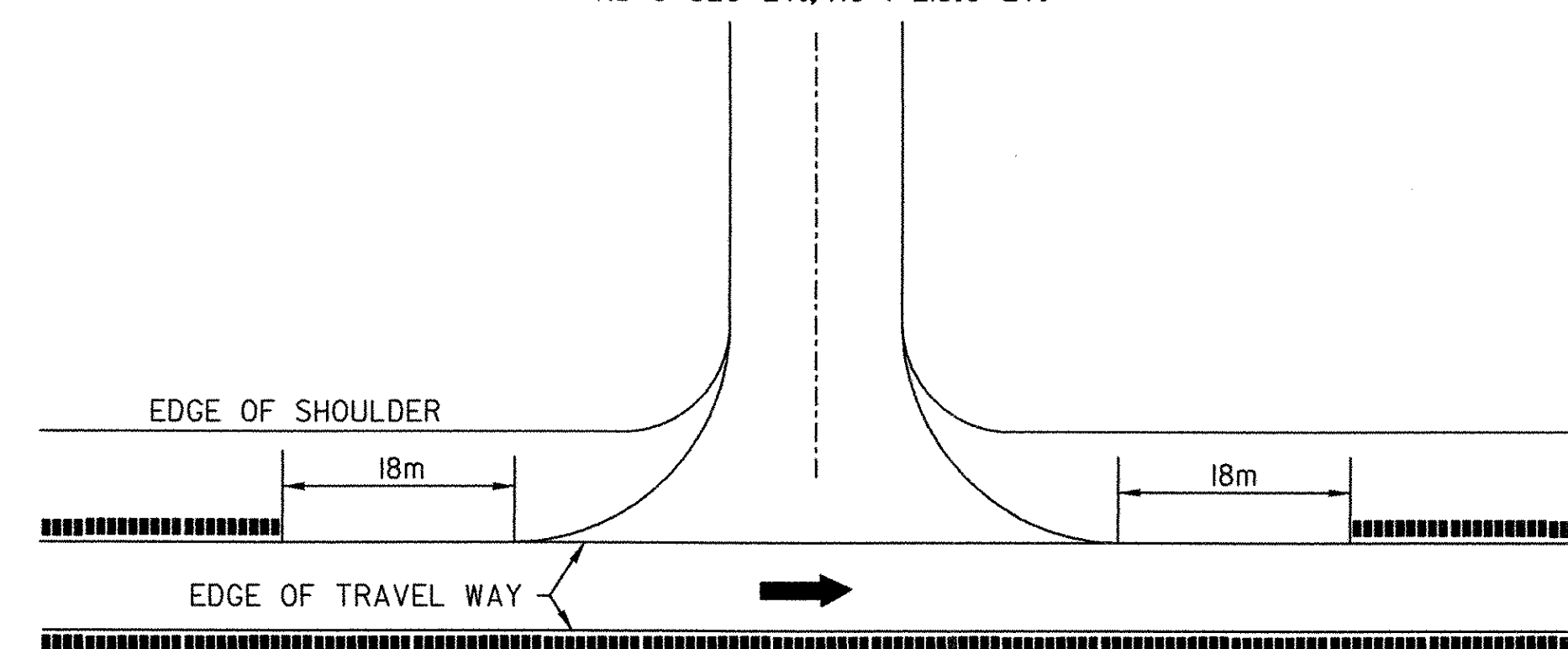
BRIDGE DETAIL



** BRIDGE RAIL WILL DETERMINE MINIMUM DISTANCE IN SOME CASES.

U-TURN DETAIL

NB 9+320 LT., XO 1+215.0 LT.



LEGEND

- DIRECTION OF TRAFFIC FLOW
- MILLED RUMBLE STRIPS (SHOULDERS)
- MILLED RUMBLE STRIPS (CENTERLINE)

NOTES:

1. MILLED RUMBLE STRIPS WILL NOT BE REQUIRED IN GUARDRAIL AREAS ADJACENT TO THE 1.2m SHOULDER.
2. ALL DIMENSIONS ARE IN MILLIMETERS (mm) EXCEPT WHERE NOTED.
3. CENTERLINE RUMBLE STRIPS SHALL BE INSTALLED PRIOR TO CENTERLINE PAVEMENT MARKINGS.
4. CENTERLINE RUMBLE STRIPS SHALL NOT EXTEND BEYOND THE OUTER LIMITS OF THE CENTERLINE PAVEMENT MARKINGS.
5. SEE SIGNS AND MARKINGS SHEETS SP-02 TO SP-II FOR MILLED RUMBLE STRIP LOCATIONS

VERMONT AGENCY OF TRANSPORTATION



PROJECT NAME: BENNINGTON
PROJECT NUMBER: AC NH 019-(151)

FILE NAME: ...plot files\vd307clmsc.04.pff PLOT DATE: 1/28/2009
DESIGN SUPERVISOR: GREG EDWARDS DRAWN BY: STANTEC
DESIGNED BY: MARC FOISY CHECKED BY: GARY SANTY
MISCELLANEOUS DETAILS MD-04 SHEET II OF 367

V:\953\active\9530002\Transportation\Drawing\contract\plot_files\vd307clmsc.04.pff