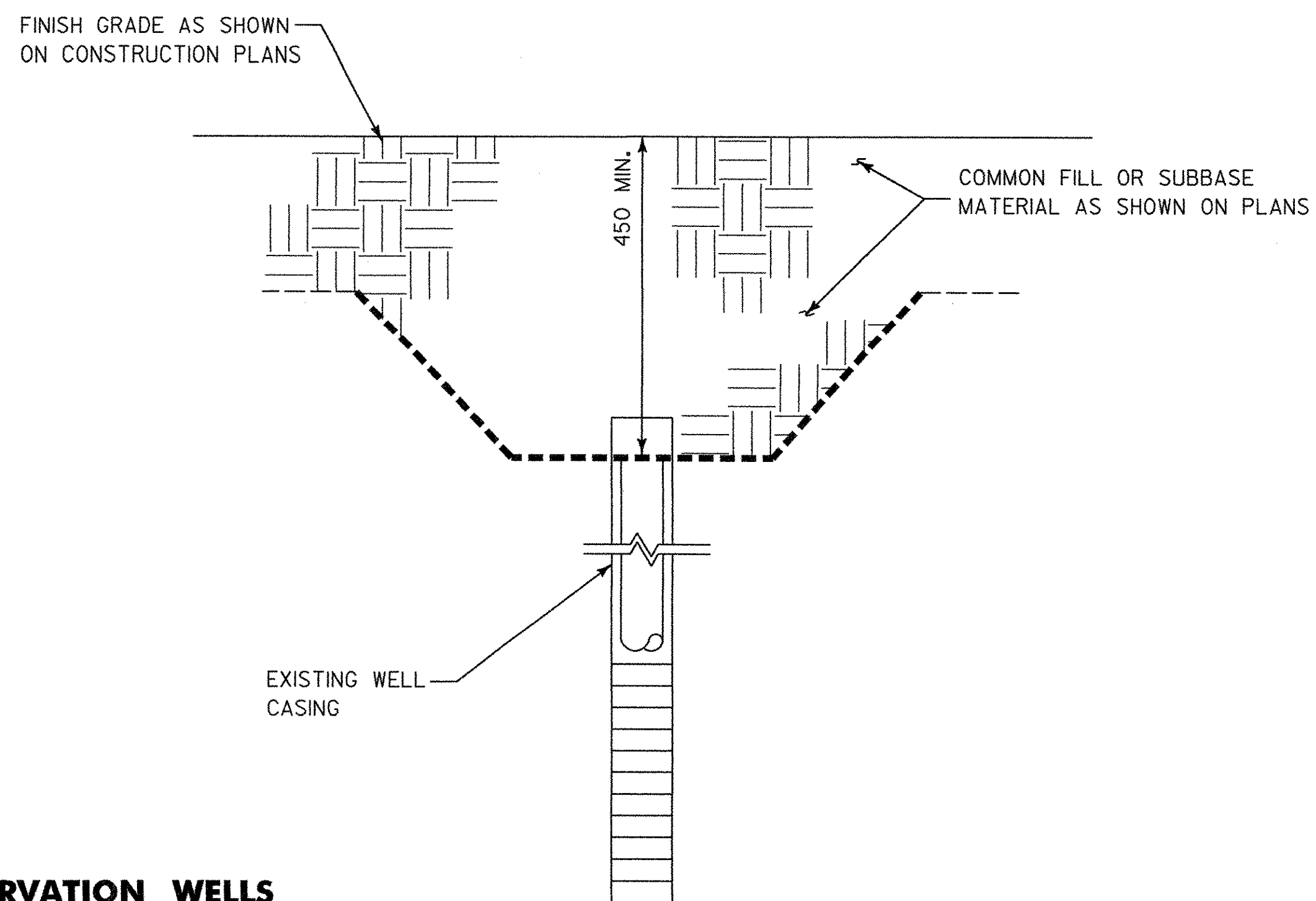


**EXISTING CONDITION**



**FINAL CONDITION**

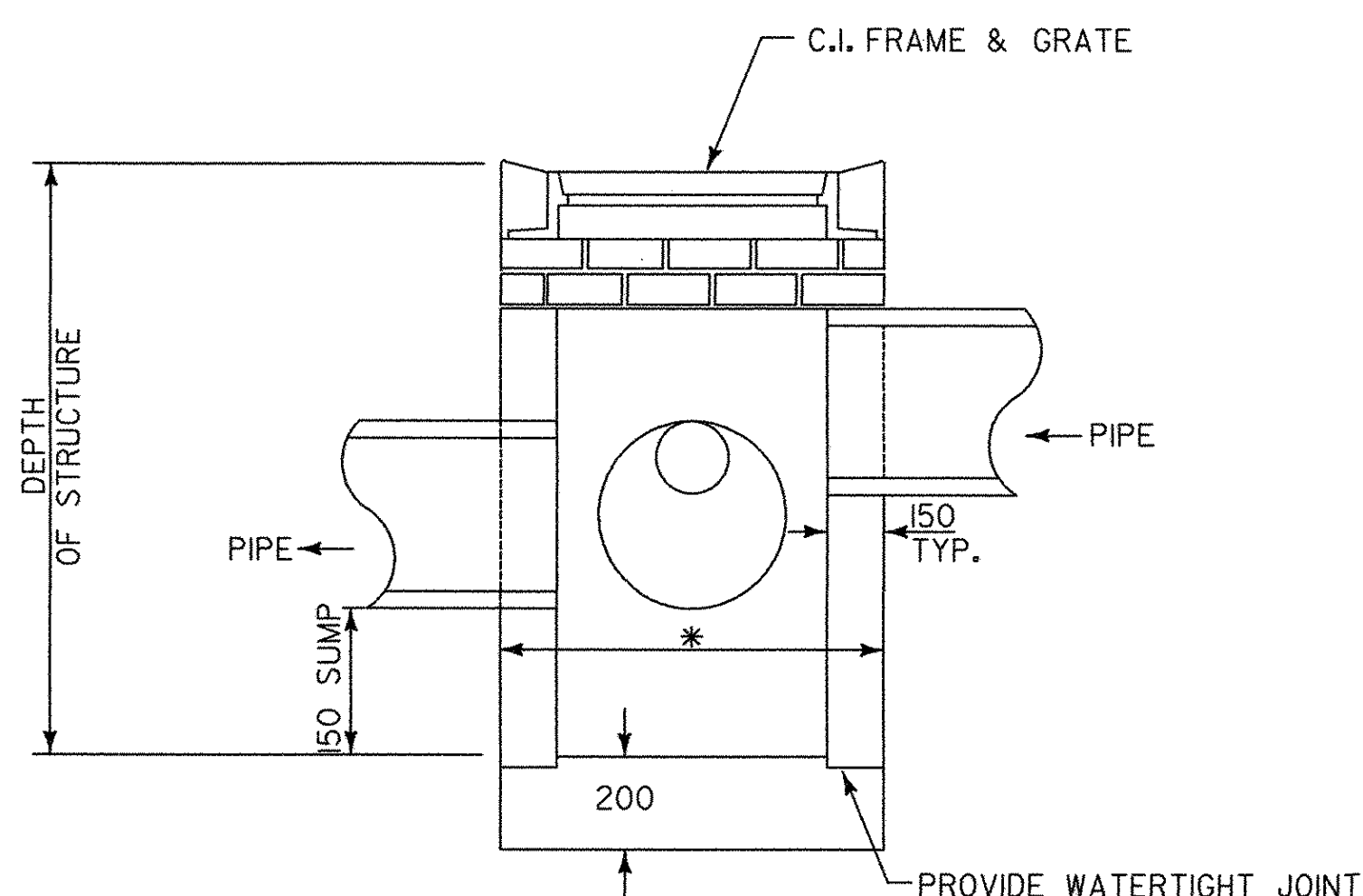
**SPECIAL PROVISION DECOMMISSION OBSERVATION WELLS  
GROUNDWATER OBSERVATION WELL DECOMMISSIONING DETAILS**

NOT TO SCALE

WELL NO.	STATION	OFFSET	CASING DEPTH	BORING DEPTH
B-110 (OW)	A 1+158.687	10.0m LT.	9.1m	18.9m
B-113 (OW)	A 1+243.139	1.7m LT.	9.1m	25.2m
B-117 (OW)	A 1+288.444	2.7m LT.	6.1m	35.2m
B-119 (OW)	A 1+344.946	2.5m LT.	6.1m	36.6m
B-23 (OW)	D 1+409.833	14.7m RT.	12.2m	12.8m
B-10 (OW)	D 1+222.503	11.0m RT.	12.0m	25.0m
B-115 (OW)	D 1+239.654	3.6m LT.	9.1m	36.8m
B-12 (OW)	D 1+270.844	14.8m RT.	11.7m	36.7m
B-17 (OW)	D 1+331.536	7.4m RT.	9.1m	36.8m
B-18 (OW)	D 1+335.063	7.5m LT.	9.1m	36.8m
B-20 (OW)	D 1+397.330	2.0m RT.	29.0m	33.5m
B-22 (OW)	NB 6+380.000	8.0m LT.	30.5m	34.9m
B-15 (OW)	NB 6+256.000	8.0m LT.	12.2m	36.7m
B-19 (OW)	NB 6+310.000	5.0m LT.	9.1m	36.7m
B-123 (OW)	NB 6+427.000	8.0m LT.	14.9m	14.9m
B-106 (OW)	VT 1+436.074	36.7m LT.	9.1m	30.5m
B-103 (OW)	VT 1+446.333	28.3m RT.	12.2m	18.9m
B-124 (OW)	DRN 60+050.34	5.1m LT.	7.9m	9.8m
B-125 (OW)	DRN 60+147.30	15.9m RT.	9.0m	9.8m
B-126 (OW)	DRN 60+250.95	26.4m RT.	9.1m	9.8m

**GROUNDWATER OBSERVATION WELL GENERAL NOTES**

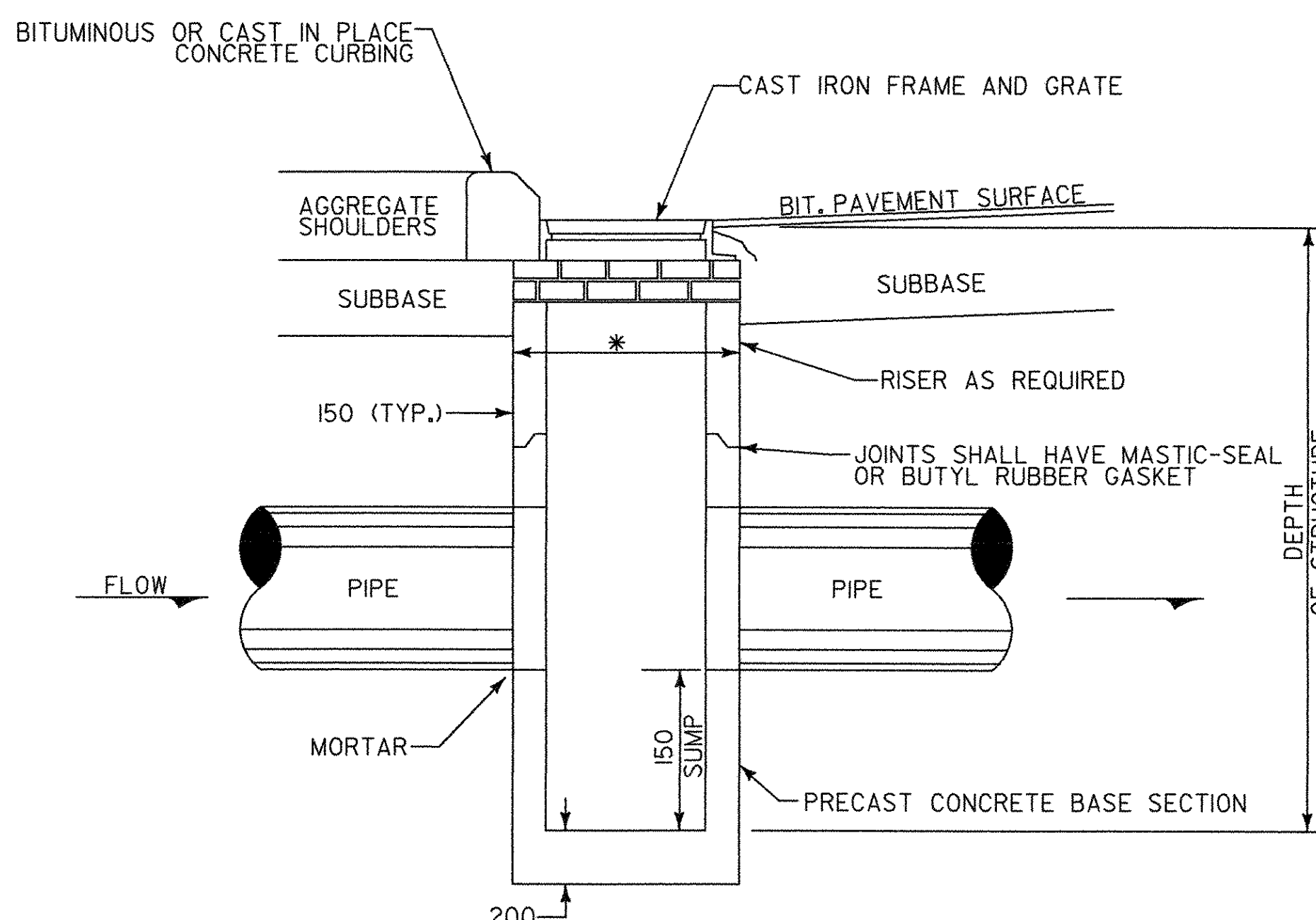
- (20) OBSERVATION WELLS ARE KNOWN TO BE LOCATED ON THE PROJECT. THE CONTRACTOR SHALL LOCATE AND DECOMMISSION EACH WELL.
- THE APPROXIMATE DEPTH OF EACH OBSERVATION WELL (CASING & BORING DEPTH) IDENTIFIED AS SHOWN IN THE TABLE.
- OBSERVATION WELL CASING INSIDE DIAMETER IS EITHER 19mm OR 51mm.
- ALL WORK AND MATERIALS SHOWN ON GROUNDWATER OBSERVATION WELL DECOMMISSIONING DETAILS IS TO BE INCIDENTAL TO ITEM 900.620 SPECIAL PROVISION (DECOMMISSION OBSERVATION WELL)



- NOTES:
- DIMENSIONS IN MILLIMETERS (mm) EXCEPT AS NOTED.
  - REFERENCE VTRANS STANDARD D-6 FOR ADDITIONAL DETAILS AND SPECIFICATIONS, INCLUDING TOP FOR 1200X1800 DI.

**TYPICAL PRECAST DROP INLET IN DITCHES (SECTION A-A)**

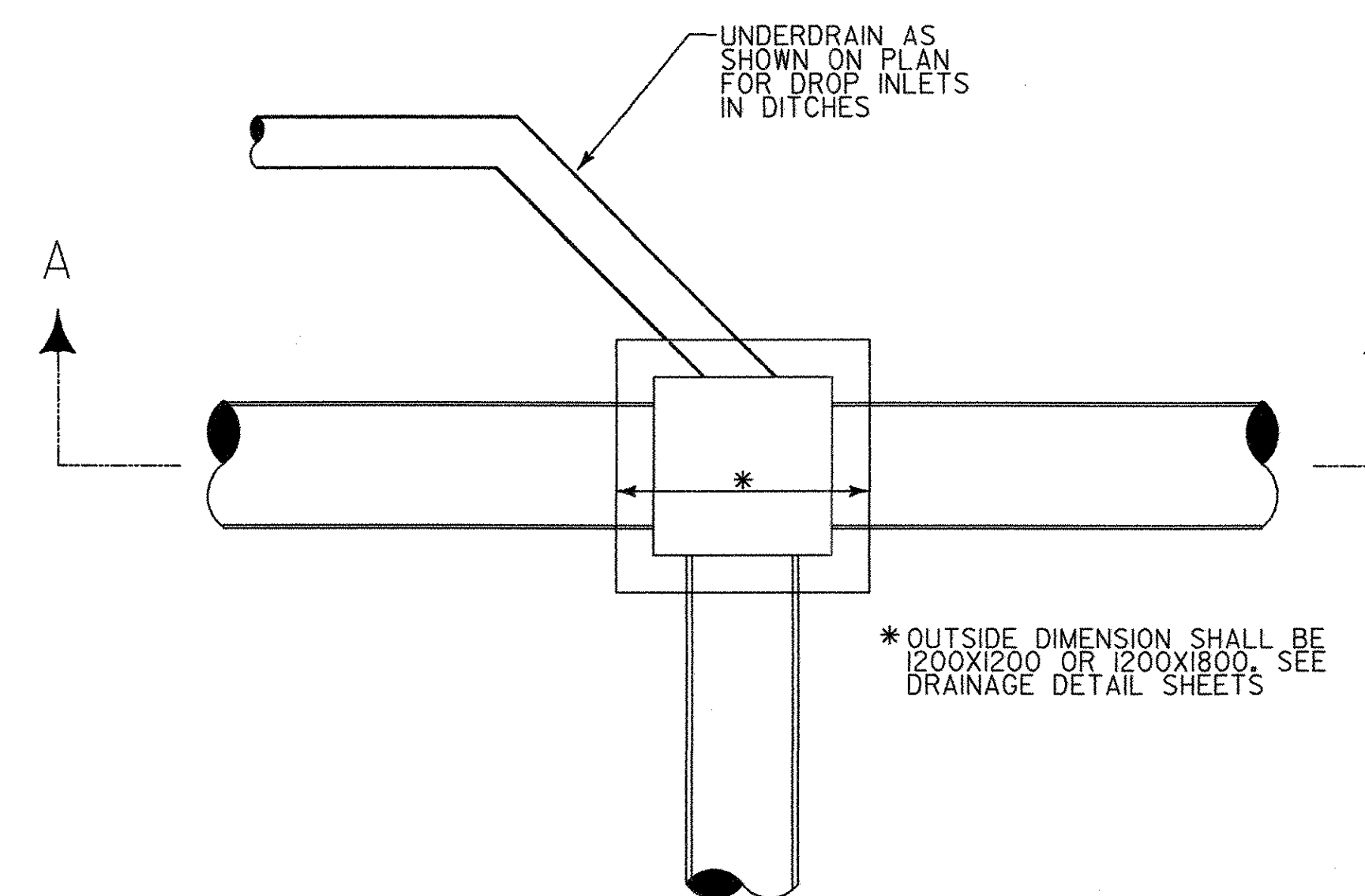
NOT TO SCALE



- NOTES:
- DIMENSIONS IN MILLIMETERS (mm) EXCEPT WHERE NOTED.
  - REFERENCE VTRANS STANDARDS D-6, D-8, AND D-10 FOR ADDITIONAL DETAILS AND SPECIFICATIONS.

**TYPICAL PRECAST DROP INLET IN ROADWAY (SECTION A-A)**

NOT TO SCALE



**PLAN VIEW FOR PRECAST REINFORCED CONCRETE DROP INLET IN DITCHES & ROADWAY**

NOT TO SCALE

NOTE: ALL DIMENSIONS ARE IN MILLIMETERS (mm) EXCEPT WHERE NOTED.

**VERMONT AGENCY OF TRANSPORTATION**



PROJECT NAME: BENNINGTON  
PROJECT NUMBER: AC NH 019-(K51)

FILE NAME: ...plot files\zd307c\misc\_02.pft PLOT DATE: 2/2/2009  
DESIGN SUPERVISOR: GREG EDWARDS DRAWN BY: STANTEC  
DESIGNED BY: MARC FOISY CHECKED BY: GARY SANTY  
MISCELLANEOUS DETAILS MD-02 SHEET 9 OF 367