

646.402 DURABLE 4 INCH WHITE LINE, THERMOPLASTIC
 (ALL LINES WILL INCLUDE EDGE LINE BREAKS AND RADIUS FOR TOWN HIGHWAYS)
 WOODSTOCK:
 STA. 240+00.00 - STA. 256+00.00 LT & RT
 STA. 242+00.00 - STA. 243+95.00 SOLID LINE LT
 STA. 243+95.00 - STA. 244+95.00 DOTTED LINE LT

646.412 DURABLE 4 INCH YELLOW LINE, THERMOPLASTIC
 (ALL LINES WILL INCLUDE C/L BREAKS FOR TOWN HIGHWAYS)
 WOODSTOCK:
 STA. 240+00.00 - STA. 241+80.00 DOUBLE SOLID MEDIAN LT/RT
 STA. 241+98.24 DOUBLE SOLID RT, SCHOOL DRIVEWAY
 STA. 242+20.00 - STA. 243+95.00 DOUBLE SOLID C/L
 STA. 243+95.00 - STA. 247+00.00 DOUBLE SOLID MEDIAN LT/RT
 STA. 247+00.00 - STA. 256+00.00 DOUBLE SOLID C/L
 STA. 251+27.52 DOUBLE SOLID RT, TH-50

646.452 DURABLE 8 INCH YELLOW LINE, THERMOPLASTIC
 WOODSTOCK:
 STA. 240+00.00 - STA. 241+80.00 HATCHED MEDIAN C/L
 STA. 243+95.00 - STA. 247+00.00 HATCHED MEDIAN C/L

646.482 DURABLE 24 INCH STOP BAR, THERMOPLASTIC

WOODSTOCK:
 STA. 241+98.24 RT, SCHOOL DRIVEWAY
 STA. 251+27.52 RT, TH-50

646.492 DURABLE LETTER OR SYMBOL, THERMOPLASTIC

WOODSTOCK:
 STA. 241+98.24 RT, SCHOOL DRIVEWAY, "S,T,O,P" (4 EA)
 STA. 242+29.3 LT ARROW (1 EA)
 STA. 242+69.3 LT "O,N,L,Y" (4 EA)
 STA. 243+54.8 LT ARROW (1 EA)
 STA. 243+91.0 LT "O,N,L,Y" (4 EA)
 STA. 250+14.0 LT "S,C,H,O,O,L" (6 EA)
 STA. 251+27.52 RT, TH-50, "S,T,O,P" (4 EA)

646.501 DURABLE CROSSWALK MARKING, TYPE I TAPE

WOODSTOCK:
 STA. 247+82.00 LT/RT

646.602 TEMPORARY 4 INCH WHITE LINE, PAINT
 (ALL LINES WILL INCLUDE EDGE LINE BREAKS AND RADIUS FOR TOWN HIGHWAYS)

WOODSTOCK:
 STA. 240+00.00 - STA. 256+00.00 LT & RT
 STA. 242+00.00 - STA. 243+95.00 SOLID LINE LT
 STA. 243+95.00 - STA. 244+95.00 DOTTED LINE LT

646.612 TEMPORARY 4 INCH YELLOW LINE, PAINT
 (ALL LINES WILL INCLUDE C/L BREAKS FOR TOWN HIGHWAYS) S=SOLID, D=DASHED

WOODSTOCK:
 STA. 240+00.00 - STA. 241+80.00 DOUBLE SOLID MEDIAN LT/RT
 STA. 241+98.24 DOUBLE SOLID RT, SCHOOL DRIVEWAY
 STA. 242+20.00 - STA. 243+95.00 DOUBLE SOLID C/L
 STA. 243+95.00 - STA. 247+00.00 DOUBLE SOLID MEDIAN LT/RT
 STA. 247+00.00 - STA. 256+00.00 DOUBLE SOLID C/L
 STA. 251+27.52 DOUBLE SOLID RT, TH-50

646.682 TEMPORARY 24 INCH STOP BAR, PAINT

WOODSTOCK:
 STA. 241+98.24 RT, SCHOOL DRIVEWAY
 STA. 251+27.52 RT, TH-50

646.692 TEMPORARY LETTER OR SYMBOL, PAINT

WOODSTOCK:
 STA. 241+98.24 RT, SCHOOL DRIVEWAY, "S,T,O,P" (8 EA)
 STA. 242+29.3 LT ARROW (2 EA)
 STA. 243+54.8 LT ARROW (2 EA)
 STA. 250+14.0 LT "S,C,H,O,O,L" (12 EA)
 STA. 251+27.52 RT, TH-50, "S,T,O,P" (8 EA)

646.702 TEMPORARY CROSSWALK MARKING, PAINT

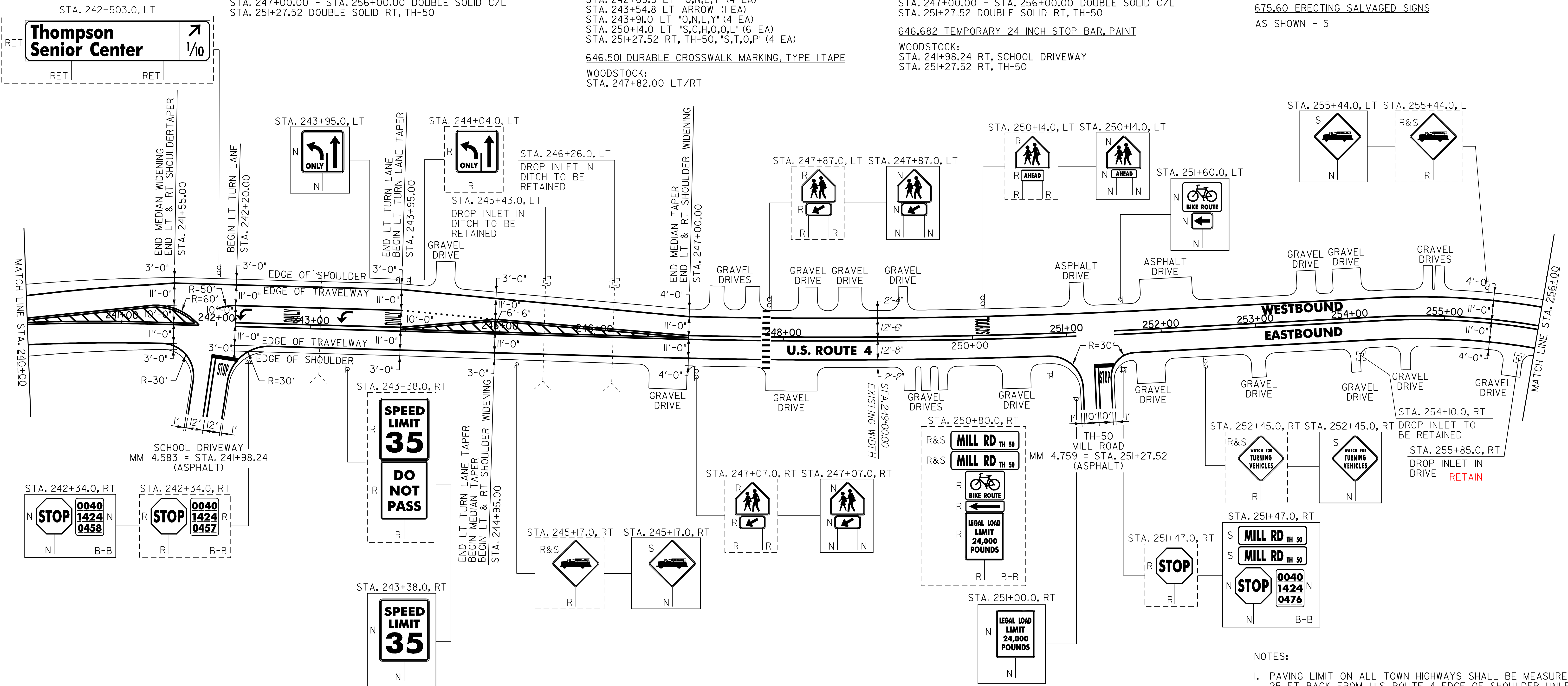
WOODSTOCK:
 STA. 247+82.00 LT/RT

675.50 REMOVING SIGNS

AS SHOWN - 20

675.60 ERECTING SALVAGED SIGNS

AS SHOWN - 5



604.412 REHAB. DROP INLETS, CATCH BASINS OR MANHOLE, CLASS 1
 WOODSTOCK:
 STA. 255+85.0 RT

SIGN LEGEND
 R = REMOVE
 S = SALVAGE
 N = NEW
 RET = RETAIN
 B-B = BACK TO BACK
 EXISTING =
 NEW =

NOT TO SCALE
PROJECT LAYOUT SHEET #22

PROJECT NAME: BRIDGEWATER - WOODSTOCK
 PROJECT NUMBER: NH_2611(S)
 FILE NAME: p06b160.dgn
 PROJECT LEADER: D.E.G.
 DESIGNED BY: D.W.E.
 IPARM FILE: p06b160i22.i
 PLOT DATE: 28-MAY-2010
 DRAWN BY: C.A.K.
 CHECKED BY: D.E.G.
 SHEET 33 OF 80

NOTES:
 1. PAVING LIMIT ON ALL TOWN HIGHWAYS SHALL BE MEASURED 25 FT BACK FROM U.S. ROUTE 4 EDGE OF SHOULDER UNLESS DENOTED OTHERWISE ON THE PLANS OR AS DIRECTED BY THE RESIDENT ENGINEER.
 2. SEE SHEET 79 FOR DETAIL OF CROSSWALK MARKINGS.