

646.402 DURABLE 4 INCH WHITE LINE, THERMOPLASTIC  
(ALL LINES WILL INCLUDE EDGE LINE BREAKS AND RADIUS FOR TOWN HIGHWAYS)  
WOODSTOCK:  
STA. 224+00.00 - STA. 240+00.00 LT & RT

646.412 DURABLE 4 INCH YELLOW LINE, THERMOPLASTIC  
(ALL LINES WILL INCLUDE C/L BREAKS FOR TOWN HIGHWAYS) S=SOLID, D=DASHED  
WOODSTOCK:  
STA. 224+00.00 - STA. 239+50.00 LT C RT S - S  
STA. 239+34.24 DOUBLE SOLID LT, TH-30  
STA. 239+50.00 - STA. 240+00.00 DOUBLE SOLID MEDIAN C/L

646.452 DURABLE 8 INCH YELLOW LINE, THERMOPLASTIC  
WOODSTOCK:  
STA. 239+50.00 - STA. 240+00.00 HATCHED MEDIAN C/L

646.482 DURABLE 24 INCH STOP BAR, THERMOPLASTIC  
WOODSTOCK:  
STA. 239+34.24 LT, TH-30

646.492 DURABLE LETTER OR SYMBOL, THERMOPLASTIC  
WOODSTOCK:  
STA. 235+20.00 RT "S,C,H,O,O,L" (6 EA)  
STA. 239+34.24 LT, TH-30, "S,T,O,P" (4 EA)

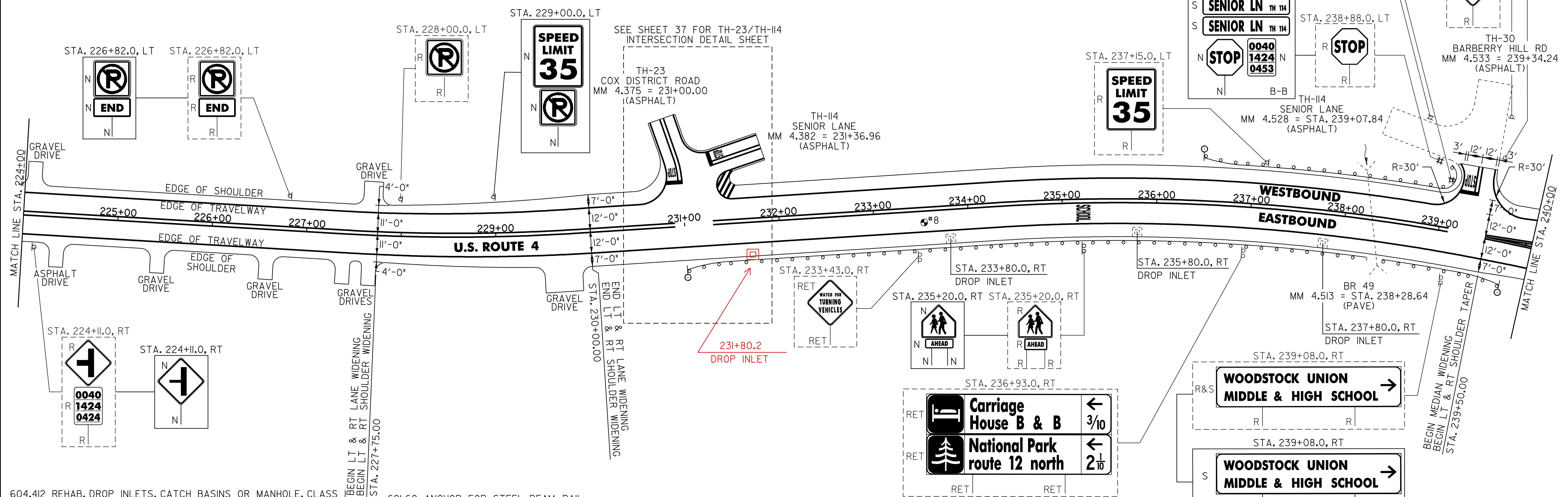
646.602 TEMPORARY 4 INCH WHITE LINE, PAINT  
(ALL LINES WILL INCLUDE EDGE LINE BREAKS AND RADIUS FOR TOWN HIGHWAYS)  
WOODSTOCK:  
STA. 224+00.00 - STA. 240+00.00 LT & RT

646.612 TEMPORARY 4 INCH YELLOW LINE, PAINT  
(ALL LINES WILL INCLUDE C/L BREAKS FOR TOWN HIGHWAYS) S=SOLID, D=DASHED  
WOODSTOCK:  
STA. 224+00.00 - STA. 239+50.00 LT C RT S - S  
STA. 239+34.24 DOUBLE SOLID LT, TH-30  
STA. 239+50.00 - STA. 240+00.00 DOUBLE SOLID MEDIAN C/L

646.682 TEMPORARY 24 INCH STOP BAR, PAINT  
WOODSTOCK:  
STA. 239+34.24 LT, TH-30

646.692 TEMPORARY LETTER OR SYMBOL, PAINT  
WOODSTOCK:  
STA. 235+20.00 RT "S,C,H,O,O,L" (12 EA)  
STA. 239+34.24 LT, TH-30, "S,T,O,P" (8 EA)

675.50 REMOVING SIGNS  
AS SHOWN - 17  
675.60 ERECTING SALVAGED SIGNS  
AS SHOWN - 5



604.412 REHAB. DROP INLETS, CATCH BASINS OR MANHOLE, CLASS I  
WOODSTOCK:  
STA. 233+80.0 RT } COVERED W/ PLATE  
STA. 235+80.0 RT } AND FILLED W/  
STA. 237+80.0 RT } FLOWABLE FILL

621.20 STEEL BEAM GUARDRAIL, GALVANIZED  
WOODSTOCK:  
STA. 231+37.5 - STA. 239+37.5 RT (800.0 LF)  
STA. 236+85.0 - STA. 239+10.0 LT (264.5 LF)

621.50 MANUFACTURED TERMINAL SECTION, FLARED  
WOODSTOCK:  
STA. 231+00.0 - STA. 231+37.5 RT  
STA. 236+47.5 - STA. 236+85.0 LT  
STA. 239+37.5 - STA. 239+75.0 RT  
238+75 239+12.5

621.60 ANCHOR FOR STEEL BEAM RAIL  
WOODSTOCK:  
STA. 239+10.0 LT (2)

621.80 REMOVAL AND DISPOSAL OF GUARDRAIL  
WOODSTOCK:  
STA. 231+33.0 - STA. 239+63.0 RT (830.0 LF)  
STA. 236+58.0 - STA. 239+10.0 LT (264.5 LF)

676.10 DELINEATOR WITH STEEL POST  
♀ TYPE I WHITE  
WOODSTOCK:  
STA. 231+00.0 RT  
STA. 236+47.5 LT  
STA. 239+75.0 RT

NOTE:

1. PAVING LIMIT ON ALL TOWN HIGHWAYS SHALL BE MEASURED 25 FT BACK FROM U.S. ROUTE 4 EDGE OF SHOULDER UNLESS DENOTED OTHERWISE ON THE PLANS OR AS DIRECTED BY THE RESIDENT ENGINEER.

SIGN LEGEND  
R = REMOVE  
S = SALVAGE  
N = NEW  
RET = RETAIN  
B-B = BACK TO BACK  
EXISTING = - - - - -  
NEW = \_\_\_\_\_

NOT TO SCALE

**PROJECT LAYOUT SHEET #21**

PROJECT NAME: BRIDGEWATER - WOODSTOCK  
PROJECT NUMBER: NH\_2611(S)  
FILE NAME: p06b160.dgn  
PROJECT LEADER: D.E.G.  
DESIGNED BY: D.W.E.  
IPARM FILE: p06b160i.plt  
PLOT DATE: 28-MAY-2010  
DRAWN BY: C.A.K.  
CHECKED BY: D.E.G.  
SHEET 32 OF 80

PAVEMENT CORES = ●

#	DEPTH (INCH)	PCC	COMMENTS
8	5 3/4		NO