

646.402 DURABLE 4 INCH WHITE LINE, THERMOPLASTIC
 (ALL LINES WILL INCLUDE EDGE LINE BREAKS AND RADIUS FOR TOWN HIGHWAYS)
 WOODSTOCK:
 STA. 176+00.00 - STA. 192+00.00 LT & RT

646.412 DURABLE 4 INCH YELLOW LINE, THERMOPLASTIC
 (ALL LINES WILL INCLUDE C/L BREAKS FOR TOWN HIGHWAYS) S=SOLID, D=DASHED
 WOODSTOCK:
 STA. 176+00.00 - STA. 192+00.00 LT C RT
 STA. 178+93.92 DOUBLE SOLID LT, TH-I7 S - S

646.482 DURABLE 24 INCH STOP BAR, THERMOPLASTIC
 WOODSTOCK:
 STA. 178+93.92 LT, TH-I7

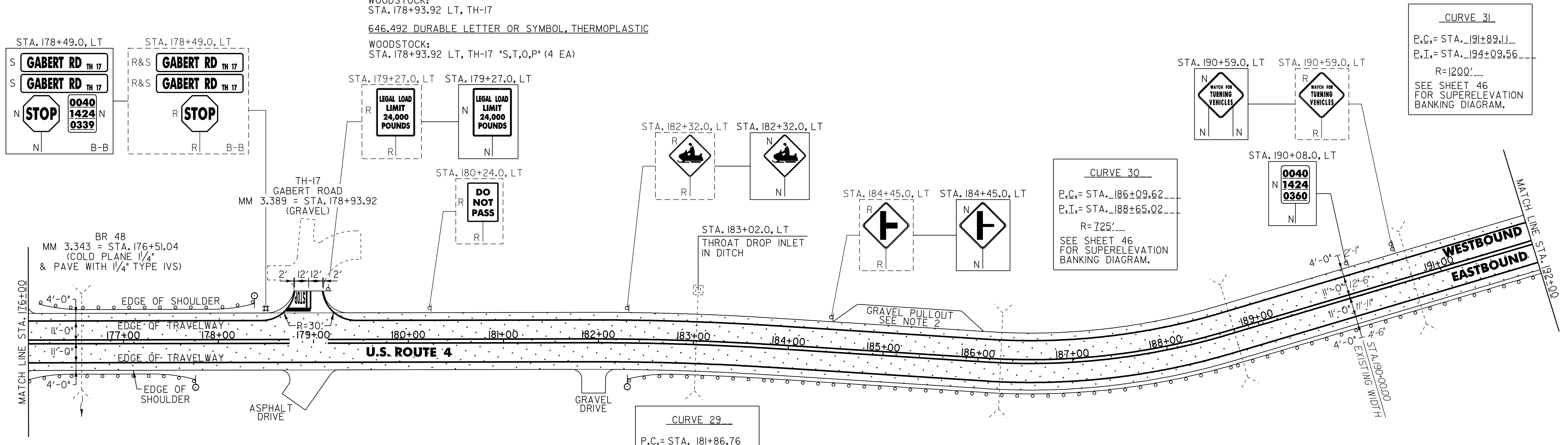
646.492 DURABLE LETTER OR SYMBOL, THERMOPLASTIC
 WOODSTOCK:
 STA. 178+93.92 LT, TH-I7 "S,T,O,P" (4 EA)

646.602 TEMPORARY 4 INCH WHITE LINE, PAINT
 (ALL LINES WILL INCLUDE EDGE LINE BREAKS AND RADIUS FOR TOWN HIGHWAYS)
 WOODSTOCK:
 STA. 176+00.00 - STA. 192+00.00 LT & RT

646.612 TEMPORARY 4 INCH YELLOW LINE, PAINT
 (ALL LINES WILL INCLUDE C/L BREAKS FOR TOWN HIGHWAYS) S=SOLID, D=DASHED
 WOODSTOCK:
 STA. 176+00.00 - STA. 192+00.00 LT C RT
 S - S

675.50 REMOVING SIGNS
 AS SHOWN - 8

675.60 ERECTING SALVAGED SIGNS
 AS SHOWN - 2



525.10 REMOVAL OF EXISTING RAILING
 WOODSTOCK:
 STA. 176+38.0 - STA. 176+63.0 LT (25.0 LF)
 STA. 176+38.0 - STA. 176+63.0 RT (25.0 LF)

604.412 REHAB. DROP INLETS, CATCH BASINS OR MANHOLE, CLASS I
 BRIDGEWATER:
 STA. 183+02.0 LT

621.20 STEEL BEAM GUARDRAIL, GALVANIZED
 WOODSTOCK:
 STA. 176+00.0 - STA. 176+13.0 RT (12.5 LF)
~~STA. 176+88.0 - STA. 178+00.5 LT (12.5 LF)~~
~~STA. 176+88.0 - STA. 177+38.0 RT (50.0 LF)~~

621.205 STEEL BEAM GUARDRAIL, GALVANIZED W/8 FEET POSTS
 WOODSTOCK:
 STA. 182+68.5 - STA. 192+00.0 RT (931.5 LF)

621.21 HD STEEL BEAM GUARDRAIL, GALVANIZED
 WOODSTOCK:
 STA. 176+11.0 - STA. 176+38.0 LT (32.0 LF)
 STA. 176+13.0 - STA. 176+38.0 RT (32.5 LF)
 STA. 176+63.0 - STA. 176+88.0 LT (32.5 LF)
 STA. 176+63.0 - STA. 176+88.0 RT (32.5 LF)

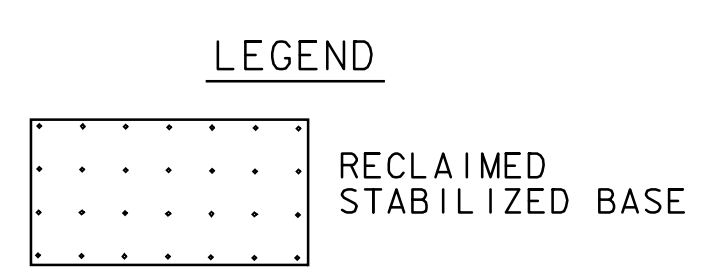
621.50 MANUFACTURED TERMINAL SECTION, FLARED
 WOODSTOCK: 176+88.0 25.5
~~STA. 177+38.0 - STA. 177+75.5 RT~~
~~STA. 178+00.5 - STA. 178+38.0 LT (177+25.5)~~
~~STA. 182+31.0 - STA. 182+68.5 RT~~

621.60 ANCHOR FOR STEEL BEAM RAIL
 WOODSTOCK:
 STA. 176+08.0 RT
 STA. 176+20.5 LT

621.80 REMOVAL AND DISPOSAL OF GUARDRAIL
 WOODSTOCK:
 STA. 176+10.0 - STA. 176+38.0 LT (28.0 LF)
 STA. 176+10.0 - STA. 176+38.0 RT (28.0 LF)
 STA. 176+63.0 - STA. 176+87.0 LT (24.0 LF)
 STA. 176+63.0 - STA. 176+87.0 RT (24.0 LF)
 STA. 182+31.0 - STA. 192+00.0 RT (969.0 LF)

676.10 DELINEATOR WITH STEEL POST
 ♀ TYPE I WHITE
 WOODSTOCK:
 STA. 177+75.5 RT
 STA. 178+38.0 LT
 STA. 182+31.0 RT

525.60 BRIDGE RAILING REPAIR, TYPE III
 WOODSTOCK:
 STA. 176+38.0 - STA. 176+63.0 LT (25.0 LF)
 STA. 176+38.0 - STA. 176+63.0 RT (25.0 LF)



SIGN LEGEND
 R = REMOVE
 S = SALVAGE
 N = NEW
 RET = RETAIN
 B-B = BACK TO BACK
 EXISTING = -----
 NEW = -----

- NOTES:
- PAVING LIMIT ON ALL TOWN HIGHWAYS SHALL BE MEASURED 25 FT BACK FROM U.S. ROUTE 4 EDGE OF SHOULDER UNLESS DENOTED OTHERWISE ON THE PLANS OR AS DIRECTED BY THE RESIDENT ENGINEER.
 - PROVIDE A 5 FT WIDE, 1 3/4" TYPE III APRON FOR THE EXISTING GRAVEL PULLOUT. ANY REQUIRED EXCAVATION SHALL BE PERFORMED AS DIRECTED BY THE RESIDENT ENGINEER AND PAID FOR UNDER ITEM 608.25 ALL PURPOSE EXCAVATOR RENTAL, TYPE I.
 - SEE SHEET 78 FOR BRIDGE 48 DETAILS.

PROJECT LAYOUT SHEET #18	NOT TO SCALE	
	PROJECT NAME: BRIDGEWATER - WOODSTOCK	PROJECT NUMBER: NH_2611(S)
FILE NAME: p06b160.dgn	PLOT DATE: 28-MAY-2010	DESIGNED BY: D.W.E.
IPARM FILE: p06b16018.i	CHECKED BY: D.E.G.	SHEET 29 OF 80