

646.402 DURABLE 4 INCH WHITE LINE, THERMOPLASTIC  
 (ALL LINES WILL INCLUDE EDGE LINE BREAKS AND RADIUS FOR TOWN HIGHWAYS)  
 WOODSTOCK:  
 STA. 160+00.00 - STA. 176+00.00 LT & RT  
 STA. 164+20.00 - STA. 165+80.00 SOLID LINE LT  
 STA. 165+80.00 - STA. 167+50.00 DOTTED LINE LT

646.412 DURABLE 4 INCH YELLOW LINE, THERMOPLASTIC  
 (ALL LINES WILL INCLUDE C/L BREAKS FOR TOWN HIGHWAYS)  
 WOODSTOCK:  
 STA. 160+00.00 - STA. 161+25.00 DOUBLE SOLID C/L  
 STA. 161+25.00 - STA. 164+00.00 DOUBLE SOLID MEDIAN C/L  
 STA. 164+20.80 DOUBLE SOLID RT, TH-35  
 STA. 164+40.00 - STA. 165+80.00 DOUBLE SOLID RT  
 STA. 165+80.00 - STA. 171+00.00 DOUBLE SOLID MEDIAN LT/RT  
 STA. 171+00.00 - STA. 176+00.00 DOUBLE SOLID C/L  
 STA. 172+07.52 DOUBLE SOLID LT, TH-28

646.452 DURABLE 8 INCH YELLOW LINE, THERMOPLASTIC  
 WOODSTOCK:  
 STA. 161+25.00 - STA. 164+00.00 HATCHED MEDIAN C/L  
 STA. 165+80.00 - STA. 171+00.00 HATCHED MEDIAN C/L

646.602 TEMPORARY 3 INCH WHITE LINE, PAINT  
 (ALL LINES WILL INCLUDE EDGE LINE BREAKS AND RADIUS FOR TOWN HIGHWAYS)  
 WOODSTOCK:  
 STA. 160+00.00 - STA. 176+00.00 LT & RT  
 STA. 164+20.00 - STA. 165+80.00 SOLID LINE LT  
 STA. 165+80.00 - STA. 167+50.00 DOTTED LINE LT

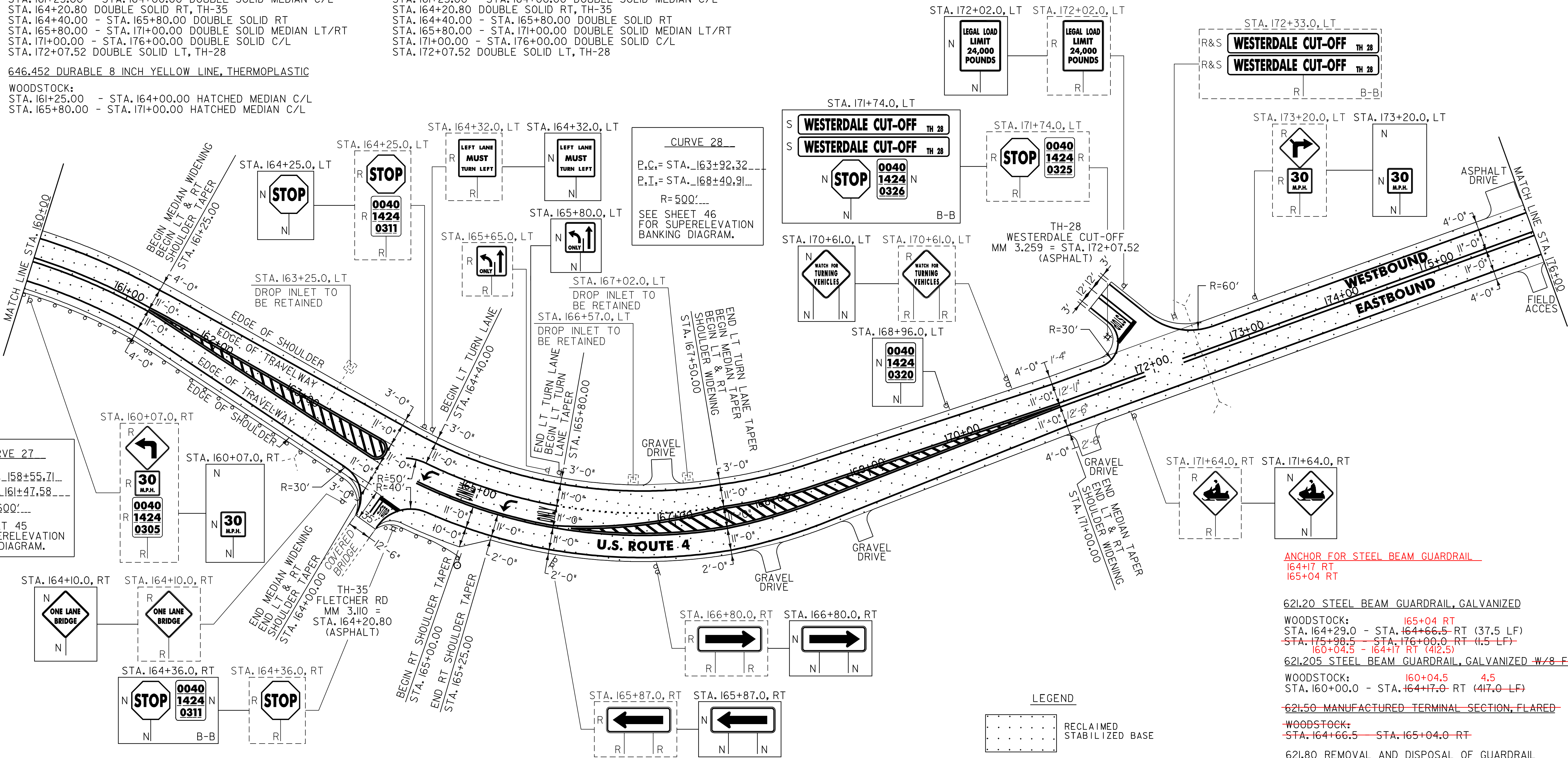
646.612 TEMPORARY 4 INCH YELLOW LINE, PAINT  
 (ALL LINES WILL INCLUDE C/L BREAKS FOR TOWN HIGHWAYS)  
 WOODSTOCK:  
 STA. 160+00.00 - STA. 161+25.00 DOUBLE SOLID C/L  
 STA. 161+25.00 - STA. 164+00.00 DOUBLE SOLID MEDIAN C/L  
 STA. 164+20.80 DOUBLE SOLID RT, TH-35  
 STA. 164+40.00 - STA. 165+80.00 DOUBLE SOLID RT  
 STA. 165+80.00 - STA. 171+00.00 DOUBLE SOLID MEDIAN LT/RT  
 STA. 171+00.00 - STA. 176+00.00 DOUBLE SOLID C/L  
 STA. 172+07.52 DOUBLE SOLID LT, TH-28

646.482 DURABLE 24 INCH STOP BAR, THERMOPLASTIC  
 WOODSTOCK:  
 STA. 164+20.80 RT, TH-35  
 STA. 172+07.52 LT, TH-28

646.492 DURABLE LETTER OR SYMBOL, THERMOPLASTIC  
 WOODSTOCK:  
 STA. 164+20.80 RT, TH-35, "S,T,O,P" (4 EA)  
 STA. 164+44.3 C/L, ARROW (1 EA)  
 STA. 164+88.2 C/L, "O,N,L,Y" (4 EA)  
 STA. 165+32.1 C/L, ARROW (1 EA)  
 STA. 165+75.9 C/L, "O,N,L,Y" (4 EA)  
 STA. 172+07.52 LT, TH-28, "S,T,O,P" (4 EA)

646.620 TEMPORARY 24 INCH STOP BAR, PAINT  
 WOODSTOCK:  
 STA. 164+20.80 RT, TH-35, "S,T,O,P" (8 EA)  
 STA. 164+44.3 C/L, ARROW (2 EA)  
 STA. 165+32.1 C/L, ARROW (2 EA)  
 STA. 172+07.52 LT, TH-28, "S,T,O,P" (8 EA)

675.50 REMOVING SIGNS  
 AS SHOWN - 20  
 675.60 ERECTING SALVAGED SIGNS  
 AS SHOWN - 2



**CURVE 27**  
 P.C. = STA. 158+55.71  
 P.T. = STA. 161+47.58  
 R = 600'  
 SEE SHEET 45 FOR SUPERELEVATION BANKING DIAGRAM.

**CURVE 28**  
 P.C. = STA. 163+92.32  
 P.T. = STA. 168+40.91  
 R = 500'  
 SEE SHEET 46 FOR SUPERELEVATION BANKING DIAGRAM.

ANCHOR FOR STEEL BEAM GUARDRAIL  
 164+17 RT  
 165+04 RT

621.20 STEEL BEAM GUARDRAIL, GALVANIZED  
 WOODSTOCK:  
 STA. 164+29.0 - STA. 164+66.5 RT (37.5 LF)  
 STA. 175+98.5 - STA. 176+00.0 RT (1.5 LF)  
 160+04.5 - 164+17 RT (412.5)  
 621.205 STEEL BEAM GUARDRAIL, GALVANIZED w/8 FEET POSTS  
 WOODSTOCK:  
 STA. 160+00.0 - STA. 164+17.0 RT (417.0 LF)

621.50 MANUFACTURED TERMINAL SECTION, FLARED  
 WOODSTOCK:  
 STA. 164+66.5 - STA. 165+04.0 RT  
 621.80 REMOVAL AND DISPOSAL OF GUARDRAIL  
 WOODSTOCK:  
 STA. 160+00.0 - STA. 164+17.0 RT (417.0 LF)  
 STA. 164+29.0 - STA. 164+65.0 RT (36.0 LF)

**LEGEND**  
 RECLAIMED STABILIZED BASE  
**SIGN LEGEND**  
 R = REMOVE  
 S = SALVAGE  
 N = NEW  
 RET = RETAIN  
 B-B = BACK TO BACK  
 EXISTING = - - - - -  
 NEW = \_\_\_\_\_

**NOT TO SCALE**  
**PROJECT LAYOUT SHEET #17**

PROJECT NAME: BRIDGEWATER - WOODSTOCK  
 PROJECT NUMBER: NH\_2611(S)  
 FILE NAME: p06b160.dgn  
 PROJECT LEADER: D.E.G.  
 DESIGNED BY: D.W.E.  
 IPARM FILE: p06b16017.i  
 PLOT DATE: 28-MAY-2010  
 DRAWN BY: C.A.K.  
 CHECKED BY: D.E.G.  
 SHEET 28 OF 80

NOTE:  
 1. PAVING LIMIT ON ALL TOWN HIGHWAYS SHALL BE MEASURED 25 FT BACK FROM U.S. ROUTE 4 EDGE OF SHOULDER UNLESS DENOTED OTHERWISE ON THE PLANS OR AS DIRECTED BY THE RESIDENT ENGINEER.

676.10 DELINEATOR WITH STEEL POST  
 ♀ TYPE 1 WHITE  
 WOODSTOCK:  
 STA. 165+04.0 RT