

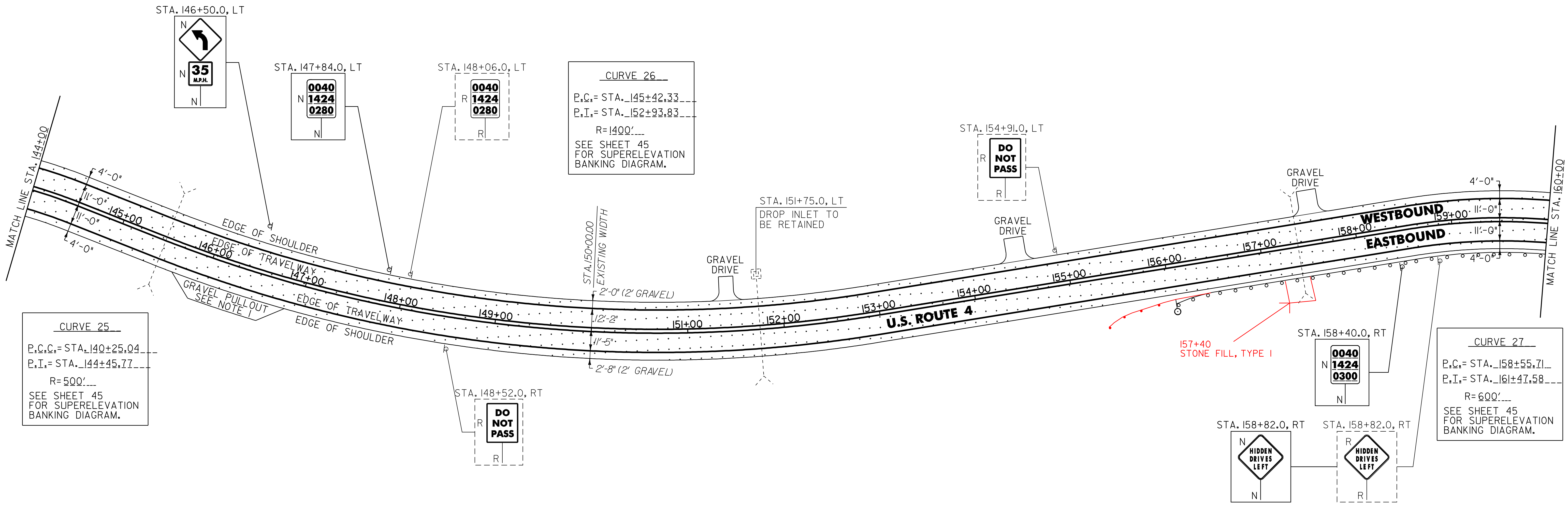
646.402 DURABLE 4 INCH WHITE LINE, THERMOPLASTIC
 (ALL LINES WILL INCLUDE EDGE LINE BREAKS AND
 RADIUS FOR TOWN HIGHWAYS)
 WOODSTOCK:
 STA. 144+00.00 - STA. 160+00.00 LT & RT

646.412 DURABLE 4 INCH YELLOW LINE, THERMOPLASTIC
 (ALL LINES WILL INCLUDE C/L BREAKS FOR
 TOWN HIGHWAYS) S=SOLID, D=DASHED
 WOODSTOCK:
 STA. 144+00.00 - STA. 160+00.00 LT C RT
 S - S

646.602 TEMPORARY 4 INCH WHITE LINE, PAINT
 (ALL LINES WILL INCLUDE EDGE LINE BREAKS AND
 RADIUS FOR TOWN HIGHWAYS)
 WOODSTOCK:
 STA. 144+00.00 - STA. 160+00.00 LT & RT

646.612 TEMPORARY 4 INCH YELLOW LINE, PAINT
 (ALL LINES WILL INCLUDE C/L BREAKS FOR
 TOWN HIGHWAYS) S=SOLID, D=DASHED
 WOODSTOCK:
 STA. 144+00.00 - STA. 160+00.00 LT C RT
 S - S

675.50 REMOVING SIGNS
 AS SHOWN - 4



CURVE 25
 P.C.C. = STA. 140+25.04
 P.T. = STA. 144+45.77
 R = 500'
 SEE SHEET 45
 FOR SUPERELEVATION
 BANKING DIAGRAM.

CURVE 26
 P.C. = STA. 145+42.33
 P.T. = STA. 152+93.83
 R = 1400'
 SEE SHEET 45
 FOR SUPERELEVATION
 BANKING DIAGRAM.

CURVE 27
 P.C. = STA. 158+55.71
 P.T. = STA. 161+47.58
 R = 600'
 SEE SHEET 45
 FOR SUPERELEVATION
 BANKING DIAGRAM.

621.205 STEEL BEAM GUARDRAIL, GALVANIZED W/8 FEET POSTS

WOODSTOCK:
 STA. 156+42.0 - STA. 160+00.0 RT (358.0 LF) 445.5
 155+54.5

621.50 MANUFACTURED TERMINAL SECTION, FLARED

WOODSTOCK:
 STA. 156+04.5 - STA. 156+42.0 RT
 155+17 155+54.5

621.80 REMOVAL AND DISPOSAL OF GUARDRAIL

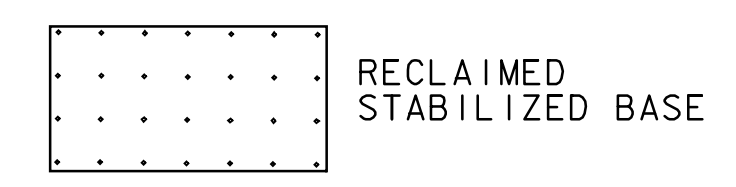
WOODSTOCK:
 STA. 156+52.0 - STA. 160+00.0 RT (348.0 LF)

676.10 DELINEATOR WITH STEEL POST

♀ TYPE 1 WHITE

WOODSTOCK:
 STA. 156+04.5 RT

LEGEND



SIGN LEGEND
 R = REMOVE
 S = SALVAGE
 N = NEW
 RET = RETAIN
 B-B = BACK TO BACK
 EXISTING = - - - - -
 NEW = _____

NOTE:

I. PROVIDE A 5 FT WIDE, 1 3/4" TYPE III APRON FOR THE EXISTING GRAVEL PULLOUT. ANY REQUIRED EXCAVATION SHALL BE PERFORMED AS DIRECTED BY THE RESIDENT ENGINEER AND PAID FOR UNDER ITEM 608.25 ALL PURPOSE EXCAVATOR RENTAL, TYPE I.

NOT TO SCALE

PROJECT LAYOUT SHEET #16

PROJECT NAME: BRIDGEWATER - WOODSTOCK
 PROJECT NUMBER: NH_2611(S)
 FILE NAME: p06b160.dgn
 PROJECT LEADER: D.E.G.
 DESIGNED BY: D.W.E.
 IPARM FILE: p06b160i16.i
 PLOT DATE: 28-MAY-2010
 DRAWN BY: C.A.K.
 CHECKED BY: D.E.G.
 SHEET 27 OF 80