

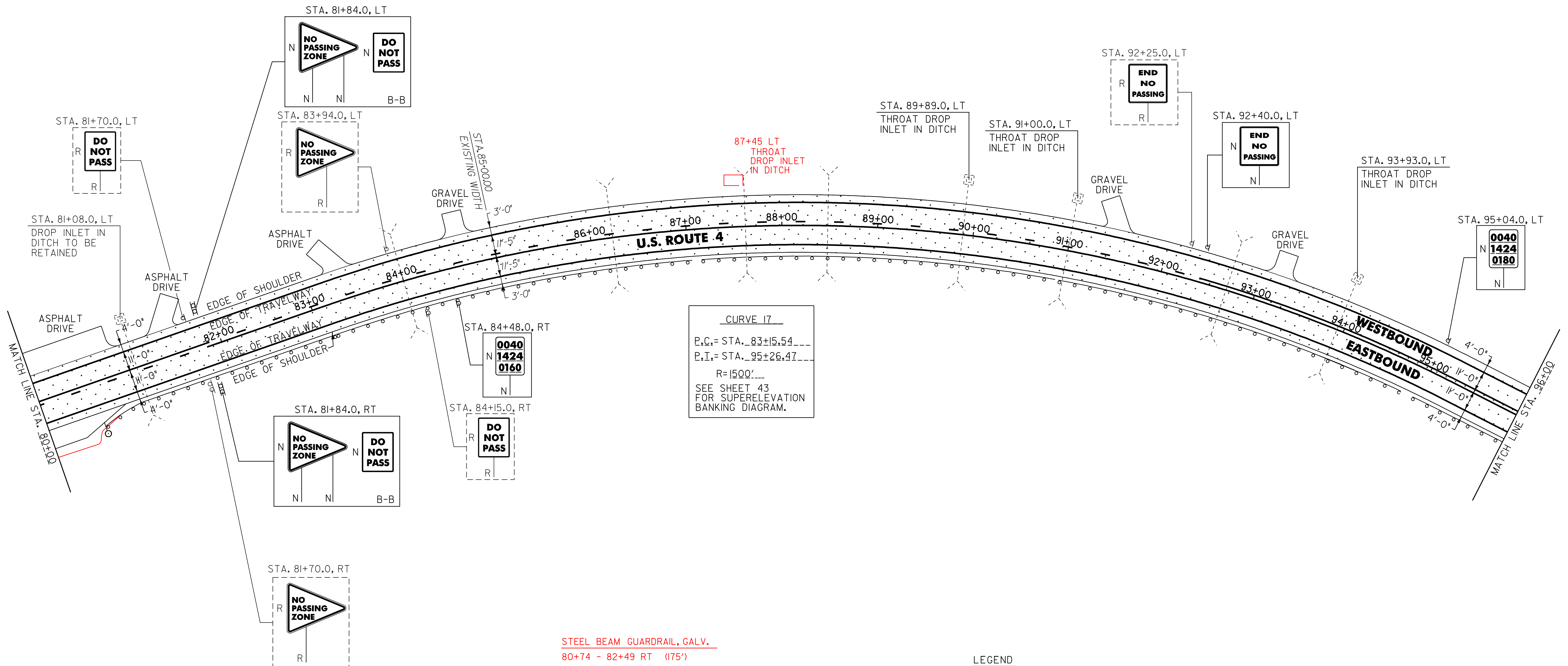
646.402 DURABLE 4 INCH WHITE LINE, THERMOPLASTIC
 (ALL LINES WILL INCLUDE EDGE LINE BREAKS AND RADIUS FOR TOWN HIGHWAYS)
 WOODSTOCK:
 STA. 80+00.00 - STA. 96+00.00 LT & RT

646.412 DURABLE 4 INCH YELLOW LINE, THERMOPLASTIC
 (ALL LINES WILL INCLUDE C/L BREAKS FOR TOWN HIGHWAYS) S=SOLID, D=DASHED
 WOODSTOCK:
 STA. 80+00.00 - STA. 81+84.00 S - D
 STA. 81+84.00 - STA. 92+40.00 D - S
 STA. 92+40.00 - STA. 96+00.00 S - S

646.602 TEMPORARY 4 INCH WHITE LINE, PAINT
 (ALL LINES WILL INCLUDE EDGE LINE BREAKS AND RADIUS FOR TOWN HIGHWAYS)
 WOODSTOCK:
 STA. 80+00.00 - STA. 96+00.00 LT & RT

646.612 TEMPORARY 4 INCH YELLOW LINE, PAINT
 (ALL LINES WILL INCLUDE C/L BREAKS FOR TOWN HIGHWAYS) S=SOLID, D=DASHED
 WOODSTOCK:
 STA. 80+00.00 - STA. 81+84.00 S - D
 STA. 81+84.00 - STA. 92+40.00 D - S
 STA. 92+40.00 - STA. 96+00.00 S - S

675.50 REMOVING SIGNS
 AS SHOWN - 5



CURVE 17
 P.C. = STA. 83+15.54
 P.T. = STA. 95+26.47
 R = 1500'
 SEE SHEET 43 FOR SUPERELEVATION BANKING DIAGRAM.

STEEL BEAM GUARDRAIL, GALV.
 80+74 - 82+49 RT (175')

LEGEND
 [Dotted Box] RECLAIMED STABILIZED BASE

604.412 REHAB. DROP INLETS, CATCH BASINS OR MANHOLE, CLASS I
 WOODSTOCK:
 STA. 89+89.0 LT 87+45 LT
 STA. 91+00.0 LT
 STA. 93+93.0 LT

621.205 STEEL BEAM GUARDRAIL, GALVANIZED W/8 FEET POSTS
 WOODSTOCK:
 STA. 81+24.0 - STA. 96+00.0 RT (1476.0 LF)
 82+49 1351
 80+00 - 80+74 RT (76.0 LF)

~~621.50 MANUFACTURED TERMINAL SECTION, FLARED~~
~~WOODSTOCK:~~
~~STA. 80+86.5 - STA. 81+24.0 RT~~

621.80 REMOVAL AND DISPOSAL OF GUARDRAIL
 WOODSTOCK:
 STA. 80+87.0 - STA. 96+00.0 RT (1513.0 LF)

676.10 DELINEATOR WITH STEEL POST
 ♀ TYPE I WHITE
 WOODSTOCK:
 STA. 80+86.5 RT

SIGN LEGEND
 R = REMOVE
 S = SALVAGE
 N = NEW
 RET = RETAIN
 B-B = BACK TO BACK
 EXISTING = -----
 NEW = -----

NOT TO SCALE

PROJECT LAYOUT SHEET #12

PROJECT NAME: BRIDGEWATER - WOODSTOCK	PLOT DATE: 28-MAY-2010
PROJECT NUMBER: NH_2611(S)	DRAWN BY: C.A.K.
FILE NAME: p06b160.dgn	CHECKED BY: D.E.G.
DESIGNED BY: D.W.E.	SHEET 23 OF 80
IPARM FILE: p06b16012.i	