

**203.16 SOLID ROCK EXCAVATION**

STA. 82+88 - STA. 83+06 RT  
 STA. 82+92 - STA. 83+02 LT  
 STA. 82+92 - STA. 83+02 LT

**604.412, 604.415, 604.418 REHAB. DROP INLETS, CATCH BASINS, OR MANHOLES, CLASS I, CLASS II OR CLASS III**

STA. 81+91 RT "TYPE D GRATE"  
 STA. 81+92 LT "TYPE D GRATE"

**604.42 CHANGING ELEVATION OF SEWER MANHOLES**

STA. 81+42 RT  
 STA. 82+44 RT

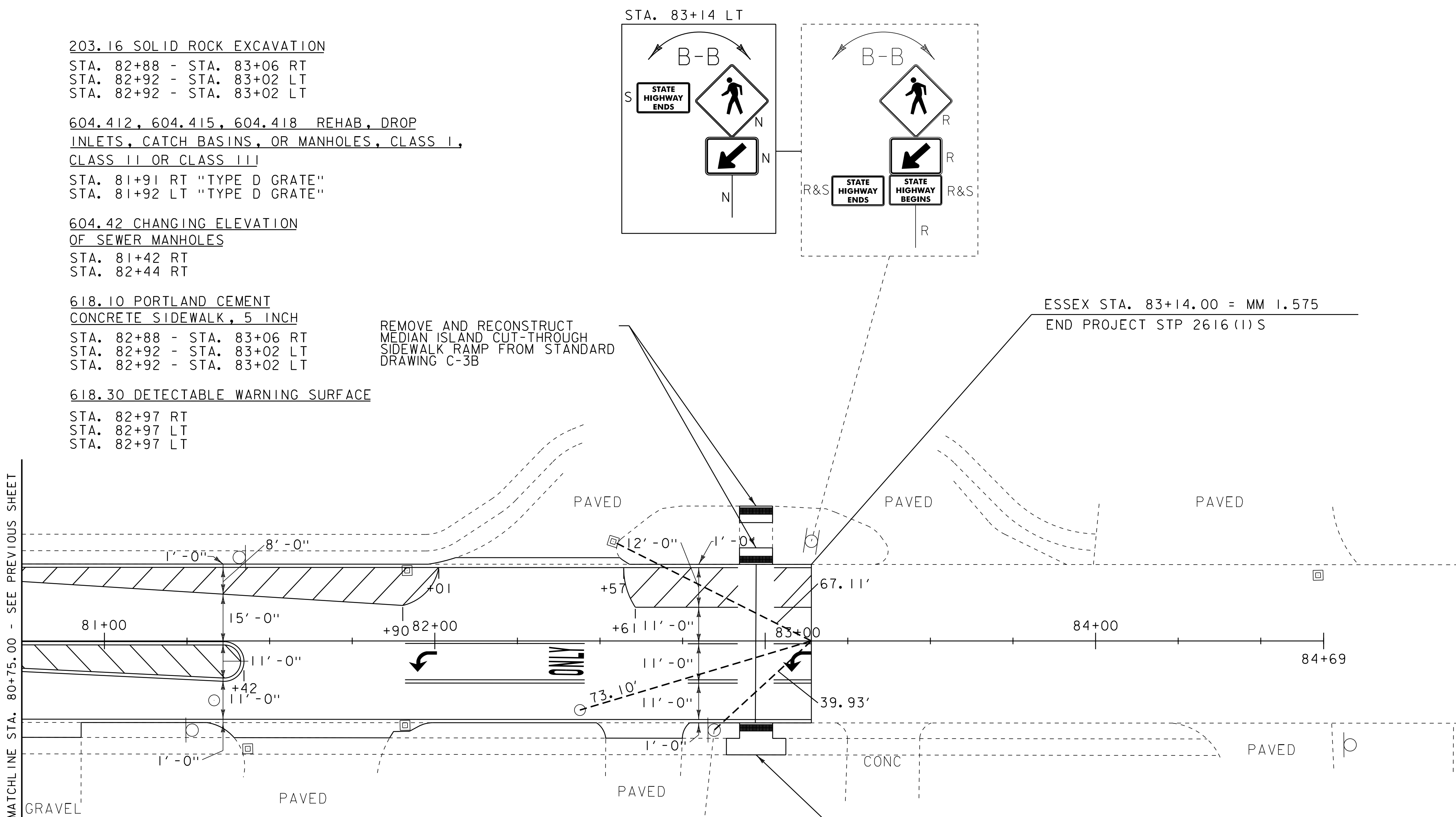
**618.10 PORTLAND CEMENT CONCRETE SIDEWALK, 5 INCH**

STA. 82+88 - STA. 83+06 RT  
 STA. 82+92 - STA. 83+02 LT  
 STA. 82+92 - STA. 83+02 LT

**618.30 DETECTABLE WARNING SURFACE**

STA. 82+97 RT  
 STA. 82+97 LT  
 STA. 82+97 LT

REMOVE AND RECONSTRUCT  
 MEDIAN ISLAND CUT-THROUGH  
 SIDEWALK RAMP FROM STANDARD  
 DRAWING C-3B



ESSEX STA. 83+14.00 = MM 1.575  
 END PROJECT STP 2616 (I) S

MATCHLINE STA. 80+75.00 - SEE PREVIOUS SHEET

**646.402 DURABLE 4" WHITE LINE, THERMOPLASTIC**

STA. 80+75 - STA. 83+14 (SOLID LT & RT)  
 STA. 80+75 - STA. 82+01 (SOLID LT)  
 STA. 81+91 - STA. 82+45 (SOLID RT)  
 STA. 82+57 - STA. 83+14 (SOLID LT, WITH BREAK AT CROSSWALK)  
 STA. 82+77 - STA. 83+14 (SOLID RT, WITH BREAK AT CROSSWALK)

**646.602 TEMPORARY 4" WHITE LINE, PAINT**

STA. 80+75 - STA. 83+14 (SOLID LT & RT)  
 STA. 80+75 - STA. 82+01 (SOLID LT)  
 STA. 81+91 - STA. 82+45 (SOLID RT)  
 STA. 82+57 - STA. 83+14 (SOLID LT, WITH BREAK AT CROSSWALK)  
 STA. 82+77 - STA. 83+14 (SOLID RT, WITH BREAK AT CROSSWALK)

**646.412 DURABLE 4" YELLOW LINE, THERMOPLASTIC**

STA. 80+75 - STA. 81+42 (SOLID LT & RT, CENTERLINE)  
 STA. 80+75 - STA. 81+42 (SOLID RT, CENTERLINE)  
 STA. 81+91 - STA. 82+40 (SOLID RT, CENTERLINE)  
 STA. 82+77 - STA. 83+22 (SOLID RT, CENTERLINE, WITH BREAK AT CROSSWALK)

**646.612 TEMPORARY 4" YELLOW LINE, PAINT**

STA. 80+75 - STA. 81+42 (SOLID LT & RT, CENTERLINE)  
 STA. 80+75 - STA. 81+42 (SOLID RT, CENTERLINE)  
 STA. 81+91 - STA. 82+40 (SOLID RT, CENTERLINE)  
 STA. 82+77 - STA. 83+22 (SOLID RT, CENTERLINE, WITH BREAK AT CROSSWALK)

**646.442 DURABLE 8" WHITE LINE, THERMOPLASTIC**

STA. 80+75 - STA. 82+01 (HATCHED LT)  
 STA. 82+57 - STA. 83+14 (HATCHED LT, WITH BREAK AT CROSSWALK)

**646.642 TEMPORARY 8" WHITE LINE, PAINT**

STA. 80+75 - STA. 82+01 (HATCHED LT)  
 STA. 82+57 - STA. 83+14 (HATCHED LT, WITH BREAK AT CROSSWALK)

**646.452 DURABLE 8" YELLOW LINE, THERMOPLASTIC**

STA. 80+75 - STA. 81+42 (HATCHED RT)

**646.652 TEMPORARY 8" YELLOW LINE, PAINT**

STA. 80+75 - STA. 81+42 (HATCHED RT)

**646.492 DURABLE LETTER OR SYMBOL, THERMOPLASTIC**

STA. 81+97 RT ARROW  
 STA. 82+42 RT "ONLY"  
 STA. 83+09 RT ARROW

**646.692 TEMPORARY LETTER OR SYMBOL, PAINT**

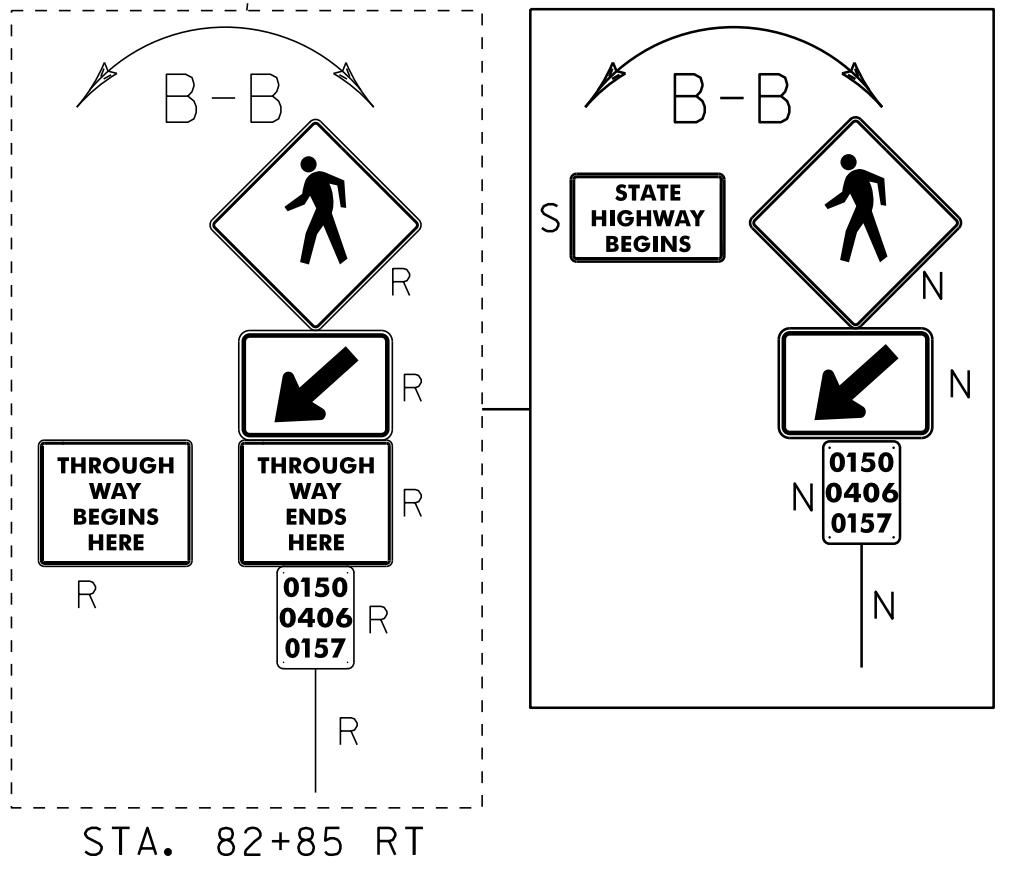
STA. 81+97 RT ARROW  
 STA. 82+42 RT "ONLY"  
 STA. 83+09 RT ARROW

**646.502 DURABLE CROSSWALK MARKING, THERMOPLASTIC**

STA. 82+97 (LT & RT)

REMOVE AND RECONSTRUCT  
 SIDEWALK RAMP TYPE 2  
 FROM STANDARD DRAWING C-3A

SEE REVISED SHEET



**646.702 TEMPORARY CROSSWALK MARKING, PAINT**

STA. 82+97 (LT & RT)

**675.50 REMOVING SIGNS**

AS SHOWN - 9

**675.60 ERECTING SALVAGED SIGNS**

AS SHOWN - 2

**LEGEND**

⊙	HYDRANT		
○	MANHOLE		
⊖	WATER VALVE		
⊕	GAS PIPELINE MARKER		
⊠	CATCH BASIN / DROP INLET		
—	CURB INLET		
⊞	TRAFFIC CONTROL BOX		
⊕	RAILROAD CROSSING SIGNAL		
		<b>SIGN LEGEND</b>	
		R = REMOVE	
		R&S = REMOVE AND SALVAGE	
		RET = RETAIN	
		S = SALVAGE	
		N = NEW	
		B-B = BACK TO BACK	

DATUM	
VERTICAL	N/A
HORIZONTAL	N/A

NOT TO SCALE

<b>PROJECT LAYOUT SHEET 27</b>	PROJECT NAME: COLCHESTER-ESSEX
	PROJECT NUMBER: STP 2616(I)S
	FILE NAME: p06b062.dgn
	PLOT FILE: p06b062pl27.i
DESIGNED BY: CDL	DRAWN BY: SJL
CHECKED BY: EPD	
PLOT DATE: 30-OCT-2012 12:00	
SHEET 35 OF \$SH\$	