

**203.16 SOLID ROCK EXCAVATION**

STA. 29+67 - STA. 29+76 LT  
 STA. 30+45 - STA. 30+54 LT  
 STA. 31+04 - STA. 31+14 LT  
 STA. 31+53 - STA. 31+68 LT

**618.10 PORTLAND CEMENT CONCRETE SIDEWALK, 5 INCH**

STA. 29+67 - STA. 29+76 LT  
 STA. 30+45 - STA. 30+54 LT  
 STA. 31+04 - STA. 31+14 LT  
 STA. 31+53 - STA. 31+68 LT

**618.30 DETECTABLE WARNING SURFACE**

STA. 29+72 LT  
 STA. 30+47 LT  
 STA. 31+09 LT  
 STA. 31+57 LT

**646.482 DURABLE 24" STOP BAR, THERMOPLASTIC**

STA. 29+64 RT  
 STA. 29+82 - STA. 30+10 LT  
 STA. 30+13 - STA. 30+25 LT  
 STA. 30+60 LT  
 STA. 30+60 LT

**646.682 TEMPORARY 24" STOP BAR, PAINT**

STA. 29+64 RT  
 STA. 29+82 - STA. 30+10 LT  
 STA. 30+13 - STA. 30+25 LT  
 STA. 30+60 LT  
 STA. 30+60 LT

**646.692 TEMPORARY LETTER OR SYMBOL, PAINT**

STA. 27+94 RT ARROW  
 STA. 27+94 RT ARROW  
 STA. 28+74 RT "ONLY"  
 STA. 28+74 RT "ONLY"  
 STA. 29+54 RT ARROW  
 STA. 29+54 RT ARROW  
 STA. 29+93 LT ARROW  
 STA. 30+05 LT ARROW  
 STA. 30+20 LT ARROW  
 STA. 30+69 LT "STOP"  
 STA. 30+90 LT YIELD MARKERS

**646.492 DURABLE LETTER OR SYMBOL, THERMOPLASTIC**

STA. 27+94 RT ARROW  
 STA. 27+94 RT ARROW  
 STA. 28+74 RT "ONLY"  
 STA. 28+74 RT "ONLY"  
 STA. 29+54 RT ARROW  
 STA. 29+54 RT ARROW  
 STA. 29+93 LT ARROW  
 STA. 30+05 LT ARROW  
 STA. 30+20 LT ARROW  
 STA. 30+69 LT "STOP"  
 STA. 30+90 LT YIELD MARKERS

**646.502 DURABLE CROSSWALK MARKING, THERMOPLASTIC**

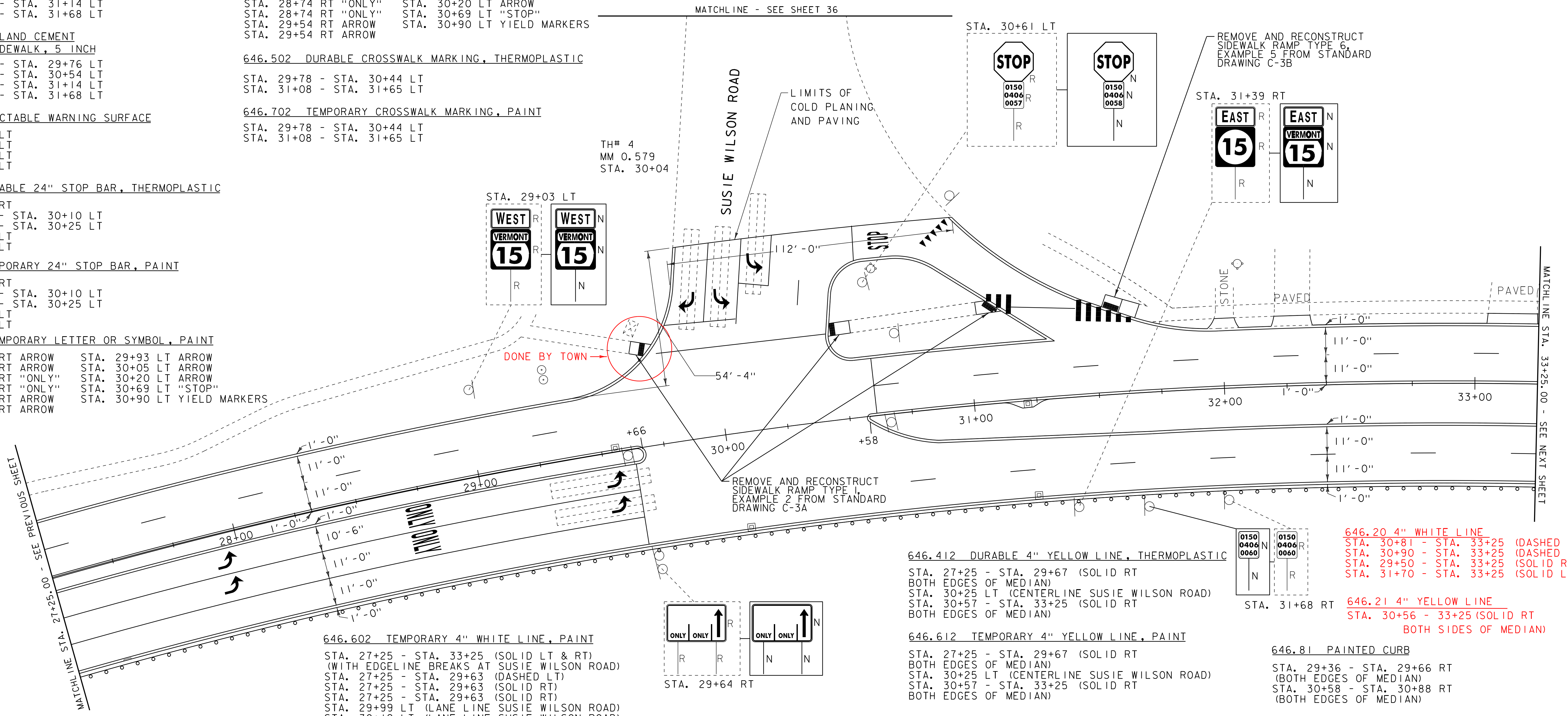
STA. 29+78 - STA. 30+44 LT  
 STA. 31+08 - STA. 31+65 LT

**646.702 TEMPORARY CROSSWALK MARKING, PAINT**

STA. 29+78 - STA. 30+44 LT  
 STA. 31+08 - STA. 31+65 LT

TH# 4  
 MM 0.579  
 STA. 30+04

MATCHLINE - SEE SHEET 36



MATCHLINE STA. 27+25.00 - SEE PREVIOUS SHEET

MATCHLINE STA. 33+25.00 - SEE NEXT SHEET

**604.412, 604.415, 604.418 REHAB, DROP INLETS, CATCH BASINS, OR MANHOLES, CLASS I, CLASS II OR CLASS III**

STA. 27+45 RT "TYPE D GRATE"  
 STA. 29+55 LT "TYPE D GRATE"  
 STA. 30+05 RT "TYPE D GRATE"  
 STA. 31+21 RT "TYPE D GRATE"  
 STA. 31+23 RT "TYPE D GRATE"  
 STA. 31+23 RT "TYPE D GRATE"

**646.402 DURABLE 4" WHITE LINE, THERMOPLASTIC**

STA. 27+25 - STA. 33+25 (SOLID LT & RT) (WITH EDGELINE BREAKS AT SUSIE WILSON ROAD)  
 STA. 27+25 - STA. 29+63 (DASHED LT)  
 STA. 27+25 - STA. 29+63 (SOLID RT)  
 STA. 27+25 - STA. 29+63 (SOLID RT)  
 STA. 29+99 LT (LANE LINE SUSIE WILSON ROAD)  
 STA. 30+12 LT (LANE LINE SUSIE WILSON ROAD)  
 STA. 30+35 (DASHED LT) (SUSIE WILSON ROAD)  
 STA. 30+61 - STA. 33+25 (DASHED LT & RT)

**VIDEO VEHICLE DETECTION SYSTEM EQUIPMENT LIST**

LIST OF MAJOR EQUIPMENT		QUANTITY
ITEM # 900.620, SPECIAL PROVISION (VIDEO VEHICLE DETECTION SYSTEM) (VT ROUTE 15 @ SUSIE WILSON RD.)		
ENCOM MODEL EP-5200,RS-232, SHELF MOUNT RADIO		1
YAGI ANTENNA, 8.5 DB, 900 MHZ		1
LIGHTNING PROTECTION		1
6' RF JUMPER CABLE		1
ENCOM DATA CABLE, CB-81		1
LMR COAXIAL CABLE, CB-1055		1
ECONOLITE ASC/3-2100 CONTROLLER		1
ECONOLITE AUTOSCOPE SOLO - VIDEO DETECTION		3

**VIDEO VEHICLE DETECTION SYSTEM NOTES:**

- 1) NEW ECONOLITE ASC/3-2100 CONTROLLER TO REPLACE EXISTING MODEL 8000 CONTROLLER.
- 2) VIDEO VEHICLE DETECTORS SHALL BE PLACED SO THAT OCCLUSION IS MINIMIZED AND PHASING IS NOT AFFECTED.
- 3) VIDEO VEHICLE DETECTION AREAS SHALL EXTEND 5 FEET PAST THE STOP BAR.
- 4) THE CONTRACTOR SHALL VERIFY IN THE FIELD THAT THERE IS ADEQUATE SPACE IN THE CONDUIT AND CONTROLLER FOR VIDEO VEHICLE DETECTION CABLE AND EQUIPMENT.

**LEGEND**

- HYDRANT
- MANHOLE
- WATER VALVE
- GAS PIPELINE MARKER
- CATCH BASIN / DROP INLET
- CURB INLET
- ⊠ TRAFFIC CONTROL BOX
- ⊕ RAILROAD CROSSING SIGNAL

**SIGN LEGEND**

- R = REMOVE
- R&S = REMOVE AND SALVAGE
- RET = RETAIN
- S = SALVAGE
- N = NEW
- B-B = BACK TO BACK

**646.81 PAINTED CURB**

STA. 29+36 - STA. 29+66 RT (BOTH EDGES OF MEDIAN)  
 STA. 30+58 - STA. 30+88 RT (BOTH EDGES OF MEDIAN)

**646.82 PAINTED ISLAND**

STA. 29+42 - STA. 29+67 RT

**675.50 REMOVING SIGNS AS SHOWN - 8**

**646.412 DURABLE 4" YELLOW LINE, THERMOPLASTIC**

STA. 27+25 - STA. 29+67 (SOLID RT BOTH EDGES OF MEDIAN)  
 STA. 30+25 LT (CENTERLINE SUSIE WILSON ROAD)  
 STA. 30+57 - STA. 33+25 (SOLID RT BOTH EDGES OF MEDIAN)

**646.612 TEMPORARY 4" YELLOW LINE, PAINT**

STA. 27+25 - STA. 29+67 (SOLID RT BOTH EDGES OF MEDIAN)  
 STA. 30+25 LT (CENTERLINE SUSIE WILSON ROAD)  
 STA. 30+57 - STA. 33+25 (SOLID RT BOTH EDGES OF MEDIAN)

**646.20 4" WHITE LINE**  
 STA. 30+81 - STA. 33+25 (DASHED RT)  
 STA. 30+90 - STA. 33+25 (DASHED LT)  
 STA. 29+50 - STA. 33+25 (SOLID RT)  
 STA. 31+70 - STA. 33+25 (SOLID LT)

**646.21 4" YELLOW LINE**  
 STA. 30+56 - 33+25 (SOLID RT BOTH SIDES OF MEDIAN)

**DATUM**

VERTICAL	N/A
HORIZONTAL	N/A

STA. 27+25 - STA. 29+90 (SOLID LT)

NOT TO SCALE

**PROJECT LAYOUT SHEET 18**

PROJECT NAME:	COLCHESTER-ESSEX
PROJECT NUMBER:	STP 2616(I)S
FILE NAME:	p06b062.dgn
PROJECT LEADER:	EPD
DESIGNED BY:	CDL
PLOT FILE:	p06b062p118.i
PLOT DATE:	30-OCT-2012 12:0
DRAWN BY:	SJL
CHECKED BY:	EPD
SHEET	26 OF \$SH\$