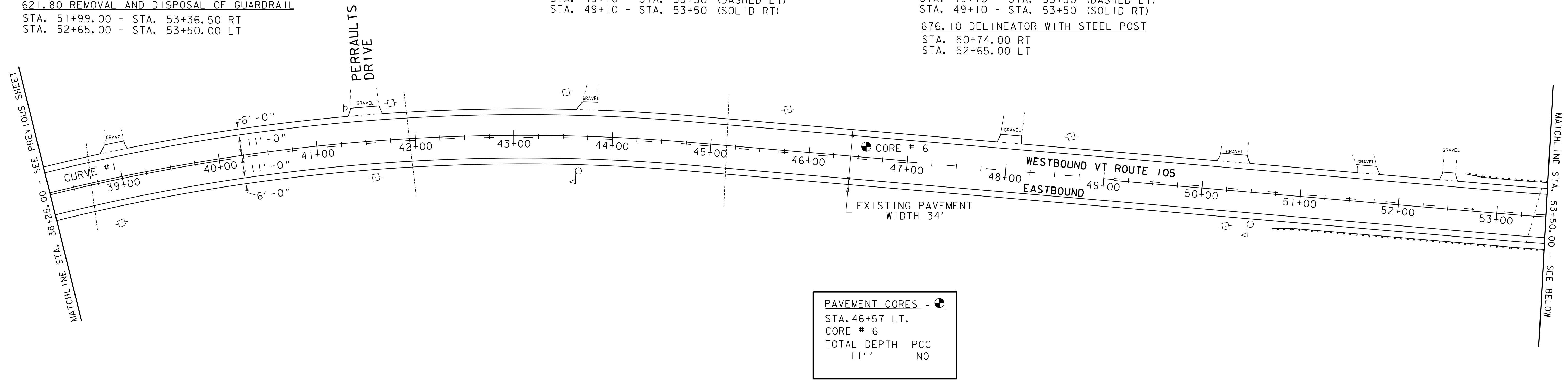


621.20 STEEL BEAM GUARDRAIL, GALVANIZED
 STA. 51+11.50 - STA. 52+86.50 RT
 621.50 MANUFACTURED TERMINAL SECTION, FLARED
 STA. 50+74.00 - STA. 51+11.50 RT
 STA. 52+65.00 - STA. 53+02.50 LT
 621.70 GUARDRAIL APPROACH SECTION, GALVANIZED TYPE I
 STA. 52+86.50 - STA. 53+36.50 RT
 STA. 53+02.50 - STA. 53+50.00 LT
 621.80 REMOVAL AND DISPOSAL OF GUARDRAIL
 STA. 51+99.00 - STA. 53+36.50 RT
 STA. 52+65.00 - STA. 53+50.00 LT

646.20 4 INCH WHITE LINE
~~646.402 DURABLE 4" WHITE LINE, THERMOPLASTIC~~
 STA. 38+25 - STA. 53+50 (SOLID LT & RT)
 646.21 4 INCH YELLOW LINE
~~646.412 DURABLE 4" YELLOW LINE, THERMOPLASTIC~~
 STA. 38+25 - STA. 40+13 (SOLID RT)
 STA. 38+25 - STA. 46+99 (SOLID LT)
 STA. 40+13 - STA. 46+99 (DASHED RT)
 STA. 46+99 - STA. 49+10 (DASHED RT)
 STA. 49+10 - STA. 53+50 (DASHED LT)
 STA. 49+10 - STA. 53+50 (SOLID RT)

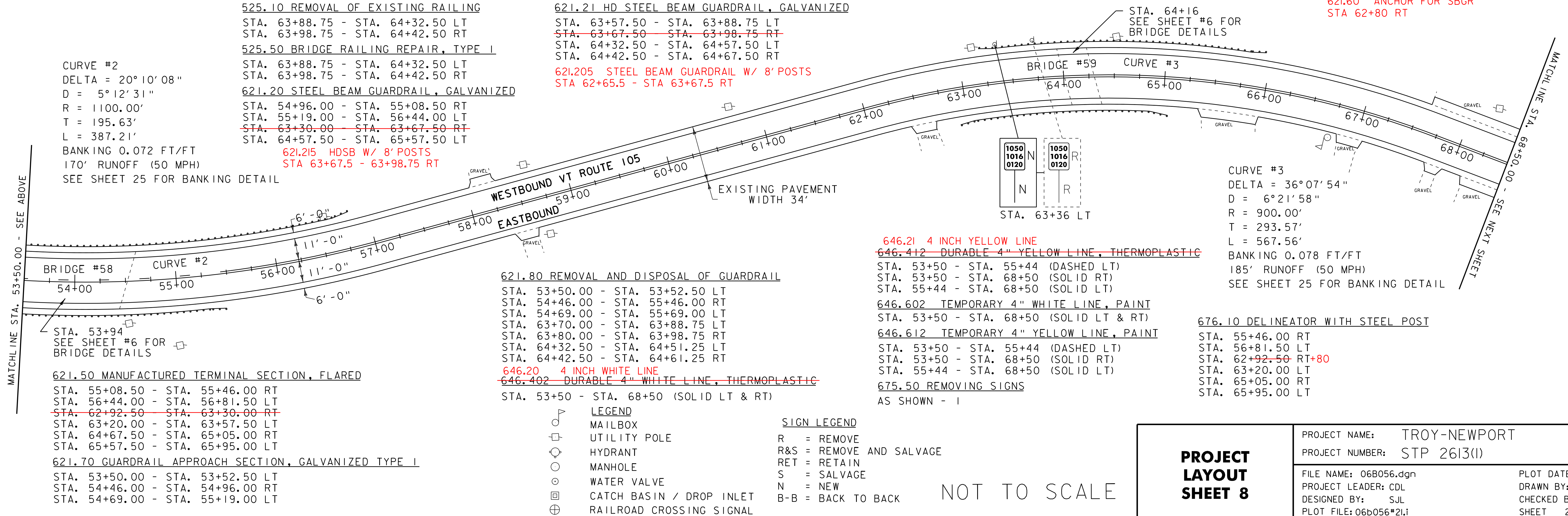
646.602 TEMPORARY 4" WHITE LINE, PAINT
 STA. 38+25 - STA. 53+50 (SOLID LT & RT)
 646.612 TEMPORARY 4" YELLOW LINE, PAINT
 STA. 38+25 - STA. 40+13 (SOLID RT)
 STA. 38+25 - STA. 46+99 (SOLID LT)
 STA. 40+13 - STA. 46+99 (DASHED RT)
 STA. 46+99 - STA. 49+10 (DASHED RT)
 STA. 49+10 - STA. 53+50 (DASHED LT)
 STA. 49+10 - STA. 53+50 (SOLID RT)
 676.10 DELINEATOR WITH STEEL POST
 STA. 50+74.00 RT
 STA. 52+65.00 LT



CURVE #2
 DELTA = 20°10'08"
 D = 5°12'31"
 R = 1100.00'
 T = 195.63'
 L = 387.21'
 BANKING 0.072 FT/FT
 170' RUNOFF (50 MPH)
 SEE SHEET 25 FOR BANKING DETAIL

525.10 REMOVAL OF EXISTING RAILING
 STA. 63+88.75 - STA. 64+32.50 LT
 STA. 63+98.75 - STA. 64+42.50 RT
 525.50 BRIDGE RAILING REPAIR, TYPE I
 STA. 63+88.75 - STA. 64+32.50 LT
 STA. 63+98.75 - STA. 64+42.50 RT
 621.20 STEEL BEAM GUARDRAIL, GALVANIZED
 STA. 54+96.00 - STA. 55+08.50 RT
 STA. 55+19.00 - STA. 56+44.00 LT
~~STA. 63+30.00 - STA. 63+67.50 RT~~
 STA. 64+57.50 - STA. 65+57.50 LT
 621.215 HDSB W/ 8' POSTS
 STA 63+67.5 - 63+98.75 RT

621.21 HD STEEL BEAM GUARDRAIL, GALVANIZED
 STA. 63+57.50 - STA. 63+88.75 LT
~~STA. 63+67.50 - STA. 63+98.75 RT~~
 STA. 64+32.50 - STA. 64+57.50 LT
 STA. 64+42.50 - STA. 64+67.50 RT
 621.205 STEEL BEAM GUARDRAIL W/ 8' POSTS
 STA 62+65.5 - STA 63+67.5 RT



621.80 REMOVAL AND DISPOSAL OF GUARDRAIL
 STA. 53+50.00 - STA. 53+52.50 LT
 STA. 54+46.00 - STA. 55+46.00 RT
 STA. 54+69.00 - STA. 55+69.00 LT
 STA. 63+70.00 - STA. 63+88.75 LT
 STA. 63+80.00 - STA. 63+98.75 RT
 STA. 64+32.50 - STA. 64+51.25 LT
 STA. 64+42.50 - STA. 64+61.25 RT

646.21 4 INCH YELLOW LINE
~~646.412 DURABLE 4" YELLOW LINE, THERMOPLASTIC~~
 STA. 53+50 - STA. 55+44 (DASHED LT)
 STA. 53+50 - STA. 68+50 (SOLID RT)
 STA. 55+44 - STA. 68+50 (SOLID LT)
 646.602 TEMPORARY 4" WHITE LINE, PAINT
 STA. 53+50 - STA. 68+50 (SOLID LT & RT)
 646.612 TEMPORARY 4" YELLOW LINE, PAINT
 STA. 53+50 - STA. 55+44 (DASHED LT)
 STA. 53+50 - STA. 68+50 (SOLID RT)
 STA. 55+44 - STA. 68+50 (SOLID LT)
 675.50 REMOVING SIGNS
 AS SHOWN - I

676.10 DELINEATOR WITH STEEL POST
 STA. 55+46.00 RT
 STA. 56+81.50 LT
 STA. 62+92.50 RT+80
 STA. 63+20.00 LT
 STA. 65+05.00 RT
 STA. 65+95.00 LT

- LEGEND
- MAILBOX
 - UTILITY POLE
 - HYDRANT
 - MANHOLE
 - WATER VALVE
 - CATCH BASIN / DROP INLET
 - ⊕ RAILROAD CROSSING SIGNAL
- SIGN LEGEND
- R = REMOVE
 - R&S = REMOVE AND SALVAGE
 - RET = RETAIN
 - S = SALVAGE
 - N = NEW
 - B-B = BACK TO BACK

NOT TO SCALE

PROJECT LAYOUT SHEET 8

PROJECT NAME: TROY-NEWPORT	PLOT DATE: 25-OCT-2011 12:18
PROJECT NUMBER: STP 2613(I)	DRAWN BY: SJL
FILE NAME: 06B056.dgn	CHECKED BY: EPD
DESIGNED BY: SJL	SHEET 21 OF 31
PLOT FILE: 06b056*21.i	