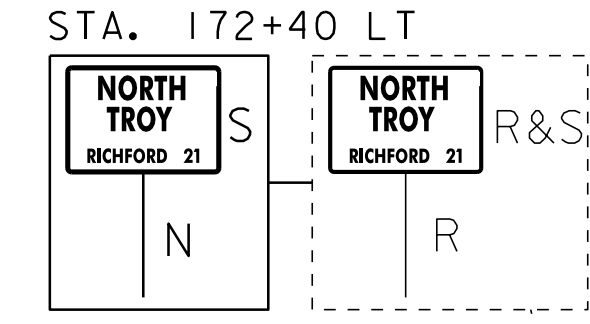
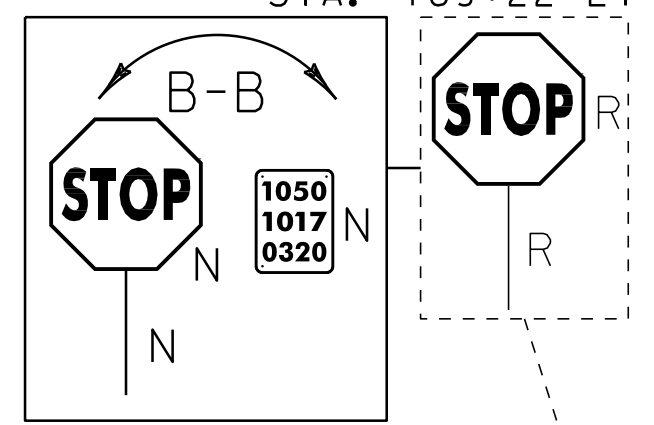
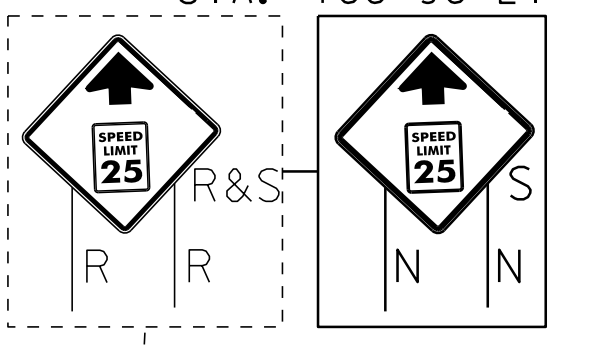
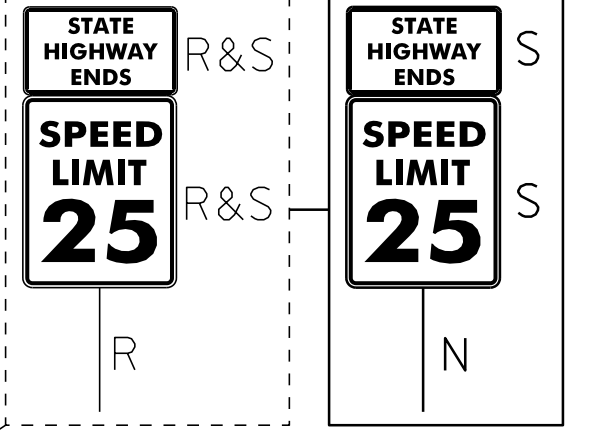


BEGIN PROJECT STP 2613 (I) S
STA. 163+57.44 MM 3.098



646.602 TEMPORARY 4" WHITE LINE, PAINT
STA. 163+57.44 - STA. 178+75 (SOLID LT & RT)

646.612 TEMPORARY 4" YELLOW LINE, PAINT
STA. 163+57.44 - STA. 178+75 (SOLID LT & RT, CENTERLINE)

CURVE #2
DELTA = 10°44'17"
D = 1°21'51"
R = 4200.00'
T = 394.72'
L = 787.13'
BANKING 0.020 FT/FT
125' RUNOFF (40 MPH)
SEE SHEET 24 FOR BANKING DETAIL

~~604.412, 604.415, 604.418 REHAB, DROP INLETS, CATCH BASINS, OR MANHOLES, CLASS I, CLASS II OR CLASS III~~
STA. 163+91 RT STA. 163+92 LT

~~604.40 CHANGING ELEVATION OF DROP INLETS, CATCH BASINS, OR MANHOLES~~
STA 163+91 RT
STA 191+60 LT

CURVE #1
DELTA = 10°03'05"
D = 2°07'19"
R = 2700.00'
T = 237.44'
L = 473.66'
BANKING 0.028 FT/FT
125' RUNOFF (40 MPH)
SEE SHEET 24 FOR BANKING DETAIL

DEER SIGN NOT MISSING
SIGN MISSING

675.50 REMOVING SIGNS
AS SHOWN - 8-9

675.60 ERECTING SALVAGED SIGNS
AS SHOWN - 7

621.20 STEEL BEAM GUARDRAIL, GALVANIZED
183+09.5 STA. 182+35.50 - STA. 186+98.00 RT 184+34.5
193+01.5 STA. 191+39.00 - STA. 192+14.00 RT 193+14
186+09.5 - 186+99 RT

646.412 DURABLE 4" YELLOW LINE, THERMOPLASTIC
STA. 178+75 - STA. 194+25 (SOLID LT & RT, CENTERLINE, WITH BREAKS AT TOWN ROADS)
STA. 192+73 (CENTERLINE, TH #40)

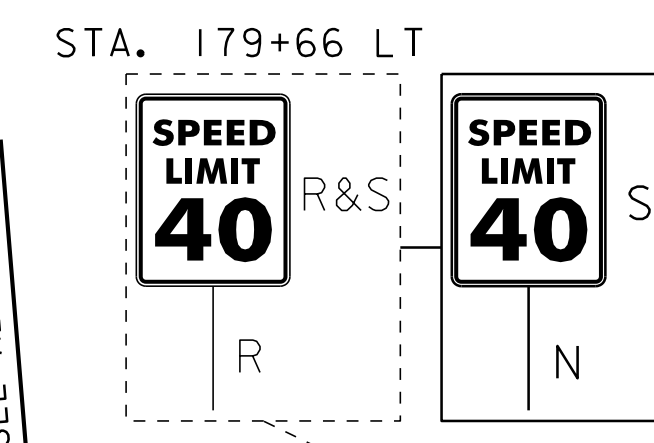
646.492 DURABLE LETTER OR SYMBOL, THERMOPLASTIC
STA. 187+97 RT "STOP"
STA. 188+25 RT "STOP"

675.50 REMOVING SIGNS AS SHOWN - 13

675.60 ERECTING SALVAGED SIGNS AS SHOWN - 7-6

621.60 ANCHOR FOR STEEL BEAM RAIL
STA. 182+35.50 RT
STA. 186+85.50 RT
STA. 193+00.50 RT
STA. 193+13.00 RT

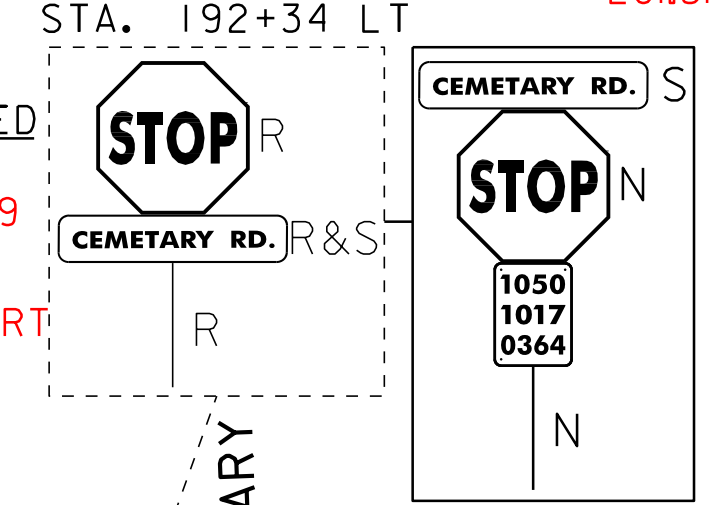
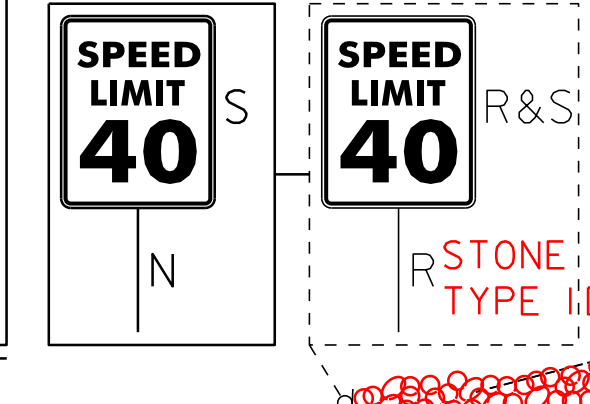
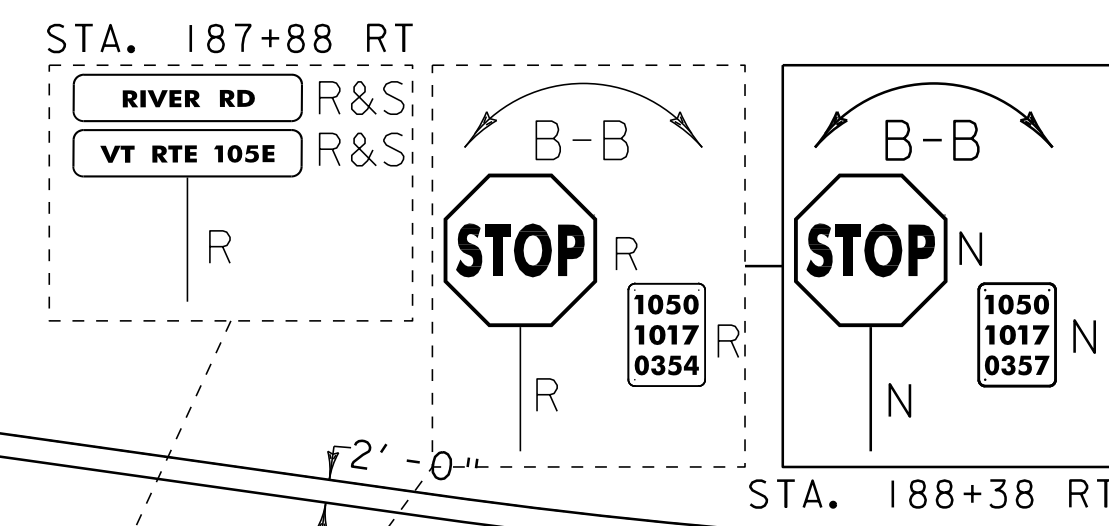
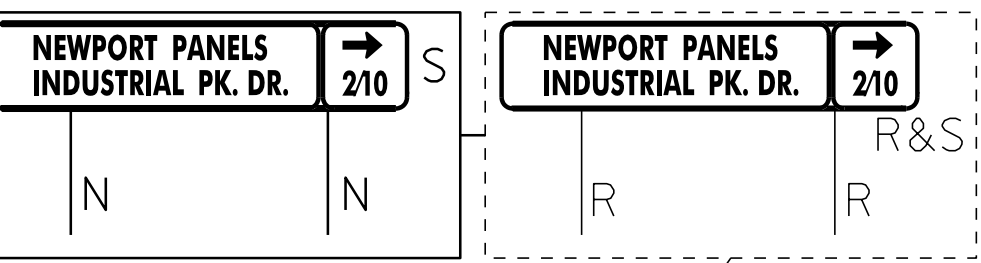
201.31 THINNING AND TRIMMING FOR SIGNS
192+34 LT



646.482 DURABLE 24" STOP BAR, THERMOPLASTIC
STA. 187+89 RT
STA. 188+15 - STA. 188+33 RT
STA. 192+41 - STA. 192+74 LT

646.682 TEMPORARY 24" STOP BAR, PAINT
STA. 187+89 RT
STA. 188+15 - STA. 188+33 RT
STA. 192+41 - STA. 192+74 LT

CURVE #3
DELTA = 8°17'59" AS SHOWN - 13
D = 2°17'31"
R = 2500.00'
T = 181.39'
L = 362.14'
BANKING 0.030 FT/FT
125' RUNOFF (40 MPH)
SEE SHEET 24 FOR BANKING DETAIL



WESTBOUND VT ROUTE 105
CORE #1
179+00 180+00 181+00 182+00 183+00 184+00 185+00 186+00 187+00 188+00 189+00 190+00 191+00 192+00 193+00

EXISTING PAVEMENT WIDTH 25'
ELIMINATED

NEWPORT PANELS INDUSTRIAL PK. DR. 210

TH #13
MM 3.545
STA. 187+20

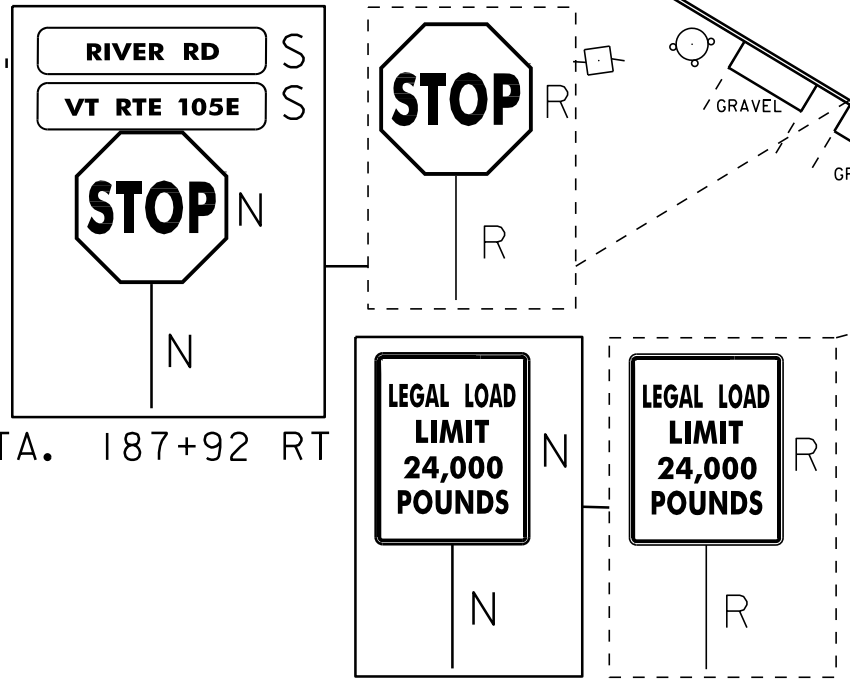
CEMETARY ROAD
TH #40
MM 3.650
STA. 192+73
STONE FILL TYPE IDITCH

~~604.412, 604.415, 604.418 REHAB, DROP INLETS, CATCH BASINS, OR MANHOLES, CLASS I, CLASS II OR CLASS III~~ ELIMINATED DI
STA. 184+31 LT
621.50 MANUFACTURED TERMINAL SECTION, FLARED
STA. 191+01.50 - STA. 191+39.00 RT
621.80 REMOVAL AND DISPOSAL OF GUARDRAIL
STA. 183+67.00 - STA. 186+98.00 RT
STA. 191+26.00 - STA. 193+01.00 RT

646.692 TEMPORARY LETTER OR SYMBOL, PAINT
STA. 187+97 RT "STOP" STA. 192+63 LT "STOP"
STA. 188+25 RT "STOP"

676.10 DELINEATOR WITH STEEL POST
STA. 182+35.50 RT 72 STA. 191+01.50 RT
STA. 186+98.00 RT STA. 193+13.00 RT 00

646.612 TEMPORARY 4" YELLOW LINE, PAINT
STA. 178+75 - STA. 194+25 (SOLID LT & RT, CENTERLINE, WITH BREAKS AT TOWN ROADS)
STA. 192+73 (CENTERLINE, TH #40)



CURVE #4
DELTA = 10°56'15"
D = 3°49'11"
R = 1500.00'
T = 143.61'
L = 286.34'
BANKING 0.045 FT/FT
125' RUNOFF (50 MPH)
SEE SHEET 24 FOR BANKING DETAIL

STA. 193+00.50 RT ANCHOR FOR STEEL BEAM RAIL
25' LONG, 16' RADIUS GUARDRAIL SECTION
STA. 193+13.00 RT ANCHOR FOR STEEL BEAM RAIL

LEGAL LOAD LIMIT 24,000 POUNDS

STA 182+72 TO 183+09.5 RT

646.20 4 INCH WHITE LINE
646.402 DURABLE 4" WHITE LINE, THERMOPLASTIC
STA. 178+75 - STA. 194+25 (SOLID LT & RT WITH EDGELINE BREAKS AT TOWN ROADS)
STA. 187+20 (EDGELINES, TH# 13)
STA. 192+73 (EDGELINES, TH #40)

646.602 TEMPORARY 4" WHITE LINE, PAINT
STA. 178+75 - STA. 194+25 (SOLID LT & RT WITH EDGELINE BREAKS AT TOWN ROADS)
STA. 187+20 (EDGELINES, TH# 13)
STA. 192+73 (EDGELINES, TH #40)

PAVEMENT CORES =
STA. 180+58 LT.
CORE # 1
TOTAL DEPTH PCC 9' NO

LEGEND
MAILBOX
UTILITY POLE
HYDRANT
MANHOLE
WATER VALVE
CATCH BASIN / DROP INLET
RAILROAD CROSSING SIGNAL

SIGN LEGEND
R = REMOVE
R&S = REMOVE AND SALVAGE
RET = RETAIN
S = SALVAGE
N = NEW
B-B = BACK TO BACK

NOT TO SCALE

PROJECT LAYOUT SHEET 1

PROJECT NAME: TROY-NEWPORT
PROJECT NUMBER: STP 2613(I)
FILE NAME: 06B056.dgn
PROJECT LEADER: CDL
DESIGNED BY: SJL
PLOT FILE: 06b056*14.i

PLOT DATE: 25-OCT-2011 12:17
DRAWN BY: SJD
CHECKED BY: EPL
SHEET 14 OF 31