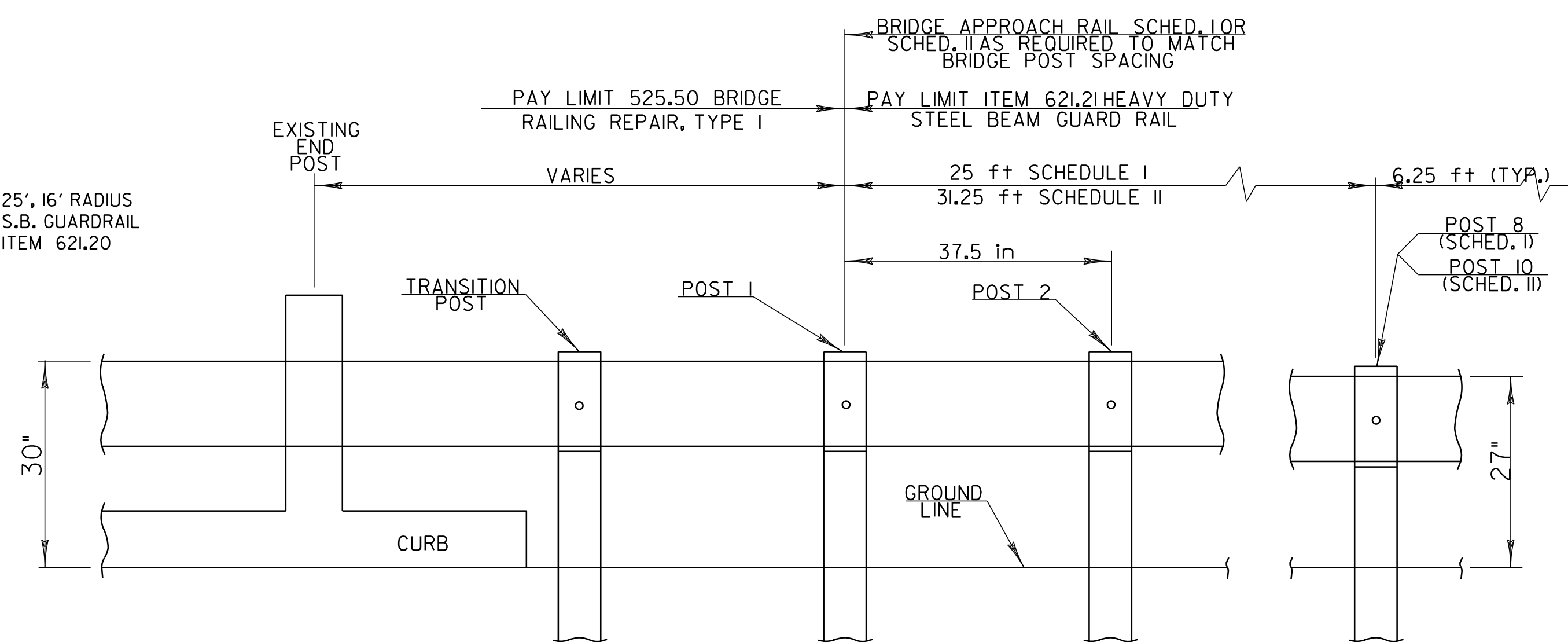


NEWPORT BRIDGE #57
FIELD STA. 9+09 - MM 0.172



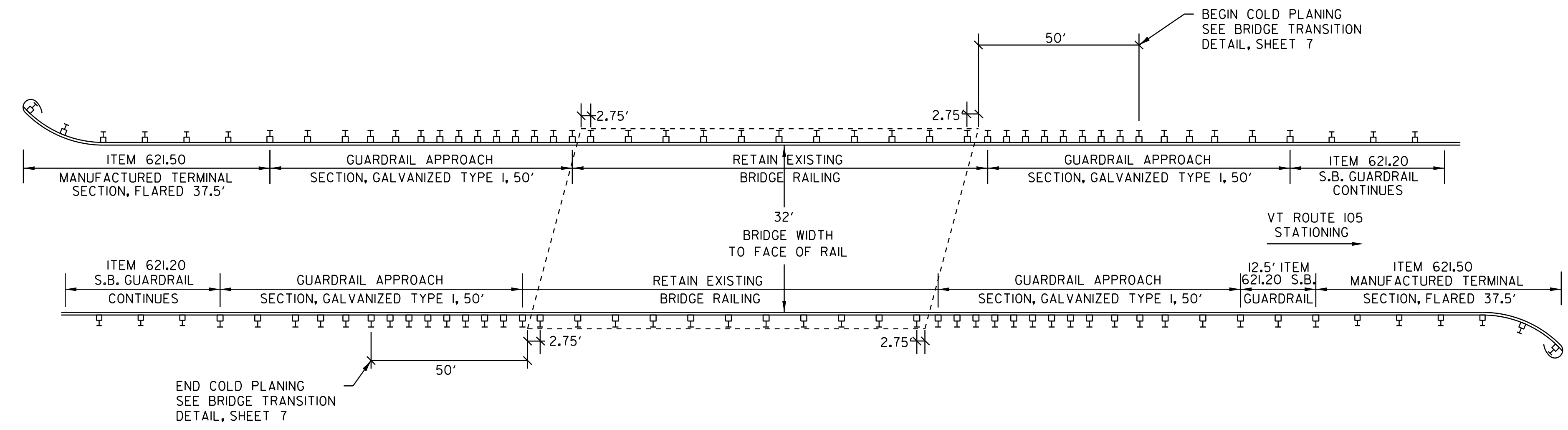
BRIDGE APPROACH RAILING

NOTES:

- BRIDGE RAIL SHALL BE ITEM 621.21 HEAVY DUTY STEEL BEAM RAIL.
- BRIDGE APPROACH RAIL HEIGHT SHALL BE TRANSITIONED TO NORMAL ROADWAY RAIL HEIGHT IN 25 FEET.
- APPROACH RAILING SHALL BE ITEM 621.21 HEAVY DUTY STEEL BEAM FOR LENGTHS OF 25 FEET OR 31.25 FEET DETERMINED BY THE SCHEDULE. SEE BRIDGE DETAILS.
- FOR BRIDGE RAILING, THE TRANSITION POST SHALL HAVE AN OFFSET BLOCK AND BE LOCATED AS CLOSE AS PRACTICAL TO THE MID-POINT BETWEEN THE BRIDGE END POST AND APPROACH RAIL POST I.
- SPLICES SHALL LAP IN DIRECTION OF TRAFFIC FLOW.

BRIDGE APPROACH RAILING

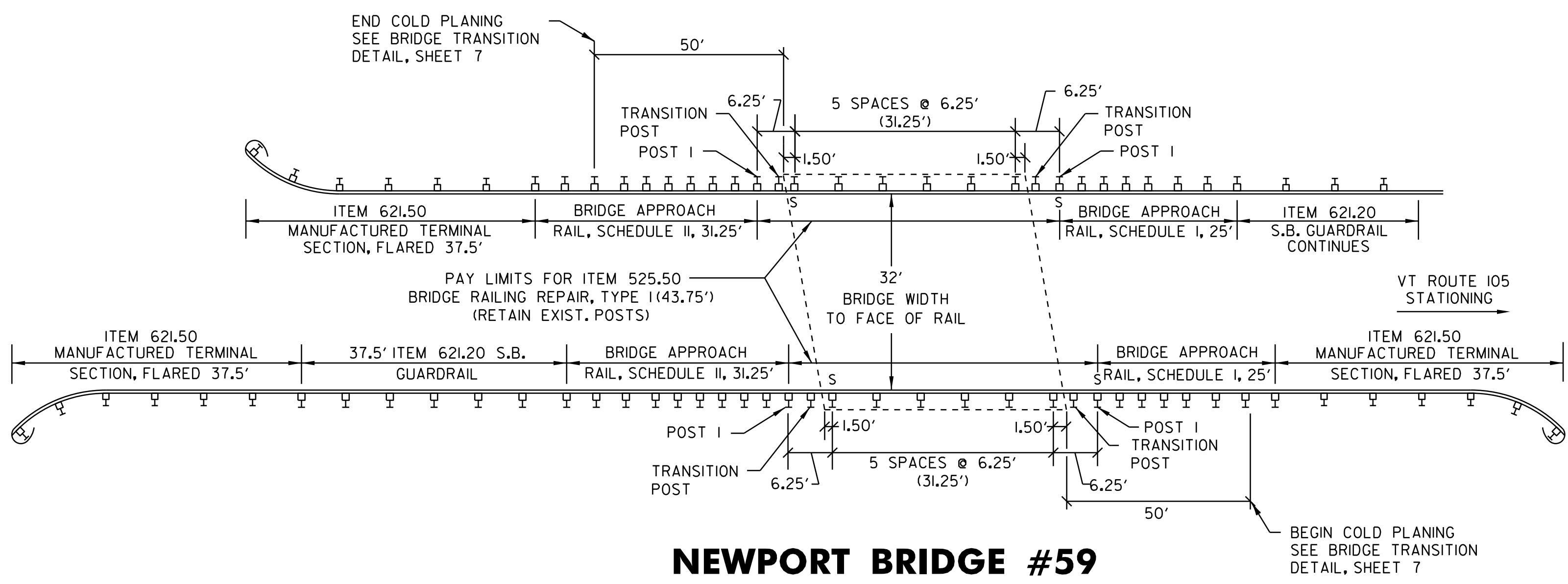
WHEN A RAIL PANEL SPLICE OCCURS AT POST NO. 1 USE SCHEDULE I FOR APPROACH RAILING WHEN A RAIL PANEL SPLICE OCCURS AT BRIDGE END POST USE SCHEDULE II FOR APPROACH RAILING.



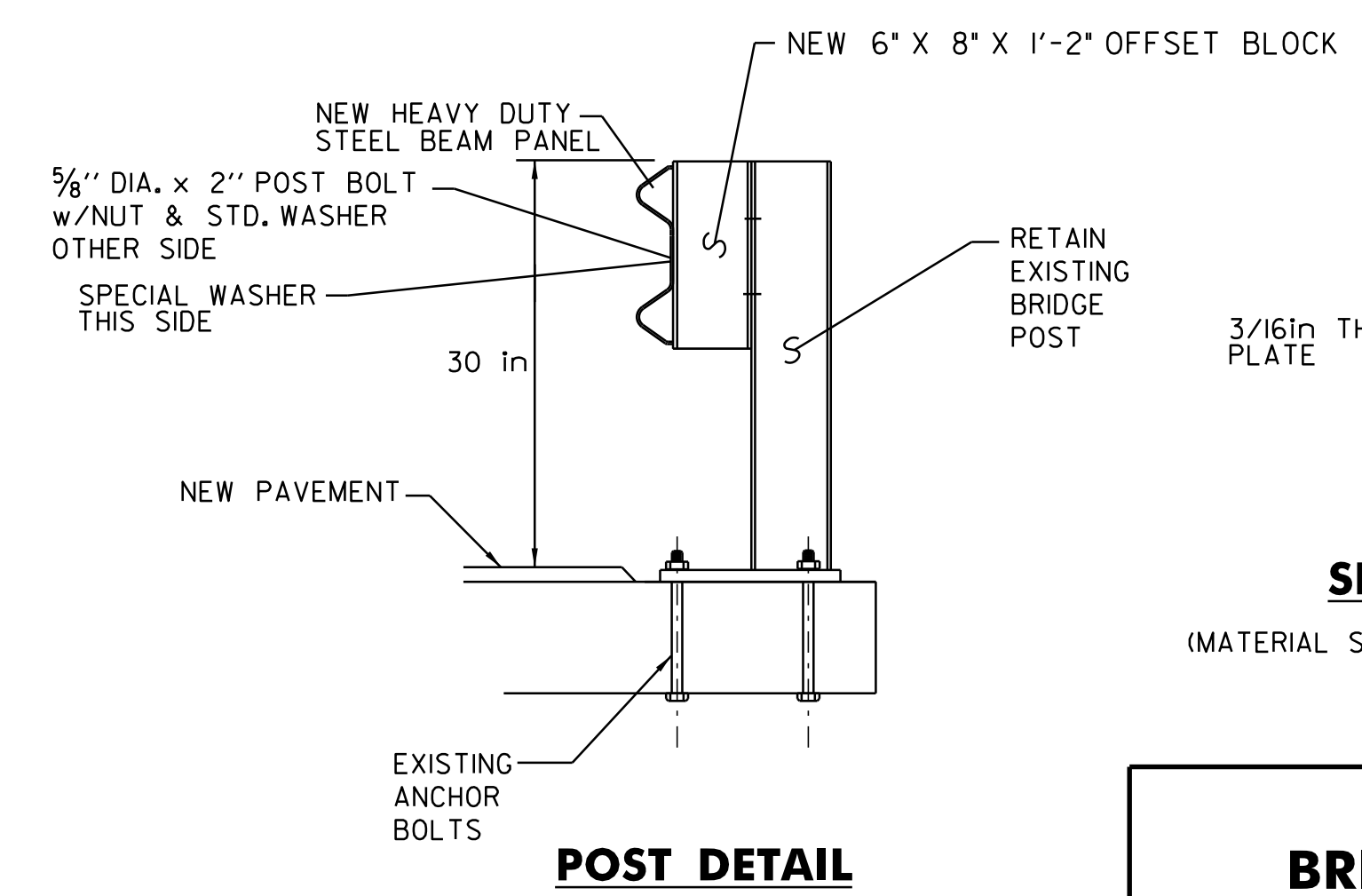
NEWPORT BRIDGE #58
FIELD STA. 53+94 - MM 1.022

SCHEDULE I		
POST NO.	SPACING	PAYMENT FACTOR
1	3'-1 1/2"	1.4 x 12.5 ft
2	3'-1 1/2"	
3	3'-1 1/2"	
4	3'-1 1/2"	
5	4'-2"	1.2 x 12.5 ft
6	4'-2"	
7	4'-2"	
8	4'-2"	1.0 (TYP.)
9	6'-3" (TYP.)	

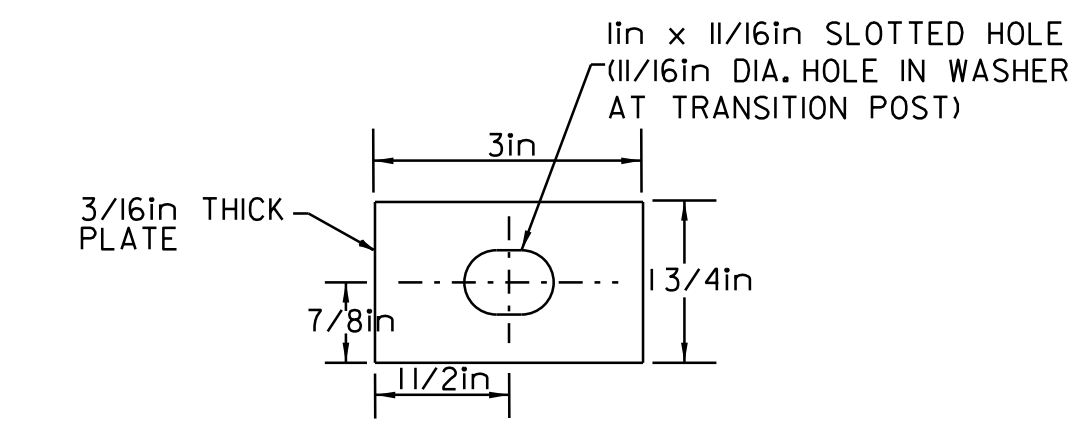
SCHEDULE II		
POST NO.	SPACING	PAYMENT FACTOR
1	3'-1 1/2"	1.4 x 18.75 ft
2	3'-1 1/2"	
3	3'-1 1/2"	
4	3'-1 1/2"	
5	3'-1 1/2"	1.2 x 12.5 ft
6	3'-1 1/2"	
7	3'-1 1/2"	
8	4'-2"	1.2 x 12.5 ft
9	4'-2"	
10	4'-2"	1.0 (TYP.)
11	6'-3" (TYP.)	



NEWPORT BRIDGE #59
FIELD STA. 64+16 - MM 1.215



POST DETAIL



SPECIAL WASHER DETAIL

(MATERIAL SHALL MEET AASHTO M270/M270 GRADE 345W)

DETAILS ARE NOT TO SCALE

BRIDGE DETAIL SHEET	PROJECT NAME: TROY-NEWPORT	PLOT DATE: 25-OCT-2011 12:17	
	PROJECT NUMBER: STP 2613(1)	DRAWN BY: RHB	
	FILE NAME: 06B056.dgn	DESIGNED BY: RHB	CHECKED BY: EPD
	PLOT FILE: 06b056*06.i	SHEET 6 OF 31	